

Pines Dining Hall + Servery Addition

800 Centre Street, Burns Lake, B.C.

Northern Health Authority

Addendum No. 2

Issued 10 May, 2018

Total (Excluding Cover Page):

7 - Pages

7 - Drawings

4 - Sketches

DGBK Project No. 17-110

DGBK Architects

*950 – 1500 West Georgia St
Vancouver, BC V6G 2Z6
Tel. (604) 682-1664
Fax. (604) 682-2405
E-mail: info@dgbk.com*

PROJECT:

**Northern Health Authority
Pines Dining Hall + Servery Addition
Burns Lake, BC**

Project No. 17-110

CONSULTANT: DGBK Architects

This Addendum is to be read in conjunction with and considered as an integral part of the Contract Documents. Revisions supersede the information contained in previously issued Drawings, Specifications and Addenda.
Request for Proposal submitted is to include all items of this Addendum.
Consideration will not be allowed for any extras due to any Bidder not being familiar with the contents of this Addendum.

DRAWINGS: **Full Size Drawings: A-200; A-401**
 Sketches: ASK-002; ASK-003; ASK-004

ATTACHMENTS: **Mechanical Addendum Number M-2 (2 pages).**

 Electrical Addendum No. 01 (1 page & Drawings: E100, E101, E102 & E200)

 Kitchen Equipment Addendum FS-01 (3 pages).

BIDDER'S INSTRUCTIONS:

Item 1 Note: The Kitchen Equipment is to be supplied and installed by the G.C.
 Refer also to Mechanical Addendum 02.

DRAWINGS:

Item 2 Drawing A-200
 Note following additions:

1. Roof Assembly R3: replace "Roofing Membrane" with "Roofing Underlayment".t
2. Fire Rating Notes: Delete all notes and replace with "1. The fire separation between fire compartments to u/s of roof".
3. General Notes: Notes 1 and 9 have been revised.

Item 3 Drawing A-302
 New Drawing Sheet:

1. Wood Ceiling Panel C-1 – layouts and details.

Item 4 Drawing A-401
Note the following clarification:

2. Extent and layout of Polycarbonate infill Panels in Loading Bay area.

Item 5 Drawing A-603
Note the following additions and clarification:

1. New details A-303; A-318
2. Revisions as noted.

SKETCHES:

Item 6 Drawing ASK-002
Note the following revision:

Code Analysis Section 2.4 delete last line "There will be no additional fire...".

Item 7 Drawing ASK-003
Note the following addition to Building Elevation South (1/A-401).

Building Detail Tags have been updated to read - d312/A-603 & d320/A-603

Item 8 Drawing ASK-004
Note the following addition to Building Section A (1/A-501).

1. Building Detail Tag have been updated to read: d303/A-603
2. Building Grid Line Tags have been revised to reflect plan tags.

End of Addendum No. 2

WALL, ROOF & FLOOR TYPES

EXTERIOR WALL TYPES:

4

E1

272

E3

293

4

E2

295

E4

335

4

E5

VARIABLES

4

E6

VARIABLES

4

E1

272

E3

293

4

E2

295

E4

335

4

E5

VARIABLES

4

E6

VARIABLES

INTERIOR WALL TYPES:

WE

EXISTING WALL

W1

80

W2

121

W3

134

4

W4

172

W5

185

W6

198

W7

177

4

W4

172

W5

185

W6

198

W7

177

4

W4

172

W5

185

W6

198

W7

177

4

W4

172

W5

185

W6

198

W7

177

4

W4

172

W5

185

W6

198

W7

177

4

W4

172

W5

185

W6

198

W7

177

4

W4

172

W5

185

W6

198

W7

177

4

W4

172

W5

185

W6

198

W7

177

4

W4

172

W5

185

W6

198

W7

177

4

W4

172

W5

185

W6

198

W7

177

4

W4

172

W5

185

W6

198

W7

177

4

W4

172

W5

185

W6

198

W7

177

4

W4

172

W5

185

W6

198

W7

177

4

W4

172

W5

185

W6

198

W7

177

4

W4

172

W5

185

W6

198

W7

177

4

W4

172

W5

185

W6

198

W7

177

4

W4

172

W5

185

W6

198

W7

177

4

W4

172

W5

185

W6

198

W7

177

4

W4

172

W5

185

W6

198

W7

177

4

W4

172

W5

185

W6

198

W7

177

4

W4

172

W5

185

W6

198

W7

177

4

W4

172

W5

185

W6

198

W7

177

4

W4

172

W5

185

W6

198

W7

177

4

W4

172

W5

185

W6

198

W7

177

4

W4

172

W5

185

W6

project

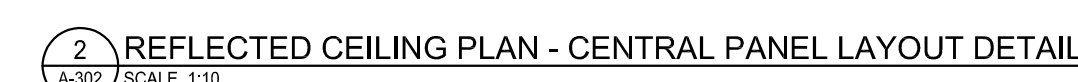
**THE PINES
DINING HALL &
SERVERY ADDITION**

BURNS LAKE, BC

dgbk architects | design • planning • interiors
suite 950 • 1500 west georgia street • vancouver • bc • v6g 2z6
T: 604.682.1664 • F: 604.682.2405 • W: www.dgbk.com

scale	AS NOTED
date	2017.11.21
drawn	
checked	
project no.	17-110
drawing no.	

latest revision no. 





- 1 PREFINISHED METAL ROOFING
STYLE TO MATCH EXISTING
- 2 ALUMINIUM WINDOWS,
CLEAR ANODIZED FINISH
- 3 PREFINISHED CEMENTITIOUS
EXTERIOR PANELS.
- 3a PREFINISHED CEMENTITIOUS
EXTERIOR PLANKS.
- 4 CLEAR CEDAR WOOD SIDING
STAINED FINISH
- 5 WOOD BEAMS & COLUMNS
STAINED FINISH
- 6 WOOD FASCIA AND TRIM
PAINTED FINISH
- 7 EXTERIOR STUCCO
PAINTED FINISH TO MATCH EXISTING
- 8 2 PLY SBS ROOF MEMBRANE
- 9 MECHANICAL R.T.U.
- 10 SCUPPER
- 11 TRANSLUCENT POLYCARBONATE
PANELS IN ALUMINIUM FRAMES

title
**BUILDING
ELEVATIONS
EAST, NORTH, WEST**

A-401

CODE ANALYSIS

1.0 BUILDING DESCRIPTION AND CODE APPLICATION REQUIREMENTS

The following is a preliminary outline of requirements of the 2012 British Columbia Building Code (BCBC) for the above captioned project.

2.1 Project Data

Building Height:	1 storey
Building Area Existing:	1,550 m ²
Building Area New:	440 m ²
Covered Building Area New:	52 m ² (Loading Bay)
Building area Proposed -Total:	2,042 m ²

Construction: Combination of Non-combustible and Combustible

2.2 Occupancy Requirements

Table 3.1.2.1 classifies this building as a *Group B Division 3 care occupancy*.

2.3 Size and Construction Requirements

The overall new building must conform to the requirements of Article 3.2.2.45 as follows:

Building Height:	2 storeys maximum
Fire protection:	Sprinklers required
Building Area:	Not more than 2,400 m ² if 1 storey in building height.
Construction:	Non-combustible or Combustible
Floors:	Fire separations having a 3/4 hour fire separations
Sleeping Compartments:	1,000m ² maximum with ¾ hour fire separation.
Roof:	Not rated
Supporting structure:	Fire resistance rating not less than that required for the supported assembly.

2.4 Addition



The Project consists of a 482m² addition to an existing 1550 m² B3 Occupancy building, which was built in 1991 under the 1985 BCBC. The B3 classification is the new occupancy classification that this Care Occupancy falls under since the adoption of the 2012 BCBC. The Addition will be built to this new standard. The Pines Food Service Addition will increase the overall building area of the existing Pines Facility; however, it will still fall within the area limits for the 3.2.2.24 Category building.



dgbk architects | design • planning • interiors

suite 950 • 1500 west georgia street • vancouver • bc • v6g 2z6
T: 604.682.1664 • F: 604.682.2405 • W: www.dgbk.com

Project

PINES DINING HALL ADD
BURNS LAKE, BC

Title

TITLE SHEET - CODE ANALYSIS
A-100

Drawn

Checked

Scale

AS NOTED

Drawing No.

Revision

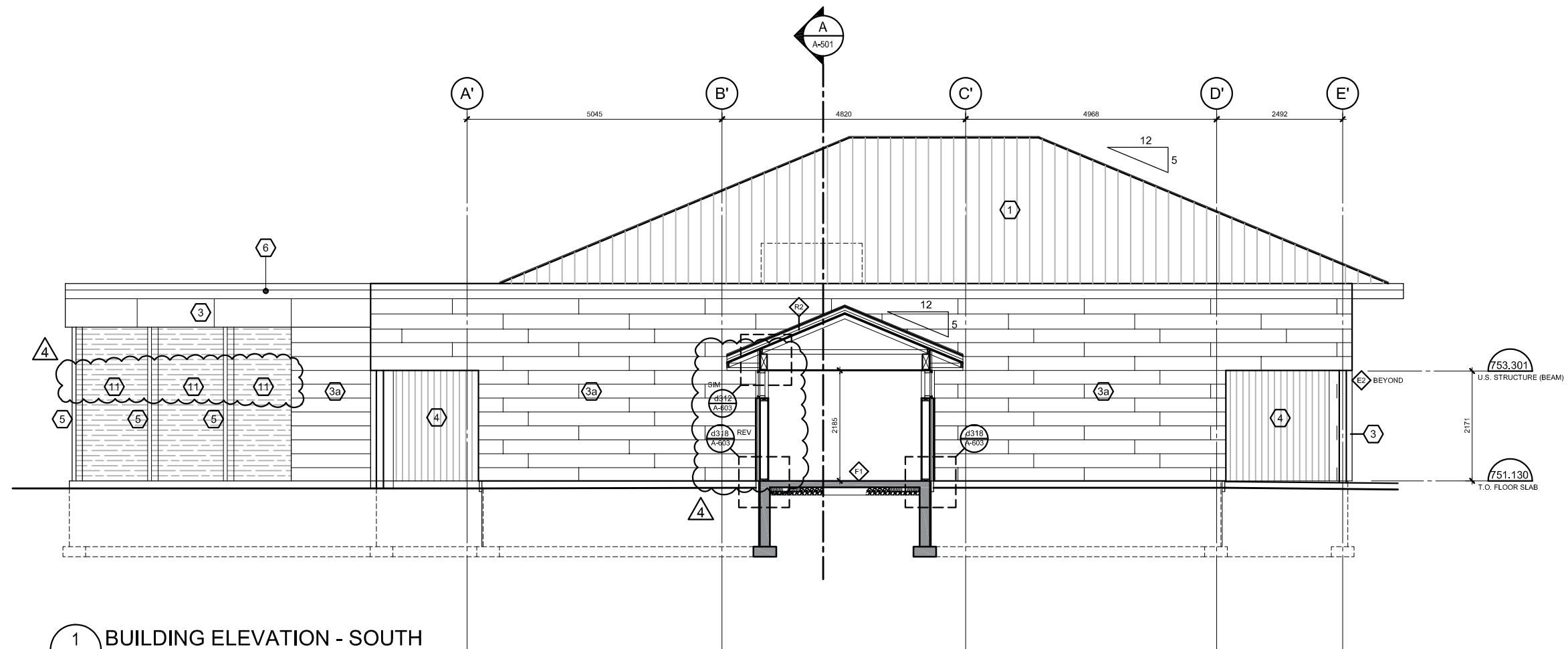
Project No. 17-110

Date

2018-05-03

ASK-002





1 BUILDING ELEVATION - SOUTH
A401 SCALE 1:100

The following addendum supersedes information contained in drawings and specifications issued for the project to the extent referenced. This Addendum forms part of the Tender Documents and is subject to all of the conditions set out in the contract conditions.

1. DRAWINGS – MECHANICAL.

1.1 Drawing M101 Foundation Plan

- .1 Delete storm connections at grids B'/1' and C'/1' (375 l each). Roof drains deleted from Connector Corridor Roof.

1.2 Drawing M102 Plumbing Plan

- .1 Delete storm lines at grids B'/1' and C'/1' (375 l each). Roof drains deleted from Connector Corridor Roof.
- .2 Servery Equipment Connection Schedule – Revise Comments to : All equipment to be supplied by General Contractor, installed and connected by mechanical.
- .3 The 2 – SK-1's in Dining Hall to be replaced with LAV-1.

1.3 Drawing M103 Roof Plan

- .1 Delete RD-1 at grids B'/1' and C'/1' (375 l each). Roof drains deleted from Connector Corridor Roof.

1.4 Drawing M401 HVAC Plan

- .1 REVISE Note #7: " Relocate Air Cooled Condenser to new location in covered Loading Bay. Piping from relocated unit to rise up exterior wall and run in ceiling space of new addition. Piping to drop down shaft at B'/1' into crawl space below. Refer to Part Plans 1 and 3/M502 for continuation. There are 3 refrigerant pipes which need to run from the air cooled condenser to the DX coils in the mechanical room. Existing sizes are 35mm RS, 18mm LS and 29mm HG. Due to increase in refrigerant piping length assume new piping will be one size larger for each service. Unit to be seismically restrained to concrete slab.

1.5 Drawing M501 Partial Plans

- .1 Detail 1 Existing Plan
 - .1 Along with the gas, sprinkler and DCW lines being routed through the crawl space ADD the 3 refrigerant lines as noted in 1.4.1 above. For continuation refer to Details 1 and 3 on M502.

1.6 Drawing M502 Partial Plans

- .1 Details 1 and 3: Refrigerant lines as noted in Note #7 on M401 to run within basement crawl space to mechanical room. Remove all existing piping from AHU to original condenser location and add new from coils to relocated unit location in Loading area.
- .2 ADD Detail 4: Water Entry Schematic as per attached sketch ADD2-MSK-1.

END OF MECHANICAL ADDENDUM NO 2

THE FOLLOWING ADDENDUM SUPERCEDES INFORMATION CONTAINED IN DRAWINGS AND SPECIFICATIONS ISSUED FOR THE PROJECT TO THE EXTENT REFERENCED. THIS ADDENDUM FORMS PART OF THE TENDER DOCUMENTS AND IS SUBJECT TO ALL OF THE CONDITIONS SET OUT IN THE CONTRACT CONDITIONS.

E100 – DEMOLITION AND NEW AREA SERVICING PLAN

- .1 A note has been added regarding the relocation and reverification of seven existing sprinkler flow switches. Switches need to be raised accordingly to the raising of the existing sprinkler double check valve assembly.

E101 – SINGLE LINE DIAGRAM & ELECTRICAL ROOM LAYOUT

- .1 Two additional baseboard heaters have been added.
- .2 All baseboard heaters have been split into two 750W units instead of 1500W single units.
- .3 2 additional electrical forced flow heaters have been added.

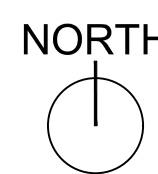
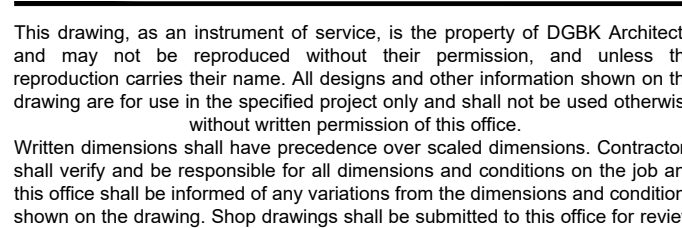
E102 – ELECTRICAL SCHEDULES

- .1 Two baseboard heaters per circuit instead of having individual circuiting.
- .2 Two additional baseboard heaters have been circuited.
- .3 Two additional electrical forced flow heaters have been circuited on individual circuits.

E200 – AREA OF ADDITION POWER PLAN

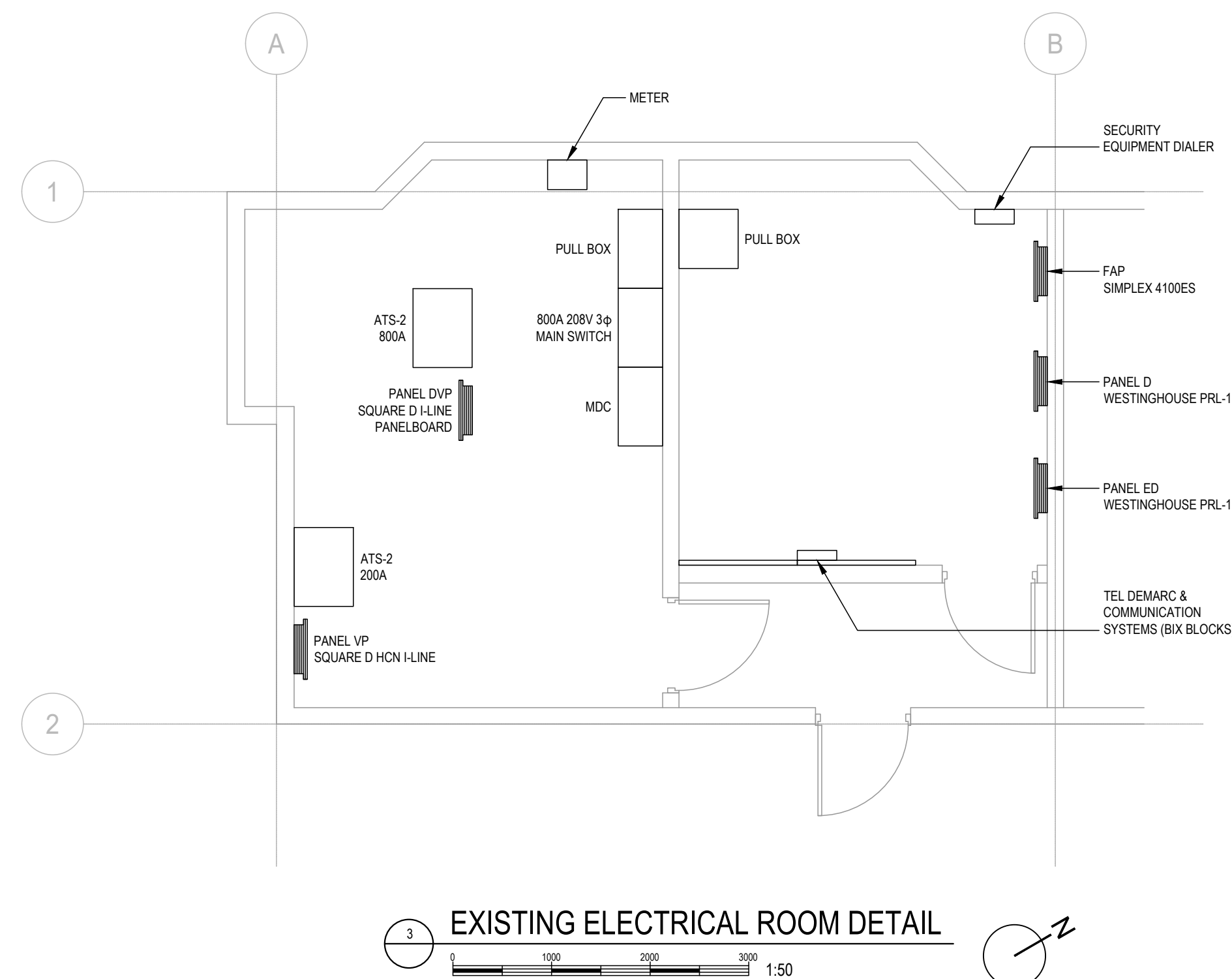
- .1 Two additional baseboard heaters have been identified on drawing.
- .2 Previous 1500W baseboard heaters have now been split into two 750W units as identified on drawing.
- .3 Two additional electrical forced flow heaters have been identified on drawing.

**REFER TO DRAWINGS E100, E101, E102 AND E200.
END OF ELECTRICAL ADDENDUM NO. 01**



1 MAIN FLOOR PLAN

0 2500 4000 6000 1:100

[illegible]

- | | | | | | | | | |
|---|--|--|---|--|--|---|--|--|
| MECH MOTOR SCHEDULE ABBREVIATIONS:
(a) Supplied By:
E = Electrical
M = MECH | | | (b) Starter Type:
PCS = Packaged Control System
INT = Integral to Unit
MNR = Motor
VFD = Variable Frequency Drive Complete with Bypass and HOA
MG = Magnetic Starter Complete with HOA switch and aux status contact | | | (c) Control Device:
T = Thermostat
DDC = Direct Digital Control System
C = Continuous Operation
SW = Speed Switch
FAP = Fire alarm panel
RT = Reverse Acting Thermostat
TC= Time Clock
A=Request
O=Other | | |
|---|--|--|---|--|--|---|--|--|

latest revision no.

SERVICES NOTED DENOTE LOADS FOR EQUIPMENT SPECIFIED, APPLICABLE TRADES TO REFER TO FEC SUPPLIED SHOP DRAWINGS AND BROCHURES FOR ACCURATE SERVICE INFORMATION AND CONNECTION POINTS.

NTS

- ### KEYED NOTES:
- 1) RUN CAT6 AND RG6 COAX IN CONDUIT TO CEILING ABOVE ELEC. CLST.
COIL IN CEILING WITH 3" SLACK
TERMINATE CAT6 CABLES ON BOTH ENDS WITH RJ45 JACKS AND OUTLETS WITH COVER PLATES
TERMINATE COAX CABLES ON BOTH ENDS WITH F TYPE CONNECTORS AND OUTLETS WITH COVER PLATES
 - 2) RUN CAT6 IN CONDUIT TO CEILING ABOVE ELEC. CLST.
COIL IN CEILING WITH 3" SLACK
TERMINATE CABLES ON BOTH ENDS WITH RJ45 JACKS AND OUTLETS WITH COVER PLATES
 - 3) WIRES TERMINATED IN JUNCTION BOX AND CAPPED FOR FUTURE USE.



PROJECT: **PINES EXTENDED CARE FACILITY**

May 7, 2018

ADDENDUM - ITEMIZED EQUIPMENT

This Addendum is to be interpreted with the Bid documents and is in addition to said documents. Therefore such becomes part of the Contract Documents.

This Addendum and all information, clarification, change, etc. noted supersede all previous documents

The submitted Bid Forms are to include any cost as required by this Addendum as noted under the individual item.

NOTE: It is the responsibility of the FEC to provide all technical information with their submittal of equivalents/alternates. Equivalents/alternates must meet requirements of the specifications. Any costs incurred in accepting the equivalent/alternate are to be borne by the FEC.

Item 1 – Shelving:

<u>ITEM 1</u>	<u>SHELVING</u>	<u>3 REQUIRED</u>	
Manufacturer:	Metro		
Model:	Super Erecta Shelf *L046		
Approved	Nexel equivalent		
Alternate:	Olympic equivalent		
Sizes:	3-1 required 1525 x 457mm		FS-01
	2 required 1220 x 457mm		
Accessories:	Standard with Epoxy coated finish 4 posts, 74P, per unit or common posts permitted where units are end to end, with floor plates 5 shelves per unit		
Note:	Verify sizes with room conditions, prior to ordering		

Item 3 – Hand Sink: Quantity as specified - 1

Item 17 – Hand Sink: Quantity as specified - 1

Item 23 – Microwave Oven: – Model number changed

<u>ITEM 23</u>	<u>MICROWAVE OVEN</u>	<u>1 REQUIRED</u>	
Manufacturer:	Panasonic		
Model:	NE-2152 NE-2180 *L046		FS-01
Approved	ACP equivalent		
Alternate:			
Accessories:	Standard Cord and plug		
Services:	Refer to Services Schedule		

END

Panasonic

Commercial Microwave Ovens

Pro Series

NE-1252, NE-1752, NE-2152



The Choice of Canada's
Hospitality Service
Professionals

- Choice of 1200, 1700 or 2100 Watts of Cooking Power
- Compact Size with Heavy-Duty Performance
- Stainless Steel Construction
- Top and Bottom Energy Feed
- 'Grab and Go' Door Handle
- Programmable Memory Pads
- Enhanced Diagnostics






Ideal for full and quick service restaurants,
supermarkets, delis, and convenience stores.

Panasonic

Commercial Microwave Ovens Pro Series

NE-1252, NE-1752, NE-2152

Features		NE-1252	NE-1752	NE-2152
Cooking Power*		1200W	1700W	2100W
Power Levels		15	15	15
Defrost		Yes	Yes	Yes
Stage Cooking		5	5	5
Programmable Memory		30	30	30
Grab n' Go Handle		Yes	Yes	Yes
Self Diagnostics		Yes	Yes	Yes
Energy Feed		Top & Bottom	Top & Bottom	Top & Bottom
Display		Digital	Digital	Digital
Interior Light		LED Light	LED Light	LED Light
Cook Cycle Count		Yes	Yes	Yes
Controls		Electronic	Electronic	Electronic
Wrap		Stainless	Stainless	Stainless
Cavity		Stainless	Stainless	Stainless
Cabinet Dimensions	- Width	16 5/8 (42.2)	16 5/8 (42.2)	16 5/8 (42.2)
in. (cm)	- Depth	20 (50.8)	20 (50.8)	20 (50.8)
	- Height	13 13/16 (35.1)	13 13/16 (35.1)	13 13/16 (35.1)
Oven Dimensions	- Width	13 (33.0)	13 (33.0)	13 (33.0)
in. (cm)	- Depth	12 (30.5)	12 (30.5)	12 (30.5)
	- Height	6 7/8 (17.5)	6 7/8 (17.5)	6 7/8 (17.5)
Oven Capacity	- Cu. Ft.	0.6	0.6	0.6
Power Requirements	- Volts	120	208/230-240	208/230-240
	- Amps	20	15	20
	- Phase	1	1	1
	- Hert	60	60	60
Shipping Weights	lbs (Kg)	65 (29.5)	70 (31.5)	74 (33.5)
Net Weight	lbs (Kg)	57 (25.5)	61(27.5)	65 (29.5)
Plug Configuration		 NEMA 5-20P	 NEMA 6-15P	 NEMA 6-20P
Country of Origin		Japan	Japan	Japan
Warranty		3 Year Warranty	3 Year Warranty	3 Year Warranty

*IEC-705 Method

Specifications subject to change without notice

Panasonic Canada Inc., 5770 Ambler Drive, Mississauga, Ontario, L4W 2T3, 905-238-2267