

LIGHTING PLAN SYMBOLS	
	SURFACE OR SUSPENDED MOUNTED LUMINAIRE, 305x1220mm (1'x4')
	SURFACE OR SUSPENDED MOUNTED, 610x1220mm (2'x4')
	SURFACE OR SUSPENDED MOUNTED LUMINAIRE, 610x610mm (2'x2')
	RECESSED LUMINAIRE, 305x1220mm (1'x4')
	RECESSED LUMINAIRE, 610x1220mm (2'x4')
	RECESSED LUMINAIRE, 610x610mm (2'x2')
	STRIP LUMINAIRE (LENGTH AS PER LUMINAIRE SCHEDULE)
	WALL MOUNTED LINEAR LUMINAIRE, 1220mm (4')
	RECESSED LUMINAIRE / DOWN LIGHT
	SURFACE MOUNTED OR SUSPENDED LUMINAIRE
	WALL MOUNTED LUMINAIRE
	BOLLARD OR IN-GROUND LUMINAIRE
	POLE MOUNTED LUMINAIRE (SINGLE HEAD)
	RECESSED STEP LIGHT LUMINAIRE
	LUMINAIRE ON EMERGENCY CIRCUIT (INDICATED BY SHADING)
	LUMINAIRE ON 24/7 CIRCUIT (INDICATED BY CROSSHATCHING)
	DOTS DENOTES SUSPENDED LUMINAIRE
	CEILING MOUNTED EXIT SIGN (TEXT ON SHADED SIDES, ARROWS AS INDICATED)
	WALL MOUNTED EXIT SIGN (TEXT ON SHADED SIDES, ARROWS AS INDICATED)
	TRACK LIGHT (# OF HEADS AS SHOWN, LENGTH AS INDICATED)
	LINE VOLTAGE SWITCH
	2-GANG LINE VOLTAGE SWITCH
	3-GANG LINE VOLTAGE SWITCH
	4-GANG LINE VOLTAGE SWITCH
	LOW VOLTAGE SWITCH (30V OR LESS)
	LOW VOLTAGE DIMMER SWITCH
	LINE VOLTAGE DIMMER SWITCH
	LOW VOLTAGE SWITCH C/W OCCUPANCY SENSOR
	LINE VOLTAGE SWITCH C/W OCCUPANCY SENSOR
	LOW VOLTAGE SWITCH WITH PASSIVE INFRARED VACANCY SENSOR
	LOW VOLTAGE SWITCH WITH DUAL TECHNOLOGY VACANCY SENSOR
	LINE VOLTAGE SWITCH WITH PASSIVE INFRARED VACANCY SENSOR
	LINE VOLTAGE SWITCH WITH DUAL TECHNOLOGY VACANCY SENSOR
	LINE VOLTAGE SWITCH C/W PILOT LIGHT
	LINE VOLTAGE TWO POLE SWITCH
	LINE VOLTAGE THREE WAY SWITCH
	LINE VOLTAGE FOUR WAY SWITCH
	ELECTRONIC PROGRAMMABLE TIMER SWITCH
	KEY OPERATED SWITCH
	WALL MOUNTED INFRARED LIGHTING OCCUPANCY SENSOR (DT=DUAL TECHNOLOGY)
	CEILING MOUNTED INFRARED LIGHTING OCCUPANCY SENSOR (DT=DUAL TECHNOLOGY)
	PHOTOCELL (EXTERIOR, TYPE AS INDICATED)
	DAYLIGHT SENSOR (INTERIOR PHOTOCELL, TYPE AS INDICATED)
	EMERG. LTG. BATTERY PACK (# OF LAMPS AS SHOWN)
	EMERG. LTG. BATTERY PACK AND EXIT COMBO
	CEILING MOUNTED EMERG. LTG. REMOTE HEAD (# OF LAMPS AS SHOWN)
	WALL MOUNTED EMERG. LTG. REMOTE HEAD (# OF LAMPS AS SHOWN)
	WIRELESS CONTROL

LIGHTING ANNOTATION LEGEND	
	LUMINAIRE TYPE (SCHEDULE REFERENCE)
	SWITCH LEG
	PANEL AND CIRCUIT

POWER PLAN SYMBOLS	
	DUPLEX 5-15R RECEPTACLE
	DUPLEX 5-15R SWITCHED RECEPTACLE
	DUPLEX 5-15R RECEPTACLE C/W INTEGRAL GFCI PROTECTION
	DUPLEX 5-20R RECEPTACLE, T-SLOT
	DUPLEX 5-20R SWITCHED RECEPTACLE
	SINGLE 5-20R RECEPTACLE
	SPLIT CIRCUIT DUPLEX 5-15R RECEPTACLE
	QUADPLEX 5-15R RECEPTACLE
	QUADPLEX 5-15R SWITCHED RECEPTACLE
	QUADPLEX 5-20R RECEPTACLE
	QUADPLEX 5-20R SWITCHED RECEPTACLE
	DUPLEX 5-15R RECEPTACLE WITH TWO USB CHARGING PORTS
	DUPLEX 5-15R RECEPTACLE WITH FOUR USB CHARGING PORTS
	SPECIAL RECEPTACLE (TYPE AS INDICATED)
	REEL CORD RECEPTACLE
	FLOOR MOUNTED DUPLEX RECEPTACLE
	CEILING MOUNTED DUPLEX RECEPTACLE
	DIRECT POWER CONNECTION TO EQUIPMENT TERMINAL BOX
	SERVICE COLUMN / PACK POLE (NUMBER OF OUTLETS AS INDICATED)
	WALL MOUNTED JUNCTION BOX
	FLOOR MOUNTED JUNCTION BOX
	CEILING MOUNTED JUNCTION BOX
	ELECTRICAL PANEL
	PANEL (TYPE AS INDICATED - SECURITY, LIGHTING RELAY, ETC.)
	GROUNDING / BONDING BUS BAR
	VARIABLE FREQUENCY DRIVE
	MOTOR
	MOTOR C/W DISCONNECT SWITCH
	DISCONNECT SWITCH
	FUSED DISCONNECT SWITCH
	COMBINATION MAGNETIC MOTOR STARTER AND DISCONNECT
	MAGNETIC MOTOR STARTER
	LIMIT SWITCH
	THERMOSTAT
	MANUAL MOTOR STARTER C/W PILOT LIGHT
	CONDUIT STUB
	CONDUIT UP
	CONDUIT DOWN
	DOT DENOTES DEVICE MOUNTED ABOVE MILLWORK COUNTERTOP
	FORCED AIR WALL HEATER
	BASE BOARD HEATER (BLACK SQUARE INDICATES INTEGRAL THERMOSTAT)
	GROUND ROD

COMMUNICATION SYMBOLS	
	WALL MOUNTED TELEPHONE OUTLET
	WALL MOUNTED DATA OUTLET (# DENOTES NUMBER OF OUTLETS)
	WALL MOUNTED VOICE & DATA OUTLET (# DENOTES NUMBER OF OUTLETS)
	FLOOR MOUNTED VOICE & DATA OUTLET (# DENOTES NUMBER OF OUTLETS)
	CEILING MOUNTED VOICE & DATA OUTLET (# DENOTES NUMBER OF OUTLETS)
	WIRELESS ACCESS POINT. PROVIDE DATA OUTLET
	WALL MOUNTED OUTLET (C = CATV, F = FIBRE, I = INTERCOM, H = HDMI, X = XLR)
	CEILING MOUNTED OUTLET
	FLOOR MOUNTED OUTLET
	SUITE TELEPHONE TERMINATION BOX
	SUITE CATV TERMINATION BOX
	MICROPHONE OUTLET

PUBLIC ADDRESS & AUDIO-VISUAL SYMBOLS	
	WALL MOUNTED SPEAKER
	CEILING MOUNTED SPEAKER
	HORN
	CHIME
	BUZZER
	VOLUME CONTROL

NURSE CALL SYMBOLS	
	WALL MOUNTED NURSE CALL DOME LIGHT
	CEILING MOUNTED NURSE CALL DOME LIGHT
	WALL MOUNTED NURSE CALL ZONE LIGHT
	CEILING MOUNTED NURSE CALL ZONE LIGHT
	NURSE CALL SINGLE PATIENT STATION
	NURSE CALL DOUBLE PATIENT STATION
	NURSE CALL STAFF STATION
	NURSE CALL STAFF EMERGENCY STATION
	NURSE CALL STAFF DUTY STATION/TONE STATION, WALL MOUNTED
	NURSE CALL TONE STATION, CEILING MOUNTED
	WALL MOUNTED NURSE CALL EMERGENCY STATION c/w PULLCORD
	WALL MOUNTED NURSE CALL EMERGENCY STATION c/w PULLCORD/AUDIO
	CODE BLUE STATION (CODES AS NOTED)
	CODE WHITE STATION (CODES AS NOTED)
	NURSE CALL MASTER STATION
	NURSE CALL TERMINAL
	NURSE CALL MARQUEE

GENERAL SYMBOLS	
	NOTE REFERENCE
	EQUIPMENT REFERENCE
	REVISION NUMBER
	WIRING HOME RUN

FIRE ALARM SYMBOLS	
	MANUAL STATION
	WALL MOUNTED BELL ANNUNCIATOR
	WALL MOUNTED BELL ANNUNCIATOR AND STROBE
	WALL MOUNTED HORN
	WALL MOUNTED HORN AND STROBE
	WALL MOUNTED STROBE
	CEILING STROBE
	WALL MOUNTED FIRE SPEAKER
	CEILING MOUNTED FIRE SPEAKER
	WALL MOUNTED FIRE SPEAKER WITH STROBE
	CEILING MOUNTED FIRE SPEAKER WITH STROBE
	CARBON MONOXIDE DETECTOR
	120V SMOKE ALARM (CO DENOTES INTEGRAL CARBON MONOXIDE DETECTOR)
	FIRE ALARM HEAT DETECTOR (RATE OF RISE UNLESS OTHERWISE INDICATED)
	FIRE ALARM SMOKE DETECTOR
	FIRE ALARM DUCT SMOKE DETECTOR
	FIRE ALARM ANNUNCIATOR PANEL
	FIRE ALARM CONTROL PANEL
	CENTRAL ALARM & CONTROL FACILITY
	MAGNETIC DOOR HOLDER
	PRESSURE SWITCH
	FLOW SWITCH
	TAMPER SWITCH
	DRY ALARM SWITCH
	END OF LINE RESISTOR
	FIRE ALARM CONTROL MODULE
	FIRE ALARM MONITOR MODULE
	FIRE ALARM FAULT ISOLATION MODULE

SECURITY SYMBOLS	
	WALL MOUNTED SECURITY CAMERA, FIXED
	WALL MOUNTED SECURITY CAMERA, PAN/TILT/ZOOM
	CEILING MOUNTED SECURITY CAMERA, FIXED
	CEILING MOUNTED SECURITY CAMERA, PAN/TILT/ZOOM
	CARD READER
	CARD READER / KEY PAD COMBINATION
	SECURITY KEY PAD (IA=INFANT ABDUCTION, PW=PATIENT WANDERING)
	KEY SWITCH OVERRIDE
	PUSHBUTTON
	REQUEST-TO-EXIT PUSHBUTTON
	REQUEST-TO-EXIT MOTION SENSOR
	PANIC/DURESS PUSHBUTTON
	BUZZER
	SECURITY HORN
	ELECTROMAGNETIC LOCK
	ELECTRIC STRIKE
	DOOR POSITION SWITCH
	WINDOW POSITION SWITCH
	CEILING MOUNTED SECURITY MOTION DETECTOR
	WALL MOUNTED SECURITY MOTION DETECTOR
	GLASS BREAK DETECTOR
	PATIENT WANDERING SYSTEM READER CONTROLLER
	PATIENT WANDERING SYSTEM DETECTOR/EXCITER SENSOR
	INFANT ABDUCTION SYSTEM READER CONTROLLER
	INFANT ABDUCTION SYSTEM DETECTOR/EXCITER SENSOR

CLOCK SYMBOLS	
	WALL MOUNTED SINGLE FACED CLOCK
	WALL MOUNTED DOUBLE FACED CLOCK
	WALL MOUNTED ELAPSED TIME CLOCK
	CEILING MOUNTED SINGLE FACED CLOCK
	CEILING MOUNTED DOUBLE FACED CLOCK

SCHEMATIC SYMBOLS	
	DRAW OUT LOW VOLTAGE CIRCUIT BREAKER
	LOW VOLTAGE CIRCUIT BREAKER
	HIGH VOLTAGE CIRCUIT BREAKER
	DRAW OUT HIGH VOLTAGE CIRCUIT BREAKER
	LOAD BREAK SWITCH
	DISCONNECT SWITCH
	FUSE
	TRANSFORMER
	AUTOTRANSFORMER
	TYPICAL DELTA-WYE ISOLATION TRANSFORMER
	CURRENT TRANSFORMER (# INDICATES NUMBER OF CTs IN GROUP)
	ZERO SEQUENCE CURRENT TRANSFORMER
	POTENTIAL TRANSFORMER (# INDICATES NUMBER OF PTs IN GROUP)
	TRANSFER SWITCH
	AUTOMATIC TRANSFER SWITCH C/W SINGLE ISOLATION/BYPASS
	AUTOMATIC TRANSFER SWITCH C/W DUAL ISOLATION/BYPASS
	OWNER POWER METER
	NORMALLY OPEN CONTACT
	NORMALLY CLOSED CONTACT
	GENERATOR
	DELTA CONNECTION
	WYE CONNECTION
	GROUND CONNECTION
	POTHEAD
	CAPACITOR
	SURGE PROTECTIVE DEVICE
	LIGHTNING ARRESTOR
	GROUND BUS
	PANELBOARD
	PUSH PULL SWITCH
	REVENUE METER
	DIGITAL MULTIMETER
	AMMETER
	VOLTMETER
	KEY SWITCH/KEY INTERLOCK
	CONNECTION
	RESISTOR
	SPACE HEATER
	LIGHT
	PROBE SENSOR - WET WELL APPLICATION
	FLOW SWITCH, NORMALLY CLOSED
	FLOW SWITCH, NORMALLY OPEN
	LEVEL SWITCH, NORMALLY CLOSED
	LEVEL SWITCH, NORMALLY OPEN
	PRESSURE SWITCH, NORMALLY CLOSED
	PRESSURE SWITCH, NORMALLY OPEN
	PUSH BUTTON MOMENTARY CONTACT, NORMALLY CLOSED
	PUSH BUTTON MOMENTARY CONTACT, NORMALLY OPEN
	NORMALLY-CLOSED, TIMED-CLOSED CONTACT (TIME DELAY ON DE-ENERGIZATION)
	NORMALLY-CLOSED, TIMED-OPEN CONTACT (TIME DELAY ON ENERGIZATION)
	NORMALLY-OPEN, TIMED-OPEN CONTACT (TIME DELAY ON DE-ENERGIZATION)
	NORMALLY-OPEN, TIMED-CLOSED CONTACT (TIME DELAY ON ENERGIZATION)
	THERMAL SWITCH, NORMALLY CLOSED
	THERMAL SWITCH, NORMALLY OPEN
	LIMIT SWITCH, NORMALLY CLOSED
	LIMIT SWITCH, NORMALLY OPEN
	HAND-OFF-AUTO SWITCH
	INDUCTOR/REACTOR/CHOKE COIL
	MOTOR OVERLOAD
	MAGNETIC MOTOR STARTER
	MANUAL MOTOR STARTER
	COMBINATION MAGNETIC MOTOR STARTER
	DOOR INTERLOCK SWITCH
	BREAK LINE
	CONTINUATION BREAK

ABBREVIATIONS	
AFF	ABOVE FINISHED FLOOR
AFG	ABOVE FINISHED GRADE
BMS	BUILDING MANAGEMENT SYSTEM
CC	CRASH CART
CP	CODE PINK
CW	CODE WHITE
CM	COFFEE MACHINE
DGS	DIAGNOSTIC SET
DIC	DICTATION
DT	DUAL TECHNOLOGY OCCUPANCY SENSOR
DY	DRYER
DW	DISHWASHER
EL	EXAMINATION LIGHT
ER	EXISTING DEVICE IN RELOCATED POSITION
EX	EXISTING DEVICE TO REMAIN
FAX	FAX MACHINE
FHD	FAUCET / HAND DRYER COMBINATION
GF	GROUND FAULT CIRCUIT INTERRUPTER
HD	HAND DRYER
HK	HOUSEKEEPING
IG	ISOLATED GROUND
IR	INFRARED OCCUPANCY SENSOR
JB	JUNCTION BOX
MCC	MOTOR CONTROL CENTER
MGAP	MEDICAL GAS ALARM PANEL
MW	MICROWAVE
N/C	NORMALLY CLOSED
N/O	NORMALLY OPEN
OC	ON CENTER
PL	PATIENT LIFT
PM	PATIENT MONITOR
PTR	PRINTER
RNG	RANGE
RE	REMOVE EXISTING DEVICE
REF	REFRIGERATOR
RL	RELOCATE EXISTING DEVICE
RP	REPLACE EXISTING DEVICE WITH NEW DEVICE
RR	REMOVE AND RE-INSTALL DEVICE IN ORIGINAL POSITION
SB	SOUNDER BASE
SPD	SURGE PROTECTIVE DEVICE
SWD	STACKED WASHER/DRYER
TR	TAMPER RESISTANT
TV	TELEVISION
TYP	TYPICAL
WP	WEATHERPROOF
WS	WASHER
*°	OCCUPANCY OR MOTION SENSOR BEAM SPREAD ANGLE

DRAWING LIST	
SHEET NUMBER	SHEET NAME
E-000	SYMBOL LEGEND
E-001	KEY PLAN
E-002	BASEMENT FLOOR PLAN
E-100	SECLUSION ROOM
E-200	PLASTER/TREATMENT ROOM
E-300	NURSE CALL STATION, MAIN ENTRANCE & SCHEDULES
E-400	DOOR DETAILS

ARCHITECTURE

5 - 320 Vernon Street  
Nelson BC  
V1L 4E4

250 354 4445  
coverac.ca

Copyright reserved. This design and drawing is the exclusive property of COVER Architectural Collaborative Inc. and cannot be used for any purpose without the written consent of the Architect. This drawing is not to be used for construction until issued for that purpose by the Architect. Prior to commencement of the Work the Contractor shall verify all dimensions, datums and levels to identify any errors and omissions; ascertain any discrepancies between this drawing and the full Contract Documents; and, bring these items to the attention of the Architect for clarification. These drawings must not be scaled. These drawings supersede previous issues.

CONSULTANTS



CLIENT



REVISIONS

No.	Date	Description
1	2019-06-21	50% REVIEW
2	2019-07-12	95% REVIEW
3	2019-08-07	95% REVIEW R1
4	2019-12-05	TENDER REVIEW
5	2020-01-27	ISSUED FOR TENDER
7	2020-02-27	ISSUED FOR CONSTRUCTION

BDH SECURE ROOM  
# 6319003 & BDH  
SECURITY UPGRADE  
# 6320003

ADDRESS

7649 22ND Street  
Grand Forks, BC  
V0H 1H2

PROJECT #

K000336A

DATE

2019-08-07

SHEET

SYMBOL LEGEND

E-000





5 - 320 Vernon Street  
Nelson BC  
V1L 4E4

250 354 4445  
coverac.ca

Copyright reserved. This design and drawing is the exclusive property of COVER Architectural Collaborative Inc. and cannot be used for any purpose without the written consent of the Architect. This drawing is not to be used for construction until issued for that purpose by the Architect. Prior to commencement of the Work the Contractor shall verify all dimensions, datums and levels to identify any errors and omissions; ascertain any discrepancies between this drawing and the full Contract Documents; and, bring these items to the attention of the Architect for clarification. These drawings must not be scaled. These drawings supersede previous issues.



No.	Date	Description
3	2019-08-07	95% REVIEW R1
4	2019-12-05	TENDER REVIEW
5	2020-01-27	ISSUED FOR TENDER
7	2020-02-27	ISSUED FOR CONSTRUCTION

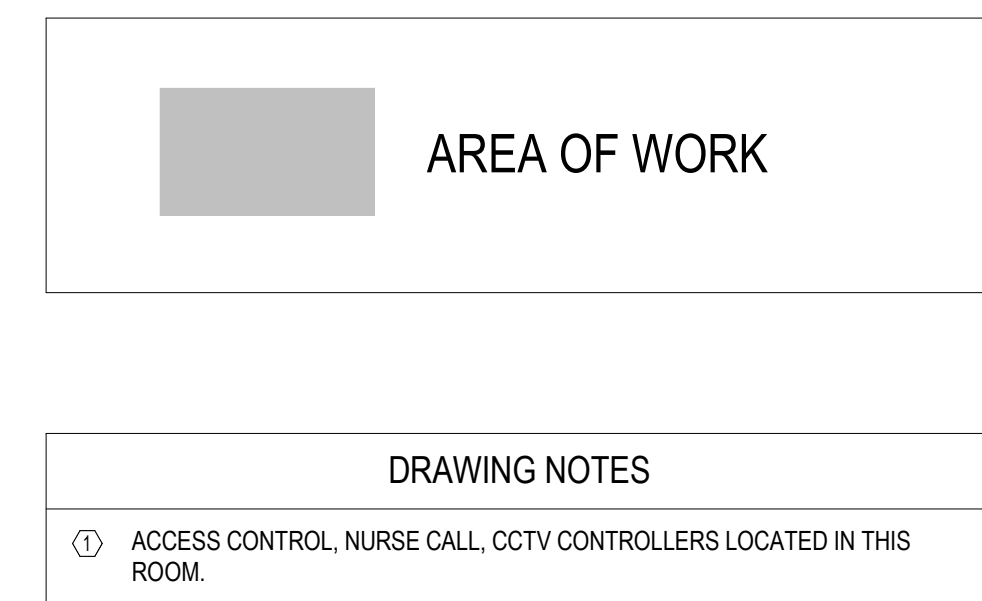
BDH SECURE ROOM  
# 6319003 & BDH  
SECURITY UPGRADE  
# 6320003

7649 22ND Street  
Grand Forks, BC  
V0H 1H2

DATE \_\_\_\_\_

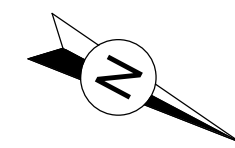
### KEY PLAN

**E-001**



### KEY PLAN - BUILDING

1 : 200



ARCHITECTURE

5 - 320 Vernon Street  
Nelson BC  
V1L 4E4

250 354 4445  
coverac.ca

Copyright reserved. This design and drawing is the exclusive property of COVER Architectural Collaborative Inc. and cannot be used for any purpose without the written consent of the Architect. This drawing is not to be used for construction until issued for that purpose by the Architect. Prior to commencement of the Work the Contractor shall verify all dimensions, datums and levels to identify any errors and omissions; ascertain any discrepancies between this drawing and the full Contract Documents; and bring these items to the attention of the Architect for clarification. These drawings must not be scaled. These drawings supersede previous issues.



CONSULTANTS



CLIENT



REVISIONS

No.	Date	Description
4	2019-12-05	TENDER REVIEW
5	2020-01-27	ISSUED FOR TENDER
7	2020-02-27	ISSUED FOR CONSTRUCTION

**BDH SECURE ROOM  
# 6319003 & BDH  
SECURITY UPGRADE  
# 6320003**

**ADDRESS**  
7649 22ND Street  
Grand Forks, BC  
V0H 1H2

**PROJECT #**  
K000336A

**DATE**  
2019-08-07

**SHEET**  
BASEMENT FLOOR PLAN

**E-002**



C:\Users\ndah\OneDrive\Documents\20200304 BDH Secure Rm Elev 2019 ndah.bkgm\CDP\02.rvt 2020/02/28 10:05:17 AM



ARCHITECTURE

5 - 320 Vernon Street  
Nelson BC  
V1L 4E4

250 354 4445  
coverac.ca

Copyright reserved. This design and drawing is the exclusive property of COVER Architectural Collaborative Inc. and cannot be used for any purpose without the written consent of the Architect. This drawing is not to be used for construction until issued for that purpose by the Architect. Prior to commencement of the Work the Contractor shall verify all dimensions, datums and levels to identify any errors and omissions; ascertain any discrepancies between this drawing and the full Contract Documents; and bring these items to the attention of the Architect for clarification. These drawings must not be scaled. These drawings supersede previous issues.



CONSULTANTS



CLIENT



REVISIONS

No.	Date	Description
1	2019-06-21	50% REVIEW
2	2019-07-12	95% REVIEW
3	2019-08-07	95% REVIEW R1
4	2019-12-05	TENDER REVIEW
5	2020-01-27	ISSUED FOR TENDER
7	2020-02-27	ISSUED FOR CONSTRUCTION

BDH SECURE ROOM  
# 6319003 & BDH  
SECURITY UPGRADE  
# 6320003

ADDRESS

7649 22ND Street  
Grand Forks, BC  
V0H 1H2

PROJECT #

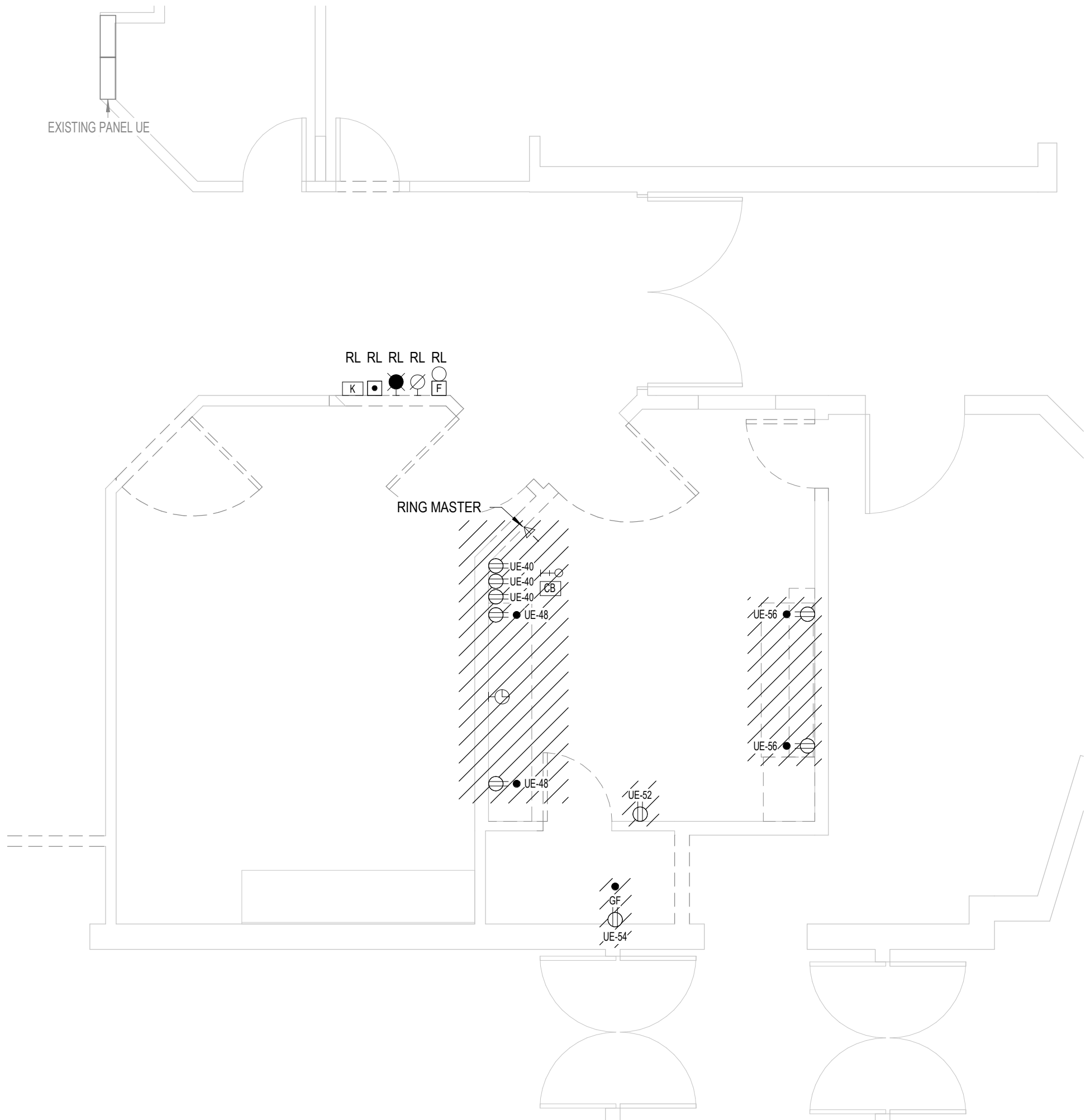
K000336A

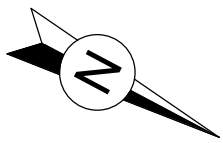
DATE

2019-08-07

SHEET

SECLUSION ROOM



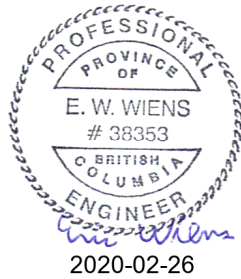


ARCHITECTURE

5 - 320 Vernon Street  
Nelson BC  
V1L 4E4

250 354 4445  
coverac.ca

Copyright reserved. This design and drawing is the exclusive property of COVER Architectural Collaborative Inc. and cannot be used for any purpose without the written consent of the Architect. This drawing is not to be used for construction until issued for that purpose by the Architect. Prior to commencement of the Work the Contractor shall verify all dimensions, datums and levels to identify any errors and omissions; ascertain any discrepancies between this drawing and the full Contract Documents; and bring these items to the attention of the Architect for clarification. These drawings must not be scaled. These drawings supercede previous issues.



CONSULTANTS



CLIENT



REVISIONS

No.	Date	Description
1	2019-06-21	50% REVIEW
2	2019-07-12	95% REVIEW
3	2019-08-07	95% REVIEW R1
4	2019-12-05	TENDER REVIEW
5	2020-01-27	ISSUED FOR TENDER
7	2020-02-27	ISSUED FOR CONSTRUCTION

BDH SECURE ROOM  
# 6319003 & BDH  
SECURITY UPGRADE  
# 6320003

ADDRESS

7649 22ND Street  
Grand Forks, BC  
V0H 1H2

PROJECT #

K000336A

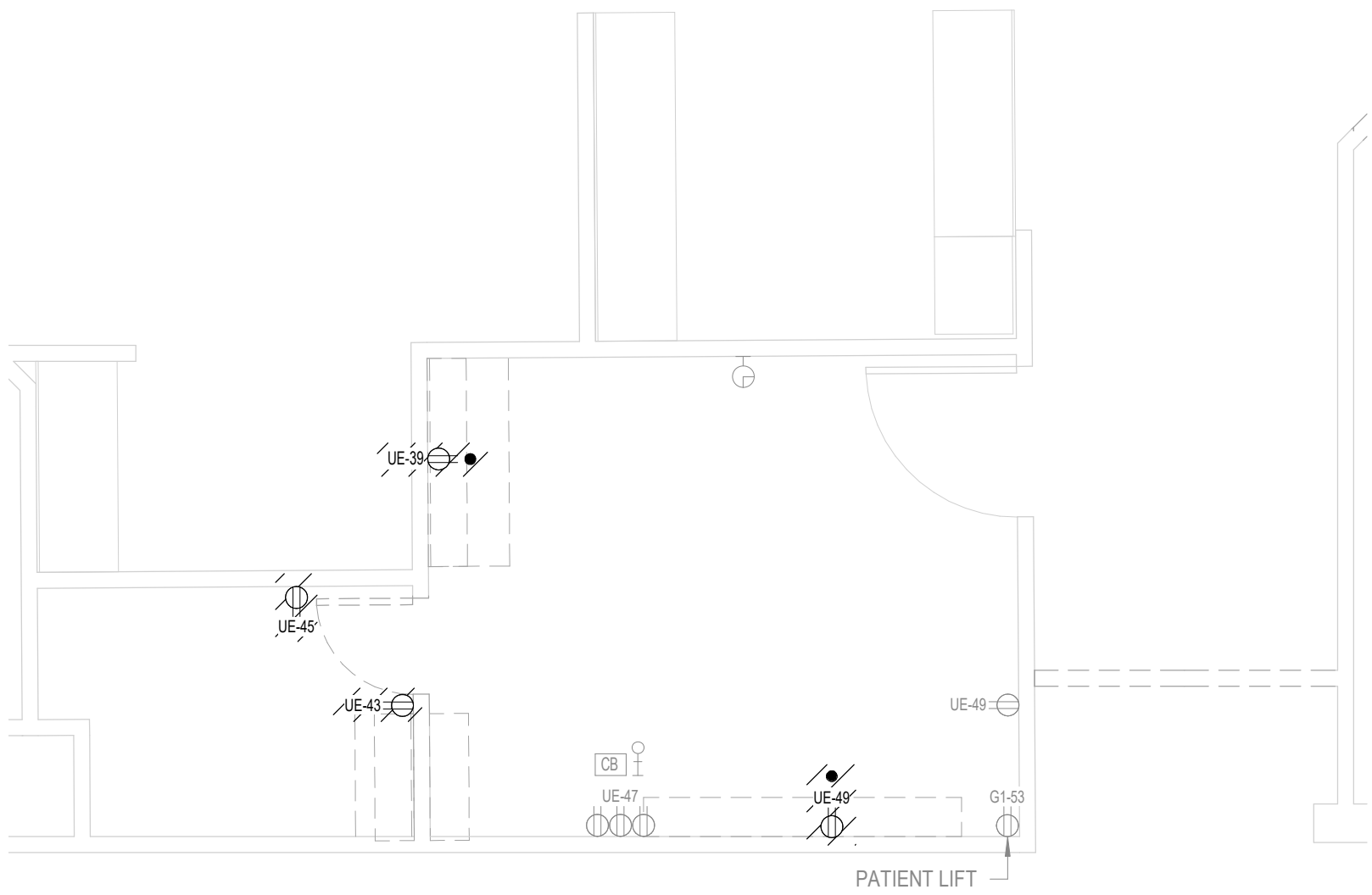
DATE

2019-08-07

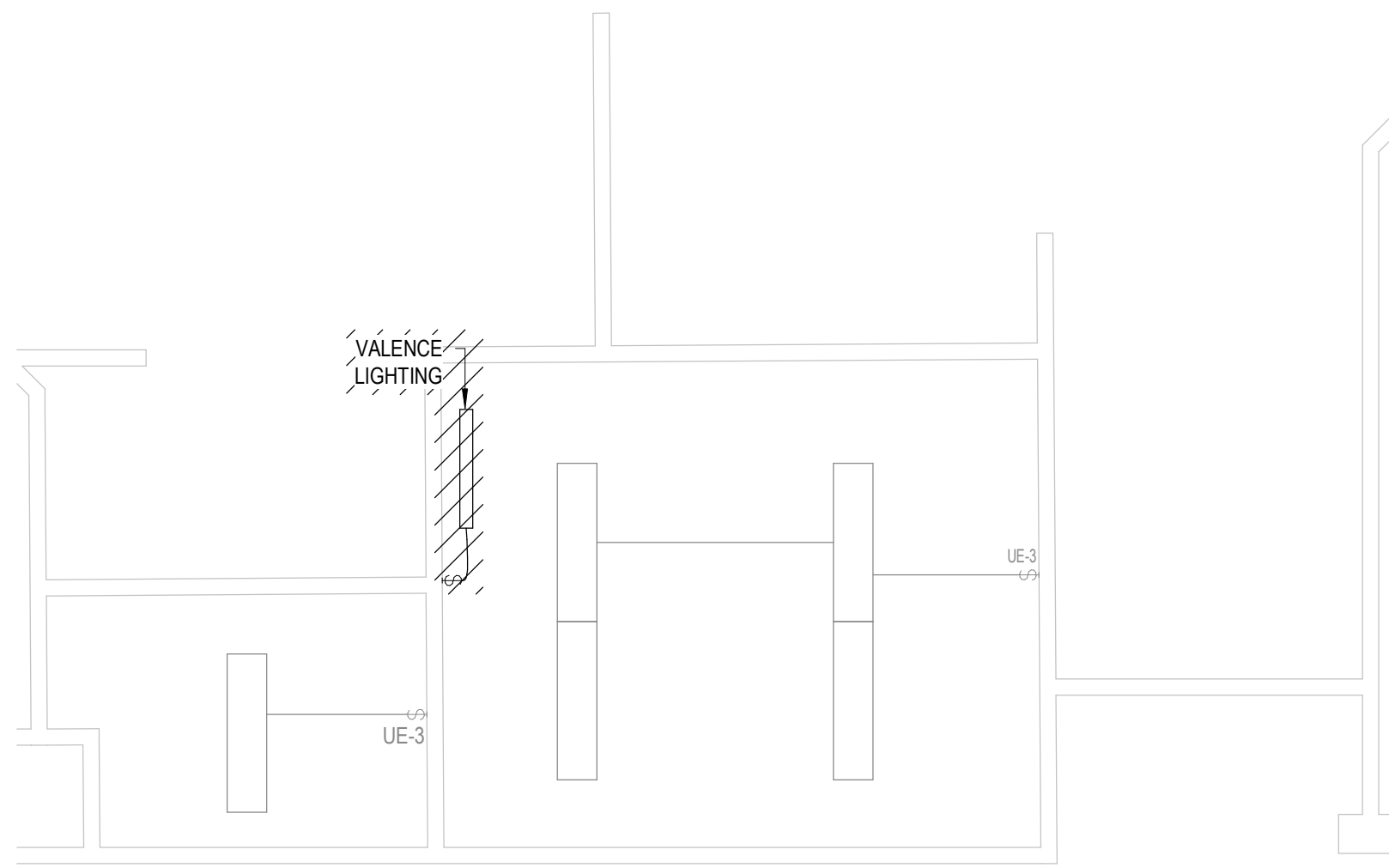
SHEET

PLASTER/TREATMENT ROOM

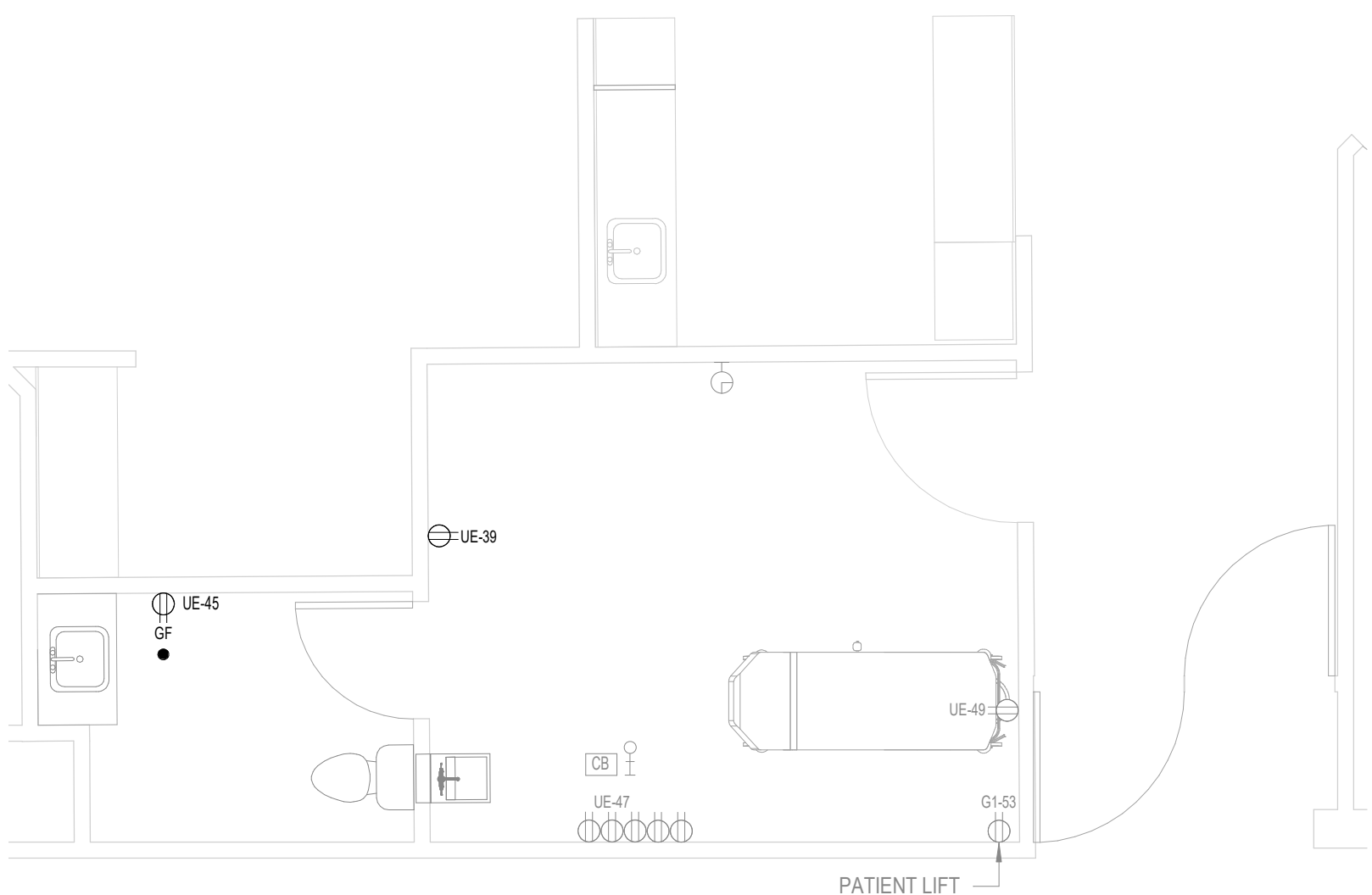
E-200



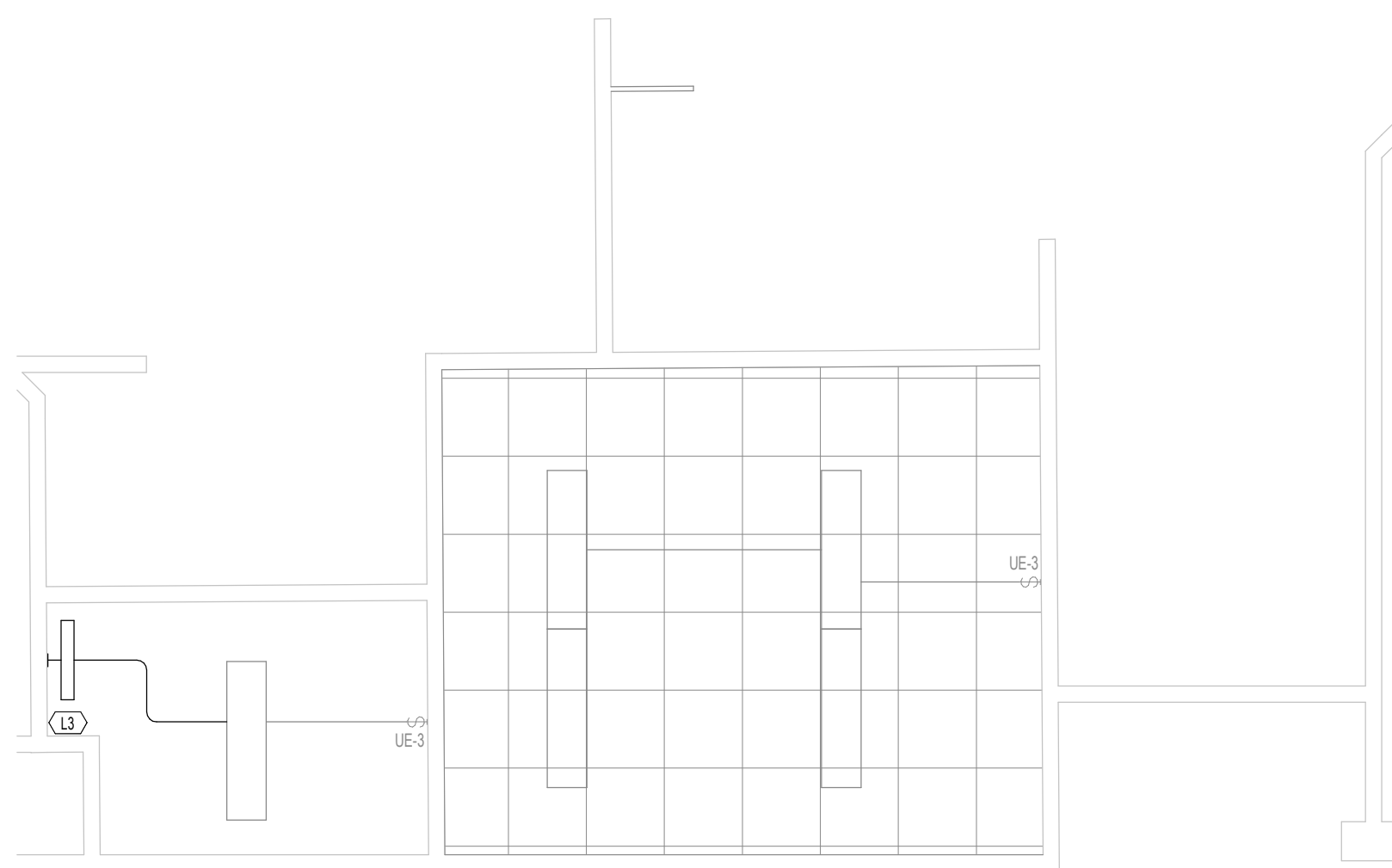
1 DEMOLITION PLAN - PLASTER ROOM  
E-200 1 : 50



2 DEMOLITION REFLECTED CEILING PLAN - PLASTER ROOM  
E-200 1 : 50






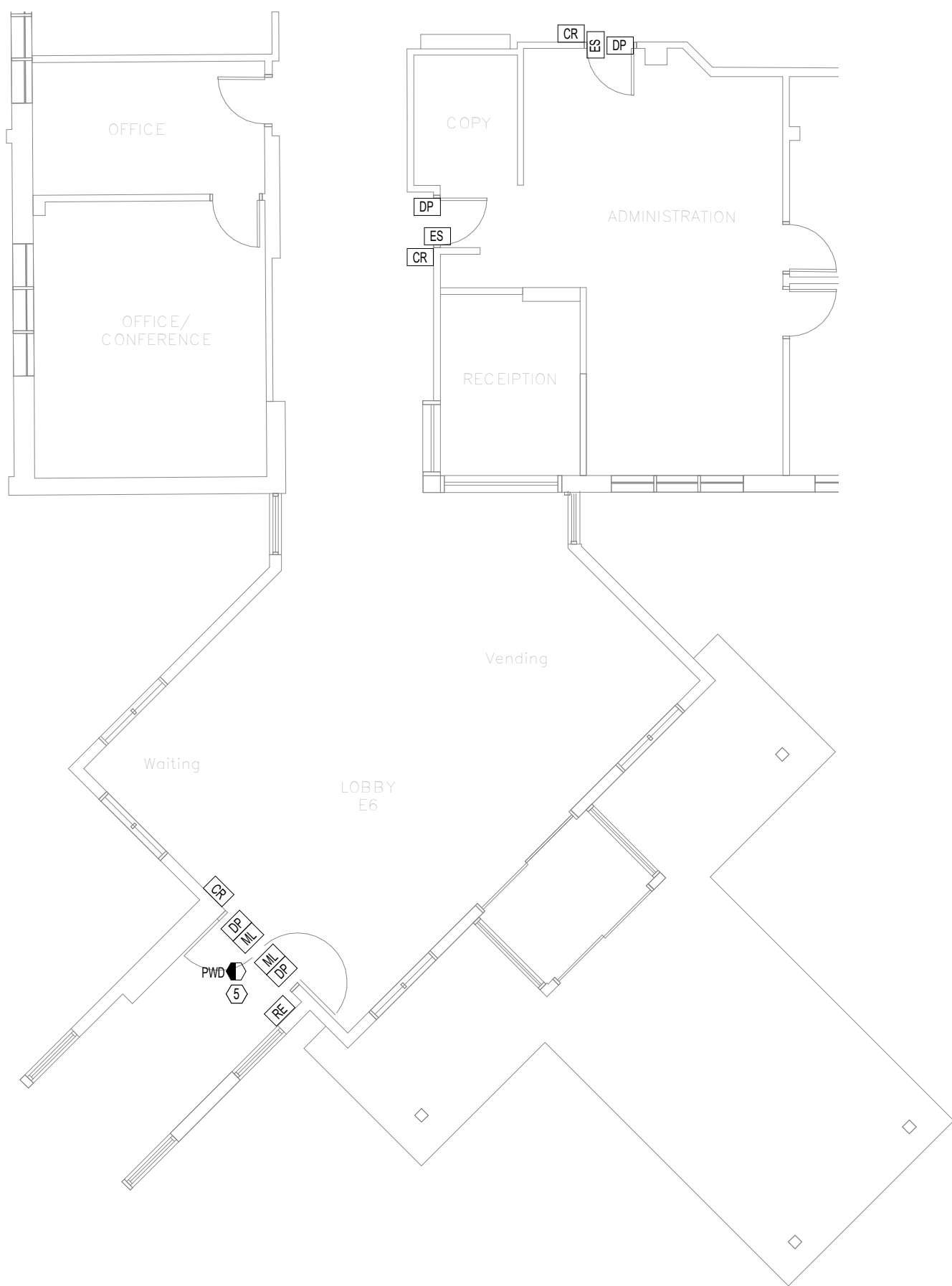
3 CONSTRUCTION PLAN - TREATMENT ROOM  
E-200 1 : 50



4 CONSTRUCTION REFLECTED CEILING PLAN - TREATMENT ROOM  
E-200 1 : 50

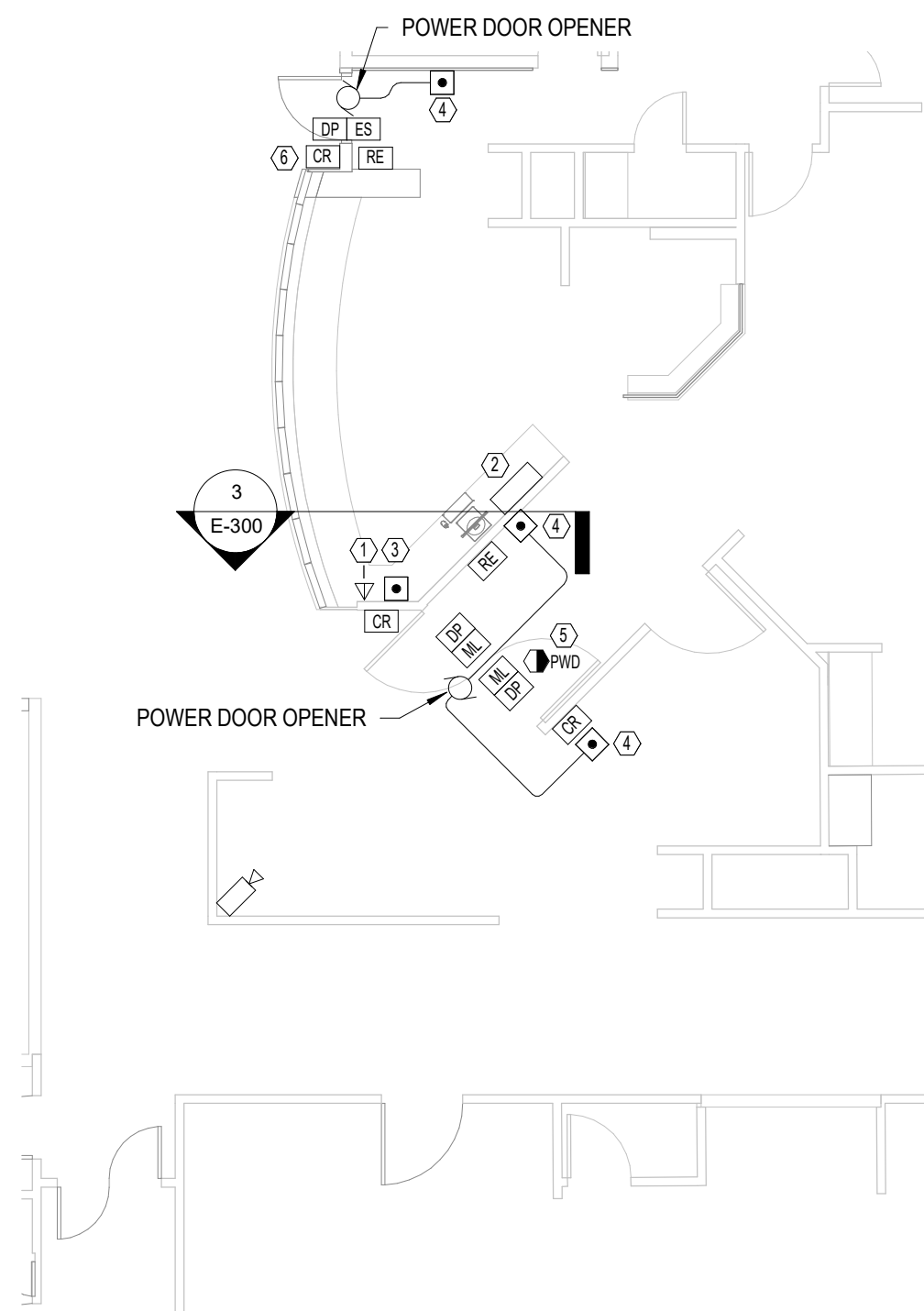


LUMINAIRE SCHEDULE												
TYPE	IMAGE	VOLTAGE	WATTAGE	LUMENS	COLOUR TEMP	CRI	INTEGRAL BATTERY BACKUP	INTEGRAL CONTROL SENSORS	MOUNTING	MANUFACTURER	CATALOGUE NO.	FINISH & NOTES
L1		120V	73.2	4980	3500K	88	YES	YES	RECESSED	FAILSAFE	FMR-D-12-4-LDR4-2-STD-35-UNV-88-ED1D-EL10W-SWBR	SWING OUT BRACKETS, 0-10V DIMMING 1%
L2		120V	38	3648	3000K	90	NO	NO	RECESSED	METALUX	4FP3830C9	DF-14W-U DRYWALL FRAME KIT
L3		120V	20	2000	3500K	83+	NO	NO	WALL	SHAPER	605-25-W-L3/835-UNV-ALP	



1 CONSTRUCTION PLAN - MAIN ENTRANCE  
E-300 1 : 100

- CONSTRUCTION KEY NOTES
- INTERCOM TO BE 2-WAY. VOLUME MAY BE LOWERED BUT NOT TURNED OFF. VOLUME IN SECLUSION ROOM TO BE ADJUSTED TO OWNERS LIKING NOT MODIFIABLE BY THE PATIENT. LOCATE IN EMERGENCY ROOM AS PER OWNERS REQUEST.
  - CCTV MONITOR TO BE VISIBLE TO STAFF ONLY. MONITORS LOCATED IN EMERGENCY ROOM AS PER OWNERS REQUEST. CCTV SYSTEM TO BE OPERATED AS A STAND ALONE SYSTEM BY THE NURSES AND CONNECTED TO THE HOSPITAL CCTV SYSTEM. HOSPITAL CCTV SYSTEM TO BE SET TO DO NOT RECORD. PROVIDE PRIVACY SCREEN FOR CCTV MONITOR.
  - PUSH BUTTON IN OWNER DESIGNATED LOCATION. PUSH BUTTON TO REMOTELY UNLOCK SECLUSION ROOM DOOR. PROVIDE LENSEL EXIT PUSH BUTTON. ADD LAMICOLD LABEL 'SECLUSION'.
  - HANDICAP DOOR OPENER PUSH BUTTON. PROVIDE A CIRCUIT FROM PANEL UE TO POWER DOOR OPENER. UE-65
  - NEW ROAMALERT DOOR CONTROLLER ABOVE T-BAR CEILING. PROVIDE EXCITER MOUNTED BESIDE DOOR. PROVIDE RS-485 TO EXISTING ROAMALERT NETWORK. PROVIDE POWER SUPPLY CONNECTED TO EMERGENCY CIRCUIT. PROVIDE KEYPAD ON EITHER SIDE OF THE DOOR TO TEMPORARILY DISABLE ROAMALERT SYSTEM. SYSTEM TO ALARM WHEN PATIENT WALKS THROUGH.
  - PROVIDE ALL REQUIRED HARDWEAR AND PROGRAMMING TO AUTOMATICALLY OPEN DOOR WHEN VALID CARD IS SWIPED ON CARD READER.



2 CONSTRUCTION PLAN - NURSE STATION  
E-300 1 : 100

NAMEPLATE

PANEL UE

VOLTAGE

120/208V

BUS AMPACITY

225

AMPS

LOCATION

TYPE

\*\*\*\*

\*\*\*\*

CONTRACTOR TO VERIFY CIRCUITS SHOWN ARE CORRECT.

IF AS FOUND CONDITIONS DIFFER FROM THOSE SHOWN

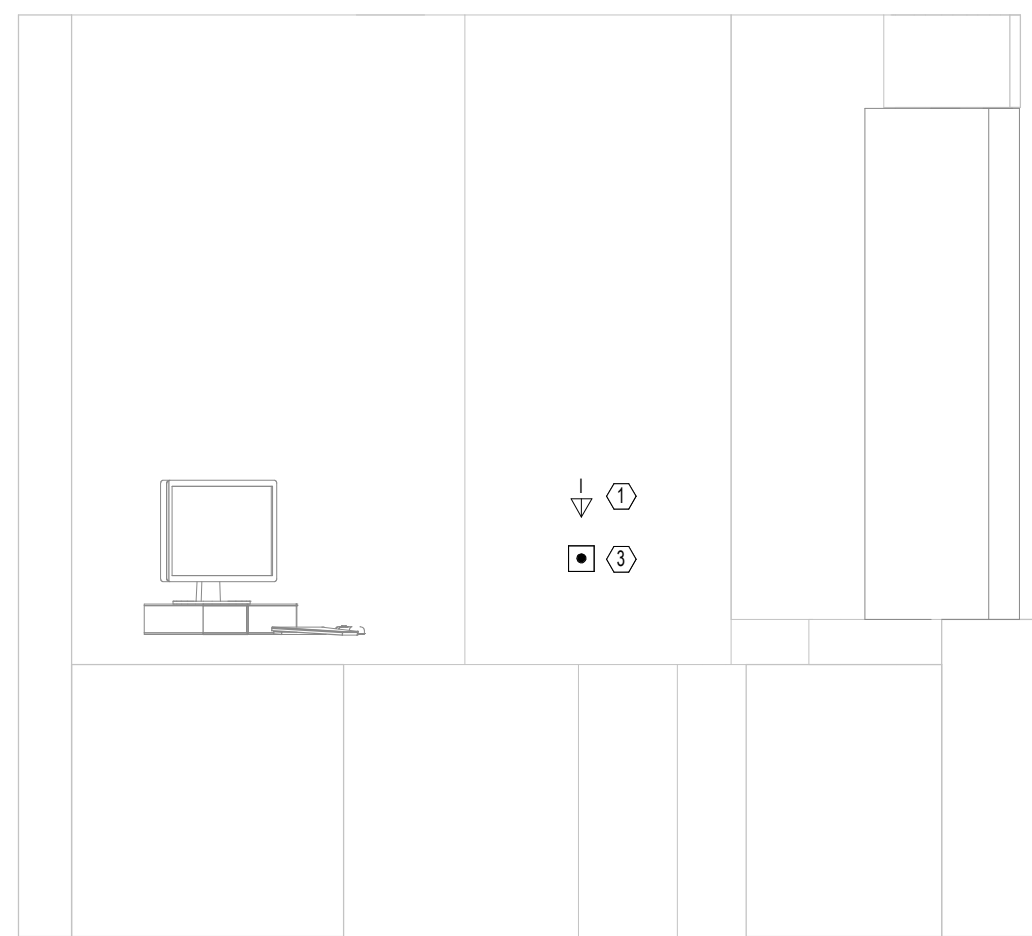
ON THE DRAWING THE CONTRACTOR SHALL MAKE

ADJUSTMENTS TO SUIT THE INTENT OF THE WORK.

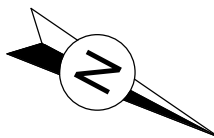


CCT. No.	LOAD	BRKR	BRKR	LOAD	CCT. No.
1	UTILITY & BATHROOM LIGHTING	1P15A	1P15A	TRAUMA ROOM LIGHTING	2
3	PLASTER ROOM LIGHTING	1P15A	1P15A	TRAUMA SURGICAL LIGHTING	4
5	PLASTER SURGICAL LIGHTING	1P15A	1P15A	TREATMENT ROOM LIGHTING	6
7	STORAGE & X-RAY LIGHTING	1P15A	1P15A	TREATMENT ROOM SURGICAL LIGHTING	8
9	SCRUB SINK	1P15A	1P15A	HALL RECEPTACLES	10
11		1P15A	1P15A	HALL CORRIDOR RECEPTACLES	12
13	EMERGENCY STORAGE RECEPTACLES	1P15A	1P15A	DIRTY UTILITY RECEPTACLES	14
15	EMERGENCY STORAGE RECEPTACLES	1P15A	1P15A	RECEPTACLES HALL	16
17	EMERGENCY STORAGE RECEPTACLES	1P15A	1P15A	RECEPTACLES HALL	18
19	EMERGENCY STORAGE RECEPTACLES	1P15A	1P20A	RECEPTACLES HALL	20
21	HANDICAP RECEPTACLES	1P20A	1P15A	RECEPTACLES HALL	22
23	CLEAN UTILITY RECEPTACLES	1P15A	1P20A	X-RAY STORAGE RECEPTACLES	24
25	CLEAN UTILITY RECEPTACLES	1P20A	1P15A	X-RAY STORAGE RECEPTACLES	26
27	CLEAN UTILITY RECEPTACLES	1P15A	1P15A	RECEPTACLES HALL	28
29	DIRTY UTILITY RECEPTACLES	1P15A	1P20A	RECEPTACLES HALL	30
31	DIRTY UTILITY RECEPTACLES	1P15A	1P15A	WARM CAB.	32
33	EMPTY		1P15A	TRAUMA ROOM COMPUTER RECEPTACLE	34
35	EMPTY		1P15A	RECEPTACLES	36
37	PLASTER ROOM RECEPTACLES	1P15A	1P15A	TRAUMA ROOM RECEPTACLES	38
39	PLASTER ROOM RECEPTACLES	1P15A	1P15A	TRAUMA ROOM RECEPTACLES	40
41	SPARE CCT	1P15A	1P15A	TRAUMA ROOM LIFT	42
43	RECEPTACLES	1P15A	2P	MEDICAL GAS BOOM	44
45	RECEPTACLES	1P15A	15A		46
47	RECEPTACLES	1P15A	1P15A	TREATMENT ROOM MODULE RECEPTACLES	48
49	RECEPTACLES	1P15A	1P15A	RECEPTACLES	50
51	MEDICAL GAS AL	1P15A	1P15A	TREATMENT ROOM RECEPTACLES	52
53	CORRIDOR RECEPTACLES	1P20A	1P15A	TREATMENT ROOM WASH. RECEPTACLES	54
55	X-RAY ROOM P.A.C.S	1P15A	1P15A	TREATMENT ROOM RECEPTACLES	56
57	P.A.C.S OFFICE & ENERGY	1P15A	1P20A	VITROS 250 IN LAB	58
59	P.A.C.S CONTROL	1P15A	1P15A	EMERG RAULAND MARQUEE #5	60
61	SERVER ROOM BY X-RAY RECEPTACLES	1P15A	1P15A	LASER PRINTER X-RAY	62
63	NURSE CALL RECEPTACLES	1P15A	1P20A	LASER PROCESSOR X-RAY	64
65	DOOR OPENER	1P15A	3P	EMERGENCY DECO SANITIZER	66
67		1P15A			68
69	X-RAY ROOM	1P15A	30A		70
71	STERIS	1P20A	1P15A	OUTLET BELOW PANEL	72
73		1P15A		EMPTY	74
75	X-RAY PORTABLE X-RAY RECEPTACLES	1P15A		EMPTY	76
77		1P15A		EMPTY	78
79	MEDICAL GAS ALARM LIGHTING	1P15A		EMPTY	80
81	AUTO DOORS	1P15A	1P15A	EMERGENCY LIGHTS TREATMENT & TRAUMA	82
83	EMPTY		1P15A	AMB CANOPY LIGHTS + PE+ EMERG SIGN	84

4 PANEL UE - EXISTING  
E-300 NTS



3 NURSE CALL STATION FILING WALL  
E-300 1 : 25



ARCHITECTURE

5 - 320 Vernon Street  
Nelson BC  
V1L 4E4

250 354 4445  
coverac.ca

Copyright reserved. This design and drawing is the exclusive property of COVER Architectural Collaborative Inc. and cannot be used for any purpose without the written consent of the Architect. This drawing is not to be used for construction until issued for that purpose by the Architect. Prior to commencement of the Work the Contractor shall verify all dimensions, datums and levels to identify any errors and omissions; ascertain any discrepancies between this drawing and the full Contract Documents; and bring these items to the attention of the Architect for clarification. These drawings must not be scaled. These drawings supersede previous issues.



CONSULTANTS



CLIENT



REVISIONS

No.	Date	Description
2	2019-07-12	95% REVIEW
3	2019-08-07	95% REVIEW R1
4	2019-12-05	TENDER REVIEW
5	2020-01-27	ISSUED FOR TENDER
6	2020-02-03	ADDENDUM 02
7	2020-02-27	ISSUED FOR CONSTRUCTION

BDH SECURE ROOM  
# 6319003 & BDH  
SECURITY UPGRADE  
# 6320003

ADDRESS

7649 22ND Street  
Grand Forks, BC  
V0H 1H2

PROJECT #

K000336A

DATE

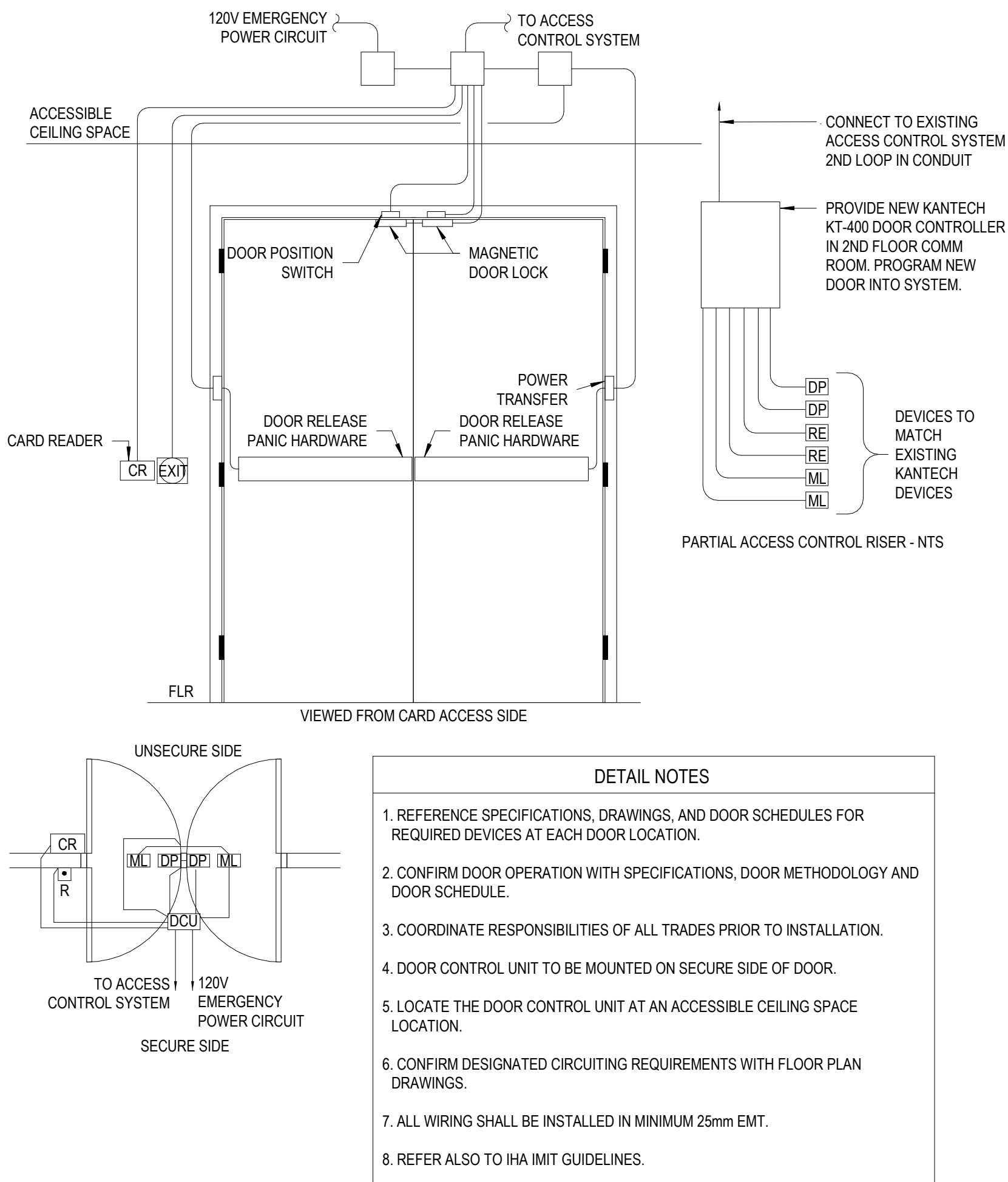
2019-08-07

SHEET

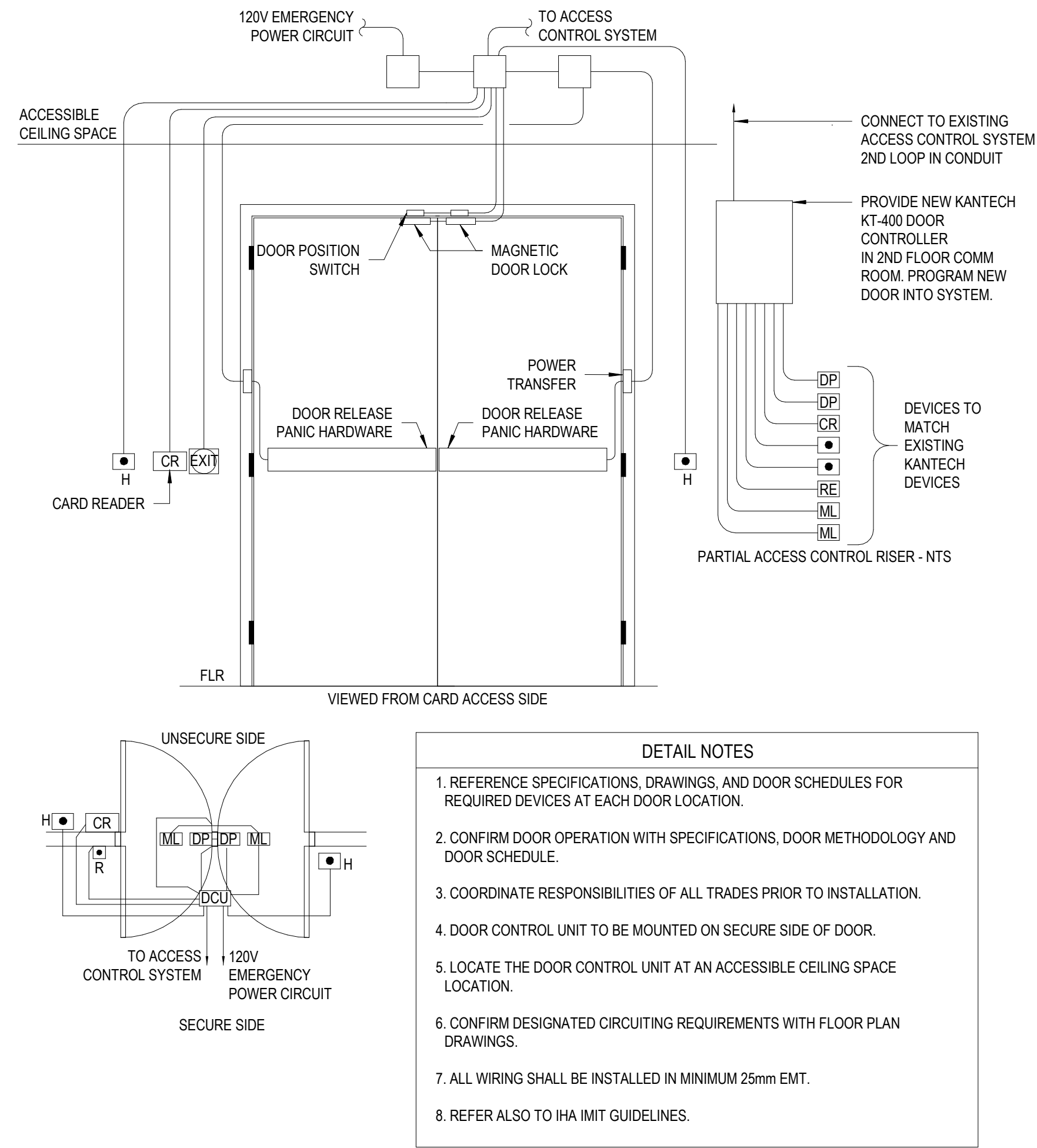
NURSE CALL STATION, MAIN  
ENTRANCE & SCHEDULES

E-300

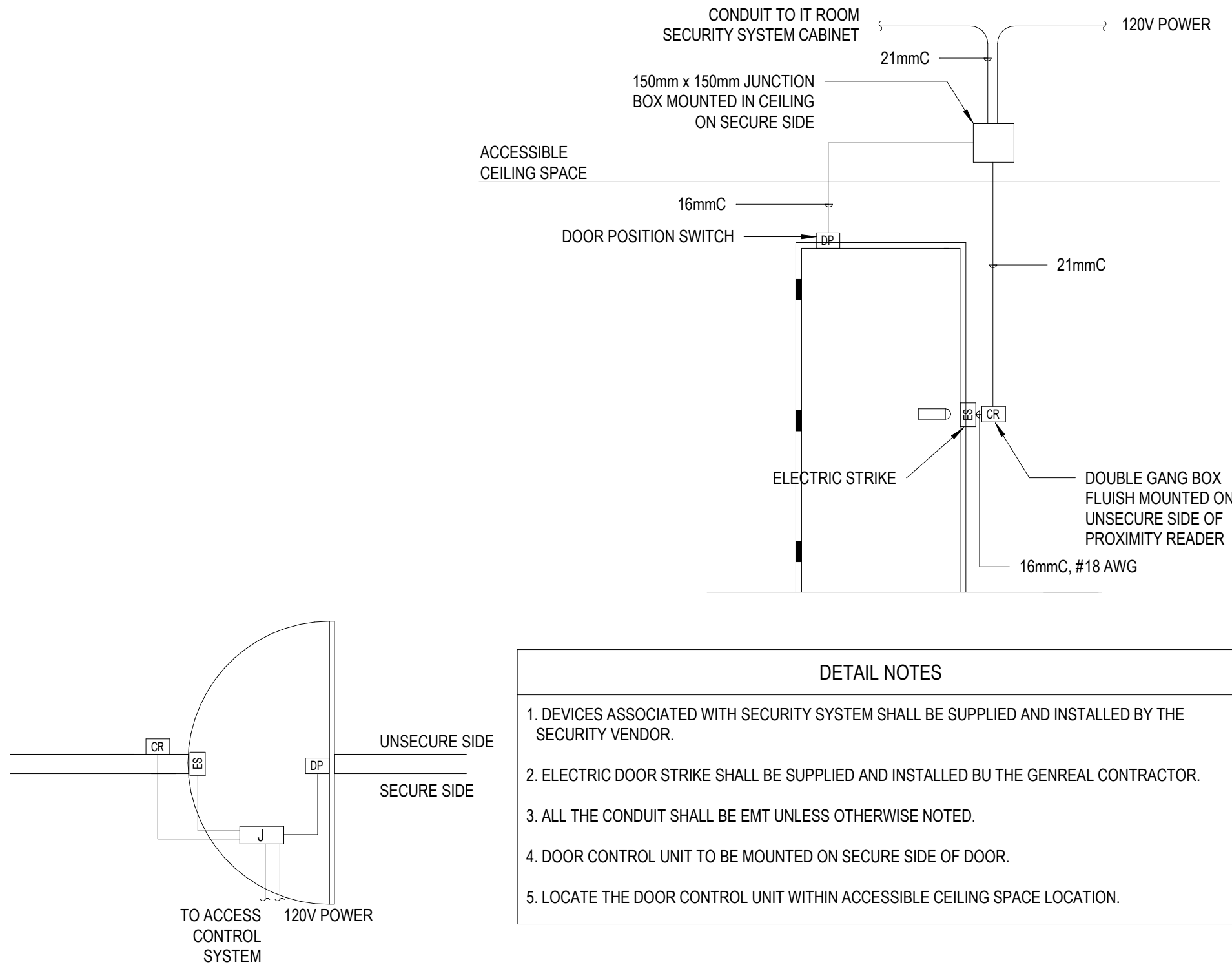
C:\Users\mohd.beggs\Documents\6320003\BDH Secure Rm Elev 2019\_mohd.beggs\CDP\G-01.rvt 2020/02/26 10:52 AM



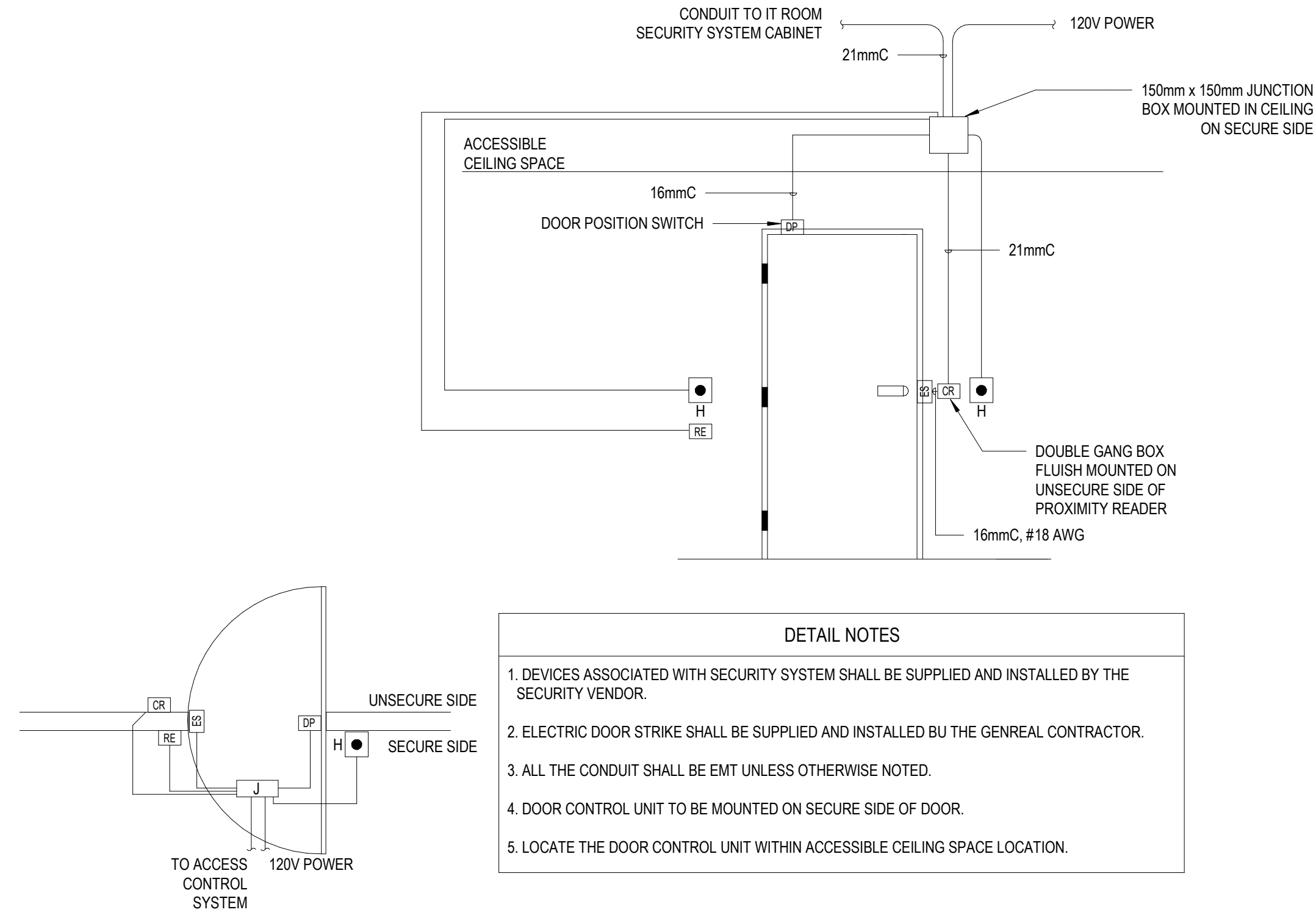
1 ACCESS CONTROL DOOR - MAIN ENTRANCE  
E-400 1 : 750



2 ACCESS CONTROL DOOR - NURSE STATION  
E-400 NTS



3 ACCESS CONTROL SINGLE DOOR - ADMINISTRATION SINGLE DOOR  
E-400 1 : 100



4 ACCESS CONTROL SINGLE DOOR - NURSE STATION SINGLE DOOR  
E-400 1 : 100