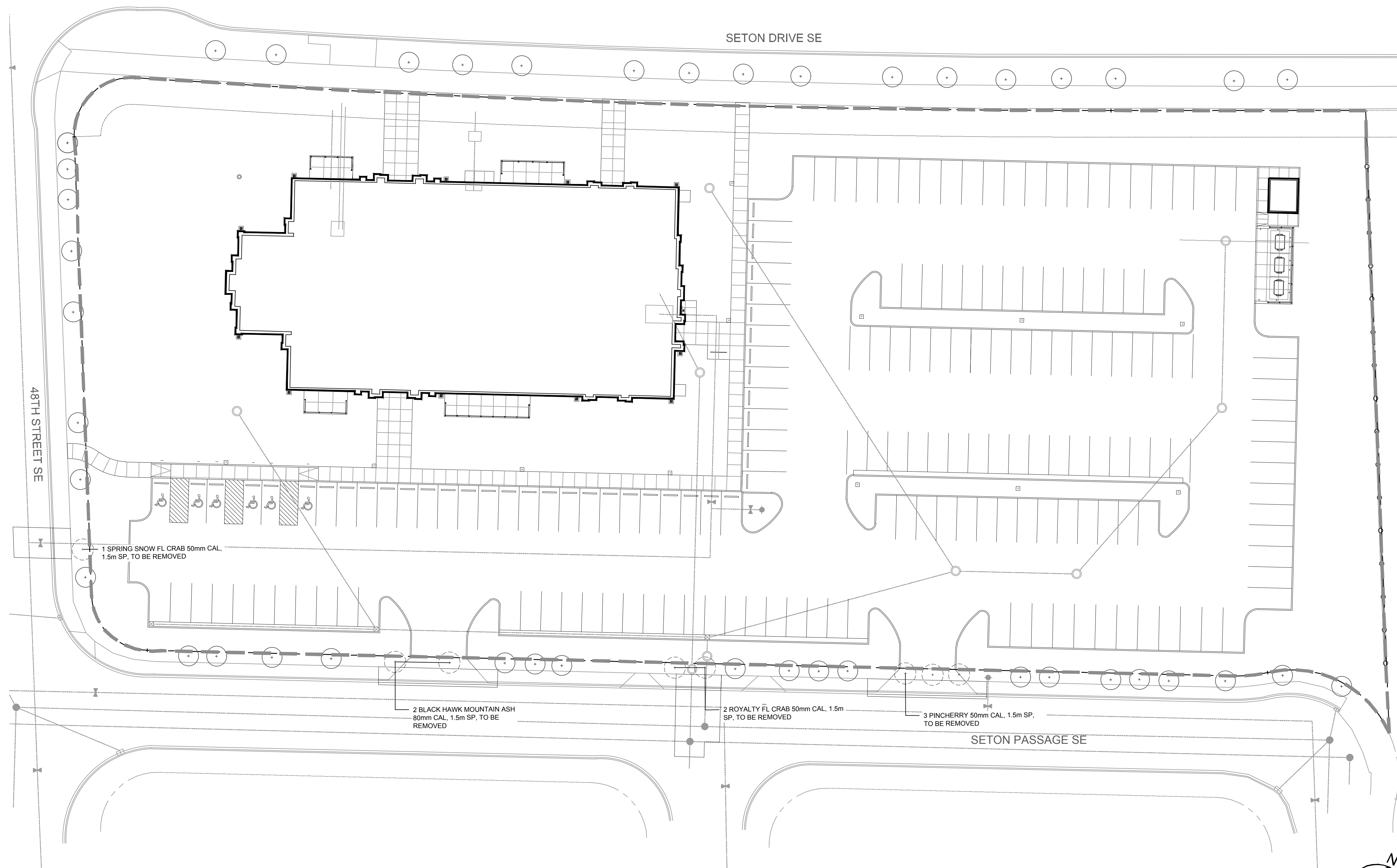


LEGEND	
	PROPERTY LINE (SEE SD101)
	EXISTING TREES TO REMAIN
	EXISTING DECIDUOUS TREES TO BE REMOVED (8 TREES)
	6' CONSTRUCTION FENCE ON THE PROPERTY LINE

LEGAL:

- LOT 1, BLOCK 5
- PLAN 181 1198



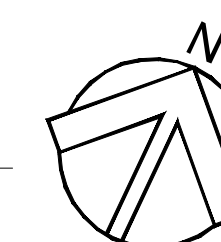
NOTES:

- EXISTING TREE AND SHRUB COUNT EXCEEDS CITY OF CALGARY CURRENT GUIDELINES
- TREE PROTECTION MEASURES AS PER CITY OF CALGARY TREE PLAN GUIDELINES. (SEE PAGE 76 CURRENT EDITION OF THE CITY OF CALGARY PARKS DEVELOPMENT GUIDELINES AND STANDARD SPECIFICATIONS LANDSCAPE CONSTRUCTION)
- TEMPORARY TREE PROTECTION FENCING OR BARRIER MATERIAL SHALL BE A BRIGHT OR CONTRASTING COLOUR AND BE DURABLE. FENCE POSTS SHALL BE COMPARABLE TO METAL T-POSTS OR HEAVIER. FENCE WILL BE MAINTAINED IN AN UPRIGHT POSITION THROUGHOUT THE DURATION OF THE PROJECT, AS PER CITY OF CALGARY PARKS TREE PROTECTION PLAN SPECIFICATIONS.
- ALL EXISTING LANDSCAPING TO REMAIN UNLESS NOTED OTHERWISE. (TYPICAL)
- ALL TREES WITHIN 6.0m OF THE PROJECT BOUNDARY SHALL BE PROTECTED BY FENCING DESCRIBED IN THE NOTES ABOVE.
- PRIOR TO CONSTRUCTION, AND AFTER TEMPORARY FENCE INSTALLATION, THE CONTRACTOR SHALL CONTACT CITY OF CALGARY URBAN FORESTRY AND ARRANGE AN ON SITE MEETING PRIOR TO COMMENCING CONSTRUCTION.
- THE CONTRACTOR SHALL ADHERE TO ALL CITY OF CALGARY URBAN FORESTRY REQUIREMENTS AND APPROVALS PRIOR TO COMMENCING CONSTRUCTION.
- (SEE CITY OF CALGARY "TREE PROTECTION PLANS FOR CAPITAL PROJECTS" BROCHURE.)
- NO STORAGE OF CONSTRUCTION MATERIALS SHALL OCCUR OUTSIDE OF PERIMETER CONSTRUCTION FENCE.
- SEE SD100 FOR SHALLOW AND DEEP EXISTING SERVICES.
- GRADING AND CONTOURS BEYOND SCOPE OF WORK TO REMAIN AS EXISTING.
- MAIN FLOOR GEODETIC ELEVATION IS 1041.55m.
- BUILDING SETBACK
FROM A PROPERTY LINE SHARED WITH A STREET - MIN 3m
FROM A PROPERTY LINE SHARED WITH ANOTHER PARCEL - MIN 1.2m

TREE PROTECTION PLAN APPROVAL ONLY APPLIES TO PUBLIC TREES. REMOVAL OF TREES WHICH ARE NOT FAC'D WILL NEED TO BE DISCUSSED WITH THE DEVELOPER

MARK	DATE	REVISION
1	2019-10-04	ISSUED FOR DP
2	2019-12-20	ISSUED FOR PTD
3	2020-01-31	ISSUED FOR CONSTRUCTION

ARCHITECT	
 GDG <i>Architectural Group</i>	
1919 10th Avenue S.W. Calgary, Alberta, T3C 0K3 (403) 229-3233	
CONSULTANTS	
STRUCTURAL ROCKY MOUNTAIN ENGINEERING INC. 1919 10th Avenue S.W. Calgary, Alberta T3C 0K3 (403) 274-0227	
MECHANICAL AME Group Consulting Mechanical Engineers 710 - 1122 4th Street S.W. Calgary, Alberta T2R 1M1 (403) 252-2333	
ELECTRICAL Maskell Plenzik & Partners Engineering Inc. 206, 610-70th Avenue S.E. Calgary, Alberta T2H 2J6 (403) 509-2005	
NATIONAL ENERGY CODE 908 Engineering Incorporated P.O. Box 20020 Red Deer, Alberta T4N 6X5 (403) 986-2939	
AUDIO / VIDEO SLR Consulting (Canada) Limited 1185, 10201 Southport Road S.W. Calgary, Alberta T2W 4X9 (403) 268-2030	
LANDSCAPE IBI Group 3rd Floor - 227 11th Avenue S.W. Calgary, Alberta T2R 1R9 (403) 270-5600	
CIVIL ELI Consulting Inc. 230 Edgebrook Circle N.W. Calgary, Alberta T3A 5A2 (403) 607-0049	
GDG NUMBER	16123
STAMP	
 The Alberta Association of Landscape Architects <i>Nataliya Imshenetska</i>	
PROJECT FOR	
THE CHURCH OF JESUS CHRIST OF LATTER-DAY SAINTS	
PROJECT NAME	
SETON GRANGER 250	
CALGARY ALBERTA BOW RIVER STAKE	
PROJECT ADDRESS	
530 SETON PASSAGE S.E. CALGARY, ALBERTA	
SHEET TITLE	
EXISTING CONDITIONS AND TREE PROTECTION PLAN	
PROJECT DESIGNATION	
500-7688-1901-0101	
WO NUMBER	SHEET NO.
GML 1068	
PROPERTY NUMBER	
500-7688	
DEVELOPMENT NUMBER	
G25-MH-17-05	L101
DATE	
FEB 2020	



SITE STATISTICS (LAND USE BYLAW, M-1)

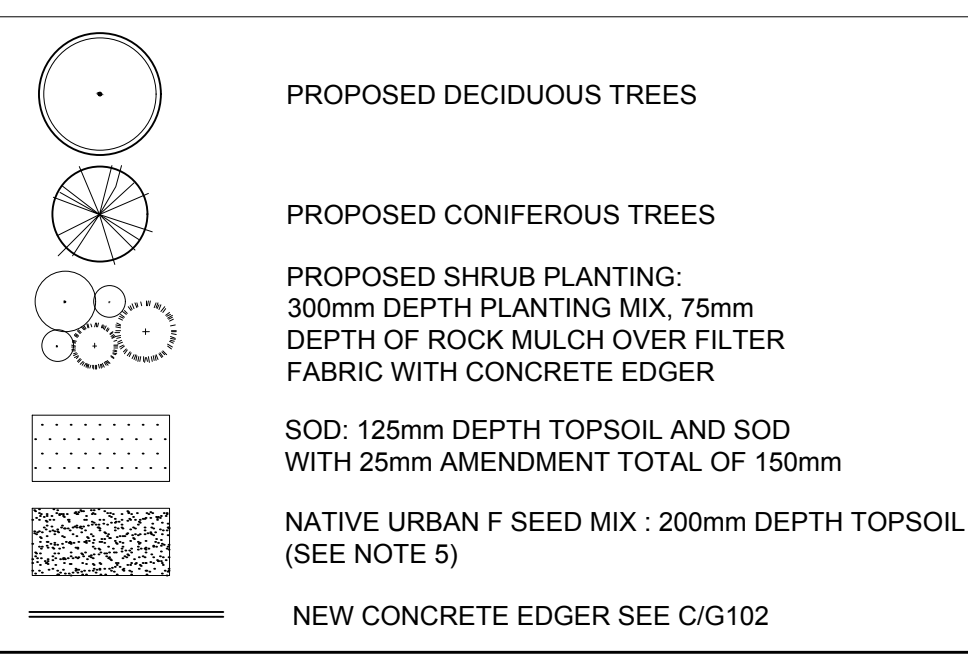
TOTAL SITE DEVELOPMENT AREA	12,554.93 m ²	100%
BUILDING FOOTPRINTS	1551.67 m ²	12.35%
ROAD/PARKING	5740.11 m ²	45.72%
LANDSCAPED AREA (INCL DECKS, PATIOS & PATHWAYS) REQUIRED (LAND USE BYLAW, M-1)	5021.97 m ²	40.00 %
LANDSCAPED AREA PROVIDED	5263.90 m ²	41.93%
HARDSCAPE	594.94 m ²	(11.30% of total landscape area provided)
SOFTSCAPE	4668.96 m ²	(88.70 % of total landscape area provided)

REQUIRED 2 SHRUBS/45m² OF LANDSCAPE AREA - 224 SHRUBS TOTAL
 REQUIRED 1 TREE/45m² OF LANDSCAPE AREA - 112 TREES TOTAL
 A MINIMUM OF 25% OF ALL TREES PROVIDED MUST BE CONIFEROUS (min 28 CONIFEROUS + 84 DECIDUOUS)
 THE MINIMUM LANDSCAPED AREA OF 40% (5021.97 m²) REQUIRED (LAND USE BYLAW, M-G)

SUMMARY OF TREES PROVIDED

PROPOSED DECIDUOUS TREES (50mm CAL)	42 TREES
PROPOSED DECIDUOUS TREES (min 50% - 80mm CAL)	42 TREES
PROPOSED CONIFEROUS TREES (2000mm HT)	15 TREES
PROPOSED CONIFEROUS TREES (min 50% - 3000mm HT)	15 TREES
TOTAL SHRUBS PROVIDED 394 SHRUBS (NOT INCLUDING GRASSES)	
TOTAL TREES PROVIDED	114 TREES

LEGEND



LANDSCAPE DATA

TOTAL SITE AREA	12,554.93 sq. m.
ROOF AREA	1,551.67 sq. m.
LANDSCAPE AREA (SOFT AND HARD)	5263.90 sq. m.
TREES REQUIRED	112
PROPOSED CONIFEROUS TREES	30 (26%)
PROPOSED DECIDUOUS TREES	84 (74%)
TOTAL TREE QUANTITY	114

DESIGN CRITERIA

ECO REGION	9.1
CLIMATE	ZONE 4A
ZONING ORDINANCE	PI-1
WATER AVAILABILITY	IRRIGATION PLAN BASED ON 50 PSI 50 GPM
SOIL TYPE	IMPORTED TO MEET SPEC
SLOPES	FLAT
WIND	WEST/ SOUTHWEST
URW	3.5m NORTH
MICROCLIMATES	N/A
SOIL PH	TO MEET SPEC
LAWN AREA PERCENTAGE	25%
UNDEVELOPED PROPERTY	NONE
IRRIGATION SYSTEM	YES - AUTOMATIC

TREE PLANTING SCHEDULE

QTY.	BOTANICAL NAME	COMMON NAME	SIZE	CONDITION
CONIFEROUS TREES				
1	PICEA PUNGENS	COLORADO SPRUCE	2000mm HT.	B&B
4	PICEA PUNGENS 'MONTGOMERY'	MONTGOMERY SPRUCE	2000mm HT.	B&B
5	PICEA PUNGENS 'BACHERI'	BAKERI SPRUCE	2000mm HT.	B&B
5	PICEA PUNGENS 'BACHERI'	BAKERI SPRUCE	2000mm HT.	B&B
3	PICEA PUNGENS 'HOOPSII'	HOOPSII SPRUCE	3000mm HT.	B&B
12	PINUS CONTORTA LATIFOLIA	LODGEPOLE PINE	3000mm HT.	B&B
DECIDUOUS TREES				
8	CRATAEGUS X MORDENENSIS 'TOBA'	TOBA HAWTHORN	80mm CAL.	B&B
14	MALUS x 'SPRING SNOW'	SPRING SNOW FLOWERING CRABAPPLE	80mm CAL.	B&B
3	MALUS x 'RADIANT'	RADIANT FLOWERING CRAB	80mm CAL.	B&B
3	POPULUS TREMULOIDES	TREMBLING ASPEN	50mm CAL.	B&B
10	POPULUS TREMULA 'ERECTA'	SWEDISH COLUMNAR ASPEN	50mm CAL.	B&B
12	SORBUS AUCUPARIA 'FASTIGIATA'	PYRAMIDAL MOUNTAIN ASH	50mm CAL.	B&B
8	TILIA AMERICANA 'DUROS'	TRUE NORTH LINDEN	50mm CAL.	B&B
10	SYRINGA RETICULATA 'IVORY SILK'	IVORY SILK TREE LILAC	50mm CAL.	B&B
14	ULMUS AMERICANA	BRANDON ELM	80mm CAL.	B&B

SHRUB PLANTING SCHEDULE

QTY.	BOTANICAL NAME	COMMON NAME	SIZE	CONDITION
CONIFEROUS SHRUBS				
5	JUNIPERUS SABINA 'ARCADIA'	ARCADIA JUNIPER	600mm SPR.	#5 CONT.
27	JUNIPERUS SABINA 'BLUE DANUBE'	BLUE DANUBE JUNIPER	600mm SPR.	#5 CONT.
15	JUNIPERUS HORIZONTALIS 'WILTON'	BLUE RUG JUNIPER	600mm SPR.	#5 CONT.
34	JUNIPERUS SABINA 'CALGARY CARPET'	CALGARY CARPET JUNIPER	600mm SPR.	#5 CONT.
6	JUNIPERUS CHINENSIS 'GOLD COAST'	GOLD COAST JUNIPER	600mm SPR.	#5 CONT.
DECIDUOUS SHRUBS				
12	CARAGANA FRUTEX 'GLOBOSA'	GLOBE CARAGANA	400mm HT.	#2 CONT.
8	CORNUS SERICEA	RED OSIER DOGWOOD	600mm HT.	#2 CONT.
48	COTONEASTER ADPRESSUS	CREeping COTONEASTER	600mm HT.	#2 CONT.
34	POTENTILLA FRUTICOSA 'PINK BEAUTY'	PINK BEAUTY POTENTILLA	400mm HT.	#2 CONT.
58	POTENTILLA FRUTICOSA 'GOLDFINGER'	GOLDFINGER POTENTILLA	400mm HT.	#2 CONT.
20	SALIX PURPUREA 'NANA'	DWARF ARCTIC WILLOW	400mm HT.	#2 CONT.
6	ROSA ACICULARIS	PRICKLY ROSE	600mm HT.	#2 CONT.
28	SORBARIA SORBIFOLIA 'SEM'	SEM FALSE SPIREA	400mm HT.	#2 CONT.
47	SPIRAEA X BUMALDA 'GOLDFLAME'	GOLDFLAME SPIREA	400mm HT.	#2 CONT.
18	SPIRAEA NIPPONICA 'SNOWMOUND'	SNOWMOUND SPIREA	400mm HT.	#2 CONT.
12	SPIRAEA VANHOUTTEI 'RENAISSANCE'	BRIDAL WREATH SPIREA	600mm HT.	#5 CONT.
6	SYRINGA HYACINTHIFOLIA	MAIDEN'S BLUSH LILAC	600mm HT.	#5 CONT.
4	SYRINGA X PRESTONIAE 'MISS CANADA'	MISS CANADA LILAC	600mm HT.	#5 CONT.
6	VIBURNUM TRILOBUM 'COMPACTUM'	COMPACT CRANBERRY	600mm HT.	#2 CONT.

PERENNIALS AND GRASSES

QTY.	BOTANICAL NAME	COMMON NAME	SIZE	CONDITION
40	CARIX AQUATILIS	WATER SEDGE		PLUG
25	PHALARIS ARUNDINACEA	RIBBON GRASS		15cm CONT.
26	MOLINIA CAERULEA 'VARIEGATA'	VARIEGATED MOOR GRASS		15cm CONT.

NOTES:

- PLACE 75mm DEPTH CLEAN ROCK MULCH AND FILTER FABRIC UNDER ALL SHRUB BEDS AND CONIFEROUS TREES
- PLACE 75mm DEPTH OF BARK MULCH UNDER ALL STAND ALONE DECIDUOUS TREE AREAS. PROVIDE TRUNK PROTECTION TO ALL DECIDUOUS TREES ALL DISTURBED AREAS TO BE RESTORED TO ORIGINAL SODDED CONDITION.
- INSTALL SITE CONSTRUCTION FENCE ALONG THE PROPERTY LINE
- ALL STAGING, SUPPLIES AND MATERIALS SHALL BE STORED ON SITE AND NOT ON CITY PROPERTY
- URBAN F SEED MIX SHALL BE USED IN NON MULCHED BIORETENTION AREA (SEE CALGARY PARKS 2019, DEVELOPMENT GUIDELINES AND STANDARD SPECIFICATIONS, page 97)

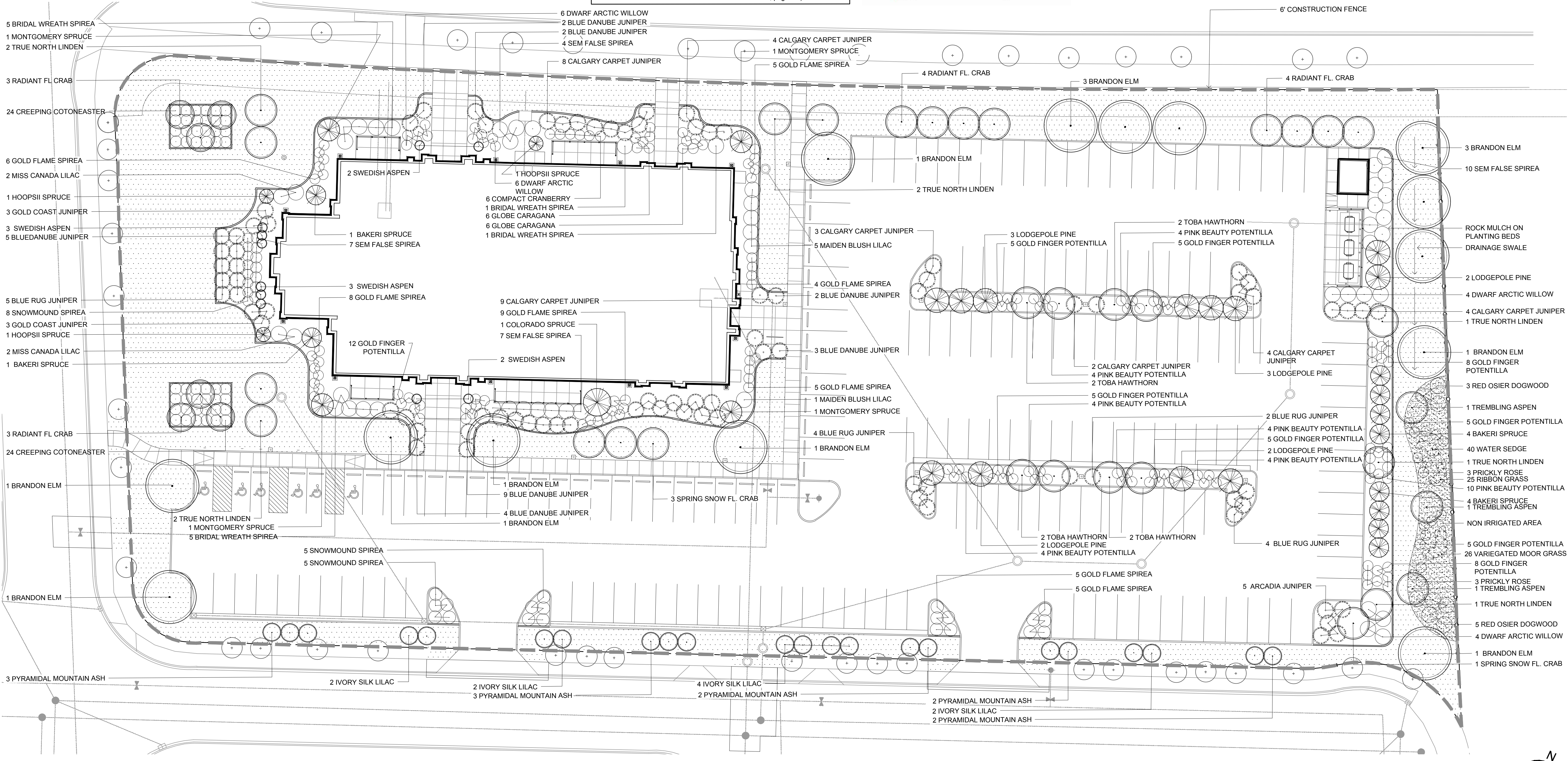
URBAN F SEED MIX

Urban F is a grass seed mix that is similar to Urban A, Urban B, and Urban C, in that it contains species that provide quick growth, perform well under infrequent and frequent mowing regimes, and can be seeded at any time during the growing season. The other species in this mix allow it to do better in the long term than the other mixes, though, as it will remain greener during drought, is very tolerant of high usage, has additional soil binding qualities, and can withstand some salinity.

Urban F is composed of:

Kentucky Blue Grass (turf quality 98/85)	10%
Creeping Red Fescue	12%
Annual Perennial Rye Grass	15%
Idaho (Bunch) Fescue	12%
Sheep's Fescue	18%
Rocky Mountain Fescue	18%
Tufted Hair Grass	10%
June Grass	5%

URBAN F GRASS MIXTURE IS TO BE APPLIED AT A RATE OF NOT LESS THAN 13g/m² OR 130 kg/ha



1 NEW LANDSCAPE PLAN
L 102 1:250

MARK	DATE	REVISION
1	2019-10-04	ISSUED FOR DP
2	2019-12-20	ISSUED FOR PTD
3	2020-01-31	ISSUED FOR CONSTRUCTION

ARCHITECT

GDG
Architectural Group

1919 10th Avenue S.W.
Calgary, Alberta, T3C 0K3
(403) 229-3233

CONSULTANTS

STRUCTURAL
ROCKY MOUNTAIN ENGINEERING INC.
1919 10th Avenue S.W.
Calgary, Alberta T3C 0K3
(403) 274-0227

MECHANICAL
AME Group Consulting Mechanical Engineers
710 - 1122 4th Street S.W.
Calgary, Alberta T2R 1M1
(403) 252-2333

ELECTRICAL
Maskell Planzik & Partners Engineering Inc.
206, 610-70th Avenue S.E.
Calgary, Alberta T2H 2J6
(403) 509-2005

NATIONAL ENERGY CODE
908 Engineering Incorporated
P.O. Box 20020
Red Deer, Alberta T4N 6X5
(403) 986-2939

AUDIO / VIDEO
SLR Consulting (Canada) Limited
1185, 10201 Southport Road S.W.
Calgary, Alberta T2W 4X9
(403) 266-2030

LANDSCAPE
IBI Group
3rd Floor - 227 11th Avenue S.W.
Calgary, Alberta T2R 1R9
(403) 270-5600

CIVIL
ELJ Consulting Inc.
230 Edgemoor Circle N.W.
Calgary, Alberta T3A 5A2
(403) 607-0049

GDG NUMBER 16123

STAMP

The Alberta Association of Landscape Architects
Nataliya Imshenetska

PROJECT FOR
THE CHURCH OF JESUS CHRIST OF LATTER-DAY SAINTS

PROJECT NAME
SETON GRANGER 250
CALGARY ALBERTA
BOW RIVER STAKE

PROJECT ADDRESS
530 SETON PASSAGE S.E.
CALGARY, ALBERTA

SHEET TITLE
LANDSCAPE PLAN

PROJECT DESIGNATION
500-7688-1901-0101

WO NUMBER
GML 1068

PROPERTY NUMBER
500-7688

DEVELOPMENT NUMBER
G25-MH-17-05

DATE
FEB 2020

SHEET NO.
L102

16123) SETON GRANGER 250

IRRIGATION SCHEDULE • PEAK LANDSCAPE ET(L) = 1.281"/WEEK

ZONE	HEAD TYPE	PSI	FLOW (gpm)	PRECIP. RATE (in/hr)	DAYS OF THE WEEK	NO. OF CYCLES	CYCLE TIME (mins)	SOAK TIME (mins)
1	DRIP	40	7.02	0.32	M, W, F	2	46	30
2	DRIP	40	5.73	0.32	M, W, F	2	46	30
3	MP ROTATOR	40	11.13	0.39	M, W, F	2	38	30
4	MP ROTATOR	40	23.95	0.39	M, W, F	2	38	30
5	DRIP	40	11.20	0.32	T, Th, Sat	2	46	30
6	DRIP	40	6.74	0.32	T, Th, Sat	2	46	30
7	MP ROTATOR	40	10.58	0.39	T, Th, Sat	2	38	30
8	MP ROTATOR	40	23.63	0.39	M, W, F	2	38	30
9	MP ROTATOR	40	26.90	0.39	T, Th, Sat	2	38	30
10	DRIP	40	5.84	0.32	T, Th, Sat	2	46	30
11	MP ROTATOR	40	14.36	0.39	T, Th, Sat	2	38	30

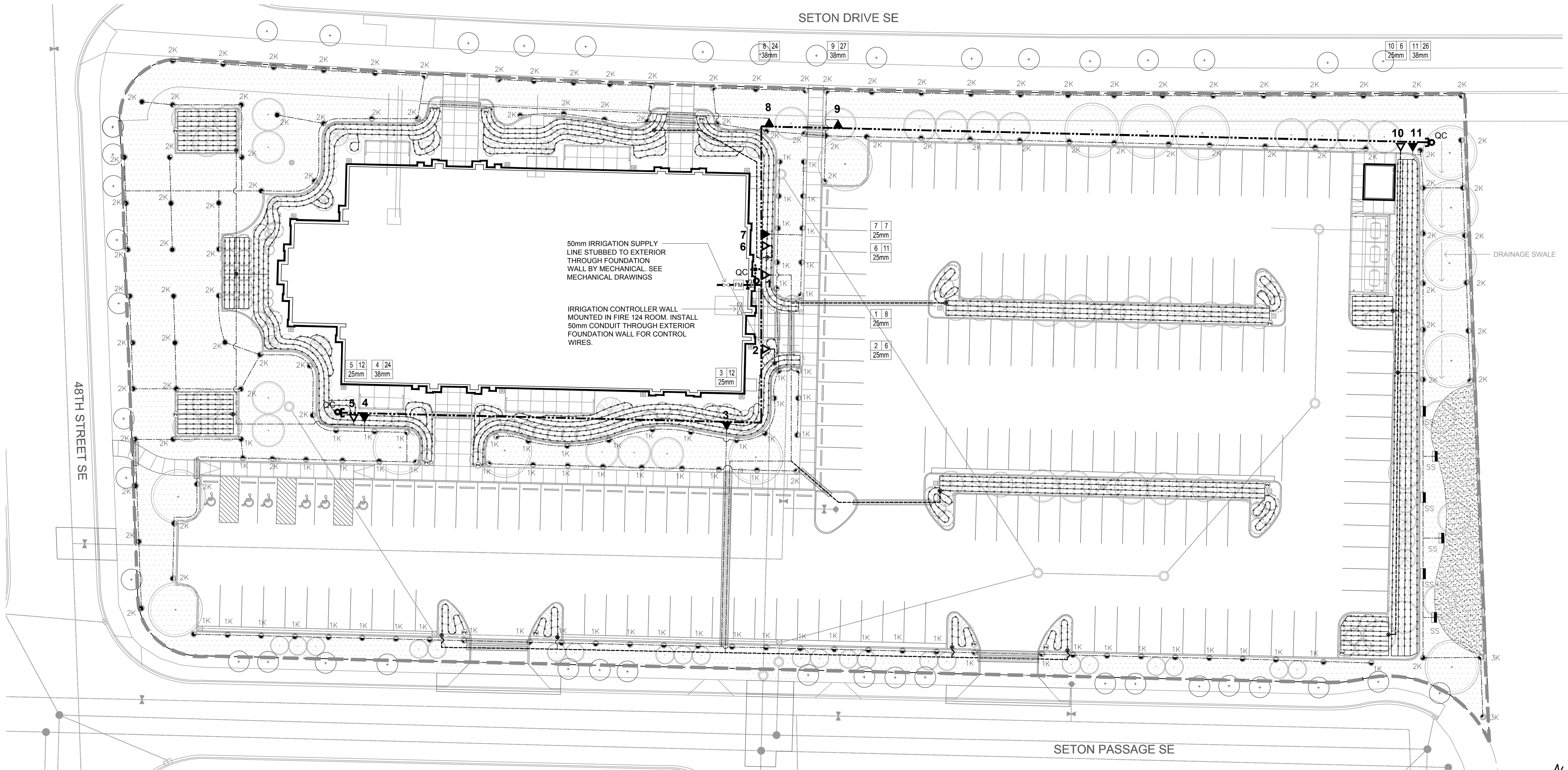
IRRIGATION LEGEND

SYMBOL	DESCRIPTION	QTY.	SYMBOL	DESCRIPTION	QTY.
▲	ELECTRIC ZONE VALVE IN LOCKABLE VALVE BOX - HUNTER ICV-G-FS (SEE SCHEDULE FOR SIZE)	6	---	50mm HDPE PE4710 DR 17 MAIN LINE C/W FUSED FITTINGS AND DRAIN PITS (AS REQUIRED)	175 L.m.
△	25mm PLASTIC CONTROL VALVE WITH PRESSURE REGULATION AND FILTRATION (140 MESH SCREEN) IN LOCKABLE VALVE BOX - NETAFIM LVCZ10075-FHFH	5	---	25mm LOW DENSITY 100 PSI POLY LATERAL LINE C/W SS CLAMP FITTINGS AND TRACE WIRE	220 L.m.
●	90°-210° HUNTER MP ROTATOR ON PRO SPRAY PRS40 SPRAY BODY, NOZZLE SIZE AS NOTED ON DRAWING (1K=MP1000, 2K=MP2000, 3K=MP3000)	1K = 70 2K = 67 3K = 2	---	38mm LOW DENSITY 100 PSI POLY LATERAL LINE C/W SS CLAMP FITTINGS AND TRACE WIRE	1150 L.m.
●	210°-270° HUNTER MP ROTATOR ON PRO SPRAY PRS40 SPRAY BODY, NOZZLE SIZE AS NOTED ON DRAWING (1K=MP1000, 2K=MP2000, 3K=MP3000)	1K = 1 2K = 23	---	17mm DRIP LINE W/ 0.6gph EMITTERS SPACED AT 457mm (18"). LATERALS SPACED APPROX. 600mm (24") APART WITH TRIANGULAR EMITTER SPACING. - NETAFIM TLCV-06-18	1910 L.m.
●	360° HUNTER MP ROTATOR ON PRO SPRAY PRS40 SPRAY BODY, NOZZLE SIZE AS NOTED ON DRAWING (1K=MP1000, 2K=MP2000, 3K=MP3000)	2K = 8	---	17mm BLANK POLYETHYLENE TUBING	As required
SS	SIDE STRIP HUNTER MP ROTATOR ON PRO SPRAY PRS40 SPRAY BODY, NOZZLE SIZE AS NOTED ON DRAWING (SS=MPSS530)	SS = 6	●	DRIPLINE CONNECTION TO LATERAL PIPE	As required
□	IRRIGATION CONTROLLER MOUNTED IN CABINET IN FIRE 124 ROOM AS APPROVED BY OWNER. - HUNTER PRO-HC12	1	⊕	DRIP LINE FLUSH VALVE (AS REQUIRED)	As required
⊕	HUNTER WIRELESS SOLARY SYNC/RAIN/FREEZE SENSOR MOUNTED AS PER MANUFACTURER'S SPECIFICATIONS. LOCATION TO BE APPROVED BY OWNER.	1	▨	SCHEDULE 40 PVC SLEEVE (SEE NOTE)	As required
FM	HUNTER HC-200 FLOW METER AND 50mm MASTER VALVE	1			
●QC	20mm QUICK COUPLER W/ 2-PIECE BODY	3			

NOTES:

- THIS SYSTEM IS BASED UPON AN AVAILABLE STATIC PRESSURE OF 50 PSI MINIMUM AND 60 G.P.M. PRIOR TO CONSTRUCTION, CONFIRM STATIC PRESSURE AND SIZE OF IRRIGATION SUPPLY LINE.
- LOCATE ALL EXISTING AND NEW UTILITIES ON SITE PRIOR TO CONSTRUCTION. COORDINATE ALL EXCAVATION WORK WITH GENERAL CONTRACTOR.
- THIS PLAN IS DIAGRAMMATIC. SYSTEM COMPONENTS MAY BE SHOWN IN PAVED AREAS OR BUILDINGS FOR PLAN CLARITY.
- PLACE VALVES IN SHRUB BEDS WHERE POSSIBLE. LOCATE ALL VALVES NO MORE THAN 300mm FROM CURB OR SIDEWALK FOR EASY ACCESS AND MAINTENANCE.
- LOCATE SLEEVES UNDER ALL PAVED AND CONCRETE SURFACES WHERE LINES CROSS. SLEEVE SHALL BE SCHEDULE 40 PVC, 2 SIZES LARGER THAN THE LINE. EXTEND 305mm BEYOND SURFACE ON EACH SIDE. INSTALL ONE EXTRA SLEEVE OF SAME SIZE FOR EVERY SLEEVE INSTALLED. SEE DETAIL 7L105.
- REFER TO DETAIL SHEET AND SPECIFICATIONS FOR ADDITIONAL INFORMATION.
- FLEXIBLE DRIP TUBING TO BE STAKED AT ALL CHANGES IN DIRECTION AND AT 1.5m ON CENTRE FOR STRAIGHT RUNS.
- IRRIGATION ZONES ARE IDENTIFIED WITH THE FOLLOWING SYMBOL:

ZONE NUMBER	2	3	7	GPM
	25	25	25	VALVE SIZE
- VALVE BOX LIDS LOCATED IN TURF AREAS SHALL BE GREEN COLOR. VALVE BOX LIDS LOCATED IN SHRUB AREAS SHALL BE TAN COLOR.
- SEE SPECIFICATIONS FOR SMART CONTROLLER CHECKLIST REQUIREMENTS PRIOR TO INSPECTIONS.
- AFTER COMPLETION, ENSURE NO HEADS SPRAY ON BUILDING, ROADWAY OR SIDEWALKS.



MARK	DATE	REVISION
1	2019-10-04	ISSUED FOR DP
2	2019-12-20	ISSUED FOR PTD
3	2020-01-31	ISSUED FOR CONSTRUCTION

ARCHITECT

GDG
Architectural Group

1919 10th Avenue S.W.
Calgary, Alberta, T3C 0K3
(403) 229 3233

CONSULTANTS

STRUCTURAL
ROCKY MOUNTAIN ENGINEERING INC.
1919 10th Avenue S.W.
Calgary, Alberta T3C 0K3
(403) 274-0227

MECHANICAL
AME Group Consulting Mechanical Engineers
710 - 1122 4th Street S.W.
Calgary, Alberta T2R 1M1
(403) 252-2333

ELECTRICAL
Maskell Plenzik & Partners Engineering Inc.
208, 610-70th Avenue S.E.
Calgary, Alberta T2H 2J6
(403) 509-2005

NATIONAL ENERGY CODE
90B Engineering Incorporated
P.O. Box 20020
Red Deer, Alberta T4N 6X5
(403) 986-2939

AUDIO / VIDEO
SLR Consulting (Canada) Limited
1185, 10201 Southport Road S.W.
Calgary, Alberta T2W 4X9
(403) 266-2030

LANDSCAPE
ISI Group
3rd Floor - 227 11th Avenue S.W.
Calgary, Alberta T2R 1R9
(403) 270-8600

CIVIL
ELJ Consulting Inc.
230 Edgebrook Circle N.W.
Calgary, Alberta T3A 5A2
(403) 607-0049

GDG NUMBER 16123

STAMP

STAMP

The Alberta Association of Landscape Architects
affiliates
Nataliya Imshenetska

PROJECT FOR
THE CHURCH OF JESUS CHRIST OF LATTER-DAY SAINTS

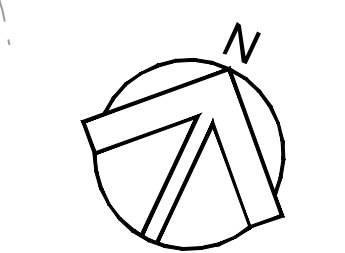
PROJECT NAME
SETON GRANGER 250
CALGARY ALBERTA
BOW RIVER STAKE

PROJECT ADDRESS
530 SETON PASSAGE S.E.
CALGARY, ALBERTA

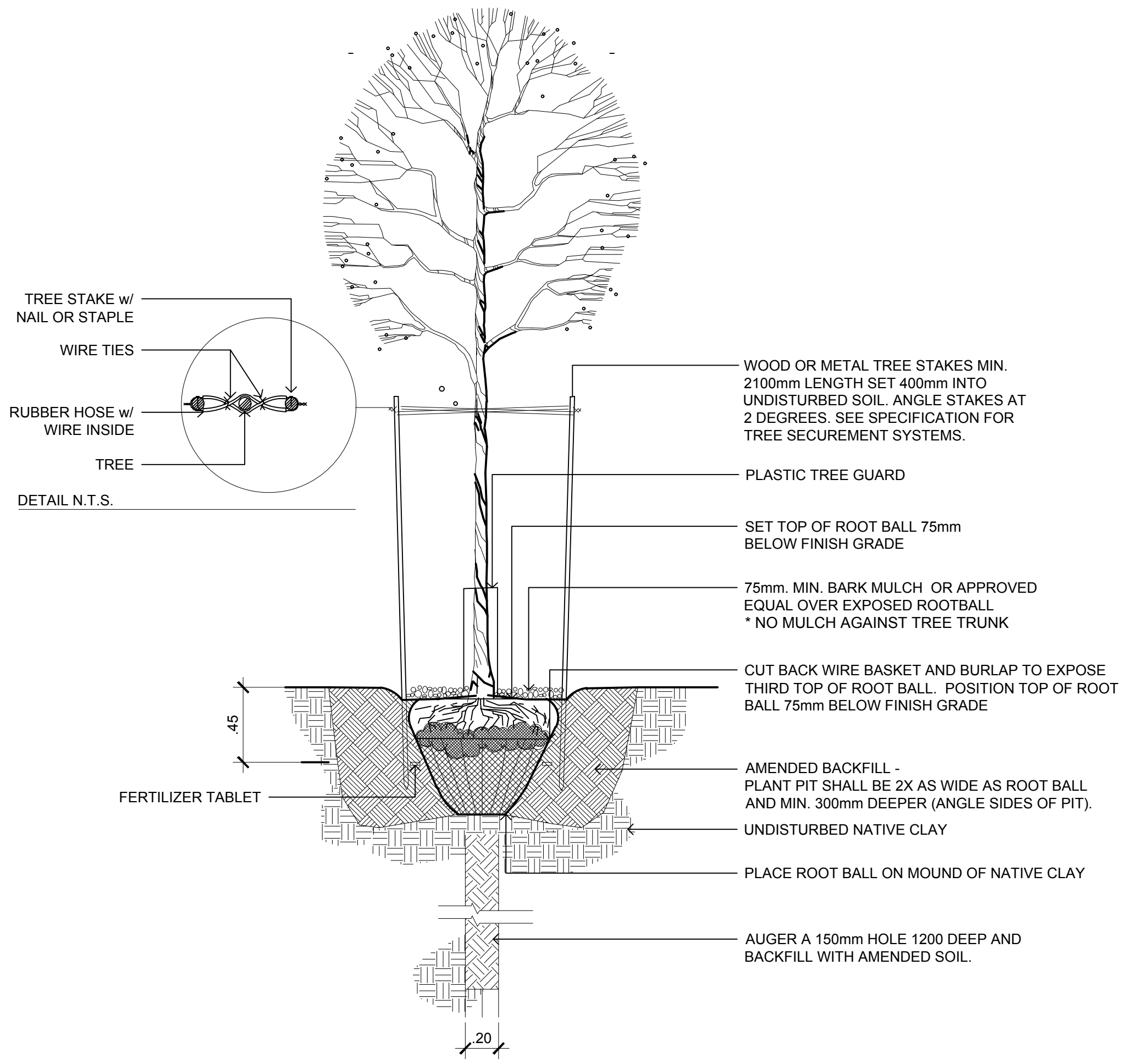
SHEET TITLE
IRRIGATION PLAN

PROJECT DESIGNATION
500-7688-1901-0101

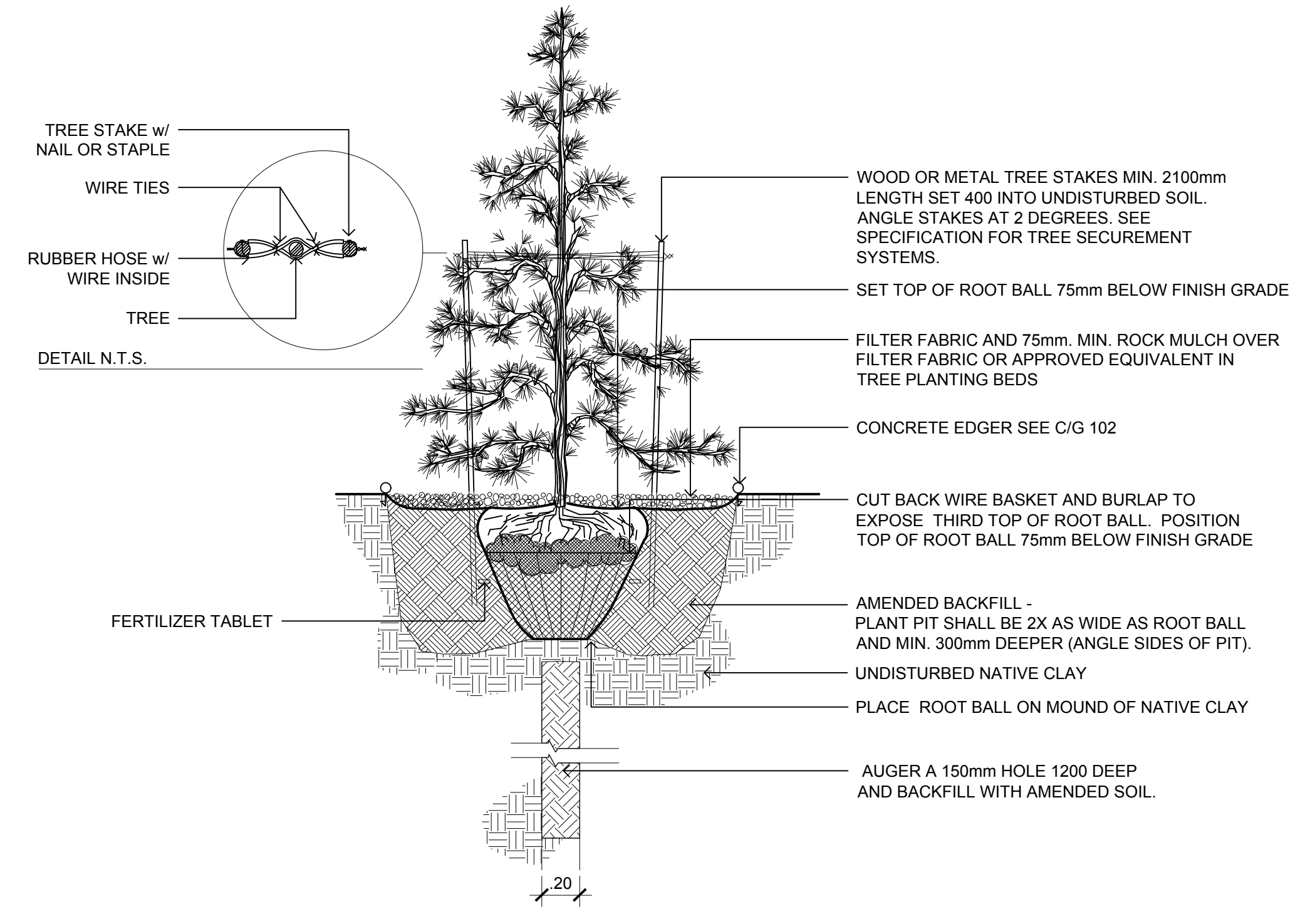
WO NUMBER GML 1068	SHEET NO.
PROPERTY NUMBER 500-7688	L103
DEVELOPMENT NUMBER G25-MH-17-05	
DATE FEB 2020	



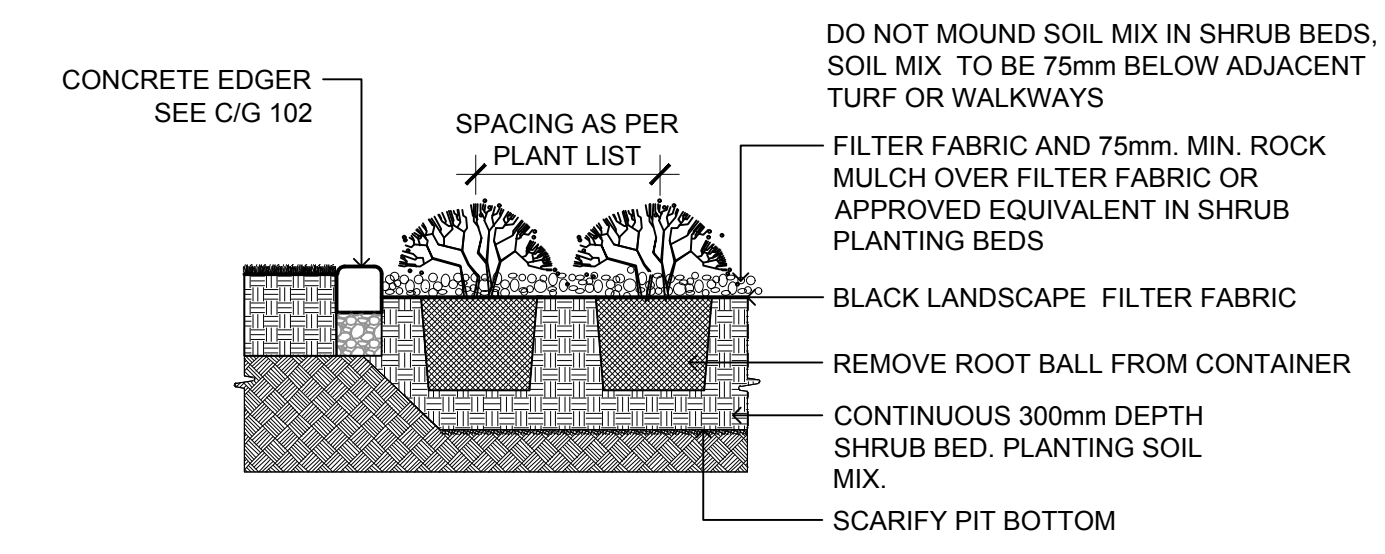
16123 SETON GRANGER 250



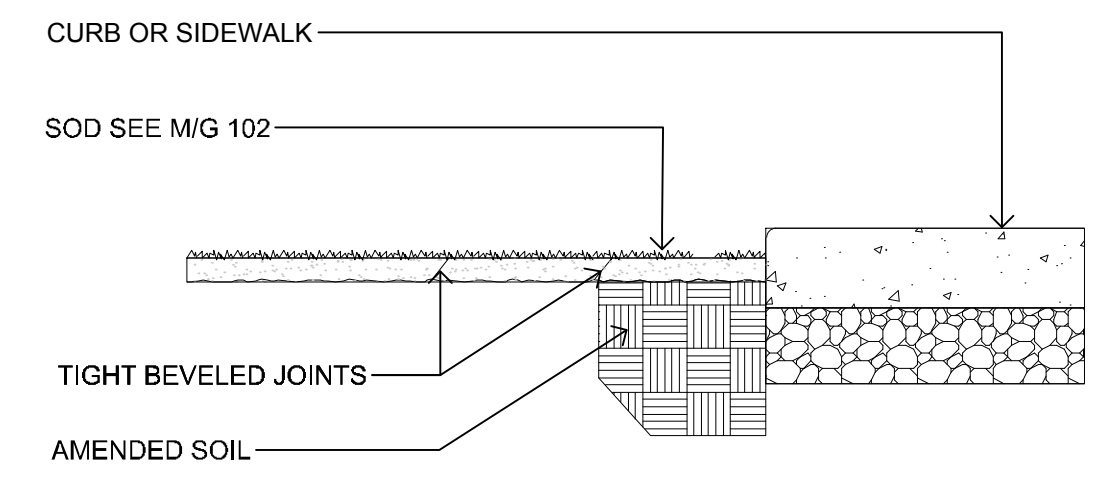
1 DECIDUOUS TREE PLANTING
L104 1:25



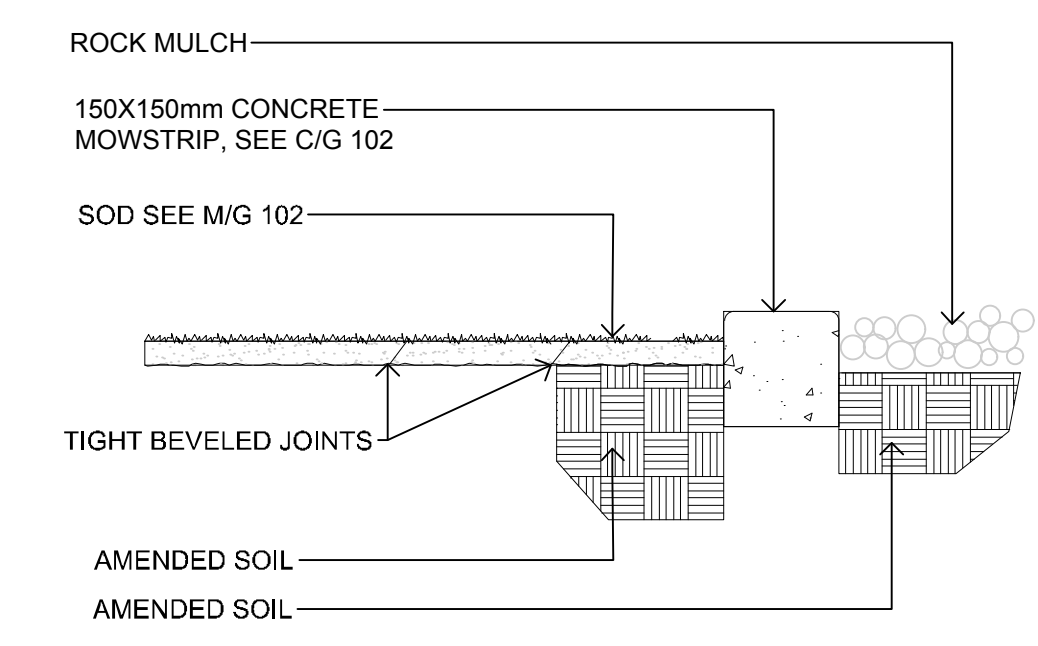
2 CONIFEROUS TREE PLANTING
L104 1:25



3 SHRUB PLANTING
L104 1:25



4 SOD INSTALLATION
L104 1:10



5 CONCRETE MOW STRIP
L104 1:10

MARK	DATE	REVISION
1	2019-10-04	ISSUED FOR DP
2	2019-12-20	ISSUED FOR PTD
3	2020-01-31	ISSUED FOR CONSTRUCTION

ARCHITECT

GDG
Architectural Group

1919 10th Avenue S.W.
Calgary, Alberta,
T3C 0K3
(403) 229-3233

CONSULTANTS

STRUCTURAL
ROCKY MOUNTAIN ENGINEERING INC.
1919 10th Avenue S.W.
Calgary, Alberta T3C 0K3
(403) 274-0227

MECHANICAL
AME Group Consulting Mechanical Engineers
710 - 1122 4th Street S.W.
Calgary, Alberta T2R 1M1
(403) 252-2333

ELECTRICAL
Maskell Plenzik & Partners Engineering Inc.
208, 610-70th Avenue S.E.
Calgary, Alberta T2H 2J6
(403) 509-2005

NATIONAL ENERGY CODE
908 Engineering Incorporated
P.O. Box 20020
Red Deer, Alberta T4N 6X5
(403) 986-2939

AUDIO / VIDEO
SLR Consulting (Canada) Limited
1185, 10201 Southport Road S.W.
Calgary, Alberta T2W 4X9
(403) 266-2030

LANDSCAPE
IBI Group
3rd Floor - 227 11th Avenue S.W.
Calgary, Alberta T2R 1R9
(403) 270-5600

CIVIL
ELJ Consulting Inc.
230 Edgebrook Circle N.W.
Calgary, Alberta T3A 5A2
(403) 607-0049

GDG NUMBER 16123

STAMP

STAMP

The Alberta Association of Landscape Architects
Nataliya Imshenetska
Nataliya Imshenetska

PROJECT FOR
THE CHURCH OF JESUS CHRIST OF LATTER-DAY SAINTS

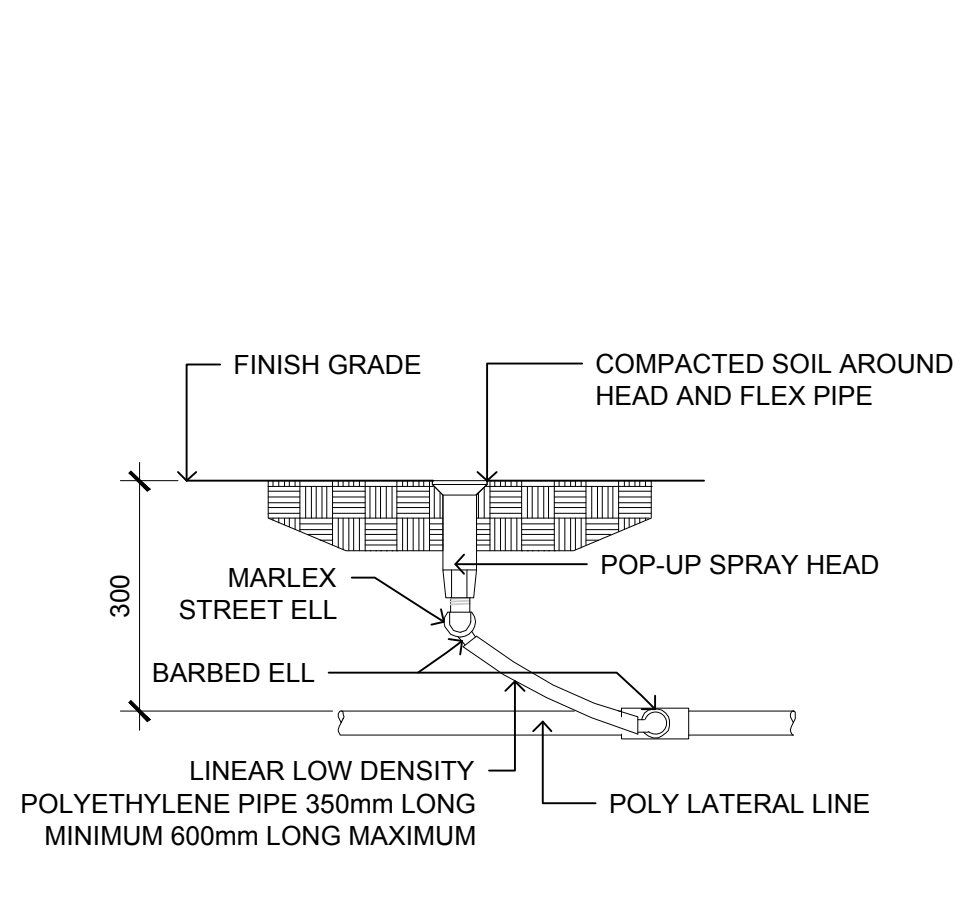
PROJECT NAME
SETON GRANGER 250
CALGARY ALBERTA
BOW RIVER STAKE

PROJECT ADDRESS
530 SETON PASSAGE S.E.
CALGARY, ALBERTA

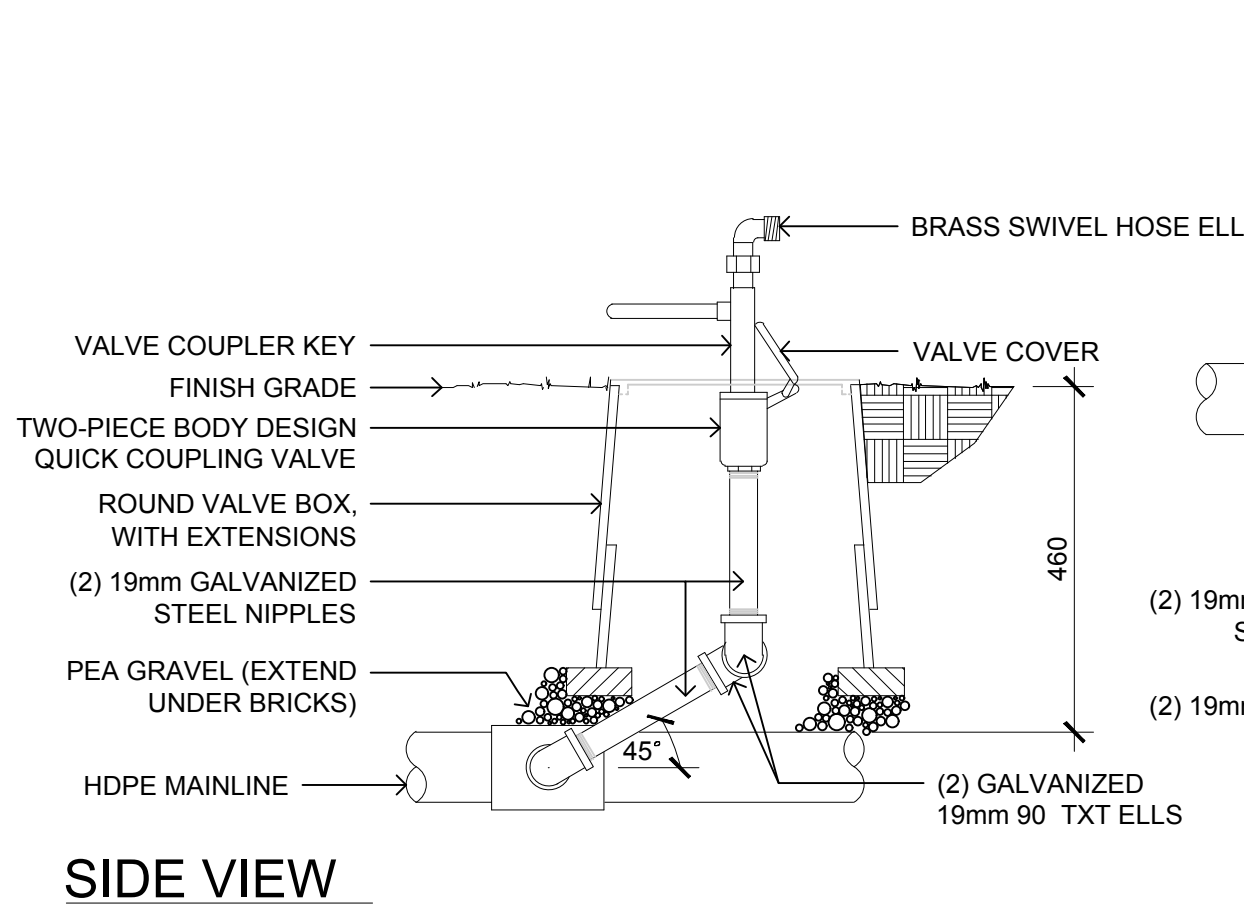
SHEET TITLE
LANDSCAPE DETAILS

PROJECT DESIGNATION
500-7688-1901-0101

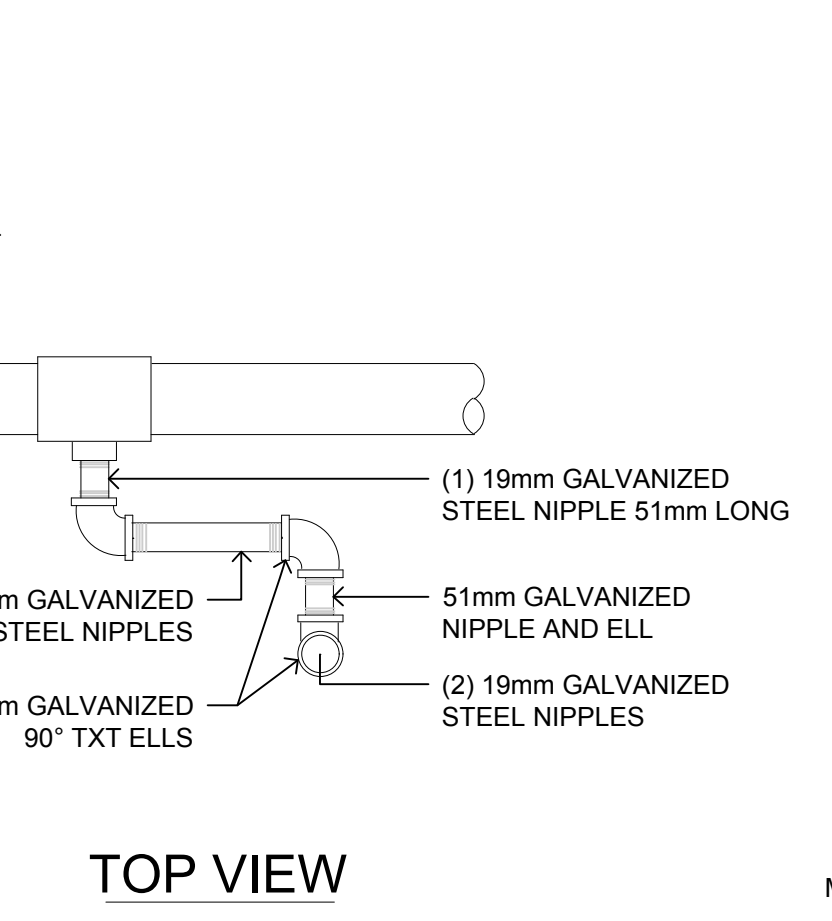
WO NUMBER GML 1068	SHEET NO. L104
PROPERTY NUMBER 500-7688	
DEVELOPMENT NUMBER G25-MH-17-05	
DATE FEB 2020	



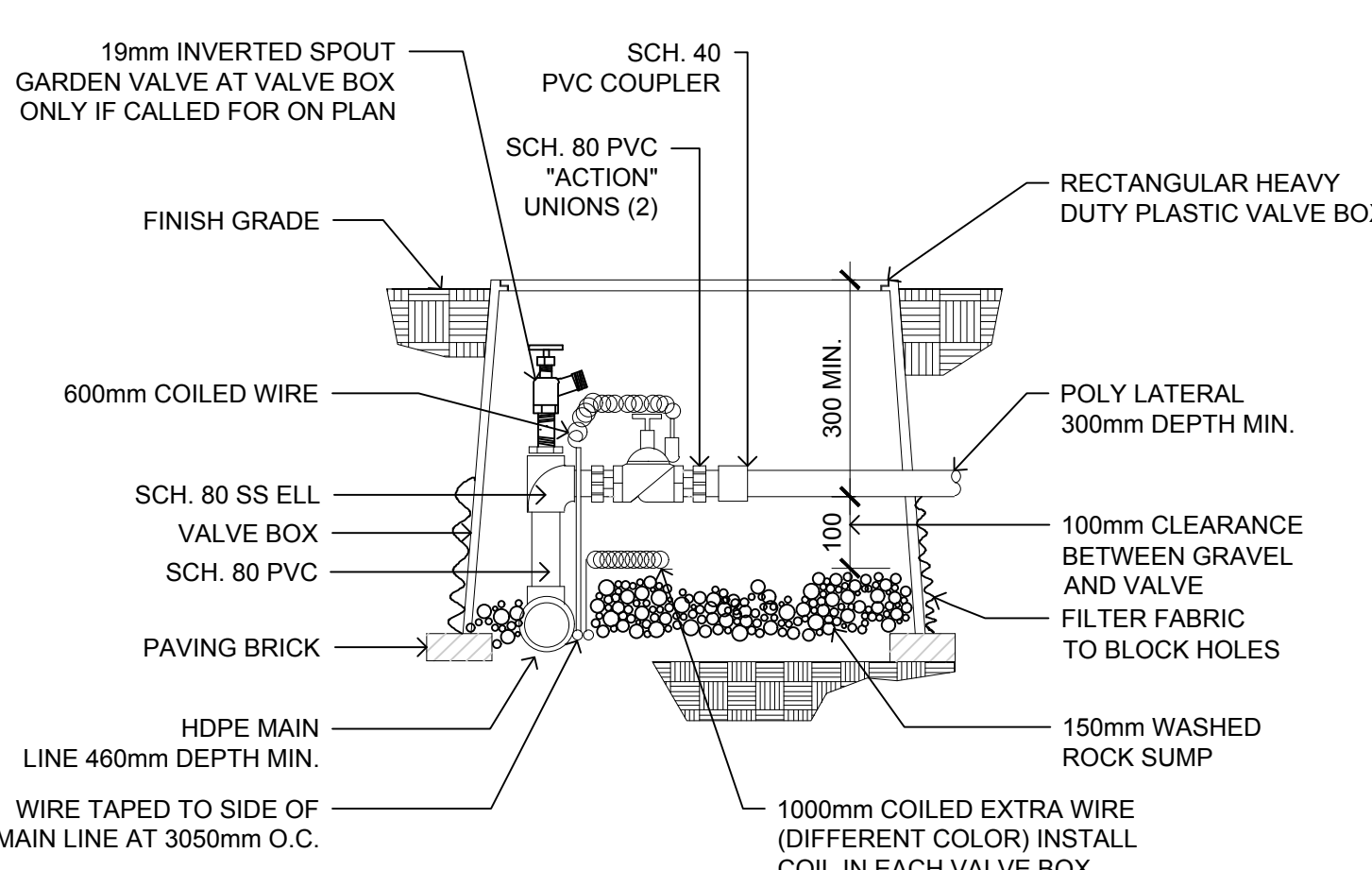
1 SPRAY HEAD ASSEMBLY
L105 SCALE 1:10



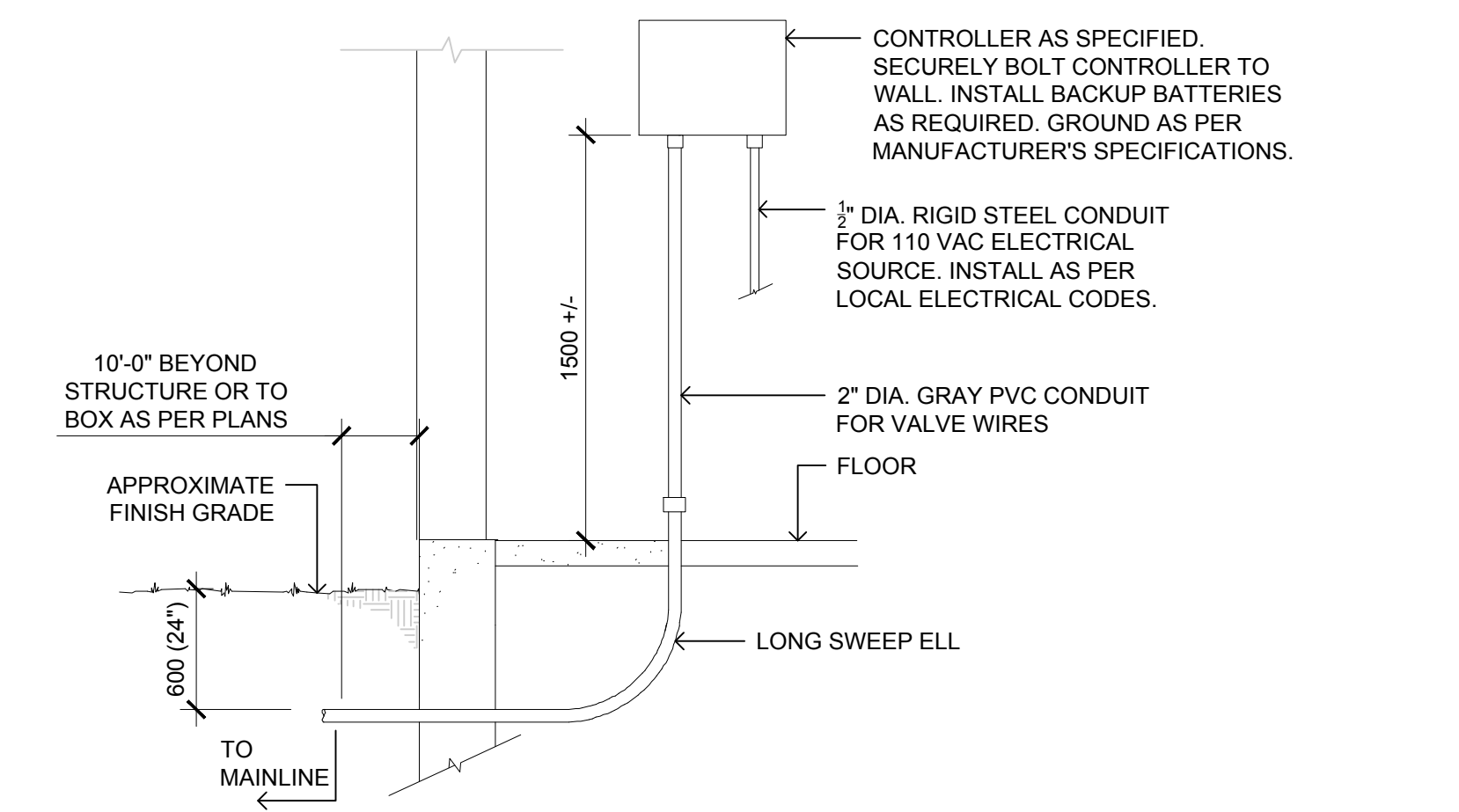
2 QUICK COUPLING VALVE
L105 SCALE 1:10



3 AUTOMATIC VALVE
L105 SCALE 1:10

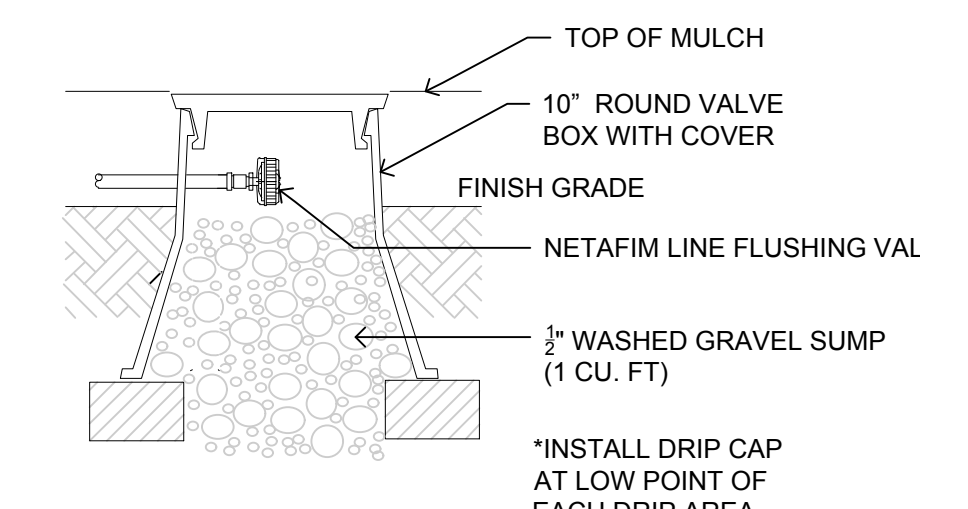


4 DRIP VALVE ASSEMBLY
L105 NTS

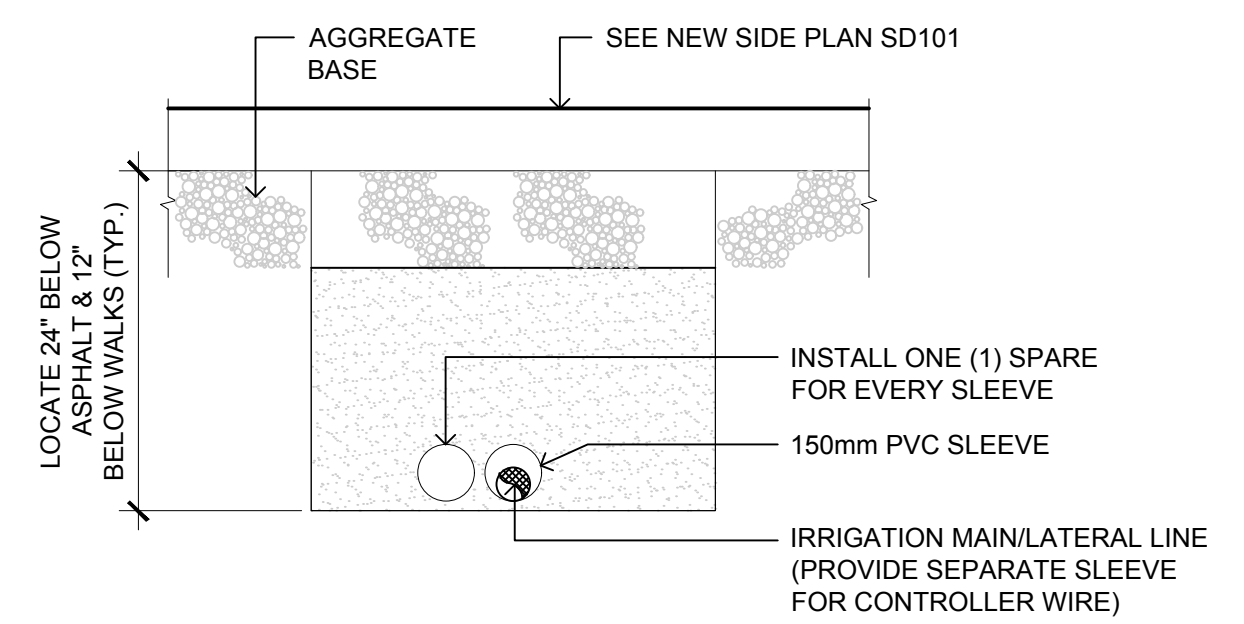


NOTE:
1. COORDINATE WITH ELECTRICAL & PLUMBING. PROVIDE GROUNDING, HYDROMETER CONNECTION AND DATA CONNECTION AS REQUIRED.
2. CONTROLLER SHALL BE LOCATED IN FIRE SPRINKLER / METER ROOM FIRE 124 BUILDING.

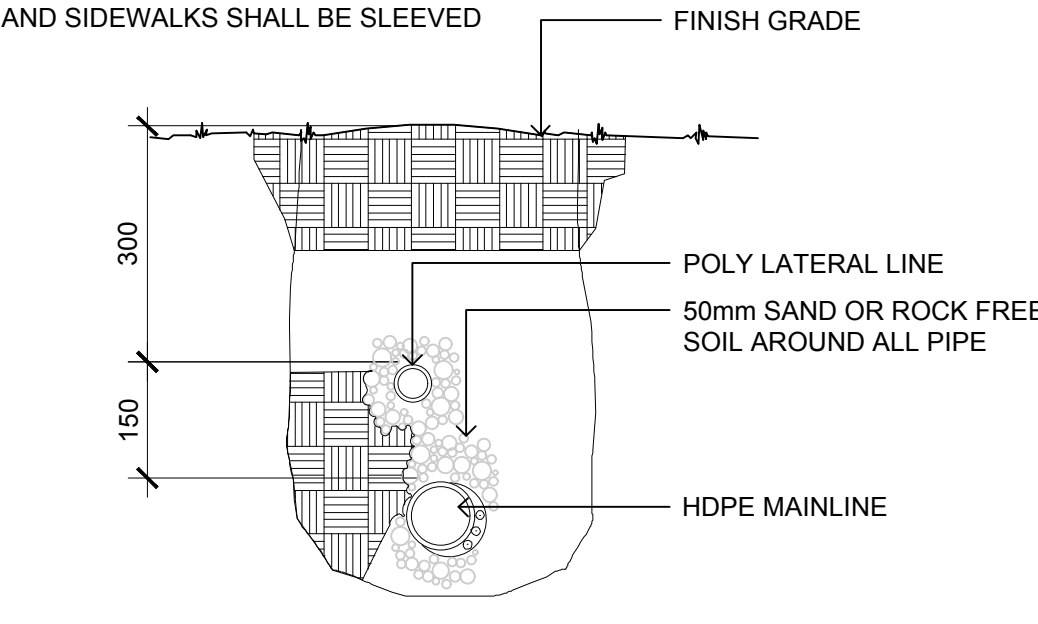
5 IRRIGATION CONTROLLER (INTERIOR MOUNT)
L105 SCALE 1:25



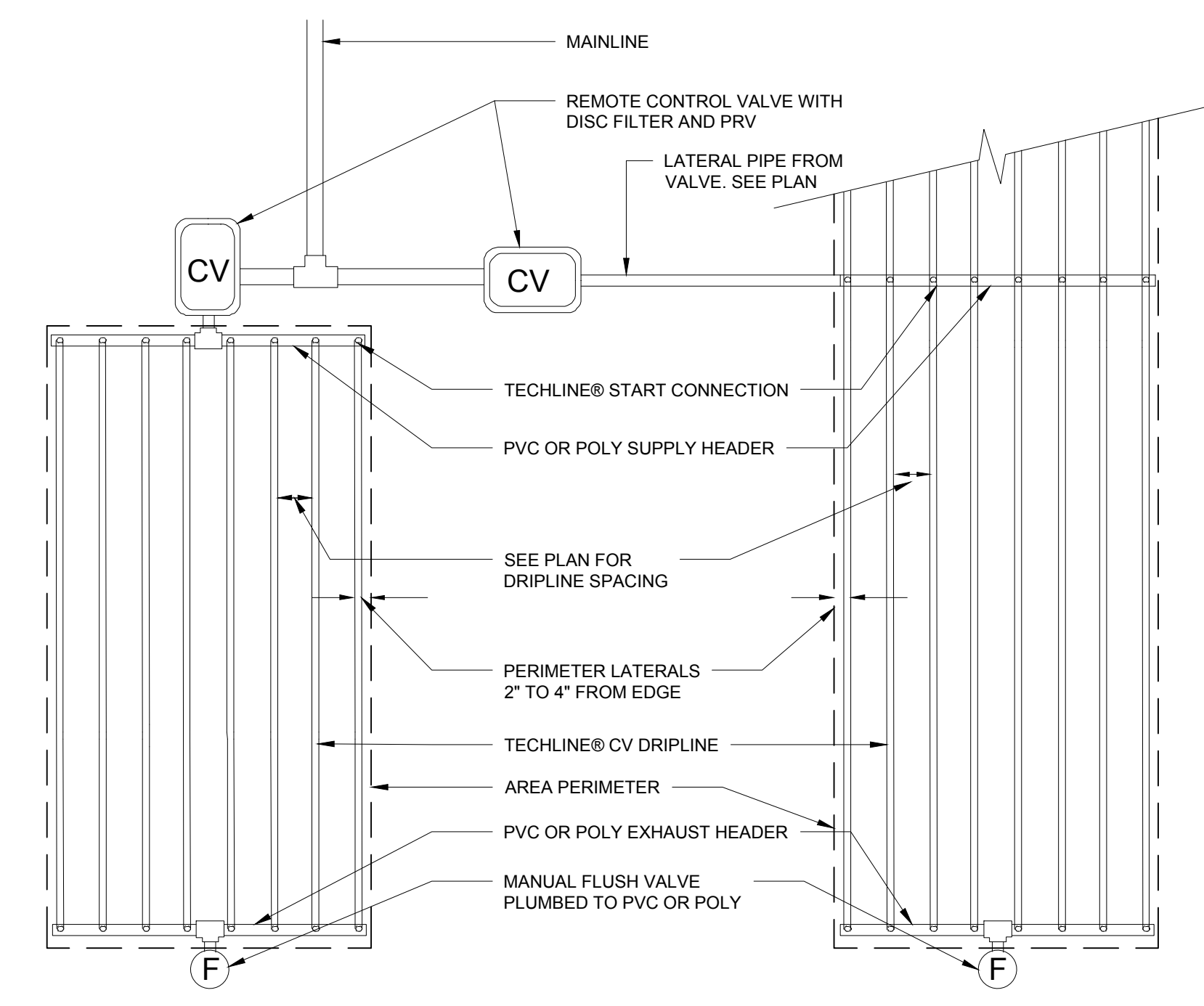
6 DRIPLINE FLUSH CAP
L105 NTS



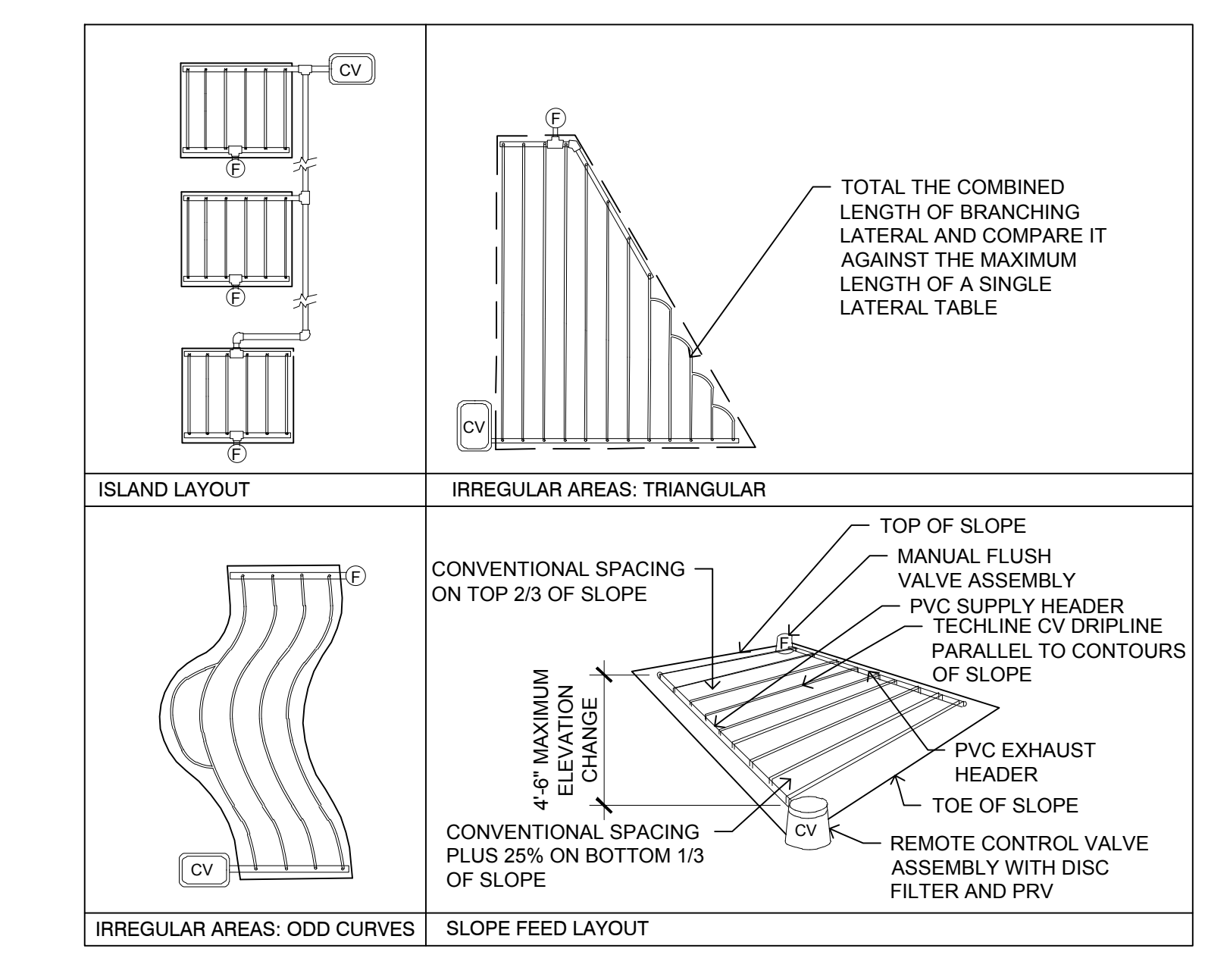
7 SLEEVE SECTION
L105 SCALE 1:10



8 TRENCH SECTION
L105 SCALE 1:10



9 TYPICAL NETAFIM TECHLINE CV DETILS
L105 NTS



FLOW PER 100 FEET

EMITTER SPACING	0.26 EMITTER		0.4 EMITTER		0.6 EMITTER		0.9 EMITTER	
	GPH	GPM	GPH	GPM	GPH	GPM	GPH	GPM
12"	26.4	0.44	42.3	0.71	60.8	1.01	92.5	1.54
18"	17.6	0.29	28.2	0.47	40.5	0.68	61.6	1.03
24"	-	-	-	-	30.4	0.51	46.2	0.77

MAXIMUM LENGTH OF A SINGLE LATERAL (FEET)

EMITTER SPACING	12"			18"			24"			
	EMITTER FLOW (GPH)	0.26	0.4	0.6	0.9	0.26	0.4	0.6	0.9	0.6
20 psi	331	242	190	144	468	344	270	204	342	260
25 psi	413	302	238	180	584	429	338	257	430	326
35 psi	518	380	299	227	737	540	426	323	542	412
45 psi	594	436	343	260	845	620	489	371	622	472
55 psi	655	480	378	287	932	684	539	410	686	522
60 psi	681	500	393	298	969	713	561	426	716	544

MARK	DATE	REVISION
1	2019-10-04	ISSUED FOR DP
2	2019-12-20	ISSUED FOR PTD
3	2020-01-31	ISSUED FOR CONSTRUCTION

ARCHITECT

GDG
Architectural Group

1919 10th Avenue S.W.
Calgary, Alberta,
T3C 0K3
(403) 229-3233

CONSULTANTS

STRUCTURAL
ROCKY MOUNTAIN ENGINEERING INC.
1919 10th Avenue S.W.
Calgary, Alberta T3C 0K3
(403) 274-0227

MECHANICAL
AME Group Consulting Mechanical Engineers
710 - 1122 4th Street S.W.
Calgary, Alberta T2R 1M1
(403) 252-2333

ELECTRICAL
Maskell Plenzik & Partners Engineering Inc.
208, 610-70th Avenue S.E.
Calgary, Alberta T2H 2J6
(403) 509-2005

NATIONAL ENERGY CODE
908 Engineering Incorporated
P.O. Box 20020
Red Deer, Alberta T4N 6X5
(403) 986-2939

AUDIO / VIDEO
SLR Consulting (Canada) Limited
1185, 10201 Southport Road S.W.
Calgary, Alberta T2W 4X9
(403) 266-2030

LANDSCAPE
ISI Group
3rd Floor - 227 11th Avenue S.W.
Calgary, Alberta T2R 1R9
(403) 270-8600

CIVIL
ELJ Consulting Inc.
230 Edgemoor Circle N.W.
Calgary, Alberta T3A 5A2
(403) 607-0049

GDG NUMBER 16123

STAMP

STAMP

The Alberta Association of Landscape Architects
Nataliya Imshenetska
Nataliya Imshenetska

PROJECT FOR
THE CHURCH OF
JESUS CHRIST
OF LATTER-DAY SAINTS

PROJECT NAME
SETON
GRANGER 250
CALGARY ALBERTA
BOW RIVER STAKE

PROJECT ADDRESS
530 SETON PASSAGE S.E.
CALGARY, ALBERTA

SHEET TITLE
IRRIGATION
DETAILS

PROJECT DESIGNATION
500-7688-1901-0101

WO NUMBER GML 1068	SHEET NO. L105
PROPERTY NUMBER 500-7688	
DEVELOPMENT NUMBER G25-MH-17-05	
DATE FEB 2020	

16123 SETON GRANGER 250