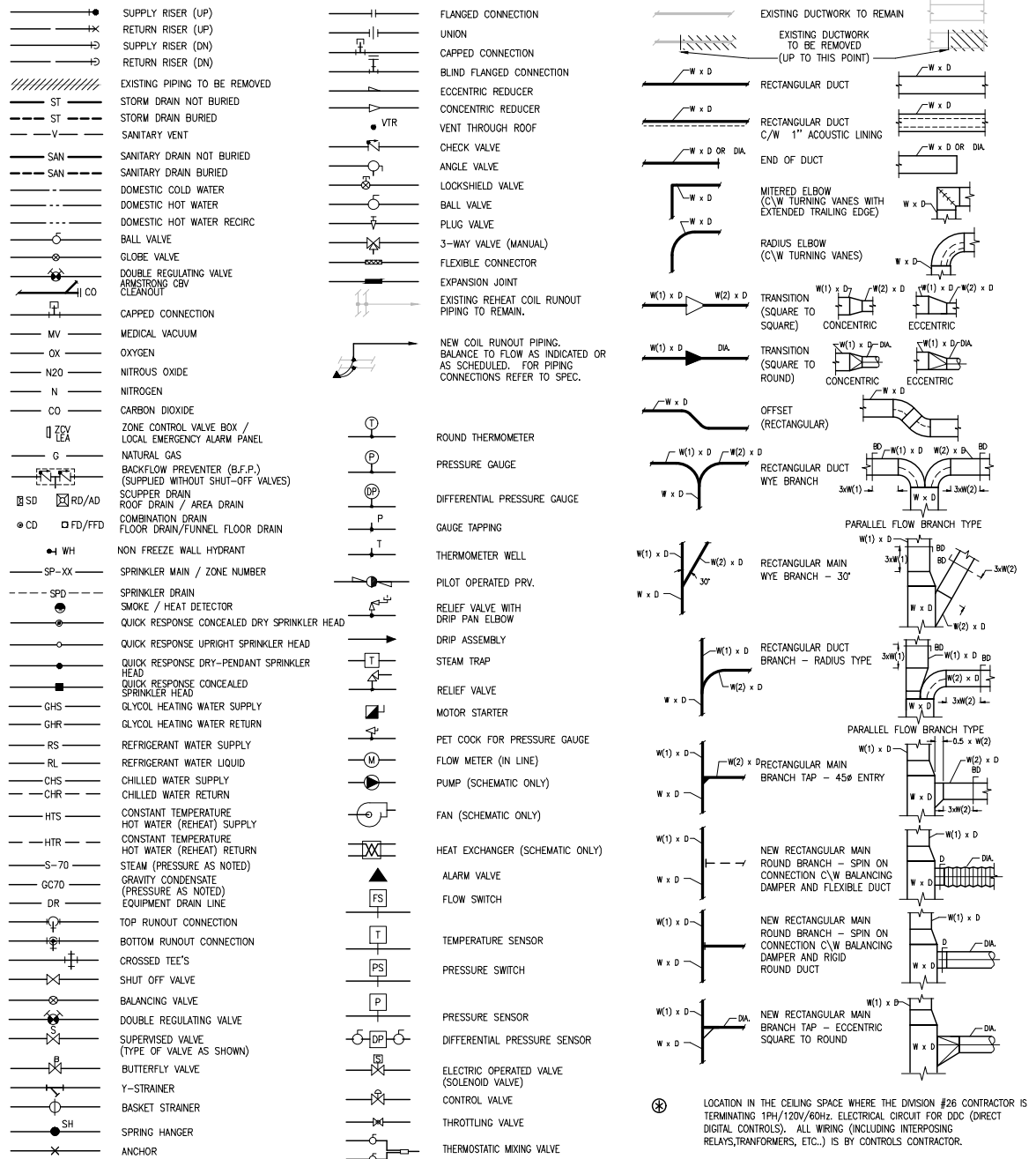


MECHANICAL LEGEND



GENERAL NOTES:

- MECHANICAL SERVICES SHOWN SCREENED (LIGHT LINEWEIGHT) ARE EXISTING TO REMAIN.
- BALANCING DAMPERS ARE REQUIRED AT ALL DUCTWORK BRANCH CONNECTIONS. BALANCING DAMPERS SHOWN INDICATE PREFERRED LOCATIONS ONLY. INDICATE LOCATION OF THESE DAMPERS AND ALL BRANCH DUCT BALANCING DAMPERS NOT SHOWN ON THIS DRAWING, ON 1:50 SCALE DUCTWORK INSTALLATION DRAWINGS. INSTALLATION DRAWINGS TO BE SUBMITTED AND APPROVED BY ENGINEER PRIOR TO COMMENCEMENT OF CONSTRUCTION.

PLUMBING LEGEND

SYMBOL	DESCRIPTION	NOTES / REFERENCE
PLUMBING / MED. GAS / FIRE STAND PIPE RISER DESCRIPTION		
100 SM 75 V 100 ST N/8	PIPE SIZE [IN] / DESCRIPTION IN LEFT TO RIGHT OR TOP TO BOTTOM ORDER BUILDING OUTLINES	
PLUMBING FIXTURES		
WC1 U1 MS1 SH1 EW1	TOILET No. 1 URINAL No. 1 MOP SINK No. 1 SHOWER No. 1 EYEWASH	SINK No. 1 CLINIC SERVICE SINK No. 1 LAVATORY No. 1
FOR PLUMBING FIXTURES DESCRIPTION REF. TO SPEC. SECTIONS 22.42.13 & 22.05.23 AND "PLUMBING FIXTURES SERVICE REQUIREMENTS" DETAIL LABELS & SYMBOLS ARE SAMPLES ONLY.		
PLUMBING FIXTURES CONNECTED ON FLOOR ABOVE		
↓	FLOOR DRAIN / URINAL	
↘	WATER CLOSET / LAVATORY	
↙	COMBINATION DRAIN / HUB DRAIN	

MECHANICAL DRAWING LIST

DRAWING NO.	DRAWING TITLE	DISCIPLINE
M-1	MECHANICAL DRAWING LIST AND LEGEND	MECHANICAL
M-2	DETAILS & SCHEMATICS	MECHANICAL
M-3	SCHEDULES	MECHANICAL
M-4	LEVEL 1 PART PLAN - PLUMBING - DEMOLITION & NEW WORK	PLUMBING/MEDICAL GAS
M-5	LEVEL 1 & LOWER FAN RM. - HVAC PIPING - DEMOLITION & NEW WORK	HVAC PIPING
M-6	LEVEL 1 PART PLAN - VENTILATION - DEMOLITION & NEW WORK	VENTILATION
M-7	LEVEL 1 PART PLAN - FIRE PROTECTION - DEMOLITION & NEW WORK	FIRE PROTECTION
M-8	LEVEL 0 PART PLAN - MECHANICAL WORK - DEMOLITION & NEW WORK	MECHANICAL

Sub-Consultant

380, 5819 2 Street S.W.
CALGARY, ALBERTA T2H 0H3
Phone: (403) 275-8301
Fax: (403) 252-7877

Sub-Consultant

1000 West Georgia Street, Vancouver, BC V6C 2S5 | www.bushbohlman.com

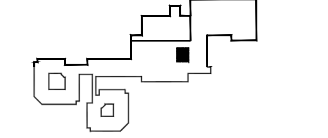
Sub-Consultant

ISSUES:

No.	Date	Description
0	2020/02/13	ISSUED FOR 50% CD REVIEW
1	2020/02/26	ISSUED FOR 100% CD SIGNOFF
2	2020/04/30	ISSUED FOR TENDER
3	2020/10/06	ISSUED FOR CONSTRUCTION

Client:

Keyplan:



North:



Project:

**FORT ST. JOHN HOSPITAL
CT SCANNER REPLACEMENT**

HMA Project Number: 219-1374

Drawing Title:
**MECHANICAL DRAWING LIST
& LEGEND**

Designed by: _____ Reviewed by: _____

Drawing Number:

M-1

Scale: _____ Revision No: _____

N.T.S.

Sub-Consultant

Sub-Consultant

Sub-Consultant

ISSUED:

No.	Date	Description
0	2020/02/13	ISSUED FOR 50% CD REVIEW
1	2020/02/26	ISSUED FOR 100% CD SIGNOFF
2	2020/04/30	ISSUED FOR TENDER
3	2020/10/06	ISSUED FOR CONSTRUCTION

Client:

Keyplan:

North:

Seal:

Project:

**FORT ST. JOHN HOSPITAL
CT SCANNER REPLACEMENT**

HMA Project Number: 219-1374

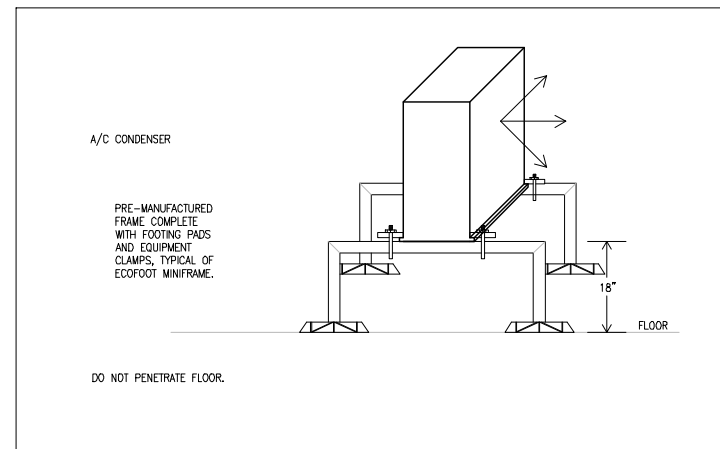
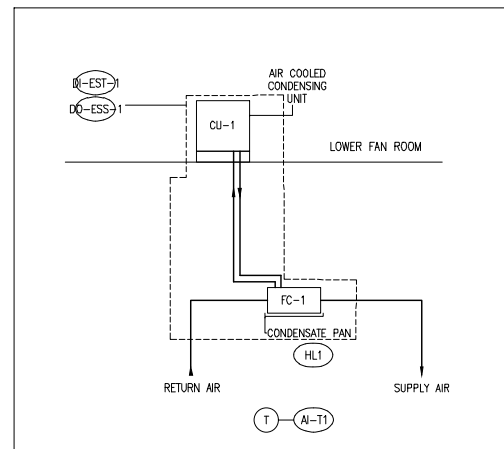
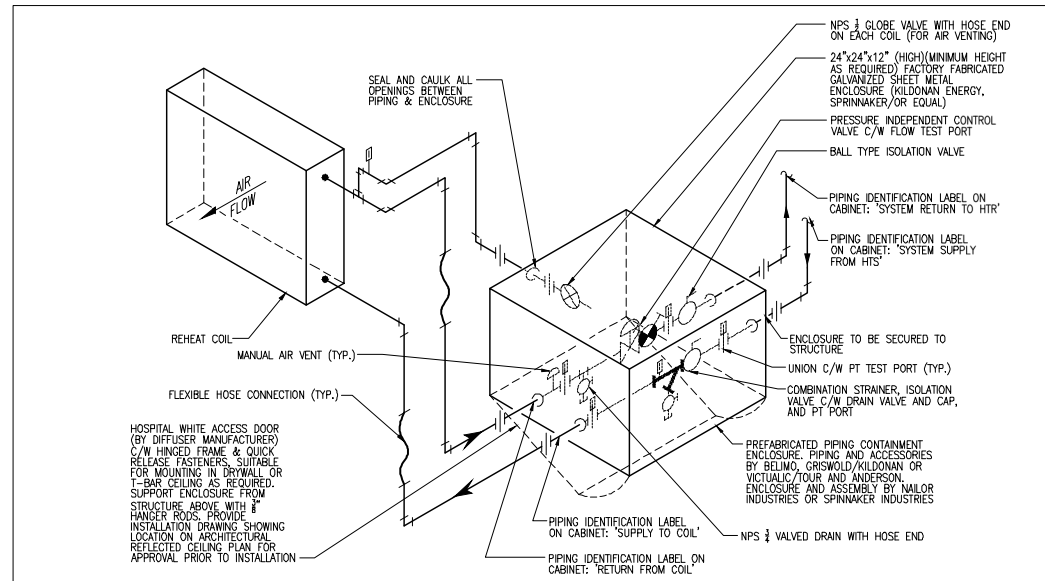
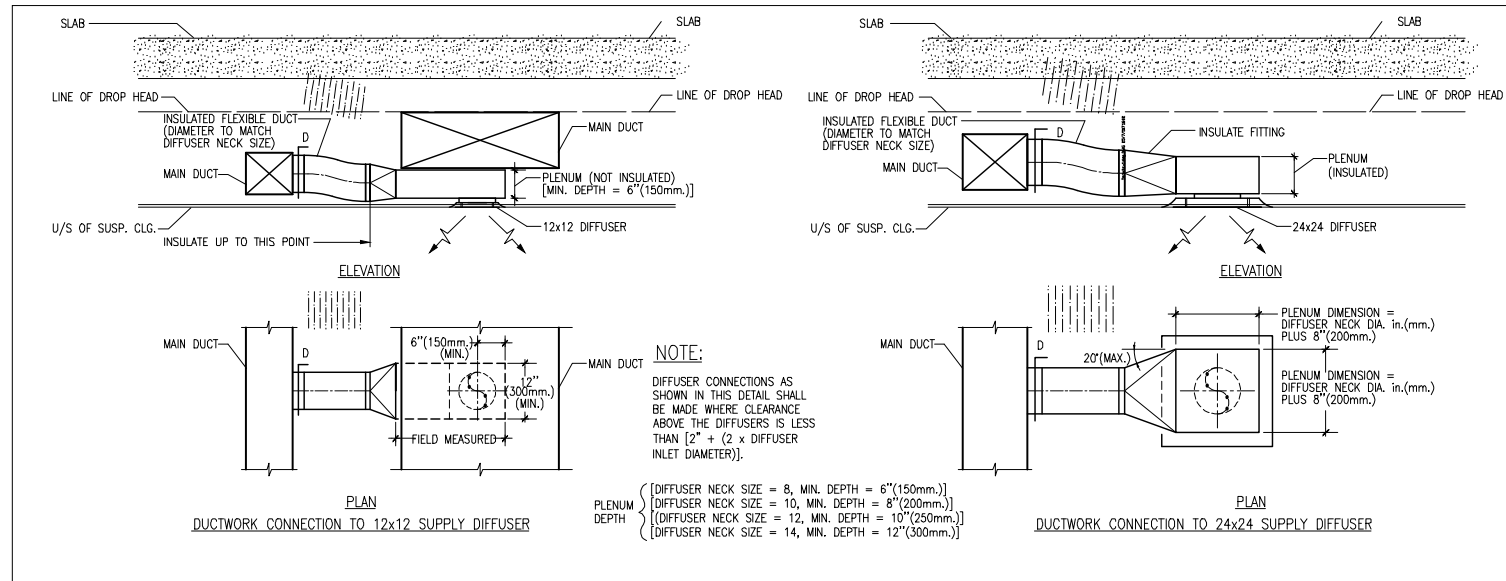
Drawing Title:
DETAILS & SCHEMATICS

Designed by: _____ Reviewed by: _____

Drawing Number:
M-2

Scale: _____ Revision No: _____

N.T.S.



CONTROL POINT IDENTIFICATION LEGEND

POINT ABBREVIATION

1ST LETTER	2ND LETTER	3RD LETTER
A ANALYSIS	A ALARM	A ALARM
CM COMPRESSOR	B POSITION	C CLOSE
D DAMPER	C CLOSE	D DIFFERENTIAL
DP DIFFERENTIAL PRESSURE	D DIFFERENTIAL	H HIGH
E EQUIPMENT	H HIGH	HA HIGH ALARM
EH ELECTRIC HEAT	L LOW	L LOW
F FLOW	M MONITOR (LOCAL DIGITAL DISPLAY & AT BAS)	LA LOW ALARM
H HUMIDITY	O OPEN	O OPEN
I POWER (L, V, KW)	R RESET	
M MISCELLANEOUS	SS START/STOP(ENABLE/DISABLE)	
L LEVEL	ST STATUS	
P PRESSURE	TX TEMPERATURE TRANSMITTER	
T TEMPERATURE	V VELOCITY/RATE	
V VALVE	X TRANSMITTER	

POINT LEGEND

POINT NUMBER

3RD LETTER

2ND LETTER

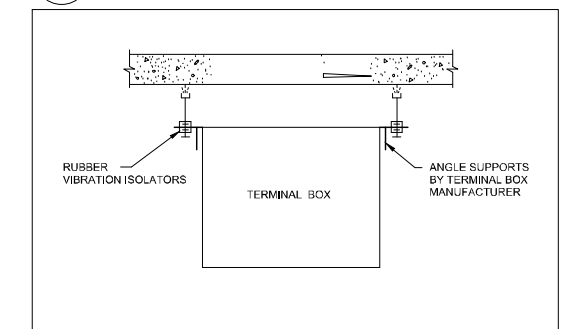
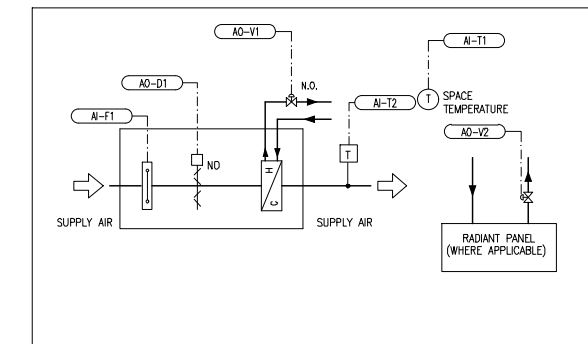
1ST LETTER

POINT TYPE

NOTE: A SEQUENTIAL POINT NUMBER IS ADDED TO THE END OF AN ABBREVIATION IF THERE IS MORE THAN ONE OF THE SAME TYPE OF INSTRUMENT OR DEVICE ON THE SAME SCHEMATIC. (EG. AI-T1, AI-T2.)

POINT TYPE

AI	ANALOGUE INPUT	HARDWIRE INTERLOCK C/W ENDSWITCH
AO	ANALOGUE OUTPUT	HARDWIRE INTERLOCK
DI	DIGITAL INPUT	(DAMPER MOTOR NUMBER)
DO	DIGITAL OUTPUT	(NORMALLY CLOSED - OR 'NO' - NORMALLY OPEN)
SC	SERIAL COMMUNICATION	
MD	MODEM CONNECTION	



GRILLES & DIFFUSERS

REF. LETTER	APPLICATION	MANUFACTURERS DATA		FINISH	REMARKS
		SELECTION MFG.	MODEL DESCRIPTION AND SIZE (mm x mm)		
A1	CEILING SUPPLY DIFFUSER	PRICE	SPD - 600 x 600	B-12 PREMIUM WHITE FINISH.	4-WAY AIR-THROW PATTERN. FRAMES TO SUIT CLG. 4-WAY AIR-THROW PATTERN. PROVIDE REAR PLATE WITH WELD NUTS & LONG TAMPER-PROOF BOLTS (EH PRICE OPTION C58).
C1	RETURN GRILLE	PRICE	80 EGGCRATE - 600 x 600 UNLESS NOTED OTHERWISE	B-12 PREMIUM WHITE FINISH.	FRAMES TO SUIT CLG.

MISCELLANEOUS ELECTRIC EQUIPMENT					MOTOR		VIBRATION		CONTROLS		STARTER												FEEDER		REMARKS			
No.	DESIGNATION	LOC'N	PERFORMANCE DATA	REMARKS	MIN. HP		STATIC BEHL IN.	MOUNT TYPE	BASE	DIAGRAM	LOCATION			POWER SOURCE		H.H.A.			ACCESSORIES IN COVER			REMOTE ACCESSORIES		CONTROLS		INTERLOCKED MOTOR		SIZE
					3PH.	1PH.					PANEL	SPLITTER	MCC	E	N	TYPE	DIAG.	HOA	MSS	P.B	P.L	MTB	DEVICE	LOC'N	SAFETY	OPER-ATING	STARTS	
CU-1	3.78 TON - CONDENSER	LOWER FAN RM. 2/M-5	3.78 TONS, REFER TO SPEC SECTION '23 81 26'	C/W SUPPORT, REFER TO DETAIL 5/M-2	3.5	-	-	-	-	-	-	-	-	-	-	-	-	-	-	-	-	-	-	-	-	-	-	3#12+G - 3/4"

No.	DESIGNATION	LOCATION	DUCTLESS SPLIT AIR CONDITIONERS (COOLING ONLY)					UNIT ELEC. DATA			STARTER					FEEDER		NOTES
			AIR FLOW (CFM)	EAT DB/WB °F	EXT. S.P. IN. H2O	REFR. TYPE	COOLING CAPACITY SEN. BTU/H	TOTAL BTU/H	CONSTRUCTION	VOLTAGE/PHASE	MOTOR HP	TOTAL FULL LOAD CURRENT, A	LOC'N	POWER SOURCE	W/F	B.A.S	SIZE	
FC-1	3.5-TON DUCTED UNIT	5.1.0.4 - CORRIDOR/M-6	1300	80/63	0.50	R-410A	38,510	41,205	SEE SPEC SECTION '23 81 26'	208/1	3/4	2 x 5.9	-	-	-	-	-	2#12+G-3/4"

① ALL UNITS C/W OEM CONTROLLER AND PROGRAMMABLE THERMOSTAT PROVIDE SERIAL COMMUNICATION PORTS FOR EXISTING BAS ENABLE/DISABLE AS WELL AS MONITORING. REFER TO SPEC FOR FURTHER INFORMATION.

HOT WATER RE-HEAT TERMINAL UNIT SCHEDULE														
MANUFACTURERS DATA						REHEAT COIL DATA							DISCHARGE DUCT SIZE (UNLESS NOTED OTHERWISE) (mm x mm)	REMARKS
UNIT SIZE	INLET DIA. (mm)	RECTANGULAR BRANCH TAP OR INLET DUCT SIZE (mm x mm)	SELECTION MFG.	MODEL No.	MAX. AIR FLOW (CFM)	ENT. TEMP. (°C)	AIR LEAV. TEMP. (°C)	FRICTION (S.P. DROP) (IN. W.C.)	ENT. TEMP. (°C)	MAX. FLOW (CFM)	MAX. P.D. (PSI)	RUNOUT PIPE SIZE (NPS)		
6	150	250 x 150	E.H. PRICE	SDV-5000	118	12.8	25.6	12.5	35	0.0188	1	3/4	300 x 250	
7	175	300 x 200	E.H. PRICE	SDV-5000	189	12.8	25.6	17.6	35	0.041	1	3/4	300 x 300	
8	200	350 x 200	E.H. PRICE	SDV-5000	280	12.8	25.6	32.3	35	0.102	5.01	3/4	300 x 300	
9	225	400 x 225	E.H. PRICE	SDV-5000	342	12.8	25.6	32.3	35	0.125	1.5	3/4	350 x 300	
10	250	500 x 225	E.H. PRICE	SDV-5000	450	12.8	24.6	42.3	35	0.158	1.8	3/4	350 x 300	
12	300	500 x 300	E.H. PRICE	SDV-5000	660	12.8	24.6	47.2	35	0.189	3.6	1	450 x 375	
14	350	500 x 350	E.H. PRICE	SDV-5000	850	12.8	24.6	47.2	35	0.284	4.8	1	600 x 450	
16	400	500 x 400	E.H. PRICE	SDV-5000	1065	12.8	24.6	47.2	35	0.315	6.6	1	600 x 450	

1.) ALL TERMINAL BOXES TO BE CONSTANT VOLUME PRESSURE INDEPENDANT ONE PIECE.
 2.) BOXES SIZE 6 TO 10 TO BE C/W 900mm LONG INTEGRAL SOUND ATTENUATOR. BOXES SIZE 12 & UP TO BE C/W 1500mm LONG INTEGRAL SOUND ATTENUATOR. BOXES AND ATTENUATORS TO BE C/W 25mm FOIL FACE LINING WITH ACCESS PANEL IN ATTENUATOR FOR REHEAT COIL.
 3.) REHEAT COILS SHALL BE LOCATED DOWNSTREAM OF ATTENUATORS.
 4.) REHEAT COIL CONTROL VALVES TO BE 'BELIMP' P2020 SERIES CHARACTERIZED CONTROL VALVE C/W 'LF 24' ACTUATOR C/W SPRING RETURN. VALVES AND ACTUATORS TO BE C/W 5 YEAR UNCONDITIONAL WARRANTY. PROVIDE SHOP DRAWINGS WITH SIZE AND CV CALCULATIONS FOR VALVES. PRESSURE DROP TO MATCH COIL. (ACCEPTABLE ALTERNATE TO BE 'DELTA CONTROL PRODUCTS' ELECTRONIC BALL VALVE.)



HHA Angus & Associates Limited Consulting Engineers
 1127 Leslie Street, Toronto, ON, M3C 2J6 Canada
 www.hhangus.com | T 416 443 8200 | F 416 443 8290

Sub-Consultant



310, 5819 2 STREET S.W.
 CALGARY, ALBERTA T2H 0H3
 Phone: (403) 263-8301
 Fax: (403) 252-7877

Sub-Consultant



300-1100 West Georgia Street, Vancouver, BC V6C 2S5 | www.bushbohlman.com

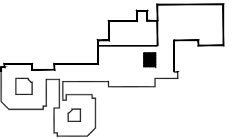
Sub-Consultant

ISSUED:

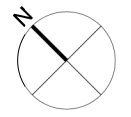
No.	Date	Description
0	2020/02/13	ISSUED FOR 50% CD REVIEW
1	2020/02/26	ISSUED FOR 100% CD SIGNOFF
2	2020/04/30	ISSUED FOR TENDER
3	2020/10/06	ISSUED FOR CONSTRUCTION

Clerk:

Keyplan:



North:



Seal:



Project:

FORT ST. JOHN HOSPITAL
 CT SCANNER REPLACEMENT

HMA Project Number: 219-1374

Drawing Title:

SCHEDULES

Designed by:

Reviewed by:

Drawing Number:

M-3

Scale:

N.T.S.

Revision No:

Sub-Consultant:

KUMLIN SULLIVAN
ARCHITECTURE STUDIO LTD.
310, 5819 2 STREET S.W.
CALGARY, ALBERTA, T2H 0H3
PHONE: (403) 263-8304
FAX: (403) 252-7877

Sub-Consultant:

BUSH, BOHLMAN & PARTNERS LLP
consulting structural engineers
Suite 1500 - 1100 West Georgia Street, Vancouver, BC V6C 2S5 | www.bushbohlman.com

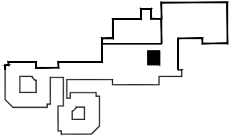
Sub-Consultant:

ISSUED:

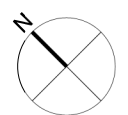
No.	Date	Description
0	2020/02/13	ISSUED FOR 50% CD REVIEW
1	2020/02/26	ISSUED FOR 100% CD SIGNOFF
2	2020/04/30	ISSUED FOR TENDER
3	2020/10/06	ISSUED FOR CONSTRUCTION

Client:

Keyplan:



North:



Seal:



Project:

**FORT ST. JOHN HOSPITAL
CT SCANNER REPLACEMENT**

HMA Project Number: 219-1374

Drawing Title:

**LEVEL 1 PART PLAN
PLUMBING
DEMOLITION & NEW WORK**

Designed by:

Reviewed by:

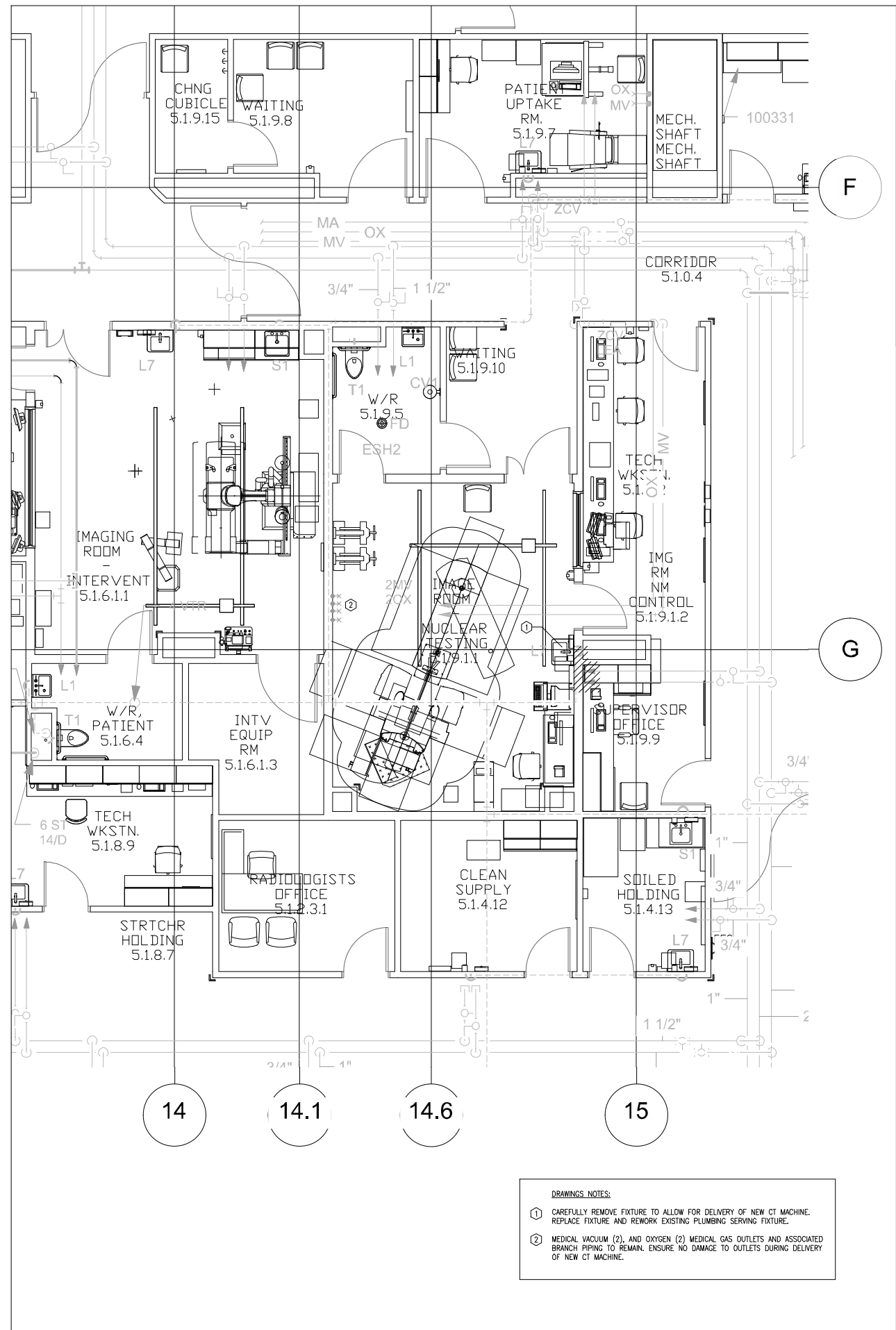
Drawing Number:

M-4

Scale:

1:50

Revision No:



DRAWINGS NOTES:

- CAREFULLY REMOVE FIXTURE TO ALLOW FOR DELIVERY OF NEW CT MACHINE. REPLACE FIXTURE AND REWORK EXISTING PLUMBING SERVING FIXTURE.
- MEDICAL VACUUM (2), AND OXYGEN (2) MEDICAL GAS OUTLETS AND ASSOCIATED BRANCH PIPING TO REMAIN. ENSURE NO DAMAGE TO OUTLETS DURING DELIVERY OF NEW CT MACHINE.

1 LEVEL 1 PART PLAN - PLUMBING - DEMO & NEW
M-4 1:50

Sub-Consultant:

Sub-Consultant:

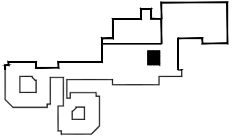
Sub-Consultant:

ISSUED:

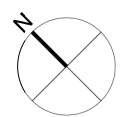
No.	Date	Description
0	2020/02/13	ISSUED FOR 50% CD REVIEW
1	2020/02/26	ISSUED FOR 100% CD SIGNOFF
2	2020/04/30	ISSUED FOR TENDER
3	2020/10/06	ISSUED FOR CONSTRUCTION

Client:

Keyplan:



North:



Seal:



Project:

**FORT ST. JOHN HOSPITAL
CT SCANNER REPLACEMENT**

HMA Project Number: 219-1374

Drawing Title:

**LEVEL 1 & LOWER FAN ROOM
HEATING
DEMOLITION & NEW WORK**

Designed by:

Reviewed by:

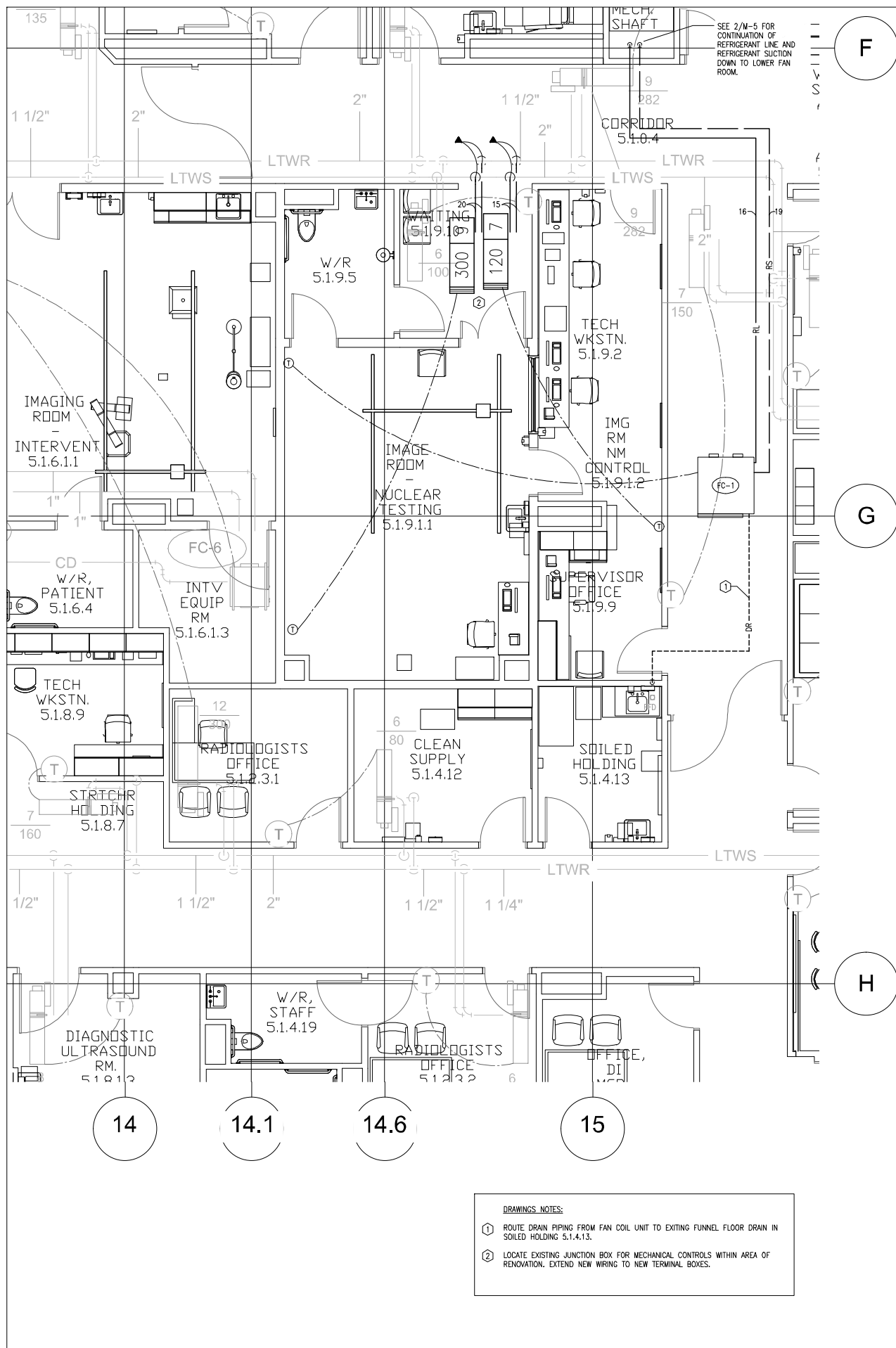
Drawing Number:

M-5

Scale:

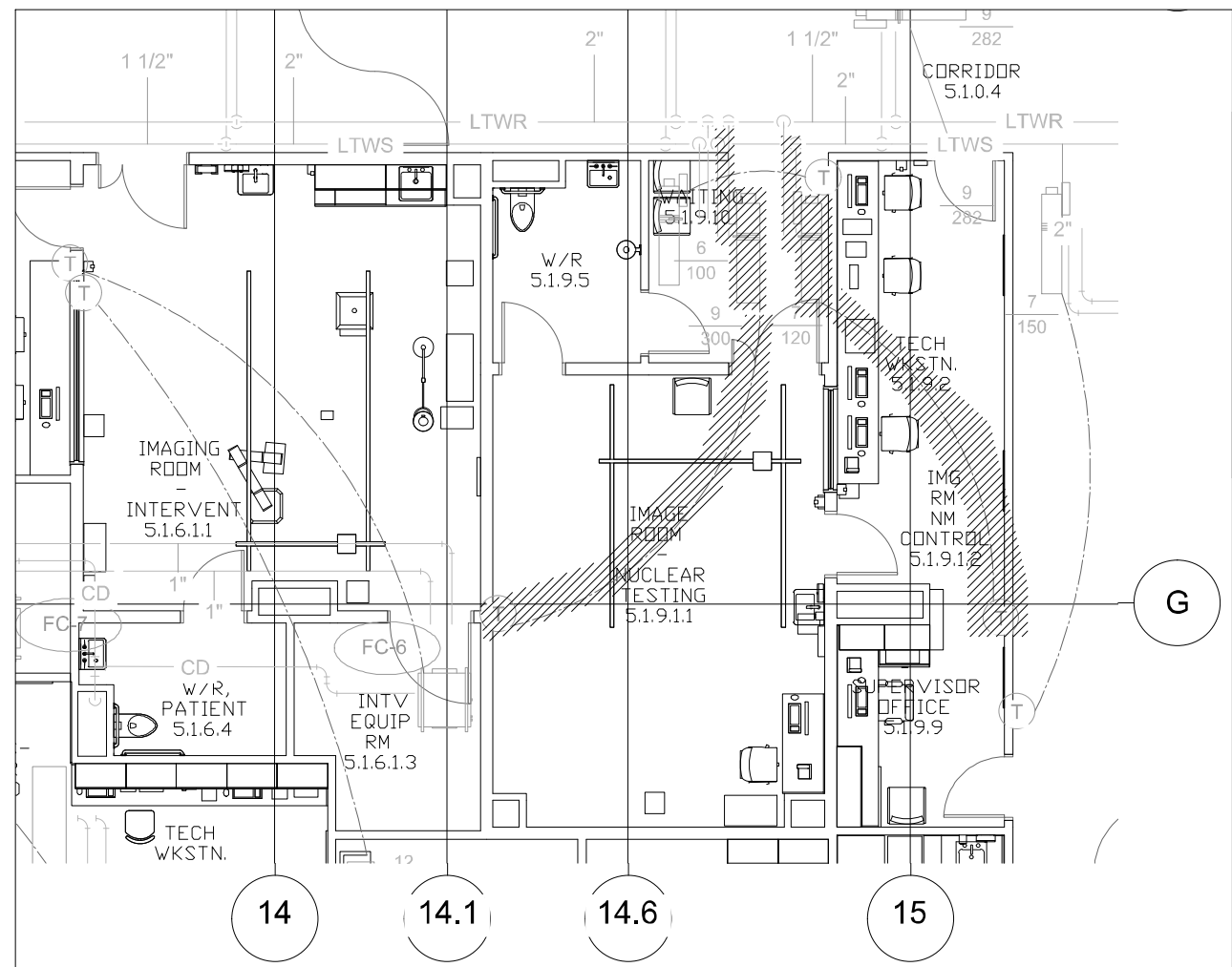
1:50

Revision No:

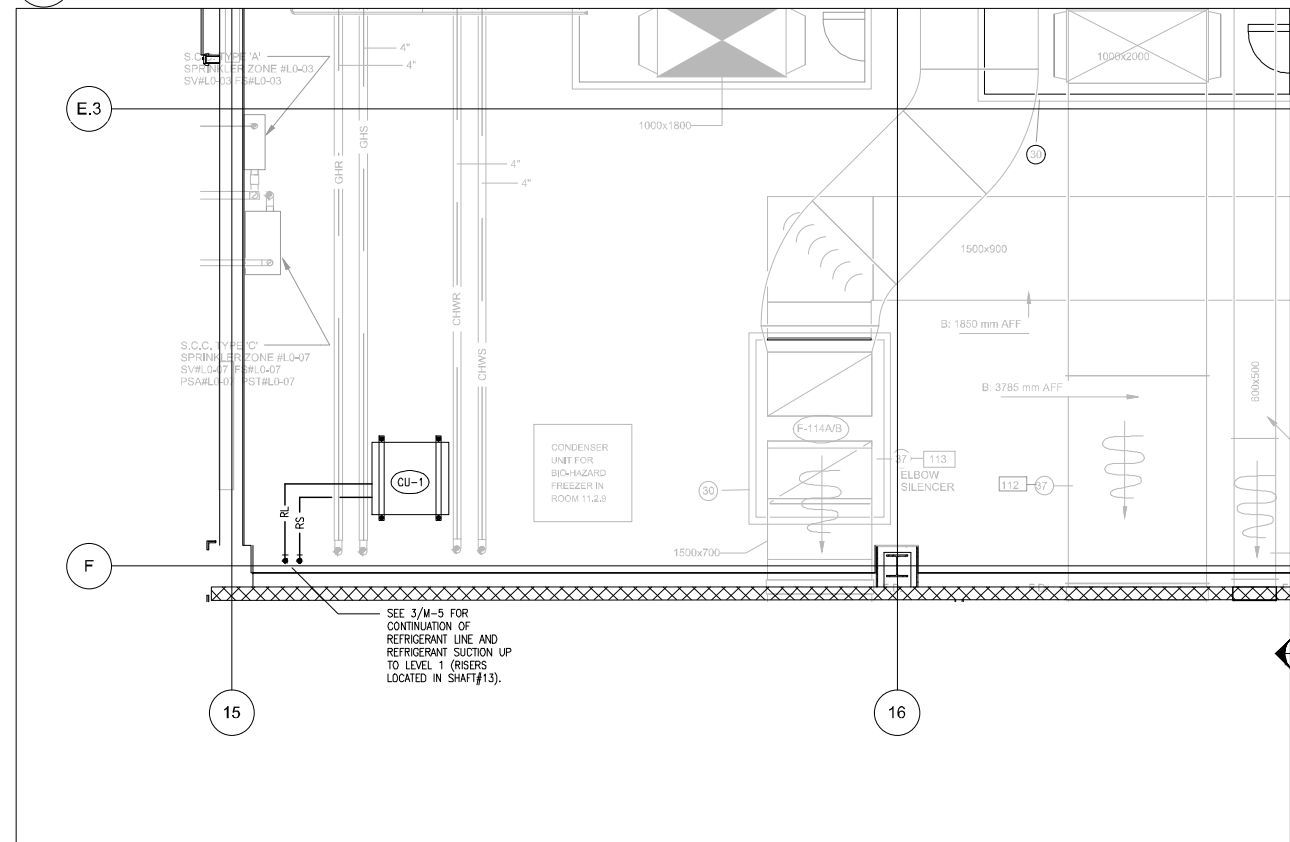


3 LEVEL 1 PART PLAN - HEATING - NEW
M-5 1:50

- DRAWINGS NOTES:**
- ROUTE DRAIN PIPING FROM FAN COIL UNIT TO EXITING FUNNEL FLOOR DRAIN IN SOILED HOLDING 5.1.4.13.
 - LOCATE EXISTING JUNCTION BOX FOR MECHANICAL CONTROLS WITHIN AREA OF RENOVATION. EXTEND NEW WIRING TO NEW TERMINAL BOXES.



1 LEVEL 1 PART PLAN - HEATING - DEMO
M-5 1:50



2 LOWER FAN ROOM PART PLAN - HEATING - NEW
M-5 1:50

- SEE 3/M-5 FOR
CONTINUATION OF
REFRIGERANT LINE AND
REFRIGERANT SUCTION UP
TO LEVEL 1 (RISERS
LOCATED IN SHAFT#13).**

Sub-Consultant:

Sub-Consultant:

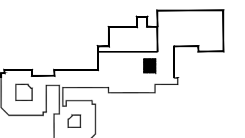
Sub-Consultant:

ISSUED:

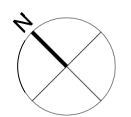
No.	Date	Description
0	2020/02/13	ISSUED FOR 50% CD REVIEW
1	2020/02/26	ISSUED FOR 100% CD SIGNOFF
2	2020/04/30	ISSUED FOR TENDER
3	2020/10/06	ISSUED FOR CONSTRUCTION

Client:

Keyplan:



North:



Seal:



Project:

**FORT ST. JOHN HOSPITAL
CT SCANNER REPLACEMENT**

HMA Project Number: 219-1374

Drawing Title:

**LEVEL 1 PART PLAN
VENTILATION
DEMOLITION & NEW WORK**

Designed by:

Reviewed by:

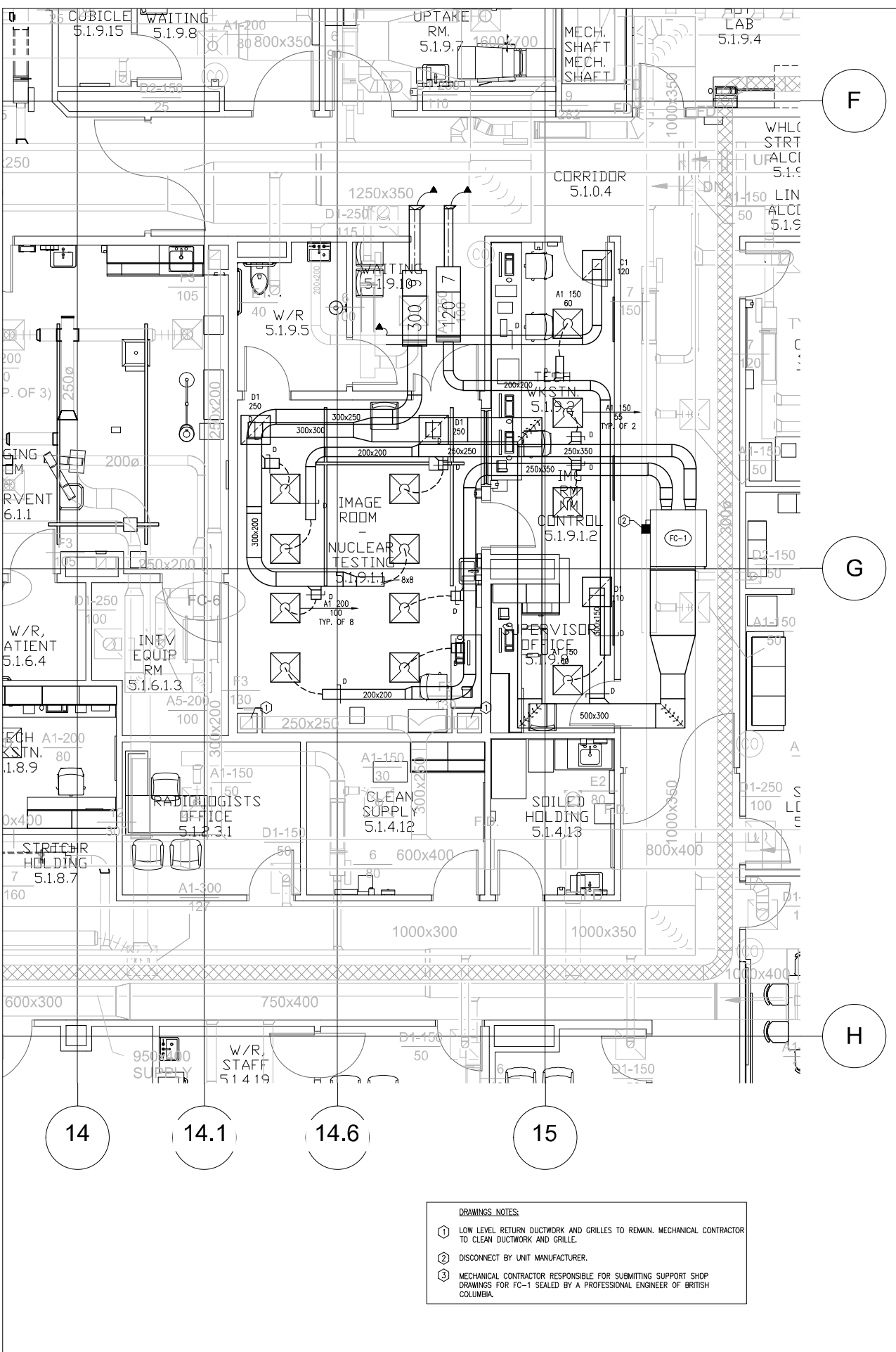
Drawing Number:

M-6

Scale:

1:50

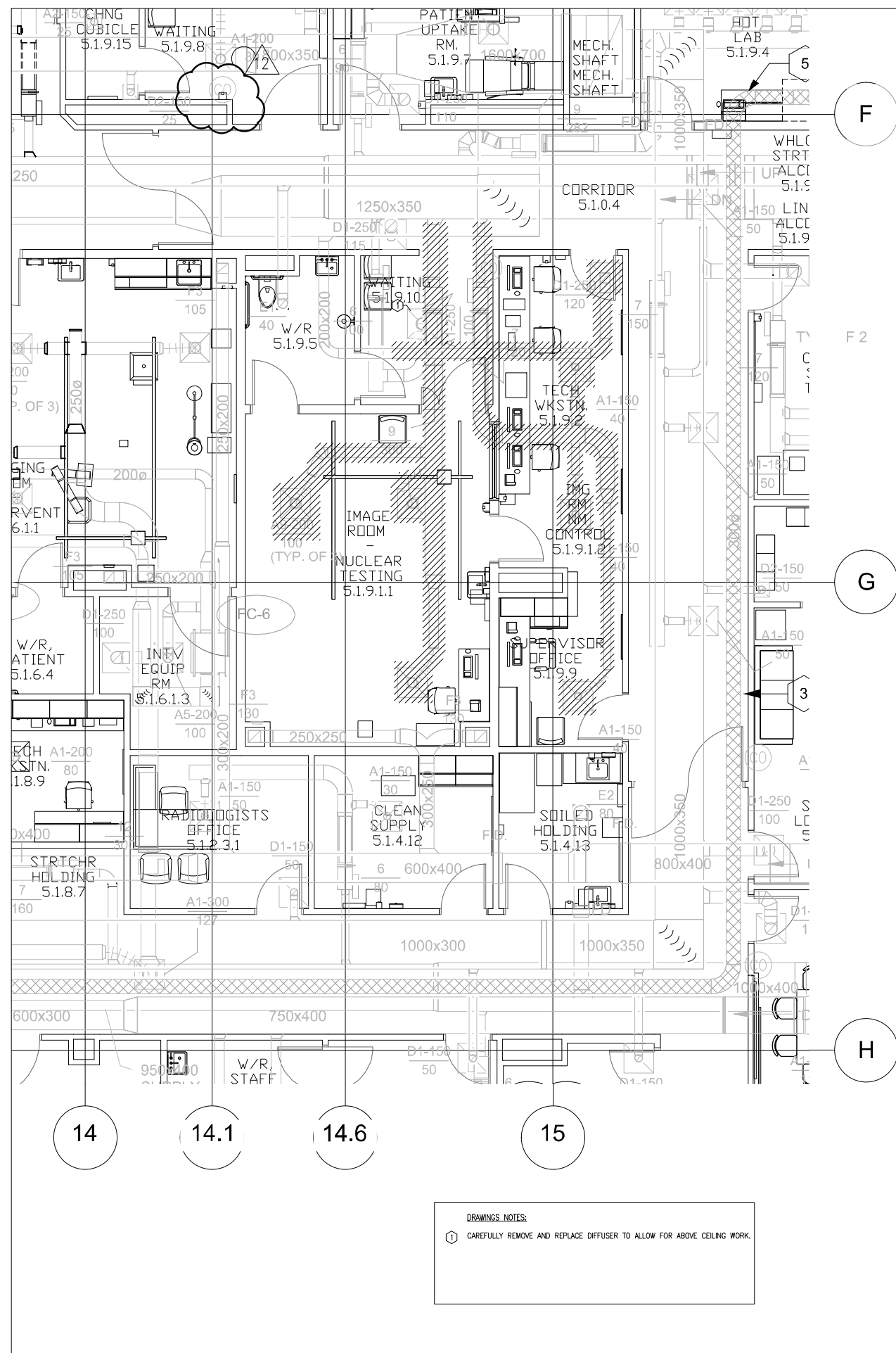
Revision No:



DRAWINGS NOTES:

- LOW LEVEL RETURN DUCTWORK AND GRILLES TO REMAIN. MECHANICAL CONTRACTOR TO CLEAN DUCTWORK AND GRILLE.
- DISCONNECT BY UNIT MANUFACTURER.
- MECHANICAL CONTRACTOR RESPONSIBLE FOR SUBMITTING SUPPORT SHOP DRAWINGS FOR FC-1 SEALED BY A PROFESSIONAL ENGINEER OF BRITISH COLUMBIA.

2 LEVEL 1 PART PLAN - VENTILATION - NEW
M-5 1:50



DRAWINGS NOTES:

- CAREFULLY REMOVE AND REPLACE DIFFUSER TO ALLOW FOR ABOVE CEILING WORK.

1 LEVEL 1 PART PLAN - VENTILATION - DEMO
M-5 1:50

Sub-Consultant:

Sub-Consultant:

Sub-Consultant:

ISSUED:

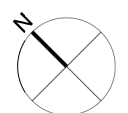
No.	Date	Description
0	2020/02/13	ISSUED FOR 50% CD REVIEW
1	2020/02/26	ISSUED FOR 100% CD SIGNOFF
2	2020/04/30	ISSUED FOR TENDER
3	2020/10/06	ISSUED FOR CONSTRUCTION

Client:

Keyplan:



North:



Seal:



Project:

**FORT ST. JOHN HOSPITAL
CT SCANNER REPLACEMENT**

HMA Project Number: 219-1374

Drawing Title:

**LEVEL 1 PART PLAN
FIRE PROTECTION
DEMOLITION & NEW WORK**

Designed by:

Reviewed by:

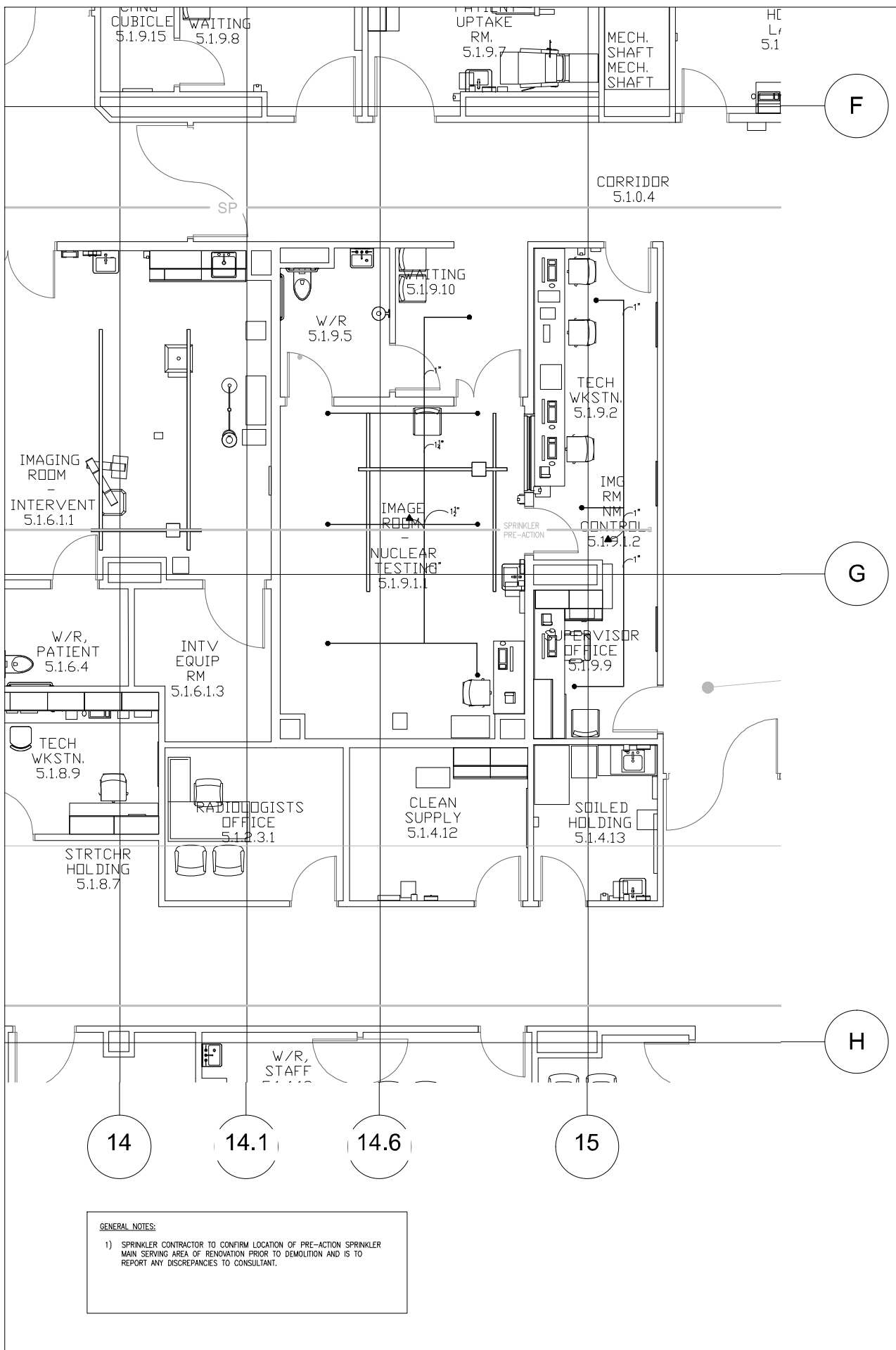
Drawing Number:

M-7

Scale:

1:50

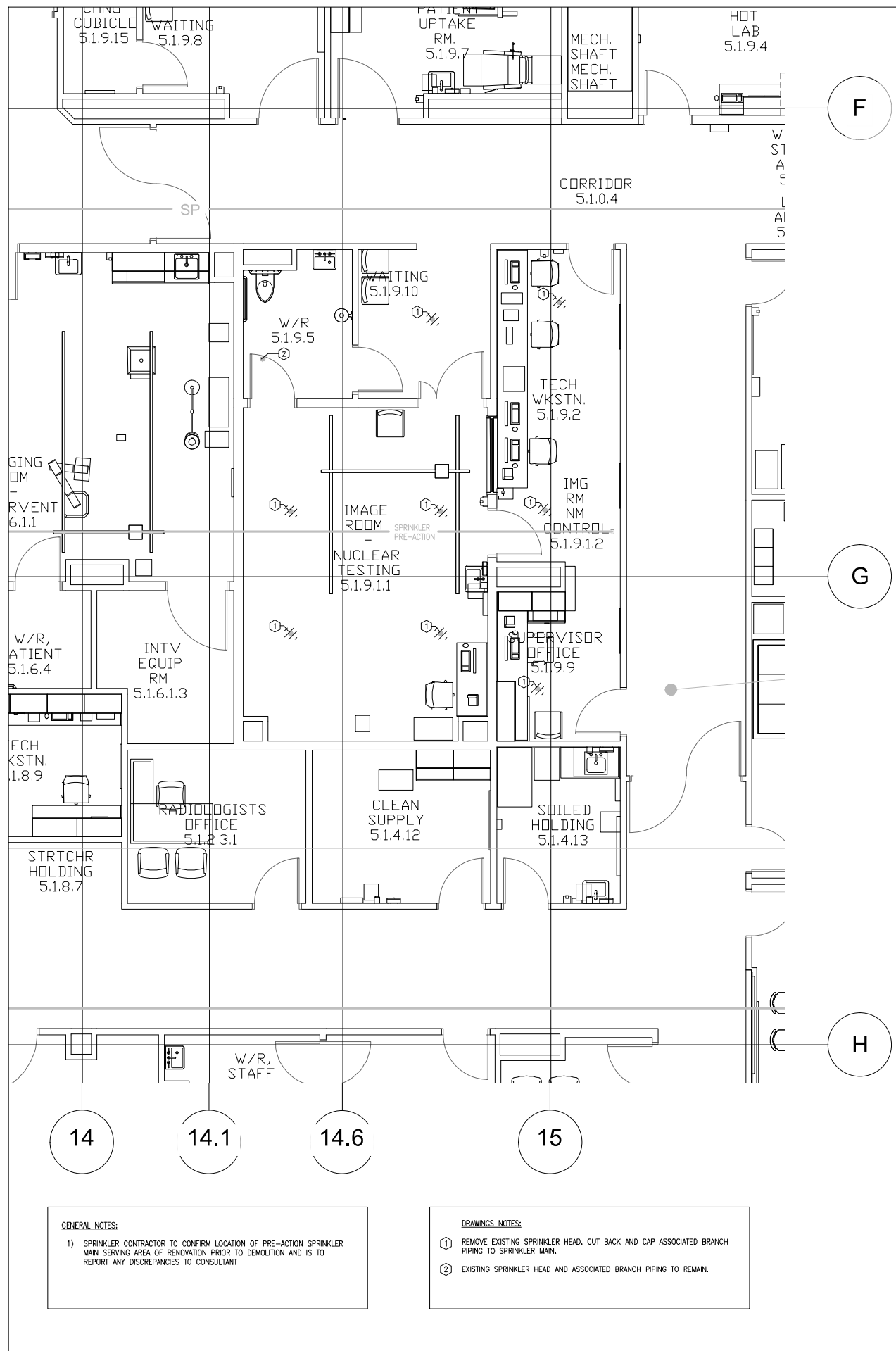
Revision No:



GENERAL NOTES:

- 1) SPRINKLER CONTRACTOR TO CONFIRM LOCATION OF PRE-ACTION SPRINKLER MAIN SERVING AREA OF RENOVATION PRIOR TO DEMOLITION AND IS TO REPORT ANY DISCREPANCIES TO CONSULTANT.

2 LEVEL 1 PART PLAN - FIRE PROTECTION - DEMO
M-7 1:50



GENERAL NOTES:

- 1) SPRINKLER CONTRACTOR TO CONFIRM LOCATION OF PRE-ACTION SPRINKLER MAIN SERVING AREA OF RENOVATION PRIOR TO DEMOLITION AND IS TO REPORT ANY DISCREPANCIES TO CONSULTANT

DRAWINGS NOTES:

- 1) REMOVE EXISTING SPRINKLER HEAD, CUT BACK AND CAP ASSOCIATED BRANCH PIPING TO SPRINKLER MAN.
- 2) EXISTING SPRINKLER HEAD AND ASSOCIATED BRANCH PIPING TO REMAIN.

1 LEVEL 1 PART PLAN - FIRE PROTECTION - NEW
M-7 1:50

Sub-Consultant:

KUMLIN SULLIVAN
ARCHITECTURE STUDIO LTD.
310, 5819 2 STREET S.W.
CALGARY, ALBERTA, T2H 0H3
PHONE: (403) 263-8301
FAX: (403) 252-7877

Sub-Consultant:

BUSH, BOHLMAN & PARTNERS LLP
consulting structural engineers
Suite 1500 - 1100 West Georgia Street, Vancouver, BC V6G 2S5 | www.bushbohlman.com

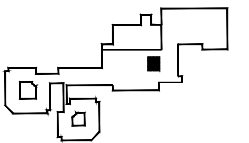
Sub-Consultant:

ISSUED:

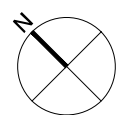
No.	Date	Description
0	2020/02/13	ISSUED FOR 50% CD REVIEW
1	2020/02/26	ISSUED FOR 100% CD SIGNOFF
2	2020/04/30	ISSUED FOR TENDER
3	2020/10/06	ISSUED FOR CONSTRUCTION

Client:

Keyplan:



North:



Scale:

Project:

**FORT ST. JOHN HOSPITAL
CT SCANNER REPLACEMENT**

HMA Project Number: 219-1374

Drawing Title:

**LEVEL 0 PART PLAN
MECHANICAL WORK
DEMOLITION & NEW WORK**

Designed by:

Reviewed by:

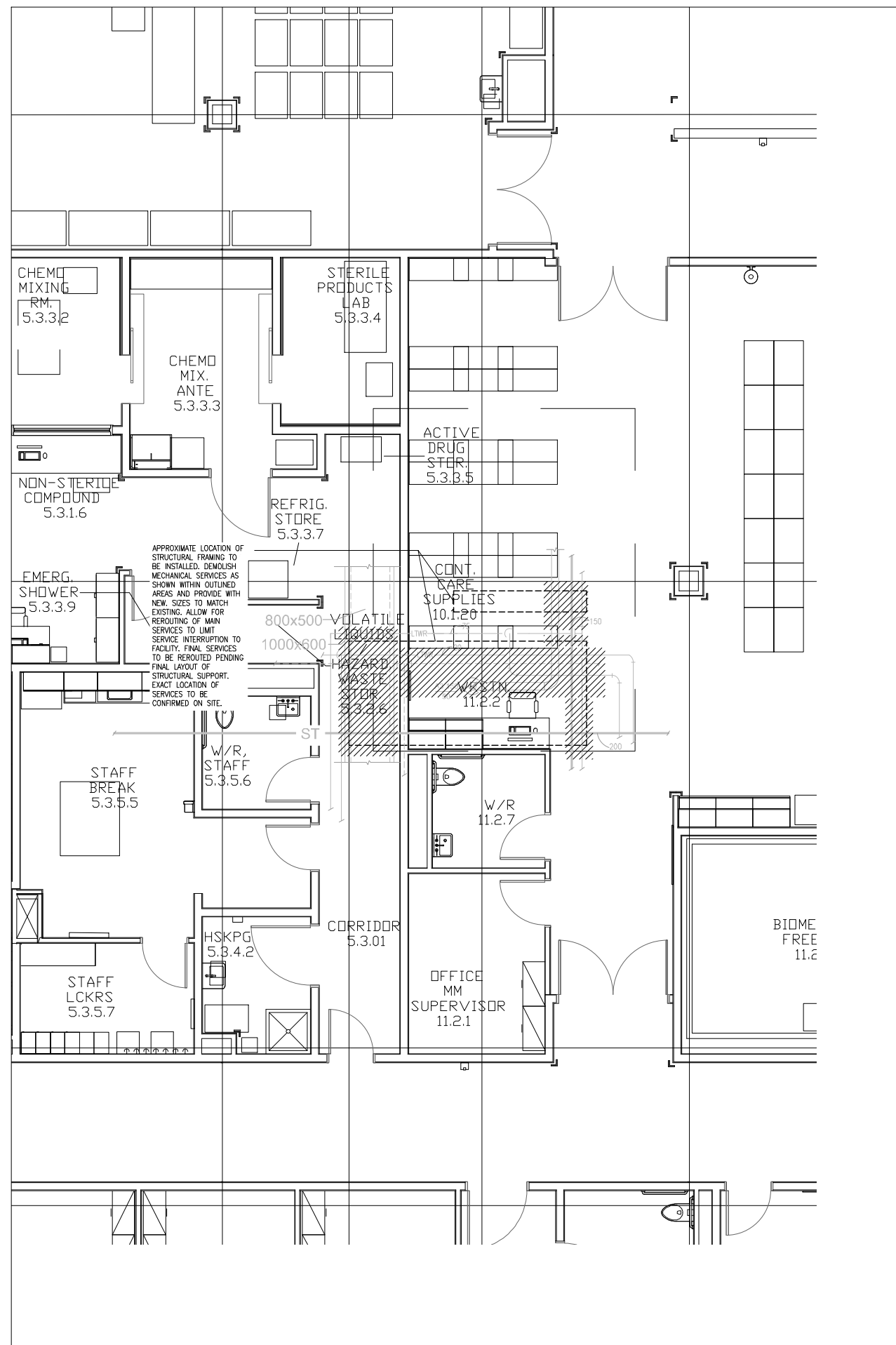
Drawing Number:

M-8

Scale:

1:50

Revision No:



1 LEVEL 0 PART PLAN - MECHANICAL WORK - DEMO & NEW
M-8 1:50