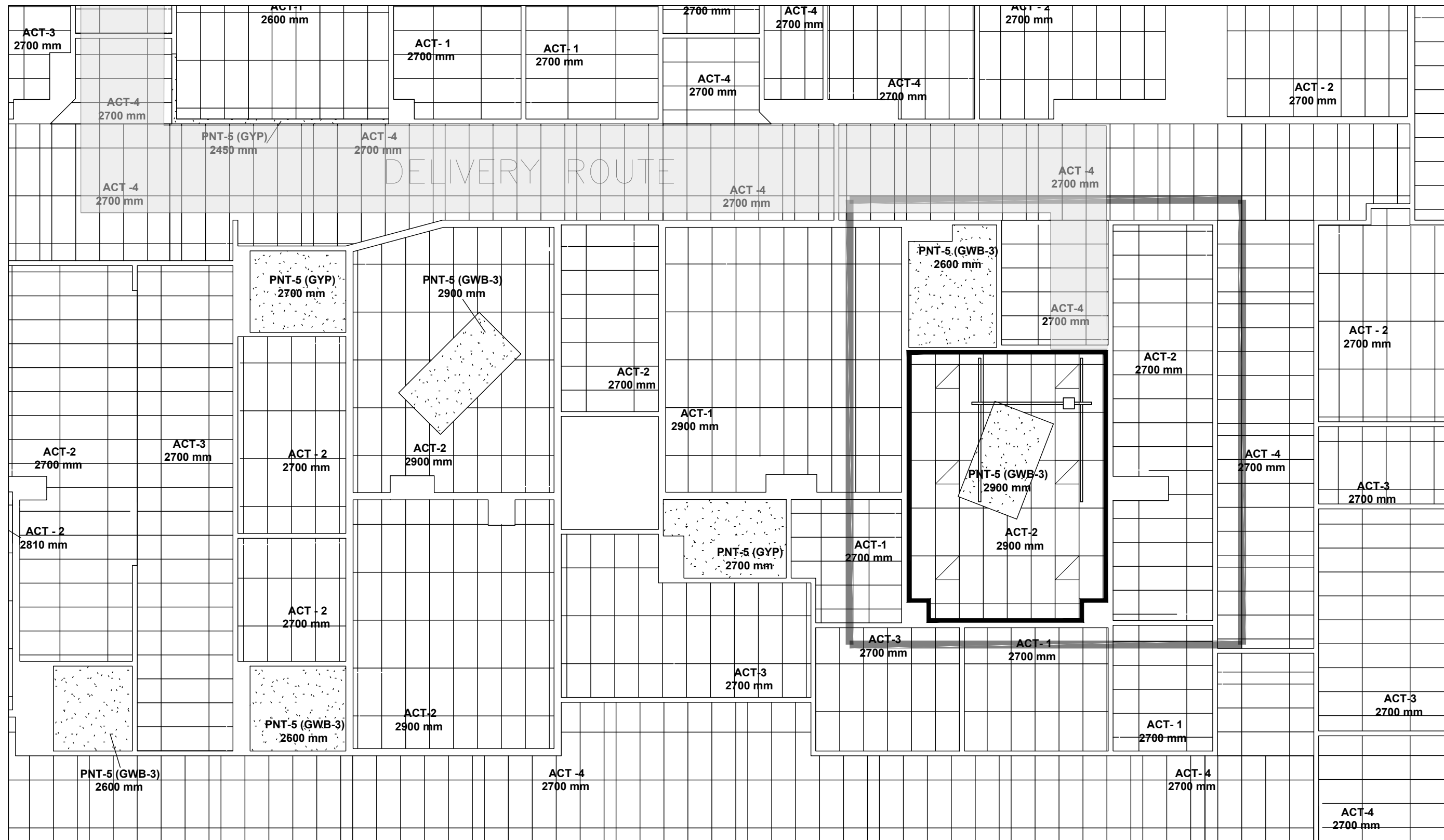


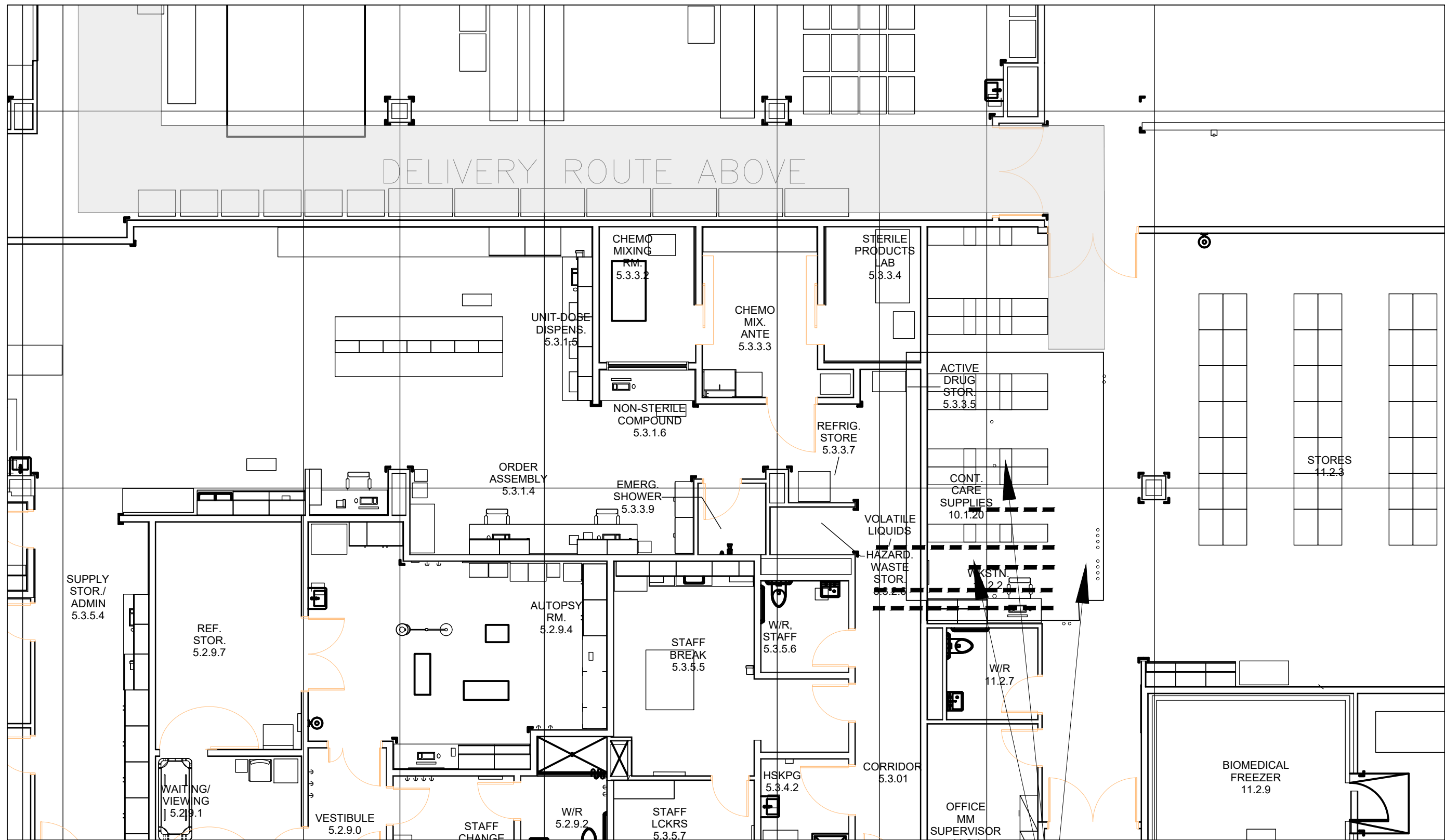
1
A 1.0
AREA PLAN
SCALE: NTS

DRAWING AND PROJECT NOTES

1. ALL RENOVATION AND CONSTRUCTION TO BE COORDINATED WITH EXISTING AND NEW EQUIPMENT.
2. ALL REQUIREMENTS FOR NEW CT SCANNER INSTALLATION TO BE ASSESSED PRIOR TO ANY DEMOLITION OR RELOCATION OF SERVICES AND EQUIPMENT. CONFIRM CLEARANCES FOR NEW CT SCANNER AND ALL ASSOCIATED EQUIPMENT AND SERVICES.
3. CONFIRM ADDITIONAL SME REQUIREMENTS PRIOR TO CONSTRUCTION.
4. FOR ADDITIONAL INFORMATION ON METHODS AND MATERIALS SEE ORIGINAL SPECIFICATIONS 'FORT ST JOHN HOSPITAL PROJECT MAY 31 2012'

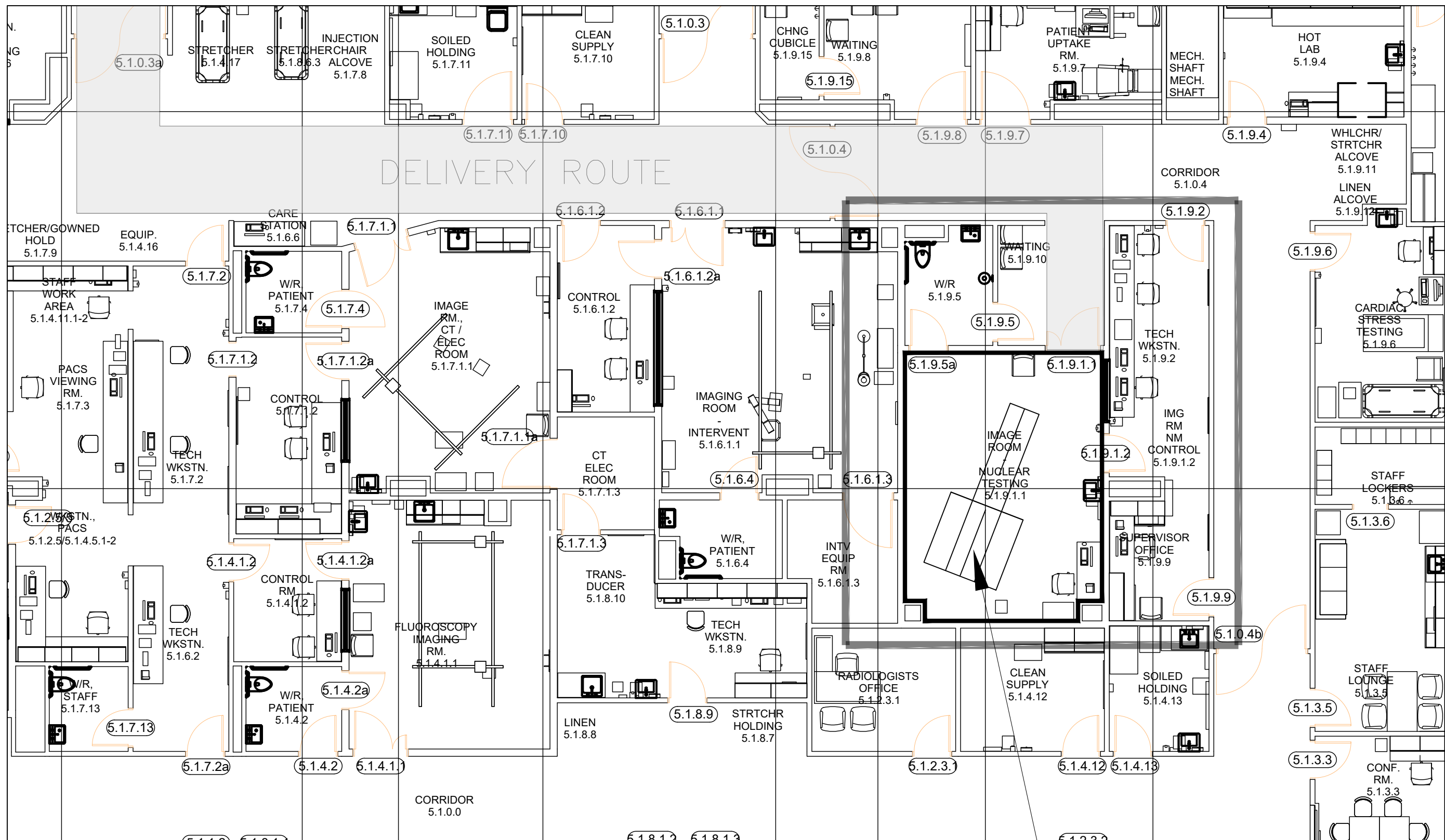


2
A 1.0
EXISTING RCP
SCALE: 1:100



3
A 1.1
PARTIAL BASEMENT PLAN (NEW STRUCTURE SHOWN AT CEILING)
SCALE: 1:100

1. AREA OF CT SCAN ROOM ABOVE - APPROXIMATE LOCATION OF NEW STRUCTURE AND FLOOR CORING SHOWN
2. SEE STRUCTURAL, MECHANICAL, AND ELECTRICAL DRAWINGS FOR WORK AT BASEMENT FLOOR AND CEILING AND COORDINATE ALL WORK TO SUIT NEW CT SCANNER



4
A 1.1
EXISTING MAIN FLOOR PLAN
SCALE: 1:100

Sub-Consultant:

Sub-Consultant:

Sub-Consultant:

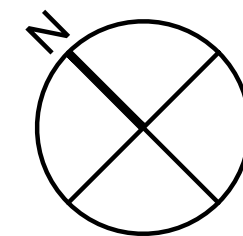
ISSUED:

No.	Date	Description
0	2020/01/xx	Issued for XXXX
1	2020-02-12	ISSUED FOR REVIEW
2	2020-02-26	ISSUED FOR 100% CD SIGNOFF
3	2020-04-30	ISSUED FOR TENDER
4	2020-10-05	ISSUED FOR CONSTRUCTION

Client:

Keyplan:

North:



Seal:

Project:

FORT ST. JOHN HOSPITAL
CT SCANNER REPLACEMENT

HHA Project: 219-1374

Number:

Drawing Title:

AREA PLAN
EXISTING FLOOR PLAN
EXISTING REFLECTED CEILING PLANS

Designed by:

Reviewed by:

Drawing Number:

Scale:

Revision No:

A1.0

Sub-Consultant:

KUMLIN SULLIVAN
ARCHITECTURE STUDIO LTD.

310, 5819 2 Street S.W.,
CALGARY, ALBERTA, T2H 0H3
PHONE: (403) 252-8361
FAX: (403) 252-7877

Sub-Consultant:

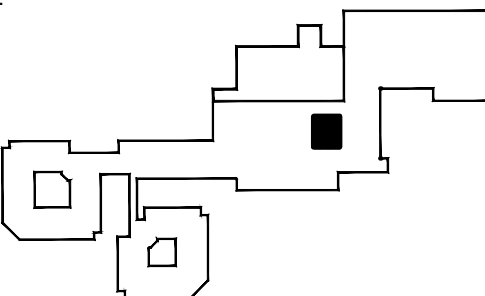
Sub-Consultant:

ISSUED:

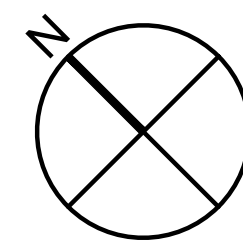
No.	Date	Description
0	2020/01/xx	Issued for XXXX
1	2020-02-12	ISSUED FOR REVIEW
2	2020-02-26	ISSUED FOR 100% CD SIGNOFF
3	2020-04-30	ISSUED FOR TENDER
4	2020-10-05	ISSUED FOR CONSTRUCTION

Client:

Keyplan:



North:



Seal:

Project:

**FORT ST. JOHN HOSPITAL
CT SCANNER REPLACEMENT**

HHA Project Number: 219-1374

Drawing Title:

MAIN FLOOR DEMOLITION PLAN
MAIN FLOOR RCP DEMOLITION PLAN
MAIN FLOOR NEW CONSTRUCTION
MAIN FLOOR RCP NEW CONSTRUCTION

Designed by:

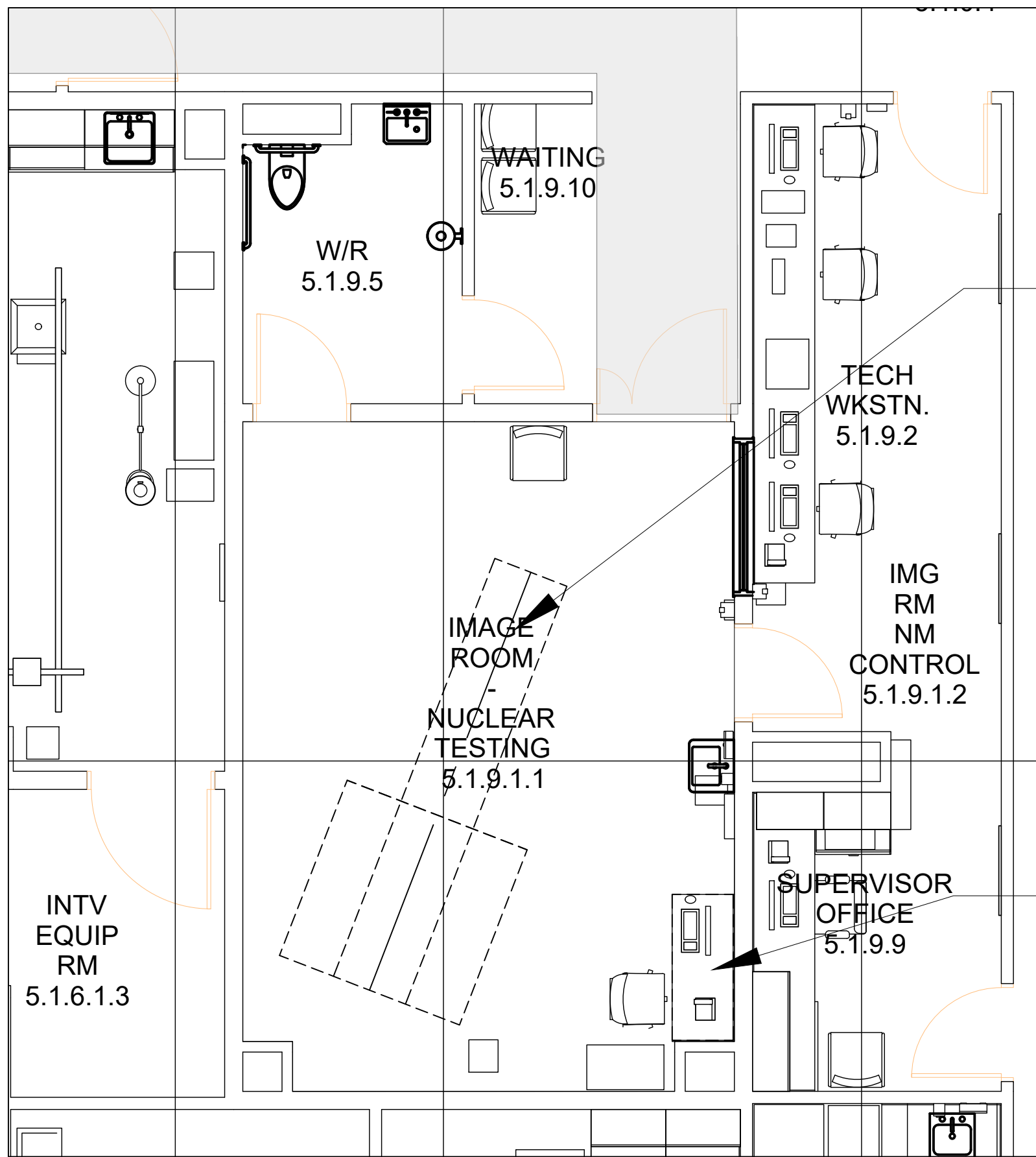
Reviewed by:

Drawing Number:

A1.1

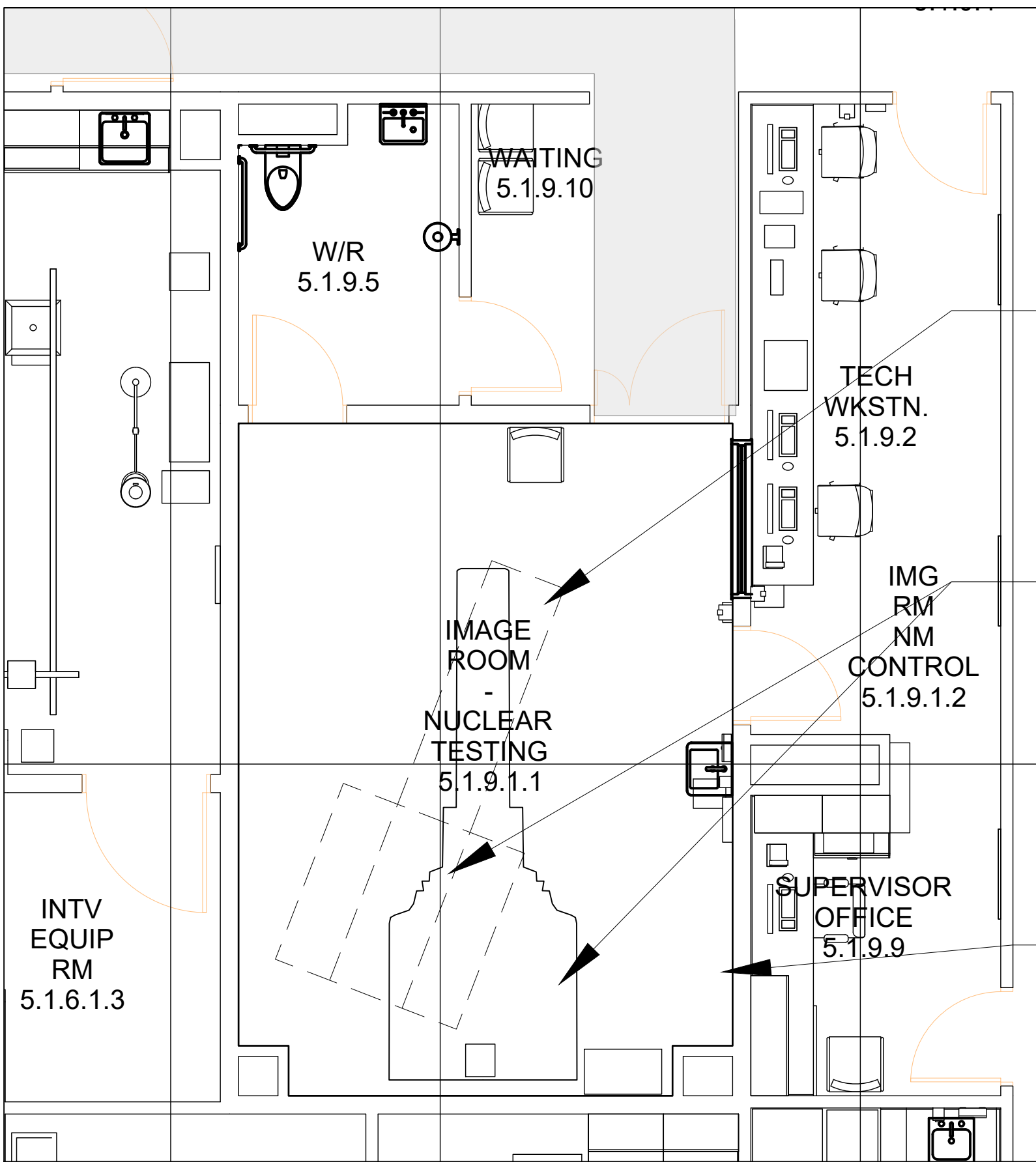
Scale:

Revision No:



1
A 1.1
MAIN FLOOR DEMOLITION PLAN
SCALE: 1:50

1. REMOVE EXISTING CT SCANNER AND ALL FLOOR MOUNTED COMPONENTS
 2. WHERE POSSIBLE REMOVE EXISTING MOUNTING HARDWARE FROM FLOOR - GROUT AND FILL ANY HOLES TO PROVIDE LEVEL SURFACE FOR FLOOR PATCHING
 3. WHERE EXISTING FLOOR MOUNTING SLEEVE CANNOT BE REMOVED - FILL WITH NON SHRINK GROUT TO FLOOR LEVEL - INSURE FINISHED SURFACE THAT DOES NOT TELEGRAPH THROUGH VINYL FLOORING.
 4. SMOOTH ALL EXISTING CT SCANNER HOLES TO ASSURE NO TELEGRAPHING THROUGH NEW FLOORING MATERIAL
- EXISTING EQUIPMENT TO BE REMOVED AND REPLACED TO BE COORDINATED WITH ALL TRADES
- REMOVE EXISTING COUNTER AND SUPPORTS

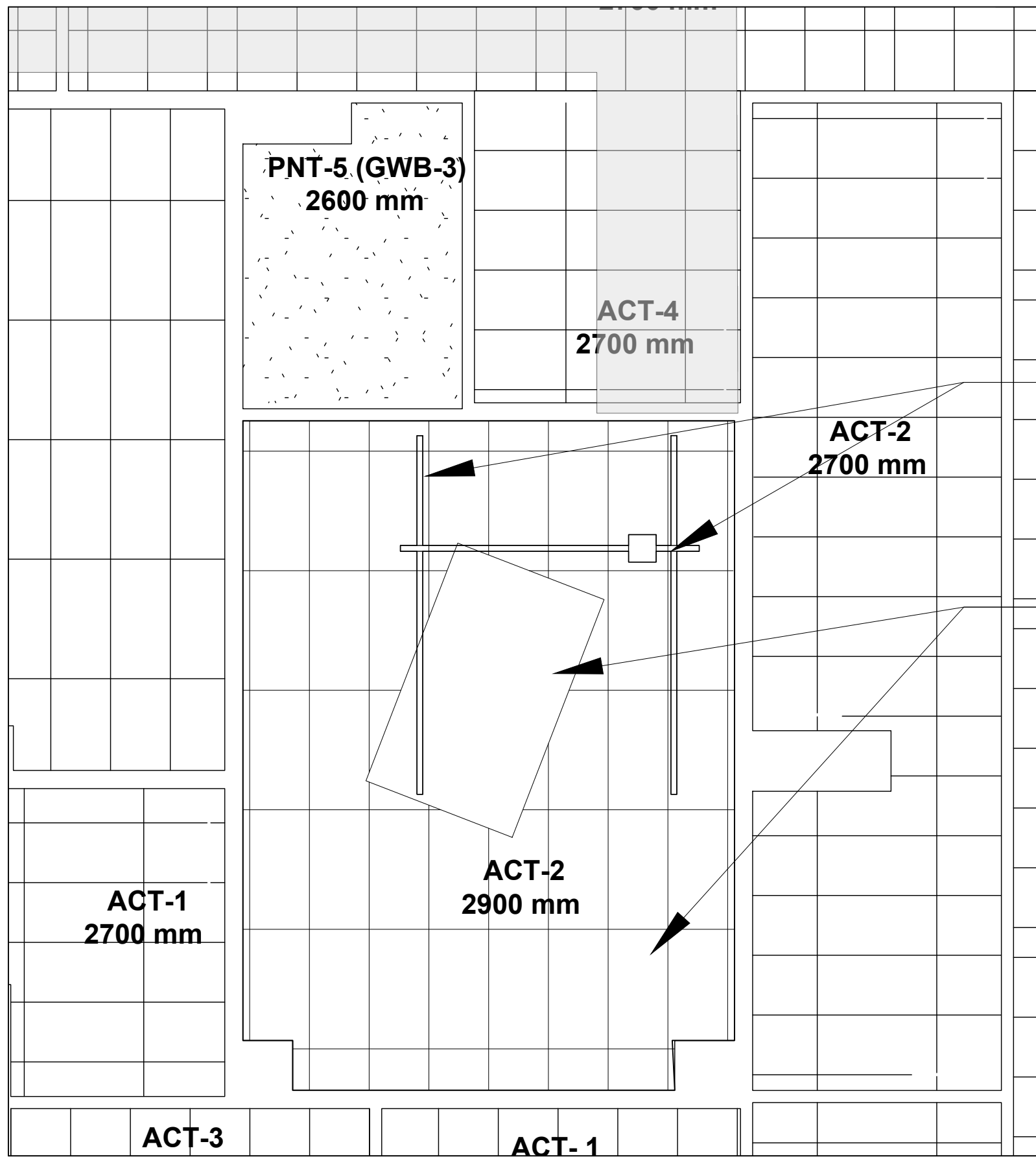


3
A 1.1
MAIN FLOOR NEW CONSTRUCTION
SCALE: 1:50

SEE DETAIL 2/A1.2 FOR SUGGESTED DETAIL FOR FILL AND CLOSURE OF EXISTING REMOVED CT SCANNER - CONFIRM REQUIREMENTS WITH FLOORING SUBTRADE

COORDINATE REMOVAL OF OLD CT SCANNER WITH INSTALLATION OF NEW CT SCANNER. REUSE FLOORING MATERIAL AS POSSIBLE FROM UNDER NEW CT SCANNER LOCATION TO PATCH AND MAKE GOOD ALL VISIBLE MOUNTING HOLES FROM OLD CT SCANNER

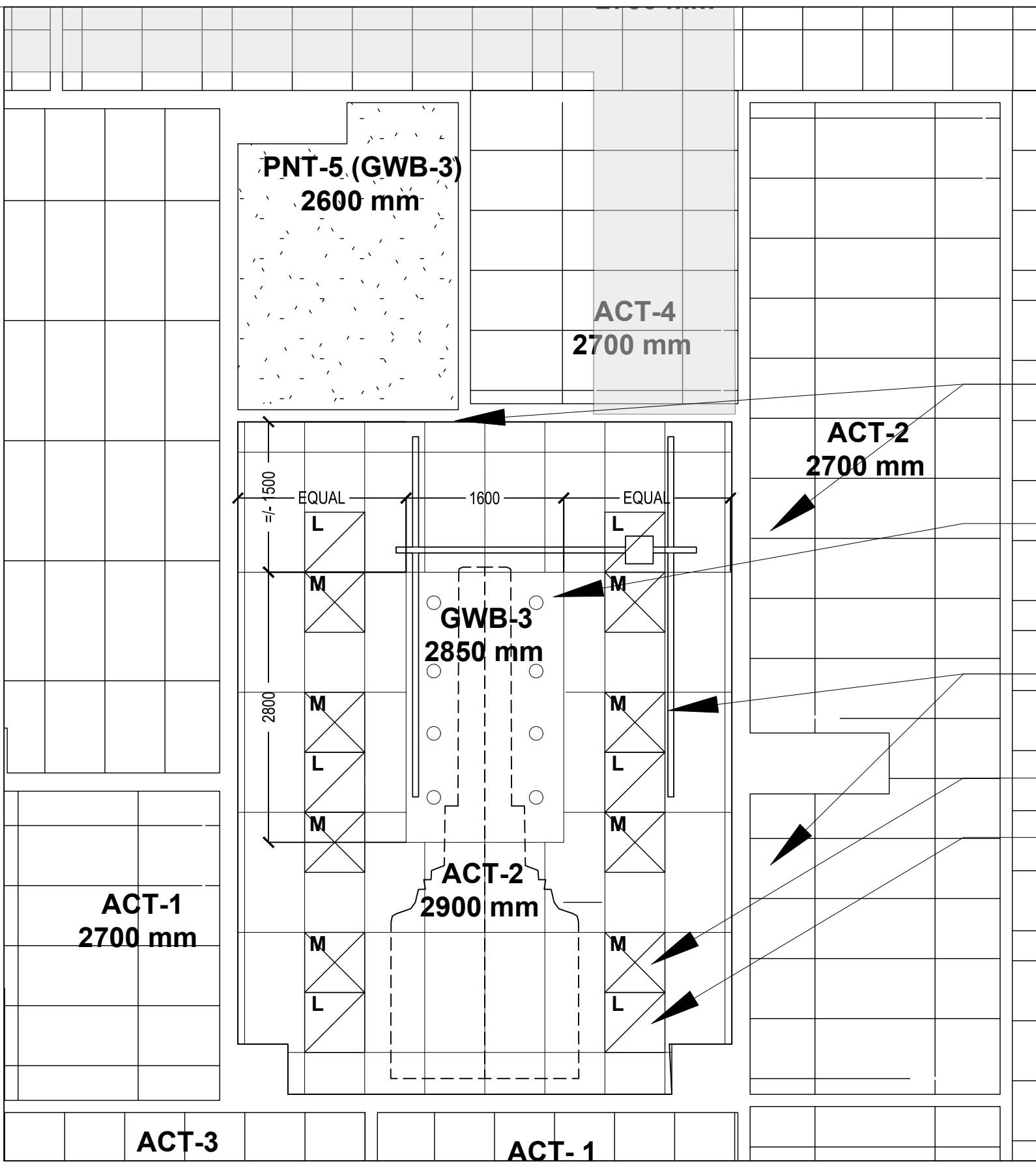
PATCH WALL AND FLOOR WHERE EXISTING COUNTER WAS REMOVED AND PAINT TO MATCH EXISTING FINISHES. REINSTALL BASE AND MAKE GOOD ALL TRADES



2
A 1.1
RCP DEMOLITION PLAN
SCALE: 1:100

REMOVE EXISTING CEILING MOUNTED EQUIPMENT AND SET ASIDE FOR REINSTALLATION IN NEW CEILING

1. REMOVE AND RETAIN ALL EXISTING CEILING COMPONENTS INCLUDING TBAR AND TBAR SUSPENSION COMPONENTS, GWB AND GWB SUSPENSION COMPONENTS, AND ALL LIGHTING AND ASSOCIATED COMPONENTS
2. SET ASIDE ALL COMPONENTS FOR REINSTALLATION AS POSSIBLE - COORDINATE WITH ASSOCIATED DISCIPLINES AND TRADES.



4
A 1.1
RCP NEW CONSTRUCTION PLAN
SCALE: 1:100

REINSTALL ALL EXISTING CEILING MOUNTED EQUIPMENT - CERTIFY ALL MOUNTING HARDWARE PRIOR TO USE.

NEW GWB CEILING TO SUIT DETAIL 1/A1.2 - COORDINATE SIZE AND LIGHTING LAYOUT WITH CT SCANNER REQUIREMENTS

REPLACE ALL EXISTING CEILING MOUNTED EQUIPMENT - CERTIFY ALL MOUNTING HARDWARE PRIOR TO USE.

TYPICAL NEW MECHANICAL DIFFUSER

TYPICAL NEW LED LIGHTING

DRAWING AND PROJECT NOTES

1. BASEMENT PLAN NOT SHOWN - COORDINATE DEMOLITION AND INSTALLATION OF ALL FINISHES AT FLOOR AND CEILING IN BASEMENT TO SUIT STRUCTURAL BRACING. COORDINATE ANY MECHANICAL AND ELECTRICAL REQUIREMENTS IN BASEMENT NECESSARY FOR NEW CT SCANNER. MAKE GOOD ALL TRADES AT FLOOR AND CEILING.

2. CONFIRM ALL NEW CT ANCILLARY EQUIPMENT AND ME EQUIPMENT - PATCH AND MAKE GOOD ALL TRADES.

3. SEE SPEC SECTIONS DWG A1.2 FOR ADDITIONAL INFORMATION ON MATERIALS AND FINISHES

Sub-Consultant:

KUMLIN SULLIVAN
ARCHITECTURE STUDIO LTD.

310, 5819 2 STREET S.W.,
CALGARY, ALBERTA, T2H 0H3
PHONE: (403) 252-8361
FAX: (403) 252-7877

Sub-Consultant:

Sub-Consultant:

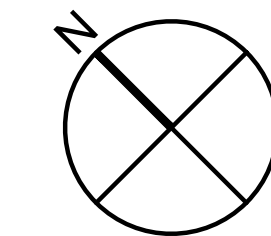
ISSUED:

No.	Date	Description
0	2020/01/xx	Issued for XXXX
1	2020-02-12	ISSUED FOR REVIEW
2	2020-02-26	ISSUED FOR 100% CD SIGNOFF
3	2020-04-30	ISSUED FOR TENDER
4	2020-10-05	ISSUED FOR CONSTRUCTION

Client:

Keyplan:

North:



Seal:

Project:

**FORT ST. JOHN HOSPITAL
CT SCANNER REPLACEMENT**

HHA Project Number: 219-1374

Drawing Title:

DETAILS AND NOTES

Designed
by:

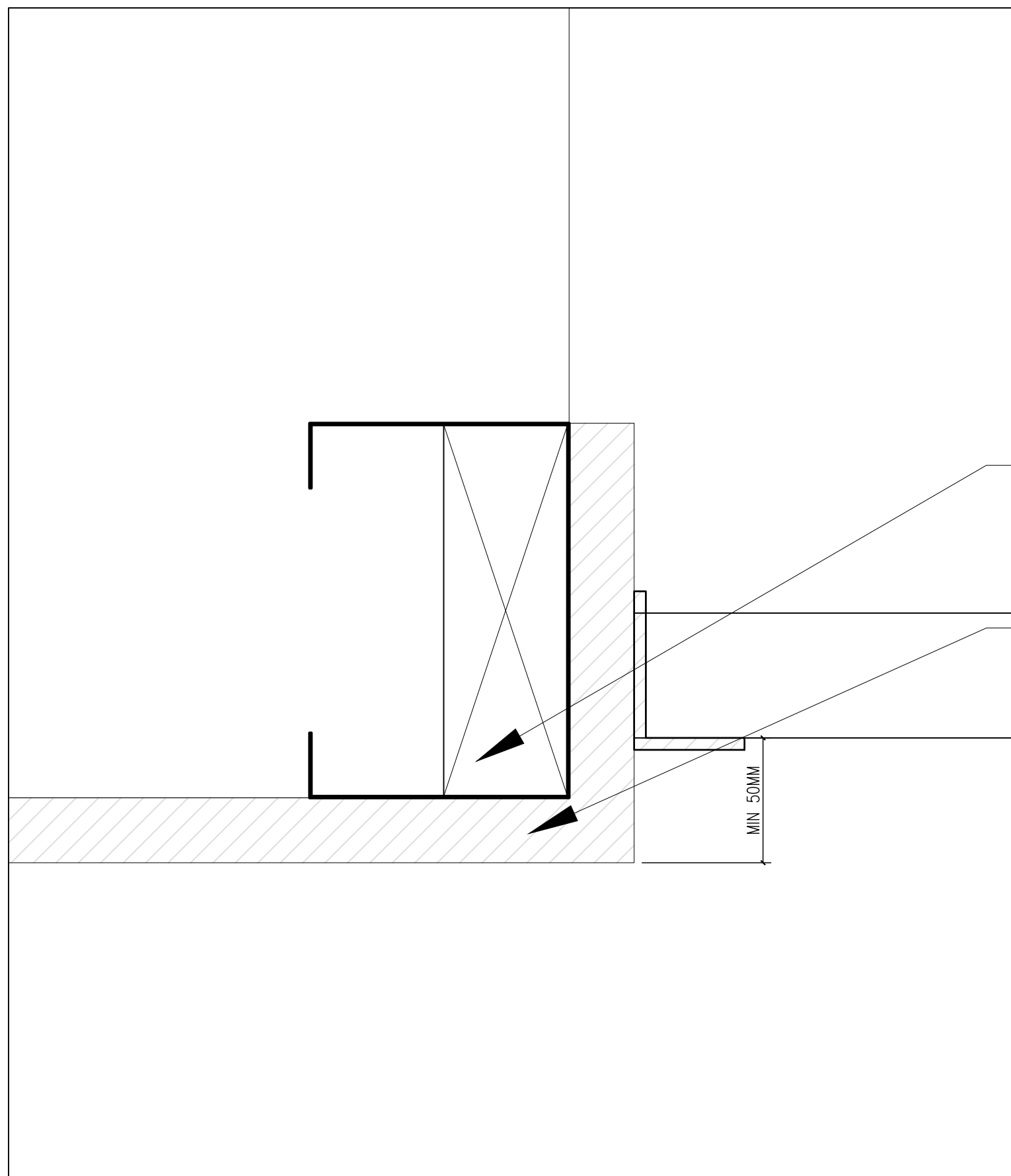
Reviewed
by:

Drawing
Number:

A1.2

Scale:

Revision No:



PROVIDE EDGE CHANNEL; MOUNT FOR GWB
AND COORDINATE BLOCKING FOR TBAR
EDGE MOUNT

13MM GWB SHOWN - COORDINATE
SUSPENSION AND MOUNTING WITH
ELECTRICAL FOR LIGHTING

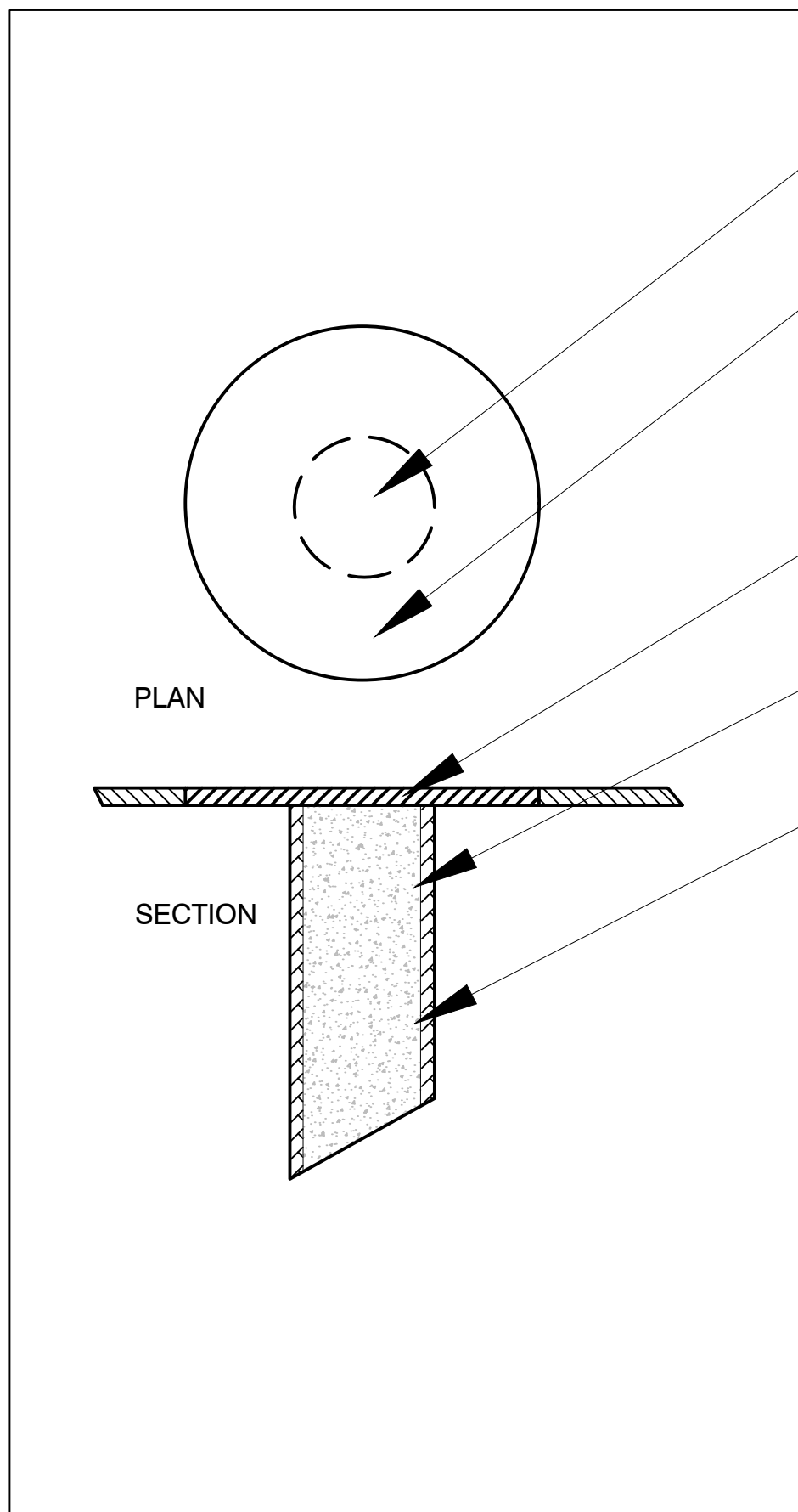
MIN 50MM

1

A 1.2

B/HEAD SECTION AT TBAR

SCALE : NTS



NON-SHRINK GROUT IN MOUNTING SLEEVE
BELOW

PROVIDE VSG PATCH TO MATCH EXISTING -
ENSURE SUFFICIENT SIZE FOR GLUE DOWN
AND WELD WITH MATCHING ROD

VSG PATCH TO SUIT MOUNTING HOLD SIZE

NON SHRINK GROUT TO FLOOR SURFACE -
LEVELED AND FINISHED TO INSURE NO
TELEGRAPHING THROUGH PATCHING

BOLT SLEEVE IMBEDDED IN CONCRETE FLOOR

2

A 1.2

PATCHING DETAIL AT FLOOR

SCALE : NTS

MATERIALS AND FINISHES SPECIFICATION

SECTION 09 2116 GYPSUM WALL BOARD

GWB-3, Mould and Mildew Resistant Interior Panels; Coated inorganic glass mat-faced water-resistant treated gypsum board; conforming to the physical properties of ASTM C1396/C1396-03a and ASTM C1177/C1177M-04e1; rating of 10 "No Mold Growth" as tested for 4 weeks according to ASTM D3273-00(2005), fire rated where indicated. Inspect and confirm product quality and documented mould resistance if panels are imported from China.

- .1 Acceptable Products:
- 1 Certain Teed, ProRoc Moisture and Mold Resistant.
 - 2 CGG, SHEETROCK Humitek
 - 3 Georgia Pacific DensArmor Plus High Performance Interior Panel
 - 4 Lafarge, Mold Defence

SECTION 09 5113 ACOUSTIC CEILING

ACT-2

- 1 Basis of Design: Ceramaguard, Perforated, 608, by Armstrong World Industries
- 2 Fire Rated Type
- 3 Recycled Content: 35%
- 4 Pattern and Perforation: As Scheduled
- 5 Texture: As Scheduled
- 6 Flame Spread Rating - 25 or less in accordance with CAN/ULC - S102
- 7 Smoke Developed - 50 or less in accordance with CAN/ULC - S102
- 8 Noise Reduction Coefficient (NRC) - 0.65 Minimum
- 9 Ceiling Attenuatin Class (CAC) - 38 Minimum
- 10 Light Reflectance (LR) - 0.82 Minimum
- 11 Edge Type - Square
- 12 Colour - White
- 13 Size - As Scheduled

SECTION 09 6500 RESILIENT FLOORING

Sheet Vinyl Flooring

- 1 Safety Flooring:
 - 1 SVF-1: Granite Safe-T by Johnsonite, A Tarkett Company
 - 2 Colours as Scheduled
- 2 Typical Vinyl Flooring:
 - 1 SVF-2: Granite by Johnsonite, A Tarkett Company
 - 2 Colors as Scheduled

FOR ADDITIONAL INFORMATION ON METHODS AND MATERIALS SEE ORIGINAL
SPECIFICATIONS FORT ST JOHN HOSPITAL PROJECT MAY 31 2012