

**COPYRIGHT AND USE OF DOCUMENTS:**  
COPYRIGHT FOR THE ARCHITECT'S INSTRUMENTS OF SERVICE BELONGS TO THE ARCHITECT. SUBMISSIONS OR DISTRIBUTION OF THE ARCHITECT'S INSTRUMENTS OF SERVICE INCLUDING ALL SOFTWARE AND ELECTRONIC MEDIA TO MEET OFFICIAL, REGULATORY REQUIREMENTS OR FOR OTHER PURPOSES IN CONNECTION WITH THE PROJECT IS NOT TO BE CONSTRUED AS PUBLICATION IN CONNECTION WITH THE PROJECT'S RESERVED RIGHTS. THE CLIENT MAY RETAIN COPIES, INCLUDING ELECTRONIC OR DIGITAL AND OTHER REPRODUCIBLE COPIES OF THE ARCHITECT'S INSTRUMENTS OF SERVICE FOR INFORMATION AND REFERENCE IN CONNECTION WITH THE CLIENT'S USE AND OCCUPANCY OF THE PROJECT. COPIES MAY ONLY BE USED FOR THE PURPOSES INTENDED AND FOR A ONE-TIME USE, ON THE SAME SITE, AND FOR THE SAME PROJECT, BY THE CLIENT ONLY AND MAY NOT BE OFFERED FOR SALE OR TRANSFER WITHOUT THE EXPRESS WRITTEN CONSENT OF THE ARCHITECT. EXCEPT FOR REFERENCE PURPOSES, THE ARCHITECT'S INSTRUMENTS OF SERVICE, INCLUDING ALL ELECTRONIC OR DIGITAL FILES AND INFORMATION, SHALL NOT BE USED FOR RENOVATIONS, ADDITIONS, OR ALTERATIONS TO THE PROJECT OR ON ANY OTHER PROJECT WITHOUT A WRITTEN LICENSE FROM THE ARCHITECT FOR THE LIMITED OR REPEAT USE OF THE DOCUMENTS.

INSTRUMENTS OF SERVICE ARE THE DESIGN AND DRAWINGS, SPECIFICATIONS AND REPORTS PREPARED BY OR ON BEHALF OF THE ARCHITECT INCLUDING BUT NOT LIMITED TO PLANS, SKETCHES, DRAWINGS, GRAPHIC REPRESENTATIONS AND SPECIFICATIONS, COMPUTER GENERATED DESIGN AND MATERIAL.

7
6
5
4
3
2
1

ISSUED FOR PRICING  
2021.12.16  
REVISIONS

DESIGNED BY:  
DNA  
CHECKED BY:  
DNA  
DRAWN BY:  
TJ  
DRAWING DATE:  
2021.11.26  
SCALE:  
1/8"=1'-0"  
CONSULTANT:

PROJECT NAME  
**SEABIRD ISLAND  
HEATH CENTRE  
ROOF & WINDOWS REPL.**  
CLIENT

**SEABIRD ISLAND BAND**

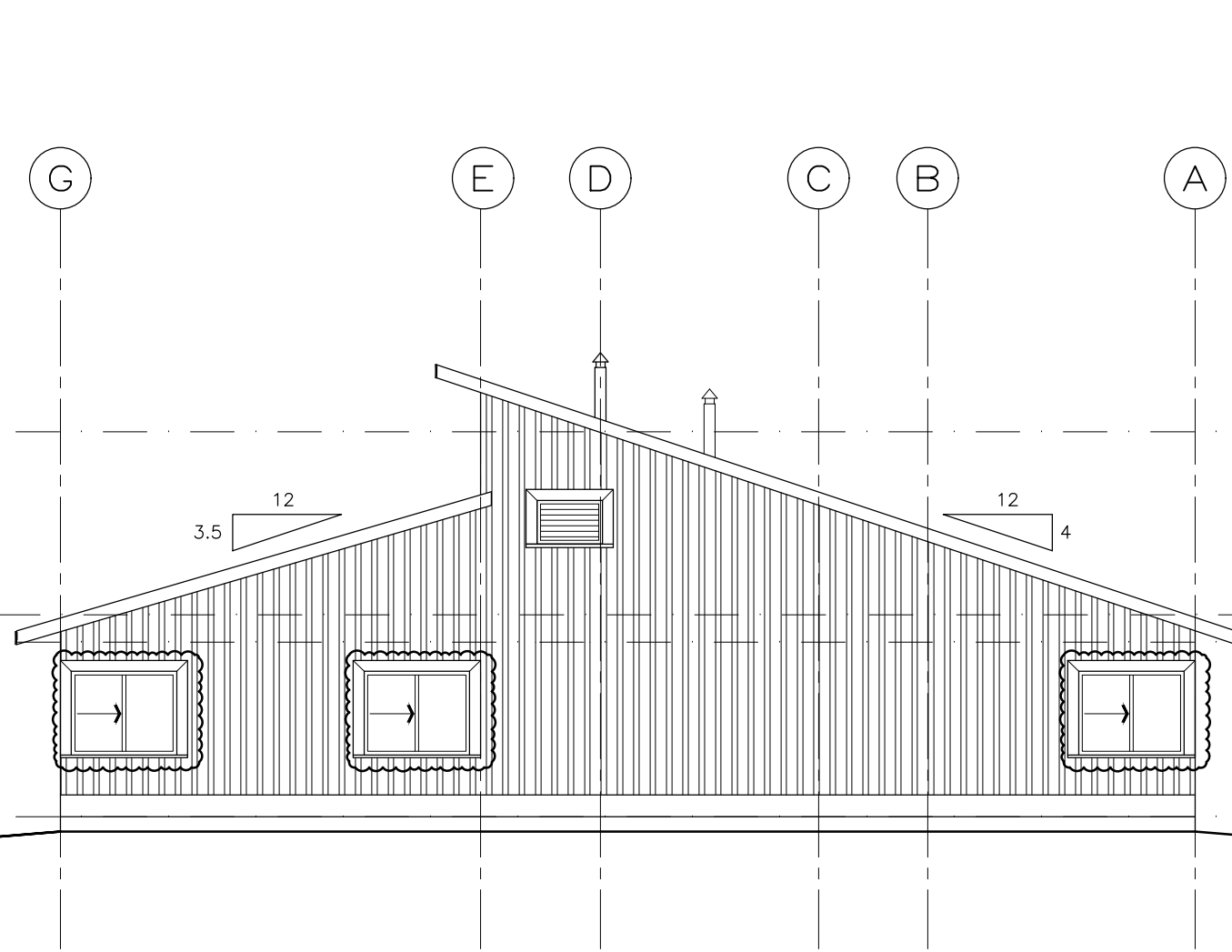
PROJECT ADDRESS  
**CHOWAT ROAD  
AGASSIZ, BC**

DRAWING TITLE  
**BUILDING ELEVATIONS  
& SECTIONS**

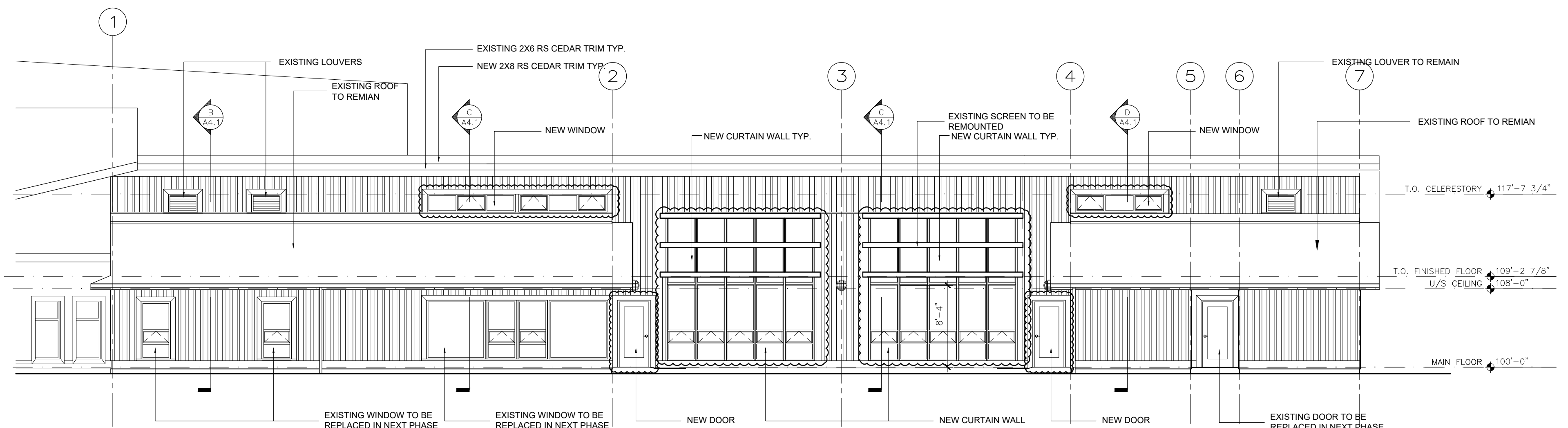
REVISION No. **1**

PROJECT NUMBER **5929**

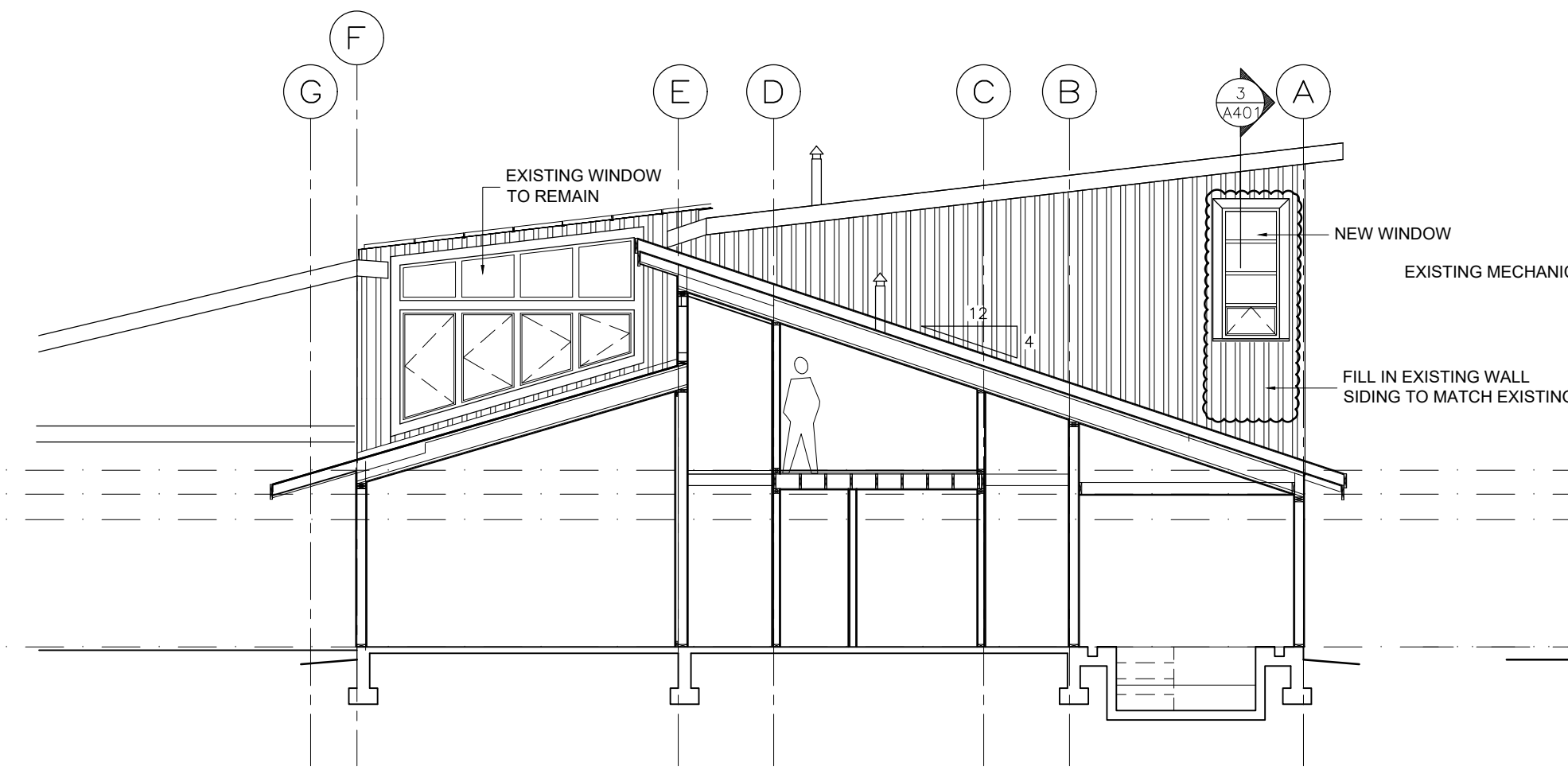
**A301**



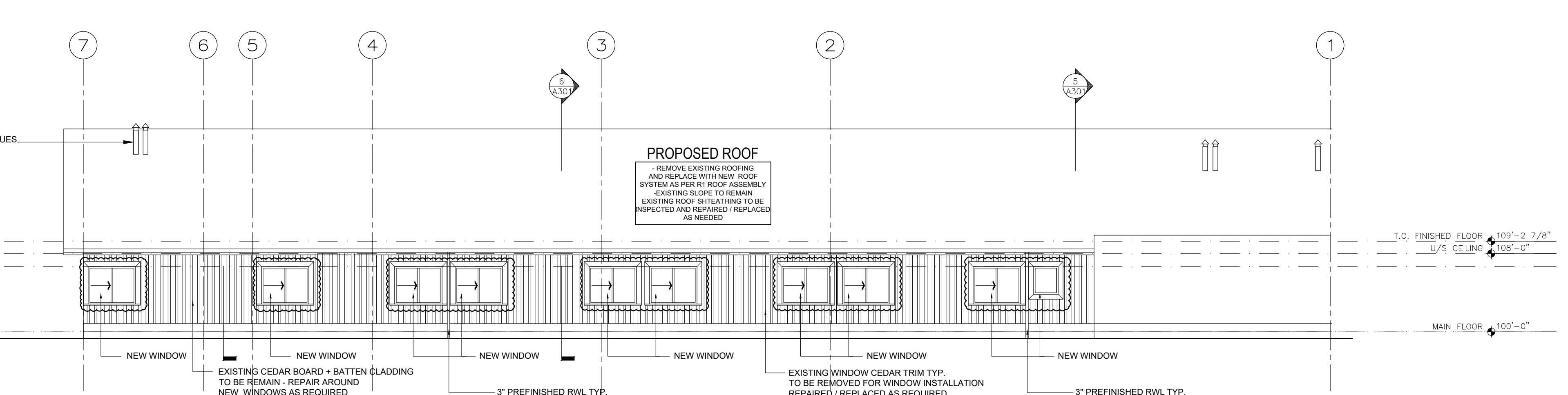
**1 NORTH ELEVATION**  
SCALE: 1/8"=1'-0"



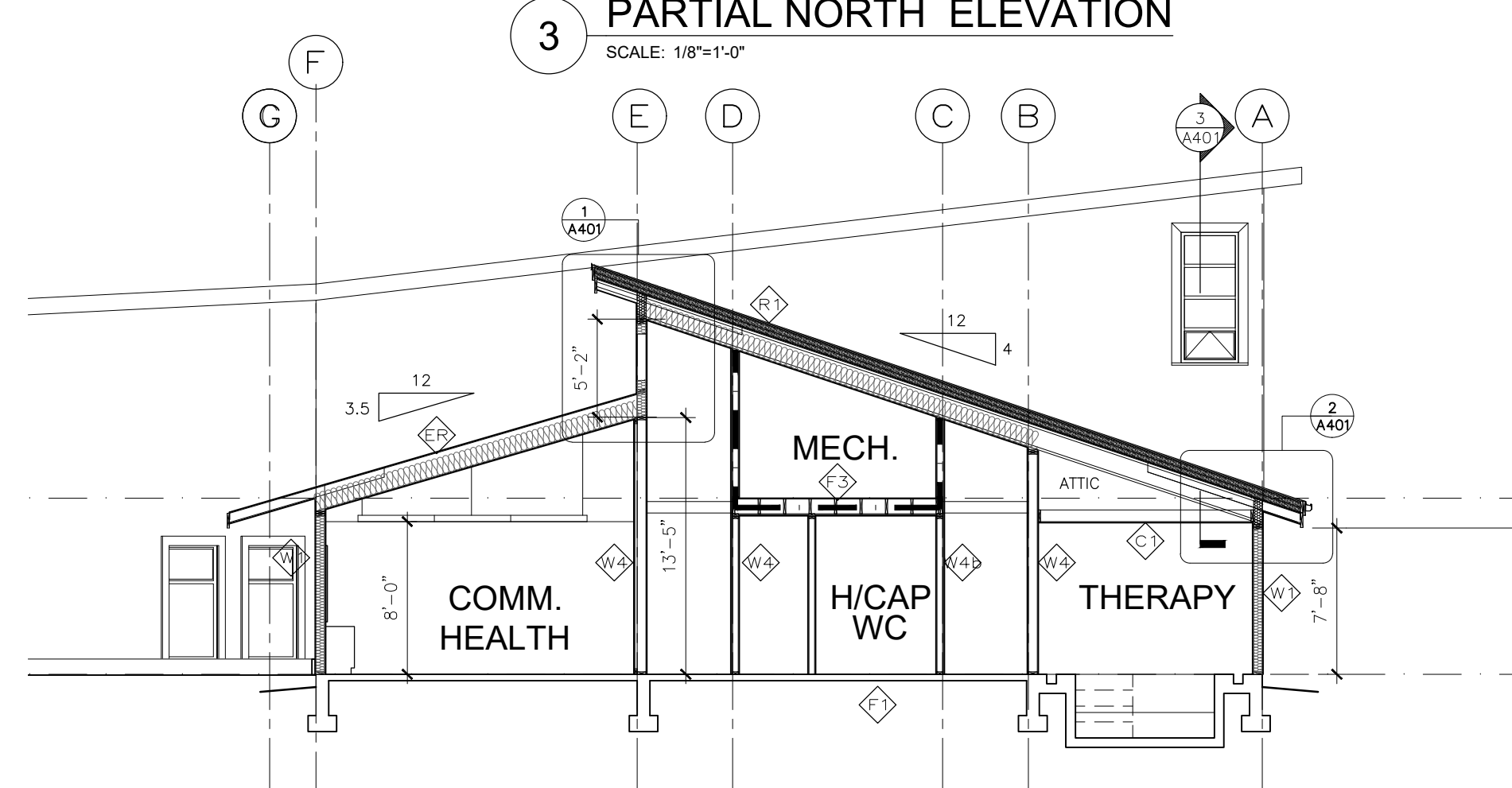
**2 EAST ELEVATION**  
SCALE: 1/8"=1'-0"



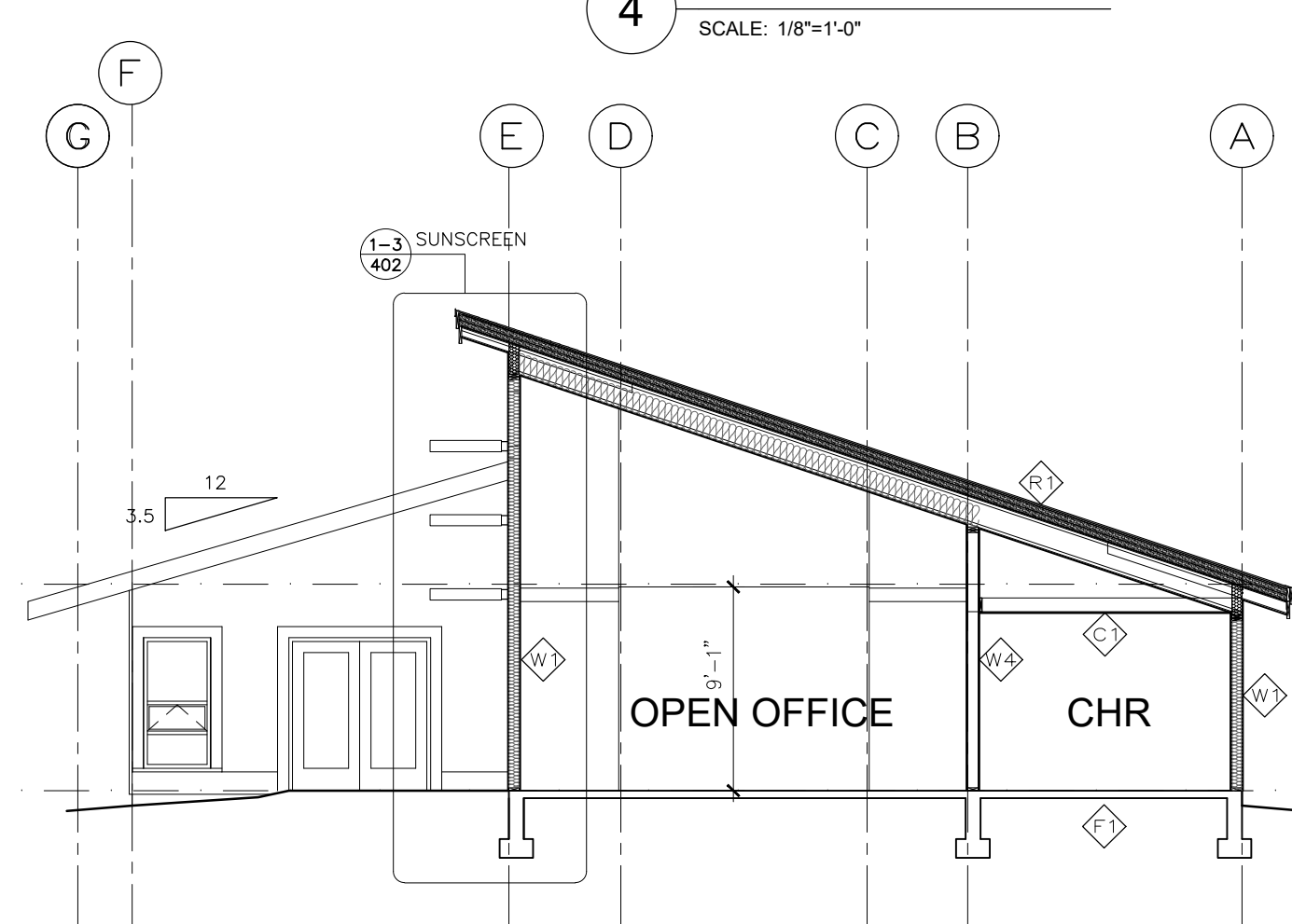
**3 PARTIAL NORTH ELEVATION**  
SCALE: 1/8"=1'-0"



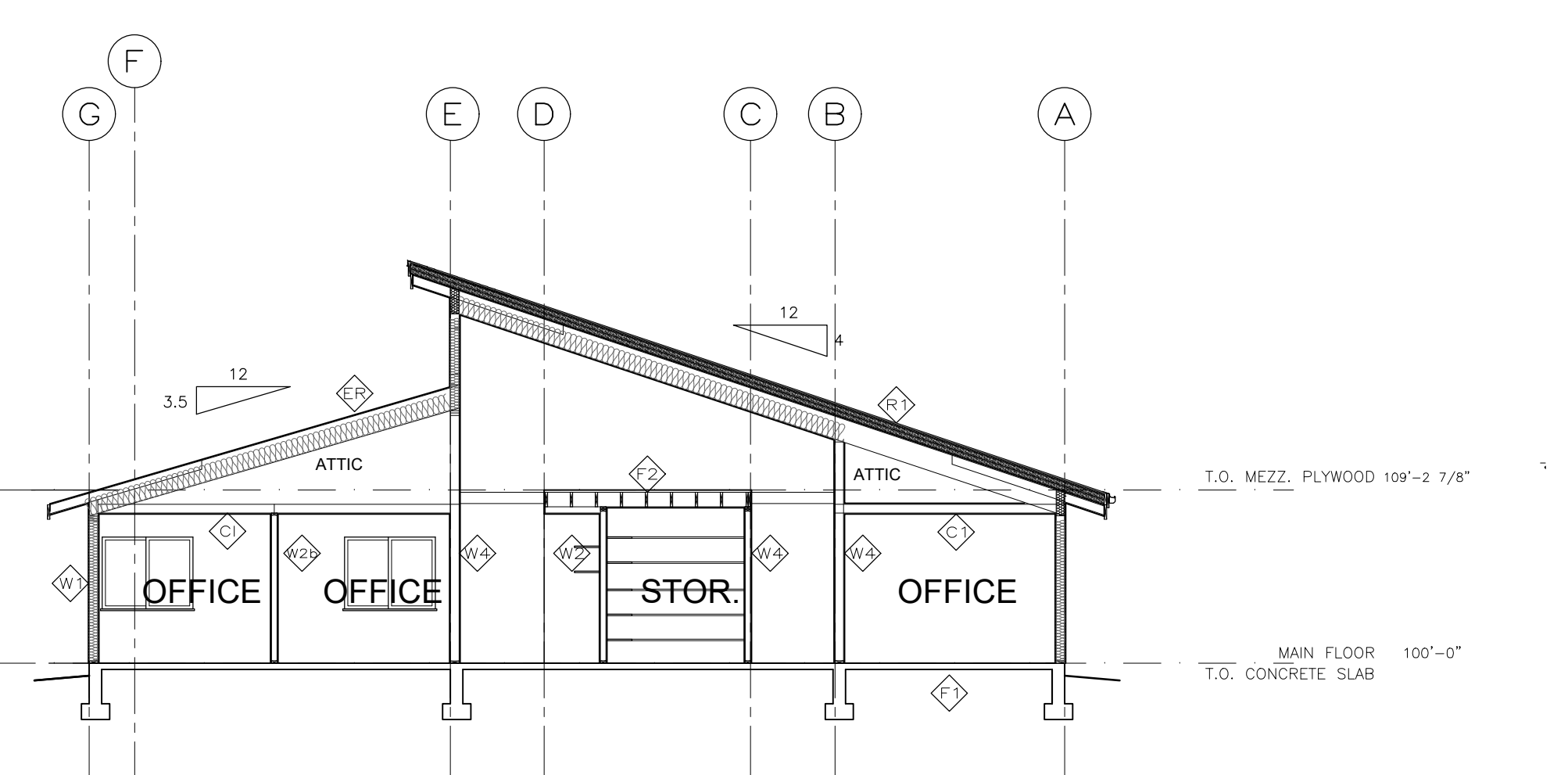
**4 WEST ELEVATION**  
SCALE: 1/8"=1'-0"



**5 SECTION**  
SCALE: 1/8"=1'-0"



**6 SECTION**  
SCALE: 1/8"=1'-0"



**7 SECTION**  
SCALE: 1/8"=1'-0"

