



Transmittal – Shop Drawings

To:	Stantec Architecture Ltd.	From:	Brenda
Attn:	E. Leclerc; E. Muho; D. Richards	Project:	UHN -Prince George-Pharmacy NAPRA Upgrades
CC:	R. Roy; D. Webster; D. Selinger	Phone:	
Via:	Email	Date:	June 20, 2024

Please find attached for your review:

SD#26-Lab Casework & Worktops

Best regards,

Project Administration

VECTOR PROJECTS GROUP LTD.
 Documents are reviewed for general conformance
 Only. Subcontractor / supplier is responsible for
 ERRORS, OMISSIONS and DISCREPANCIES.

REVIEWED: # SD#26

REVIEWED AS NOTED

REJECTED DUE DATE _____

DATE June 20, 2024 PER: [Signature]

STANTEC
 PROJECT # 144320228
 This review by Stantec is for general
 conformance with the design concept of
 Stantec's design of the:
 Architectural Electrical
 Structural Other
 Mechanical



components) only and does not mean that Stantec has verified or approves the shop drawing(s). The Contractor remains solely responsible for the shop drawing(s) and this review by Stantec does not relieve the Contractor of the Contractor's responsibility for errors or omissions in the shop drawing(s) or for meeting all requirements of the contract documents. This review does not mean that Stantec approves the detailed design inherent in the shop drawing, responsibility for which shall remain with the Contractor submitting same, nor does this review mean that Stantec accepts any deviation of the shop drawing(s) from the contract documents. The Contractor is responsible for confirming all dimensions and correlating them at the job site, for all construction means, methods and techniques, and for coordination of construction work of all trades, including coordination of all shop drawings.

- REVIEWED
- REVIEWED, AS NOTED
- REVISE AND RESUBMIT
- NOT REVIEWED

DATE 2024-06-25
 BY DaRichards

Vector Projects Group Ltd
 #101-1433 St. Paul Street, Kelowna BC V1Y 2E4
 TELE #: 250-763-1013 Fax #: 250-763-0734 Email: assistant@vpg.ca

UNIVERSITY HOSPITAL OF NORTHERN BC

NAPRA PHARMACY RENOVATION

SHOP DRAWING SUBMITTAL:
LABORATORY CASEWORK & WORKTOPS

SUBMITTAL DATE: JUNE 19 2024

DO NOT SCALE DRAWING

SELMAR LAB LANGLEY, B.C. PHONE: 604-533-9432	PROJECT: UHNBC NAPRA PHARMACY	DRAWING: COVER PAGE		Project No. J24435	DWG. No. CP	REV. —
	DATE: JUNE 2024	SCALE: NTS	DRAWN BY: SM			

UHNBC NAPRA PHARMACY RENOVATION

1475 EDMONTON STREET, PRINCE GEORGE BC V2M 1S2

GENERAL PROJECT NOTES:

- SCOPE OF WORK: SUPPLY AND SET UP INSTALLATION OF NEW LAB CASEWORK AND WORKTOPS ONLY
- ALL LAB CASEWORK IS MANUFACTURED BY MOTT MANUFACTURING
- 3 YEAR WARRANTY ON ALL PRODUCT - SEE STANDARD WARRANTY TERMS..
- GENERAL CONTRACTOR TO SUPPLY AND INSTALL $\frac{3}{4}$ " THICK PLYWOOD BACKING AS REQUIRED - SEE BACKING DRAWINGS 105 & 106
- GENERAL CONTRACTOR TO PROVIDE CONFIRMED SITE DIMENSIONS AS REQUIRED
- ALL LAB CASEWORK IS TO BE INSTALLED PRIOR TO FLOORING (PER ADDENDUM 2)
 - NOTE: GAP WILL BE PRESENT BETWEEN FLOOR AND BOTTOM OF CABINET ONCE LEVELLED IN PLACE. DIMENSION OF GAP WILL VARY DEPENDANT ON LEVEL OF FLOOR.
- ELEVATOR, OR ALTERNATE METHOD OF HOISTING, IS TO BE PROVIDED AS REQUIRED AT NO EXTRA COST TO SELMAR LAB. HOISTING TO BE LARGE ENOUGH TO ACCOMODATE LARGEST ITEM BEING SUPPLIED.

STAINLESS STEEL CASEWORK

- ALL UPPER AND LOWER CABINETS ARE MOTTLAB SIGMA SYSTEM STANDARD STAINLESS STEEL CABINETS
- ALL CABINETS ARE STANDARD INSET CONSTRUCTION. FLUSH OVERLAY CONSTRUCTION IS NOT INCLUDED.
- CABINETS CONSTRUCTION MATERIAL: TYPE 316 STAINLESS STEEL CONSTRUCTION
- UPPER UPPER WALL CABINETS ARE 14" DEEP.
- LOWER BASE CABINETS ARE 22" DEEP..
- ALL LOWER CABINETS HAVE AN INTEGRAL CABINET TOE KICK: 6"H X 3"D
- DOOR / DRAWER PULLS: OPTION 61 - 4" STAINLESS STEEL D PULL
- DOOR HINGES: OPTION 23 - STAINLESS STEEL 5 KNUCKLE HINGE
- CABINET LOCKS: NOT INCLUDED

STAINLESS STEEL WORKTOPS

- ALL STAINLESS STEEL WORKTOPS ARE 16 GAUGE TYPE 316 STAINLESS WITH PLYWOOD SUBSTRATE
- UNDERSIDE OF ALL WORKTOPS WILL BE SHEETED WITH STAINLESS STEEL
- ALL SPLASH ON STAINLESS STEEL WORKTOPS (WHERE NOTED) IS 6" HIGH X $\frac{3}{4}$ " THICK; INTEGRAL TO WORKTOP
- ALL FINISHED EDGES ARE SQUARE. MARINE EDGE IS NOT INCLUDED ON FINISHED EDGES OF WORKTOPS.
- "L" SHAPED WORKTOP ON ELEVATION 101 WILL HAVE A MECHANICAL SEAM.
 - SEAM ON WORKTOP WILL NOT BE WELDED.

THE FOLLOWING ITEMS ARE NOT INCLUDED:

- SEISMIC ENGINEER LETTER OF ASSURANCE
- ANY PLUMBING, HVAC, ELECTRICAL COMPONENTS NOT SPECIFICALLY LISTED IN SHOP DRAWINGS
- CONNECTION OF ANY ELECTRICAL, HVAC, PLUMBING, ETC COMPONENTS
- SCANNING / XRAY OF FLOOR (IF REQUIRED)
- MANUAL HOISTING OF PRODUCT BETWEEN FLOORS (IF REQUIRED)
- ANY PRODUCT OR WORK RELATED TO ITEMS LISTED IN EQUIPMENT SCHEDULE OR IN THE FURNITURE & ACCESSORIES SCHEDULE
- SITE WELDING OF ANY STAINLESS STEEL PRODUCT
- LOCKS ON ANY CABINETS (PER ADDENDUM 2)
- MARINE EDGE ON ANY WORKTOPS (PER ADDENDUM 2)
- CASTERS ON ANY CABINETS (PER ADDENDUM 2)
- ANY WORK RELATED TO EXISTING PRODUCT, SLAT WALL, CARTS, PASS-THRUS, FUMEHOODS, BSCS, ETC
- ANY FINISH BASE / COVED BASE IS NOT INCLUDED

DO NOT SCALE DRAWING

SELMAR LAB LANGLEY, B.C. PHONE: 604-533-9432	PROJECT: UHNBC NAPRA PHARMACY	DRAWING: PROJECT NOTES	Project No. J24435	DWG. No. 000	REV. -
	DATE: JUNE 2024	SCALE: NTS	DRAWN BY: SM		

UHNBC NAPRA PHARMACY RENOVATION LABORATORY CASEWORK & WORKTOPS

GENERAL PROJECT NOTES CONTINUED:

CONSULTANT TO ADVISE ON THE FOLLOWING:

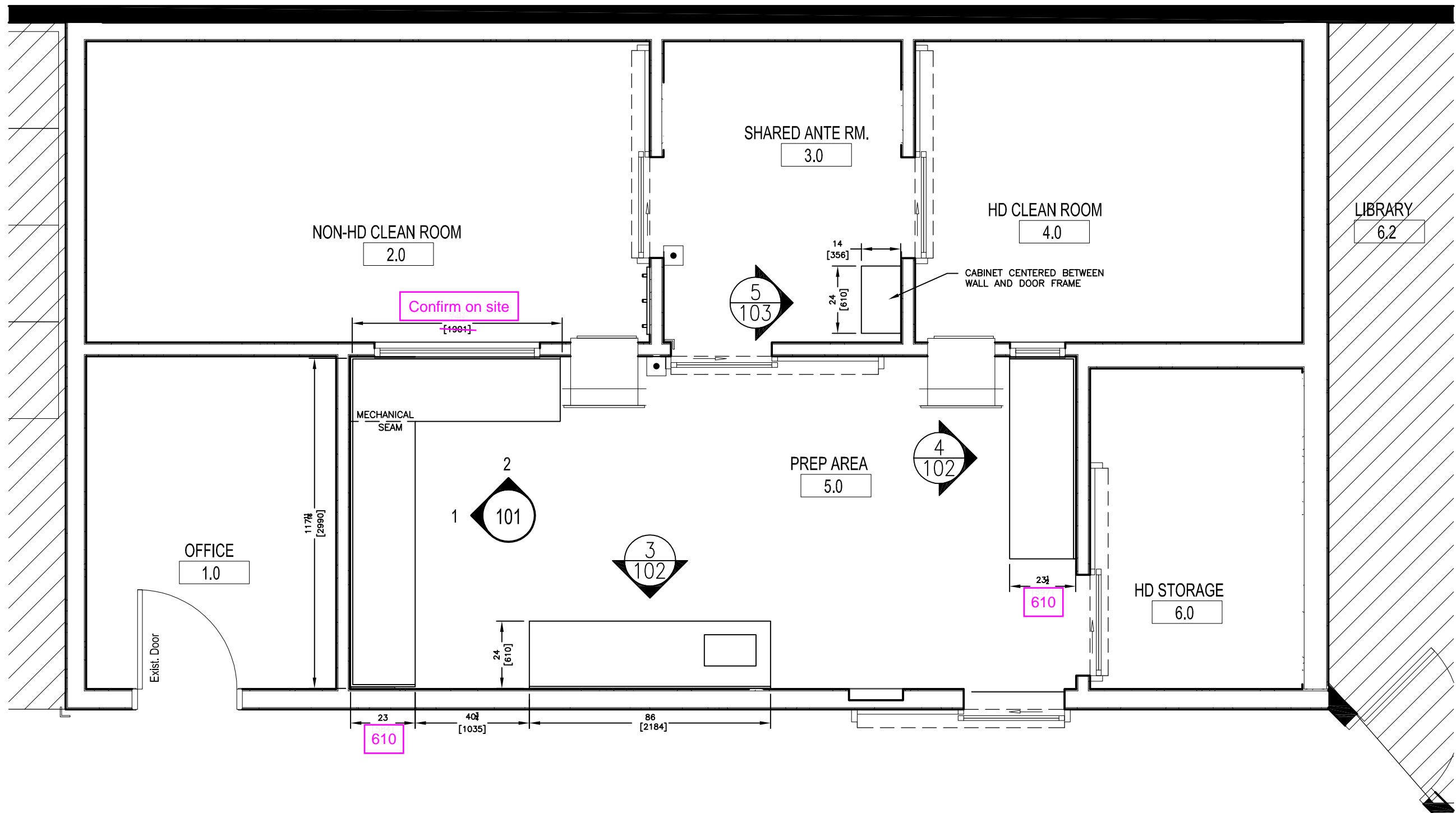
1. CONFIRM SPLASH HEIGHT FOR EACH LOCATION. DRAWINGS AND SPECS LIST DIFFERENT HEIGHTS. 150mm
2. CONFIRM TOE KICK HEIGHT FOR EACH LOCATION – ARE ALL TOE KICKS TO BE 6” HIGH Correct, all toe kicks are 6" high (150mm)
3. CONFIRM WORKTOP DEPTHS ARE CORRECT AS SHOWN. DEPTHS VARY BY LOCATION. All counters to be 610mm
4. ADVISE SINK DIMENSIONS FOR THE SINK LOCATED ON ELEVATION 102 The sink is SK-2. Refer to the mechanical drawings and the specification section 22 40 00 page 2
5. CONFIRM DOOR / DRAWER HANDLE IS ACCEPTABLE AS SHOWN (STAINLESS D HANDLE). SPEC CALLS FOR FLUSH ALUMINIUM PULL. Stained Steel D Handle is acceptable.
6. CONFIRM THAT PLYWOOD SUBSTRATE IS ACCEPTABLE FOR WORKTOPS. UNDERSIDE OF WORKTOP WILL BE SHEETED WITH STAINLESS STEEL. This is acceptable.

GENERAL CONTRACTOR TO ADVISE ON THE FOLLOWING:

1. CONFIRM FINAL FIELD DIMENSIONS OF ROOMS PRIOR TO PRODUCTION OF WORKTOPS
2. LOCATION AND DIMENSION OF ANY REQUIRED PENETRATIONS IN WORKTOPS (FOR FIXTURES, GROMMETS, ETC). THESE ARE COMPLETED AT FACTORY.

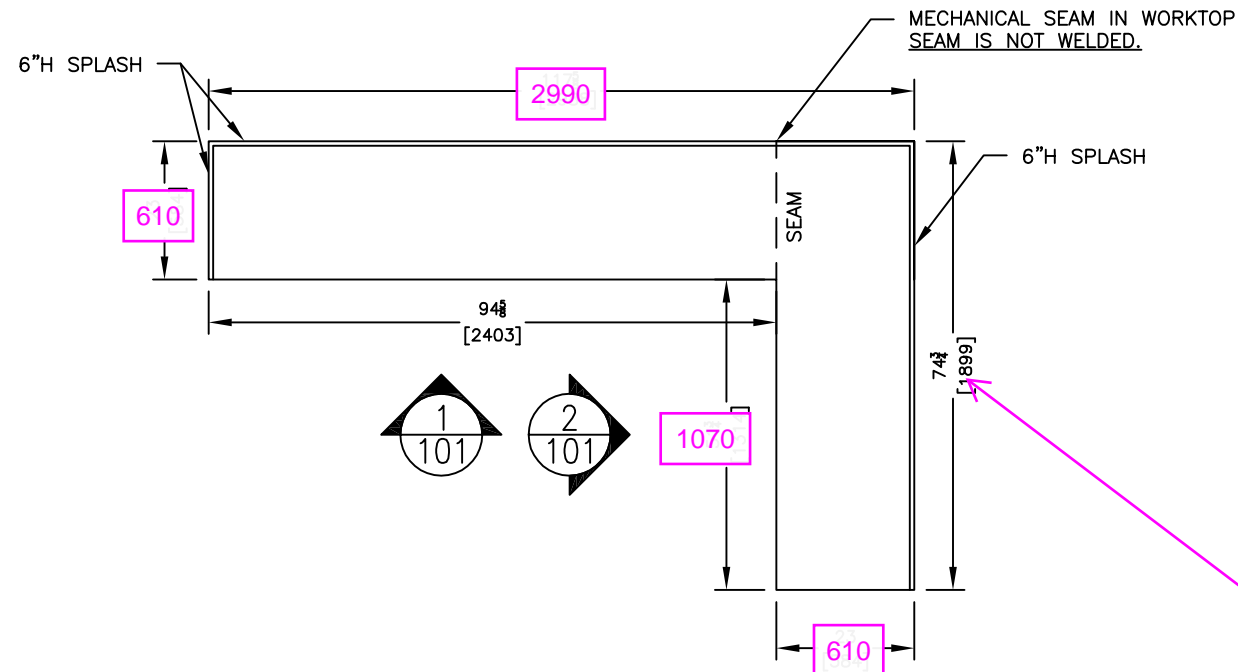
DO NOT SCALE DRAWING

SELMAR LAB LANGLEY, B.C. PHONE: 604-533-9432	PROJECT:	DRAWING:	Project No.	DWG. No.	REV.
	UHNBC NAPRA PHARMACY	PROJECT NOTES	J24435	001	—
	DATE: JUNE 2024	SCALE: NTS	DRAWN BY: SM		



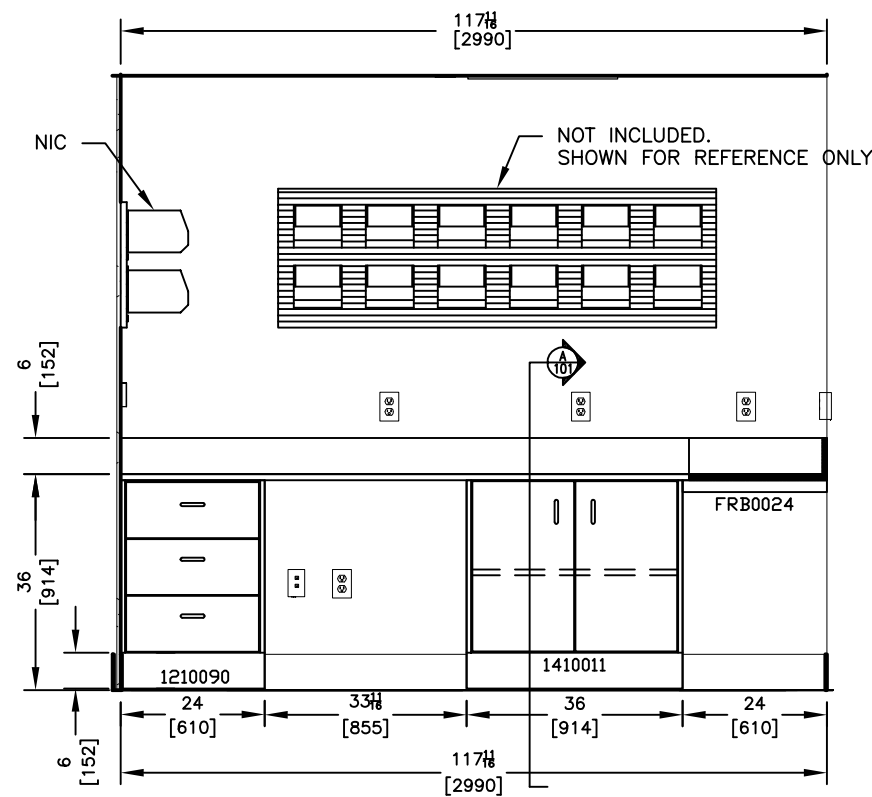
DO NOT SCALE DRAWING

SELMAR LAB LANGLEY, B.C. PHONE: 604-533-9432	PROJECT: UHNBC NAPRA PHARMACY	DRAWING: PLAN VIEW LAYOUT	Project No. J24435	DWG. No. 100	REV. —
	DATE: JUNE 2024	SCALE: 5/16" = 1'-0"	DRAWN BY: SM		

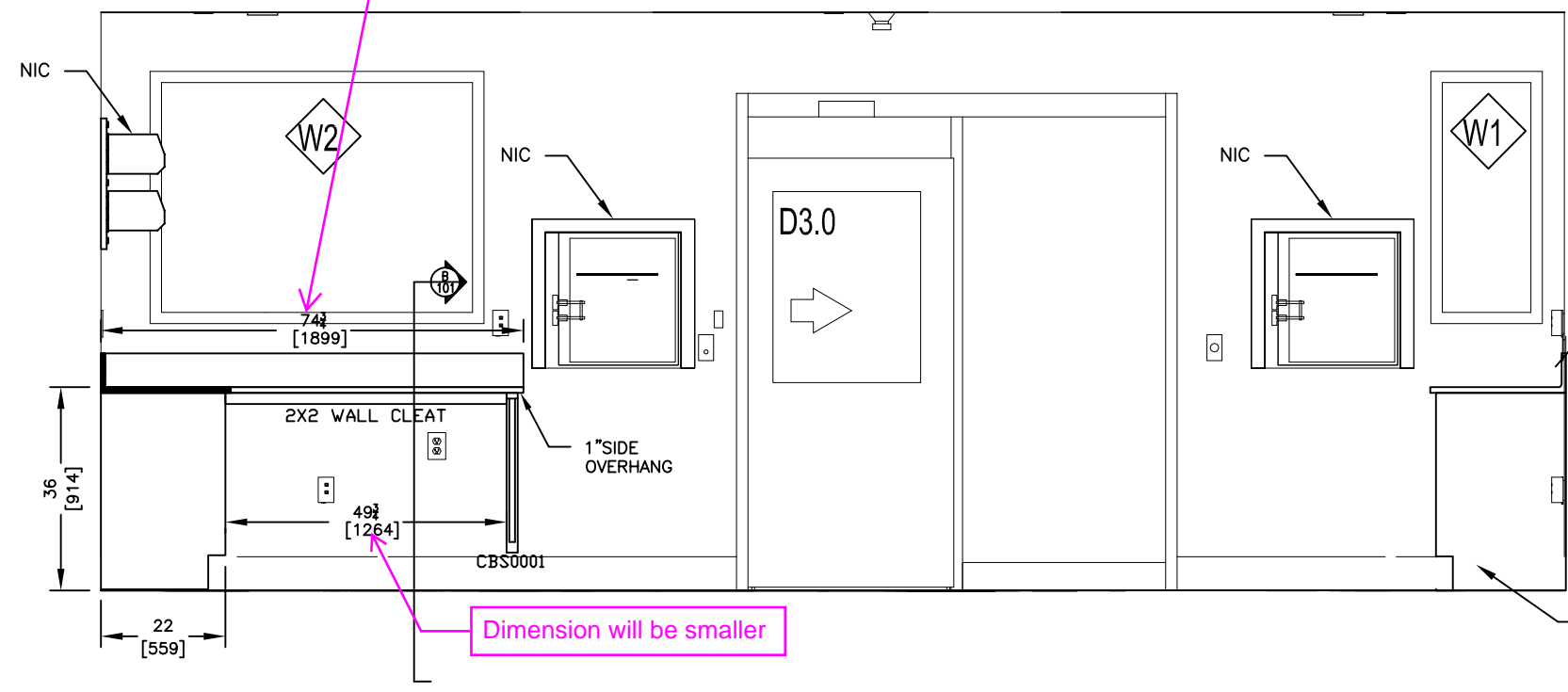


Site verify all dimensions between walls

The length of this section has changed due to the size of the pass thru unit. Confirm length with the site conditions



1/101 PREP AREA 5.0 (AE201 / 4) "L" SHAPED WALL ELEVATION



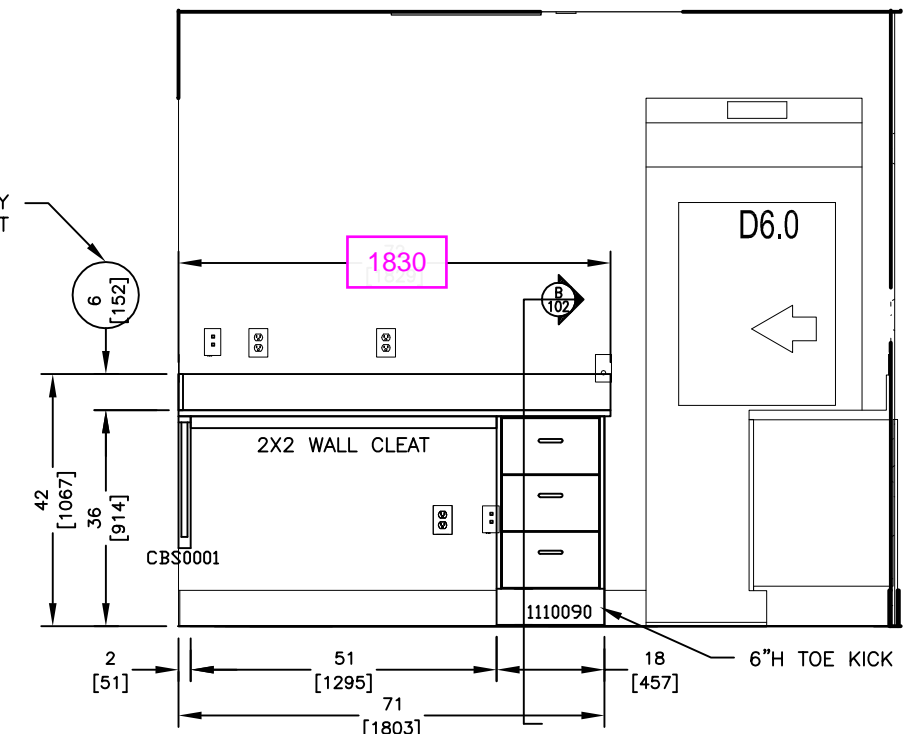
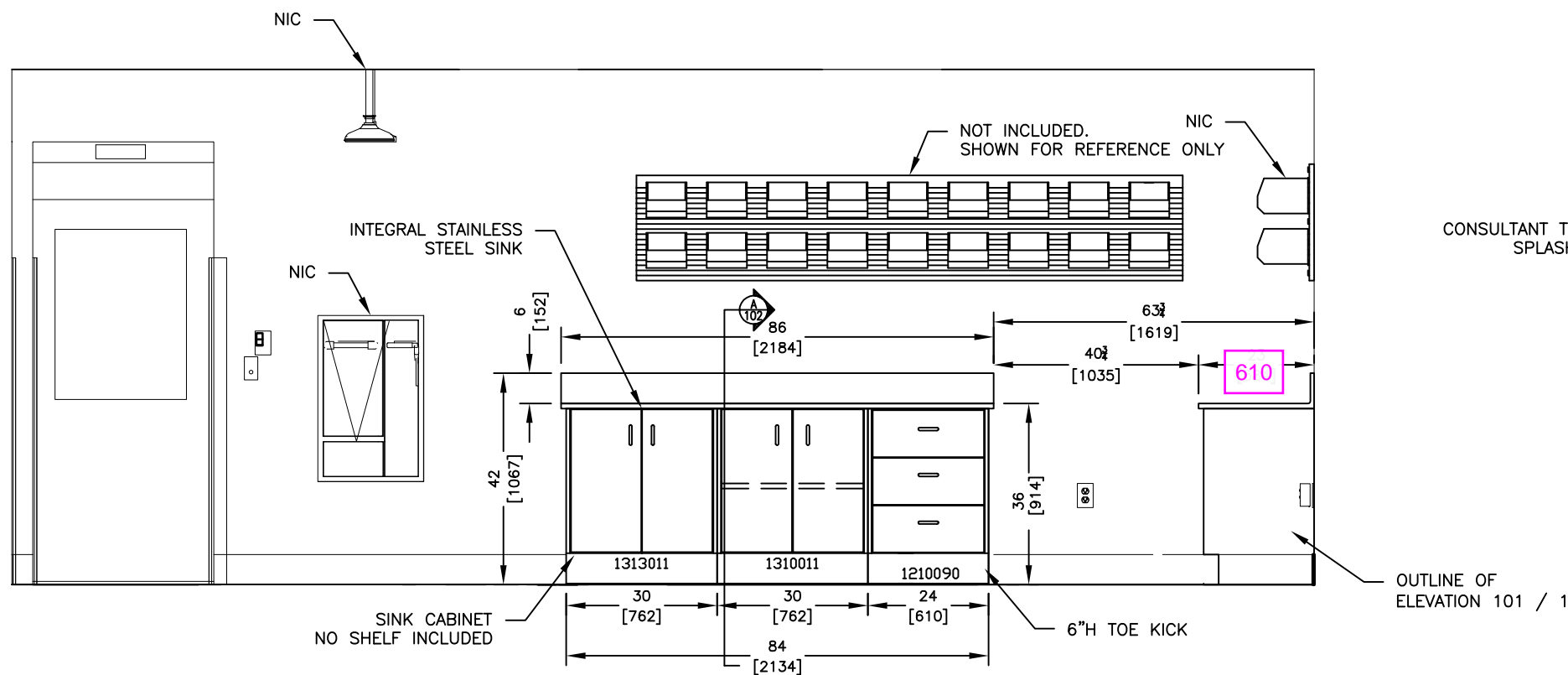
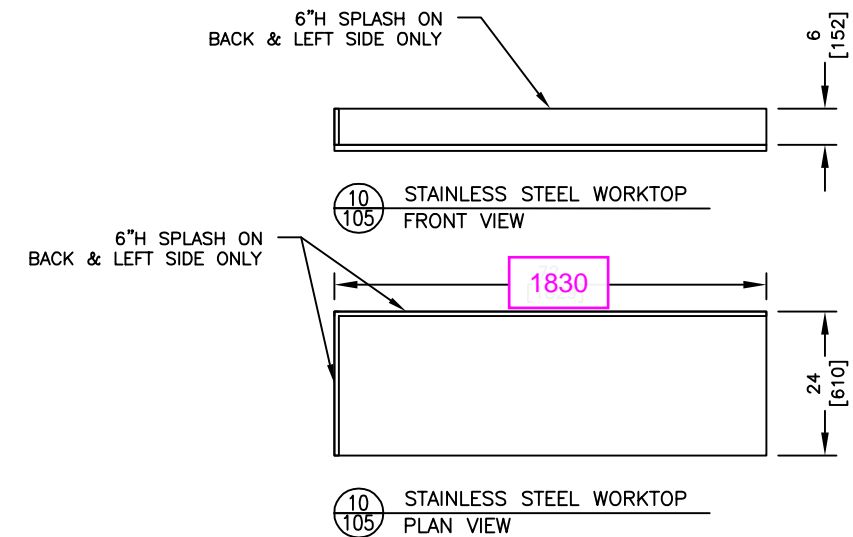
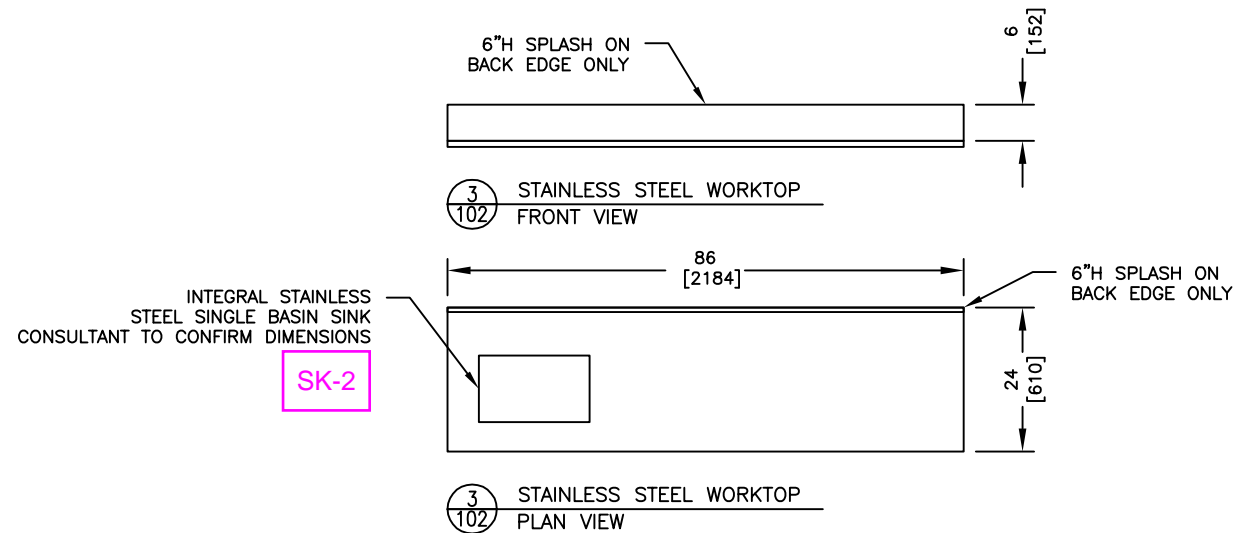
Dimension will be smaller

END OUTLINE OF ELEVATION 102 / 4

2/101 PREP AREA 5.0 (AE201 / 1) "L" SHAPED WALL ELEVATION

DO NOT SCALE DRAWING

SELMAR LAB LANGLEY, B.C. PHONE: 604-533-9432	PROJECT:	DRAWING:	Project No.	DWG. No.	REV.
	UHNBC NAPRA PHARMACY	INTERIOR ELEVATIONS	J24435	101	—
DATE: JUNE 2024	SCALE: 3/8" = 1'-0"	DRAWN BY: SM			



3 102 PREP AREA 5.0 (AE201 / 3) WALL ELEVATION WITH SINK

4 102 PREP AREA 5.0 (AE201 / 2) WALL ELEVATION

DO NOT SCALE DRAWING

SELMAR LAB
LANGLEY, B.C.
PHONE: 604-533-9432

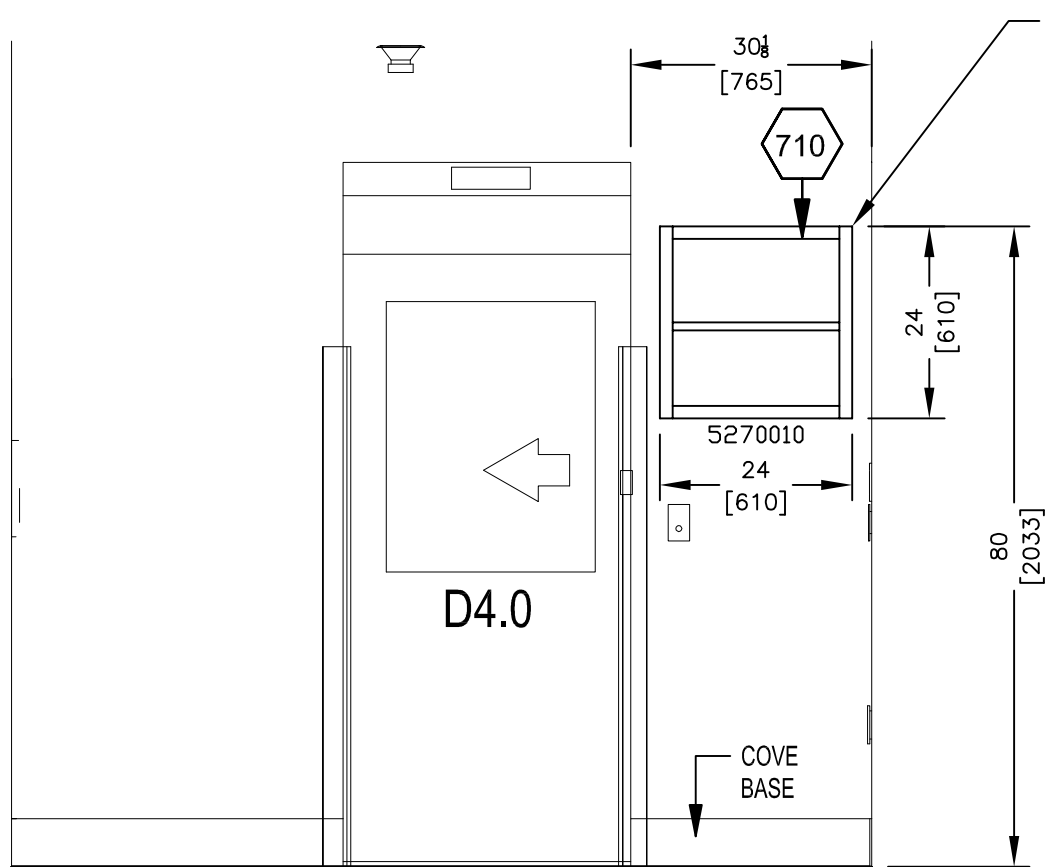
PROJECT:
UHNBC NAPRA PHARMACY
DATE: JUNE 2024

DRAWING:
INTERIOR ELEVATIONS
SCALE: 3/8" = 1'-0" DRAWN BY: SM

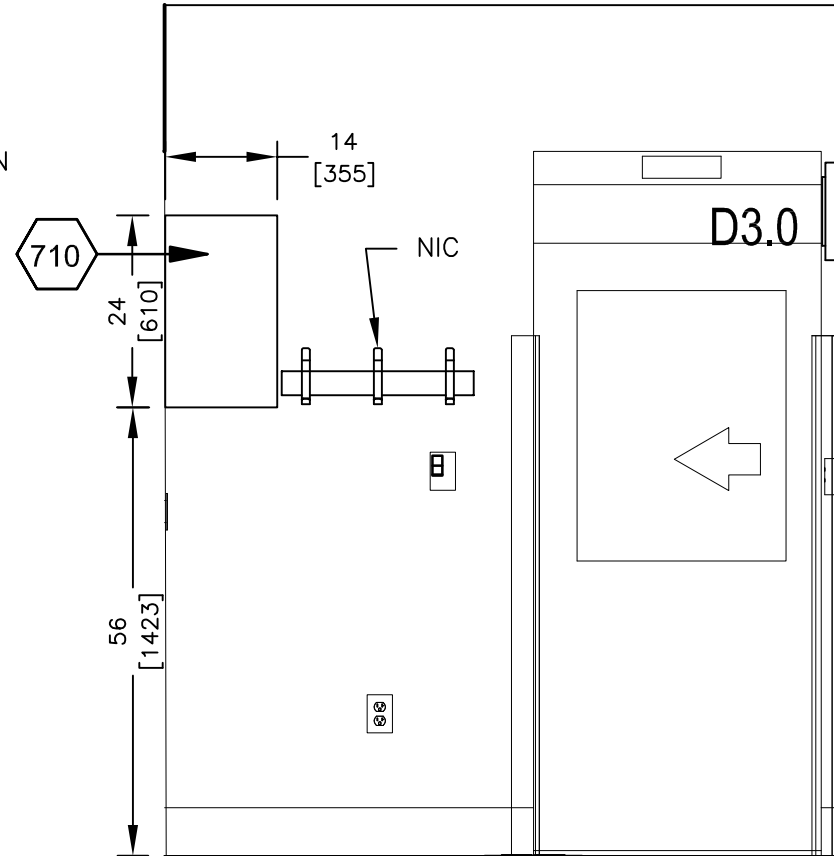
Project No.
J24435

DWG. No.
102

REV.
-



OPEN STORAGE CABINET
 QTY 1: HEIGHT ADJUSTABLE SHELF
 NO DOORS
 24"W X 24"H X 14" DEEP
 CABINET TO BE CENTERED BETWEEN
 DOOR AND ADJACENT WALL

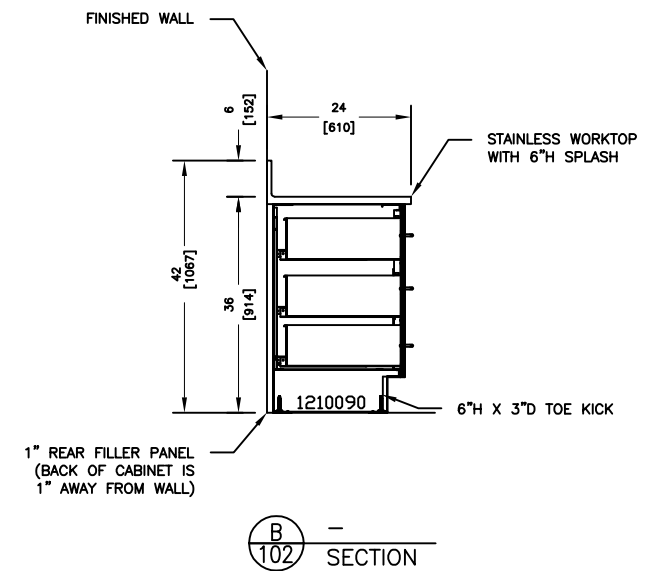
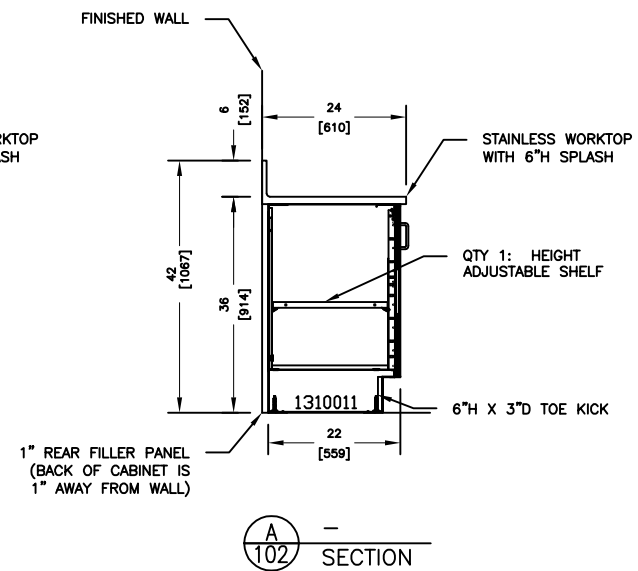
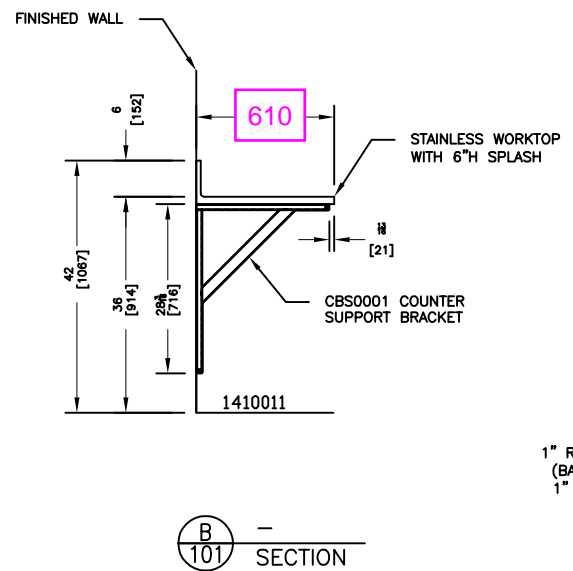
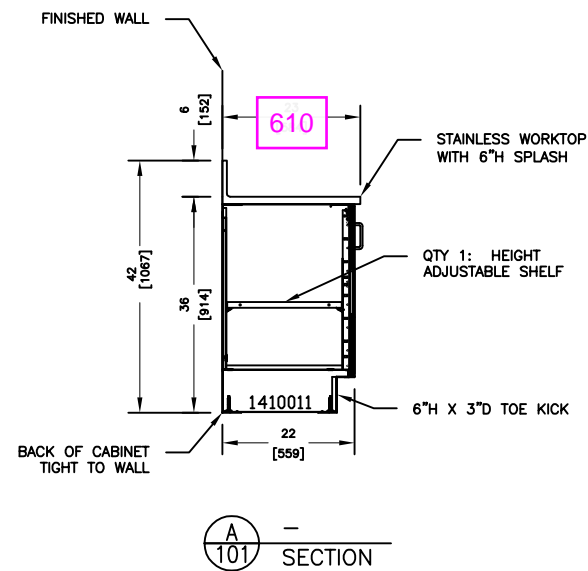


5 SHARED ANTE RM 3.0 (AE202 / 4)
 103 UPPER WALL CABINET – FRONT VIEW

5A SHARED ANTE RM 3.0 (AE202 / 4)
 103 UPPER WALL CABINET – SIDE VIEW

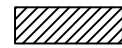
DO NOT SCALE DRAWING

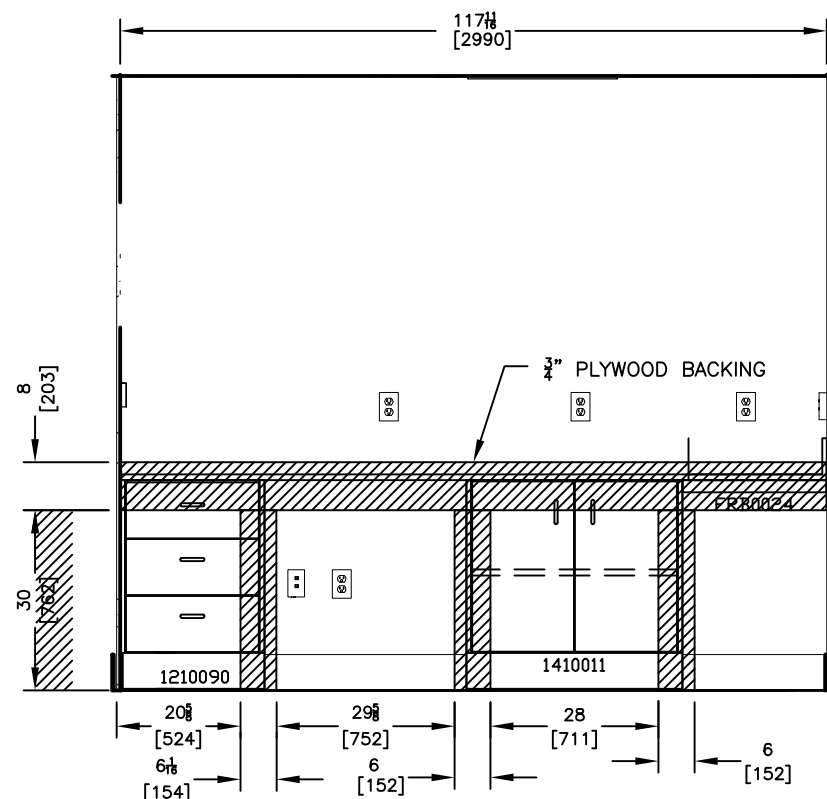
SELMAR LAB LANGLEY, B.C. PHONE: 604-533-9432	PROJECT: UHNBC NAPRA PHARMACY	DRAWING: INTERIOR ELEVATION RM 3.0	Project No. J24435	DWG. No. 103	REV. —
	DATE: JUNE 2024	SCALE: 1/2" = 1'-0"	DRAWN BY: SM		



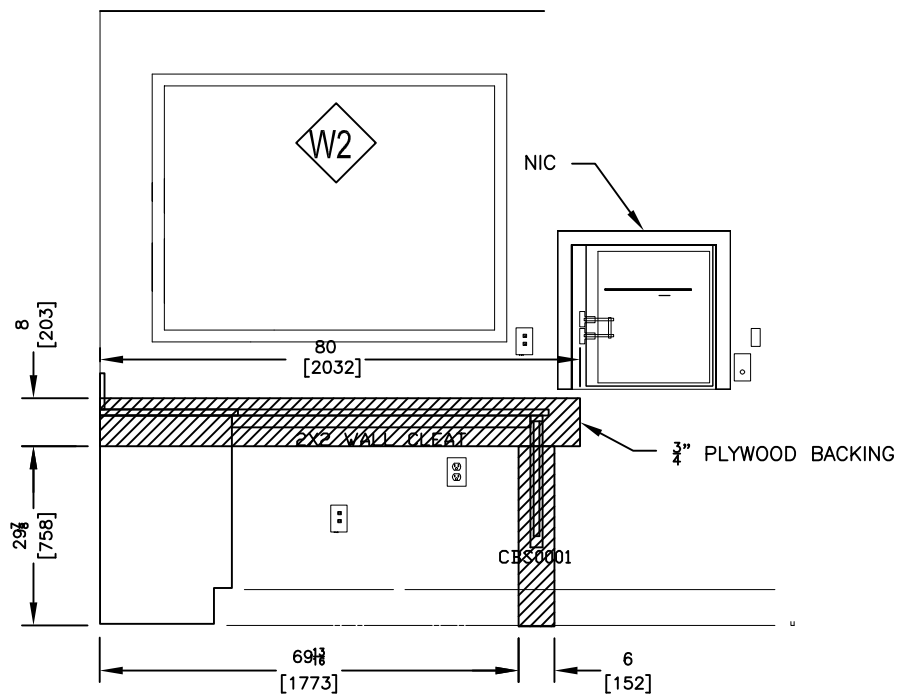
DO NOT SCALE DRAWING

SELMAR LAB LANGLEY, B.C. PHONE: 604-533-9432	PROJECT: UHNBC NAPRA PHARMACY	DRAWING: CASEWORK SECTION DETAILS	Project No. J24435	DWG. No. 104	REV. -
	DATE: JUNE 2024	SCALE: 3/8" = 1'-0"	DRAWN BY: SM		

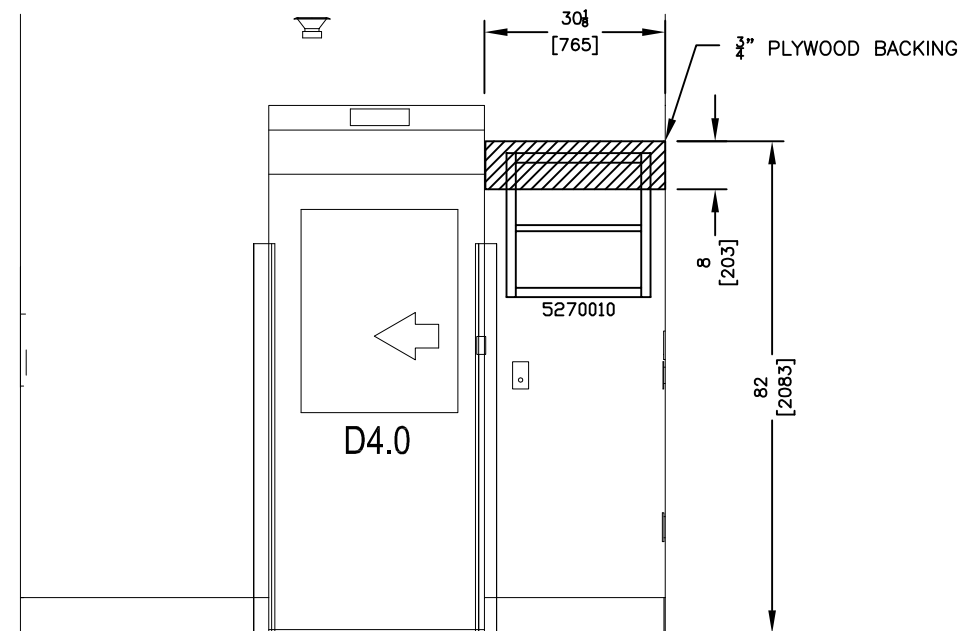
 DENOTES BACKING LOCATION
($\frac{3}{4}$ " PLYWOOD TO BE USED)



1 PREP AREA 5.0 (AE201 / 4)
101 BACKING REQUIREMENTS



2 PREP AREA 5.0 (AE201 / 1)
101 BACKING REQUIREMENTS



5 SHARED ANTE RM 3.0 (AE202 / 4)
103 BACKING REQUIREMENTS

DO NOT SCALE DRAWING

SELMAR LAB
LANGLEY, B.C.
PHONE: 604-533-9432

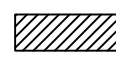
PROJECT:
UHNBC NAPRA PHARMACY
DATE: JUNE 2024

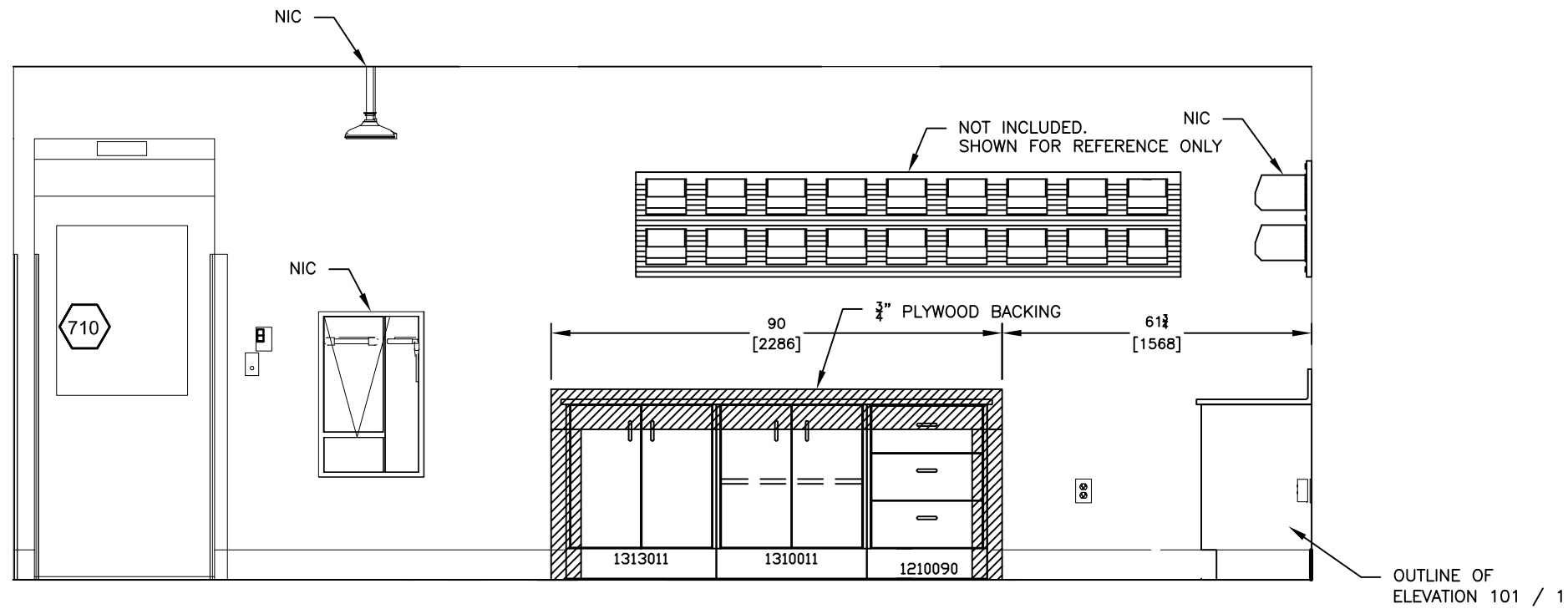
DRAWING:
BACKING DETAILS
SCALE: $\frac{3}{8}$ " = 1'-0" DRAWN BY: SM

Project No.
J24435

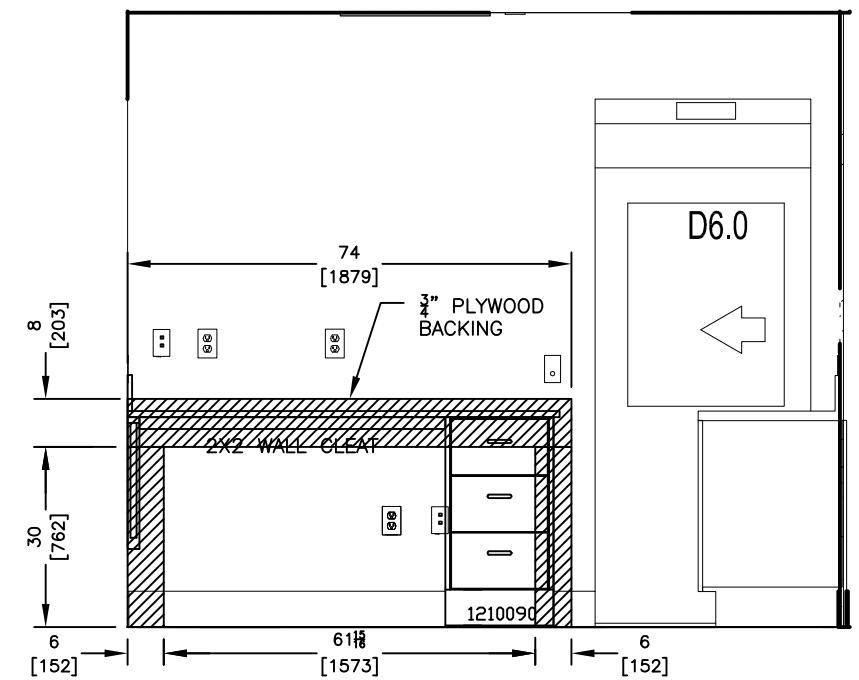
DWG. No.
105

REV.
—

 DENOTES BACKING LOCATION
 (3/4" PLYWOOD TO BE USED)



3 PREP AREA 5.0 (AE201 / 3)
 102 BACKING REQUIREMENTS

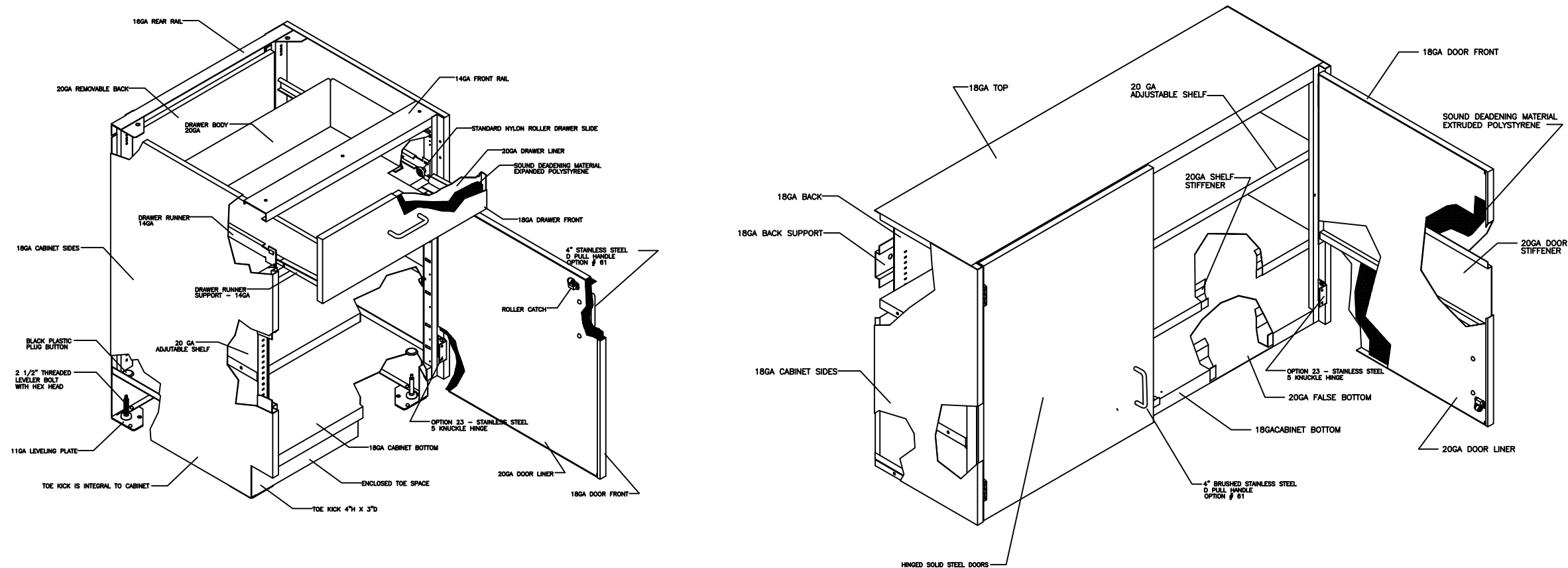


4 PREP AREA 5.0 (AE201 / 2)
 102 BACKING REQUIREMENTS

DO NOT SCALE DRAWING

SELMAR LAB LANGLEY, B.C. PHONE: 604-533-9432	PROJECT: UHNBC NAPRA PHARMACY	DRAWING: BACKING DETAILS	Project No. J24435	DWG. No. 106	REV. —
	DATE: JUNE 2024	SCALE: 3/8" = 1'-0"	DRAWN BY: SM		

CABINET ILLUSTRATIONS ARE TO SHOW STANDARD CONSTRUCTION MATERIALS / TECHNIQUES. NOT ALL FEATURES ARE INCLUDED ON THIS PROJECT. REFER TO SHOP DRAWINGS FOR PROJECT SPECIFIC DETAILS



DO NOT SCALE DRAWING

SELMAR LAB LANGLEY, B.C. PHONE: 604-533-9432	PROJECT: UHNBC NAPRA PHARMACY	DRAWING: GENERIC CABINET DETAILS	Project No. J24435	DWG. No. 107	REV. —
	DATE: JUNE 2024	SCALE: NTS	DRAWN BY: SM		

STEEL CASEWORK
HANDLE & HINGE OPTIONS

Door/Drawer Pulls

**Available at an additional charge*

There are several different styles of door/drawer handles that are offered to suit specific customer requirements. Please use the option numbers below to specify the handle of your choice.



OPTION 60
4" Black Nylon Pull



***OPTION 61**
4" Stainless Steel Wire Pull
OPTION 68
4" Aluminum Wire Pull



OPTION 62 - Standard
4" Brushed Aluminum Pull



OPTION 63
4" Chrome Pull



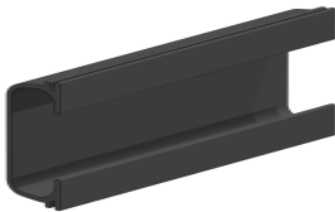
OPTION 64
4" Black Flush ABS Pull



OPTION 65
4" Flush Aluminum Pull
For Sliding Doors



OPTION 65
4" Flush Aluminum Pull
For Doors and Drawers



OPTION 66
4" Black Flush PVC Pull
For Sliding Doors



OPTION 66
4" Black Flush PVC Pull
For Doors and Drawers



***OPTION 67**
Flush Full Width Pull

Door Hinges

**Available at an additional charge*

Mott cabinets come with durable 14 gauge five knuckle hinges. The hinges are available in black powder coat, chrome plated or stainless steel finishes. Please use the option numbers below to specify the hinge of your choice.



OPTION 21 - Standard
Chrome Hinge

OPTION 22
Black Hinge

***OPTION 23**
Stainless Steel Hinge



***OPTION 24**
Overlay Hinge