

Addendum No: 2
 Date: April 29, 2024
 Owner: Northern Health
 Stantec # 144320012

This addendum is to be read with and constitutes part of the tender document.

0.0 GENERAL

Not in use

1.0 SPECIFICATIONS

1.1 Remove No2. Unforeseen Fire Alarm and smoke/Fire Dampers \$ 24,000.00 from Addendum 1

2.0 DRAWINGS

2.1 Drawing M002:

ADD: Add E2 (E.H.Price, 630 Aluminum exhaust grille) to air terminal schedule as clouded in below.
 Revise: General note A in air terminal schedule to *“Confirm with architectural ceiling plan for air terminal sizes if they are metric or imperial conversion.”*

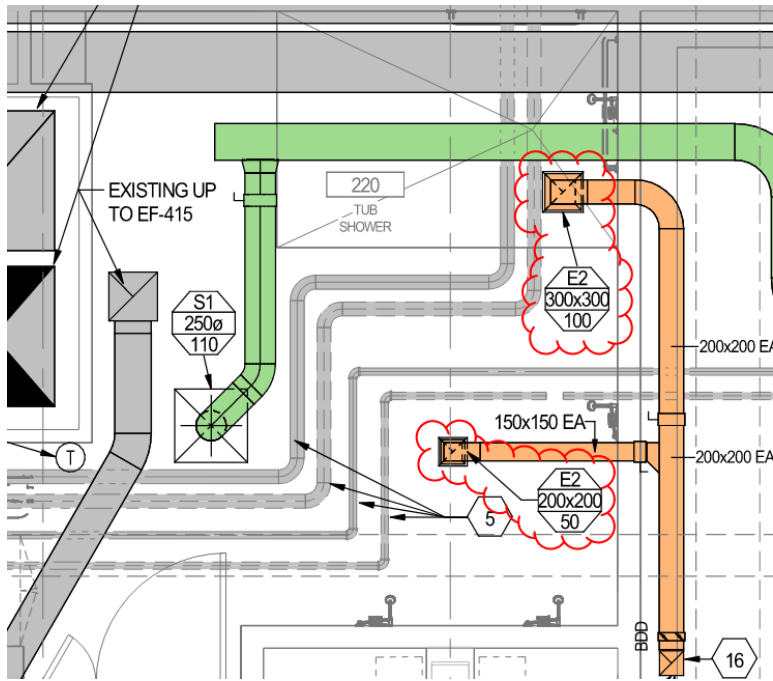
AIR TERMINALS												
NOTATION	MANUFACTURER	TYPE	MODEL NO	MATERIAL	BORDER	BLADE ORIENT.	NOM. SIZE	VOLUME DAMPER	MOUNTING FRAME	FASTENING	FINISH	NOTE
S1	E.H.PRICE	SUPPLY DIFFUSER	SPD	STEEL	SURFACE PLAQUE	N/A	600x600	N/A	T-BAR OR DRY WALL	N/A	B12	1
B1	E.H.PRICE	CEILING MOUNTED EXHAUST GRILLE	530	STEEL	TYPE F	TYPE L	REFER TO DWGS	N/A	T-BAR OR DRY WALL	TYPE A	B12	1,2
E2	E.H.PRICE	CEILING MOUNTED EXHAUST GRILLE	630	ALUMINUM	TYPE F	TYPE L	REFER TO DWGS	N/A	T-BAR OR DRY WALL	TYPE A	B13	1,2

NOTES:
 1. LOUVERED SUPPLY / EXHAUST GRILLE, 45°DEFLECTION, 19MM BLADE SPACING.
 2. REFER TO ARCHITECTURAL CEILING PLAN FOR CEILING TYPE, (T-BAR OR SURFACE MOUNT).

GENERAL NOTES:
 A. CONFIRM WITH ARCHITECTURAL CEILING PLAN FOR AIR TERMINAL SIZES IF THEY ARE METRIC OR IMPERIAL CONVERSION.
 B. COORDINATE WITH ARCHITECT THE REQUIRED BODER TYPE, END CAP AND FRAME PRIOR TO ORDERING

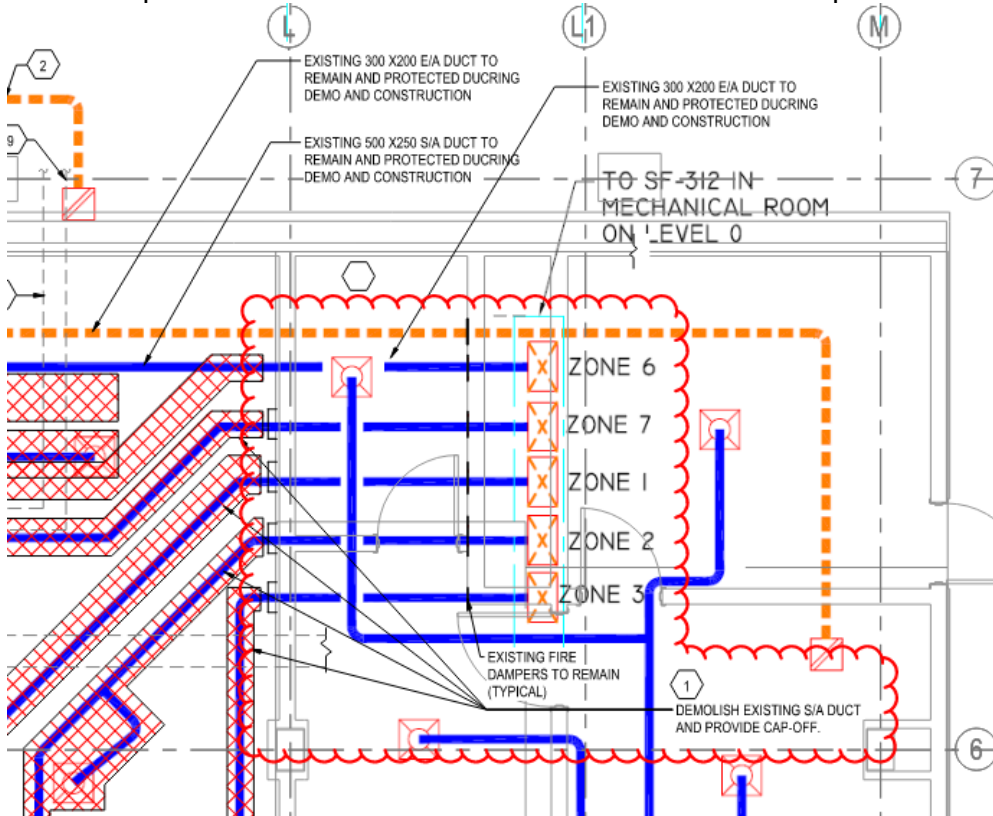
2.2 Drawing M200:

UPDATE: Revise exhaust grille in Tub/Shower room to type E2 (Aluminum 630 exhaust grille).



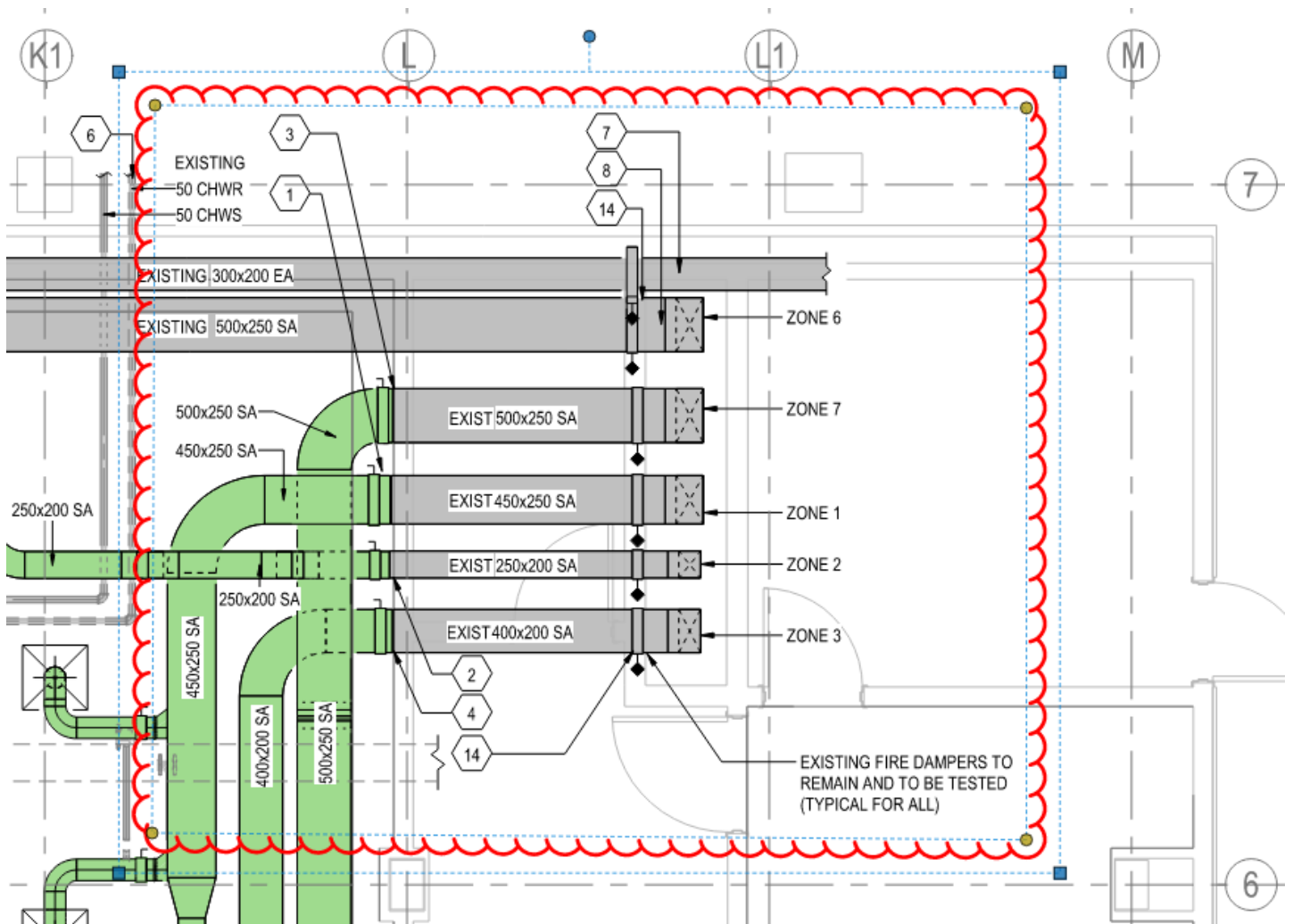
2.3 Drawing M101:

UPDATE: The existing supply air ducts on the right side of GL. L (Between GL. L and L1) to remain. Provide cap-off to the left of GL. L as shown clouded in below snip.



2.3 Drawing M200:

UPDATE: Connect new supply air ducts to the existing supply air ducts at GL. L as shown clouded in below snip. Revise Keynote 14 to “Existing fire dampers to be tested (typical)”.



15	NEW THERMOSTAT TO MATCH WITH EXISTING THERM...
14	EXISTING FIRE DAMPERS TO BE TESTED (TYPICAL)
15	CONTRIBUTOR TO MEASURE EXHAUST AIR IMP...

3.0 **CLARIFICATIONS**

Q: Please clarify that there is not stainless welded ducting only aluminum for shower/bath room, in the scope of work as there is nothing visibly seen to suggest otherwise. In the spec it has a generic document for welded stainless but the architectural and mechanical drawings do not indicate such exhaust ducting is shown.
 Section 23 31 00 2.9 .1 All exhaust ducts carrying moisture such as Dishwasher,

Cartwasher, Washer/Sanitizer. Exhaust duct from unit to discharge point.

.2 Duct sections containing duct mounted humidifiers.

.3 Where indicated on drawings.

A: Aluminum duct and grilles to be used for the exhaust system serving Tub/Shower room. Stainless steel duct is not required.

Q: For the hallway hoarding, what is the clearance that must be maintained between hoarding and the adjacent wall for foot and bed traffic?

A: Coordinate on site with FMO, as a min clearance should be 1600mm.

Q: Is there a specific location the negative air can vent out the building or will this be up to the contractor select?

A: This needs to be coordinated on site with FMO.

Q: Hydro tub relocation: Once the tubs are removed, are all the mechanical (valves) and electrical (plugs) expected to be removed and the walls and floors repaired?

A: Coordinated on site with FMO for patch and repair/ make good of the existing walls and floors. Area will be subject of renovation but until then can still be in use from the owner!

Q: If the flooring and walls are to be repaired, please provide a spec for the wall finish and flooring as it is a specialty product.

A: For existing walls and floors that required patch and repair products to match existing as close as possible. In the existing area where the tubs will be removed and relocated. Coordinate on site with FMO since the area is going to be renovated in the future.

Q: Can you please confirm if 100A 3 Pole spare breakers are available in Panels PB-40AC and PB-32AA? If not, please provide Cat# and Manufacturer of these boards to ensure correct sub feed breakers are quoted by suppliers.

A: Spare breaker is available. Refer to attached photos for info.



Stantec Architecture Ltd.

Eleonore Leclerc
Principal, Architect AIBC, SAA, OAA

Cell: 604 369-6753
Eleonore.Leclerc@stantec.com

END OF ADDENDUM #2