

Addendum No: 4  
Date: May 10, 2024  
Owner: Northern Health  
Stantec # 144320012

---

This addendum is to be read with and constitutes part of the tender document.

---

## 0.0 GENERAL

Please see attached Hazmat report:

Note:

Mechanical in the area has been renovated between 2001 – 2005, there are still pieces of piping or duct work in these areas that may require abatement. Contractor to coordinate on site with FMO

## 1.0 SPECIFICATIONS

### 1.1 **Section 25 05 00:**

**Delete** item 1.2.6 in section 25 05 00. **Delete** “The two louver actuators in existing level 3 Electrical Room to be connected and controlled by BMS system to control the electrical room temperature during free-cooling mode”.

### 1.2 **Section 25 90 10:**

**Delete** item 1.2.2.3. **Delete** “New Split system Air conditioning units”.

### 1.3 **Section 23 05 00:**

16 to item 3.4 in section 23 05 00.

“Clean all new ductwork plus 300 mm upstream and downstream of the existing duct where the new duct is connected to”.

### 1.4 **Section 25 90 10:**

**Update** item 3.6.1.1 to be read as following. “Medical refrigerators and freezers may not be equipped with temperature sensors and dry contacts for monitoring and alarm. Contractor to allow for a temperature sensor / dry contract for the medical fridge”.

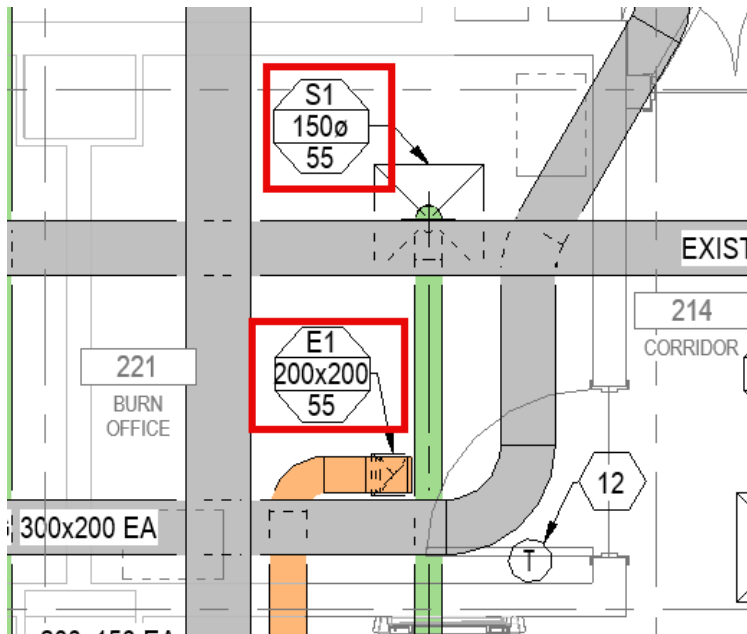
## 2.0 DRAWINGS

### 2.1 **Drawing M200:**

**Delete** general note 7 on drawing M200. **Delete** “Replace all existing duct actuators that will serve all new zones with new actuators for exist ahu-804. Refer to image 12 on dwg m600 for make and model of new actuators (belimo lm24-sr us). Total of 18 actuators. Contractor to visit the site to evaluate the available accessibility for replacing the existing actuators”.

## 2.2 Drawing M200:

Increase S/A and E/A flows to Burn Office 221 to 55 L/S as shown in below snip.



## 3.0 CLARIFICATIONS

**Q:** Are the two louver actuators to be connected to BMS located in Elec 322?  
a. Section 25 05 00, item 1.2.6

**A:** Not Required. Delete item 1.2.6 in section 25 05 00.

**Q:** Is any of the wiring for this project for B.M.S. Life Safety Systems?  
a. Section 25 05 00, 1.8.5.1

**A:** As specified.

**Q:** Where is Drawing M600?  
a. Drawing M200, General Note 7

**A:** Delete General note 7 on drawing M200. There is no drawing M600.

**Q:** What is the operators Terminal Display Unit?  
a. Section 25 90 10, 3.1.1

**A:** As specified.

**Q:** Does the small fridge for medication have temperature sensors / dry contacts for monitoring and alarm?

- a. Section 25 90 10, 3.6.1.1.
- b. A-202 New Equipment Plan, keynote 7

**A:** The fridge in Burn Office 221 is a medication fridge that needs to be connected and monitored and alarm at BMS system as specified in section 25 90 10. The owner cannot confirm at the moment if the medical fridge has a temperature sensor / dry contact. Contractor to allow for a temperature sensor / dry contact.

**Q:** Where are the new split air conditioning units located in the project space?

- a. 25 90 10, item 1.2.2.3

**A:** There are no new split air conditioning units. Delete item 1.2.2.3 in section 25 90 10.

**Q:** Please define scope of duct cleaning as we are connecting to existing ducting, are we to only clean the new ducting and sanitize, or do we clean the new and existing ducting? If we are cleaning the existing ducting, we will require a set of drawings and a scope of work so that the cleaning agencies will be able to properly quote the scope of work. - Reference Section 23 05 00, Item 1.8.9

**A:** Clean all new ductwork plus 300 mm upstream and downstream of the existing duct where the new duct is connected to.

**Stantec Architecture Ltd.**

**Eleonore Leclerc**  
Principal, Architect AIBC, SAA, OAA

Cell: 604 369-6753  
Eleonore.Leclerc@stantec.com

**END OF ADDENDUM #4**



FUNCTIONAL AREA and description)	ID CODE DESCRIPTION AND APPLICATION	VIS	CONDITION	ACCESSIBILITY	FRIABILITY	QUANTITY	UNIT	FOOT NOTES
-------------------------------------	--	-----	-----------	---------------	------------	----------	------	---------------

**PGRH SITE - PRINCE GEORGE REGIONAL BUILDING**

**APPLICATIONS LOCATED RANDOMLY THROUGHOUT THE FACILITY**

J1 - Cement Asbestos Piping	Good	Low - High	Low		LF	///
K2 - Sewer Unions	Fair	Low - Mod	Moderate		Unit	///

**SUB-BASEMENT**

Mechanical Room 12	D1 - 600gal DHWT		Fair	High	High	150	SF	
Mechanical Room 12	D1 - 1200gal DHWT		Fair	High	High	300	SF	
Crawlspace Under CSD	A1 - Fireproofing Spray		Fair	Moderate	High	5000	SF	IV

**GROUND FLOOR**

0001	Garbage Room	A1 - Fireproofing Spray	WB	Fair	Moderate	High	100	SF	
0005A	Pipe Chase	A1 - Fireproofing Debris	WW	Fair	Moderate	High	25	SF	///
0005B	Pipe Chase	A1 - Fireproofing Debris	WW	Fair	Moderate	High	35	SF	///
0017	Bulk Stores	H2 / H3 - Floor Tile		Fair	Moderate	High	2340	SF	
0017	Bulk Stores	A1 - Fireproofing Spray	WB	Fair	Moderate	High	600	SF	
0018	Processed Stores Entry	A1 - Fireproofing Spray	AT	Fair	Moderate	High	50	SF	
0021	Office	A1 - Fireproofing Spray	AT	Fair	Moderate	High	25	SF	
0023	Stores Dispatch	A1 - Fireproofing Spray	AT	Fair	Moderate	High	25	SF	
0025	Instruments	I3 - Floor Sheeting		Good	Moderate	High	290	SF	
0026	Prep/Sterile Stores	H3 - Floor Tile		Good	Moderate	High	2150	SF	
0026A	Prep/Sterile	H2 - Floor Tile		Good	Moderate	High	1280	SF	
0026	Prep/Sterile Stores	A1 - Fireproofing Spray		Fair	Moderate	High	750	SF	
0029	Office	H3 - Floor Tile		Good	Moderate	High	100	SF	
0032	Corridor	H1 / H4 - Floor Tile		Good	Moderate	High	1392	SF	
0032	Corridor	A1 - Fireproofing Spray	WB	Fair	Moderate	High	450	SF	///
0034	Corridor	I3 - Floor Sheeting		Good	Moderate	High	1200	SF	
0034A	Storage Closet	I3 - Floor Sheeting		Good	Moderate	High	25	SF	
0035	Laundry Linen Finishing	A1 - Fireproofing Spray	WW	Fair	Moderate	High	50	SF	///
0036	Vestibule/Sterile Storage	A1 - Fireproofing Spray	AT	Fair	Moderate	High	150	SF	
0037	Mechanical Room	A1 - Fireproofing Spray	WB	Fair	Moderate	High	100	SF	///
0044	Central Viewing	I3 - Floor Sheeting		Good	Moderate	High	270	SF	
0045	Autopsy Preparation	I3 - Floor Sheeting		Good	Moderate	High	270	SF	
0046	Storage	I3 - Floor Sheeting		Good	Moderate	High	30	SF	
0048	Washroom	I3 - Floor Sheeting		Good	Moderate	High	50	SF	
0049	Autopsy	I3 - Floor Sheeting		Good	Moderate	High	320	SF	
0050	Female Staff Washroom	I3 - Floor Sheeting		Good	Moderate	High	130	SF	
0051	Female Staff Shower	I3 - Floor Sheeting		Good	Moderate	High	50	SF	
0052	Washroom	I3 - Floor Sheeting		Good	Moderate	High	30	SF	
0053	Female Locker Room	I3 - Floor Sheeting		Good	Moderate	High	2020	SF	
0054	Store Room & Vestibule	I3 - Floor Sheeting		Good	Moderate	High	130	SF	
0055	Corridor	I3 - Floor Sheeting		Good	Moderate	High	750	SF	
0057	Male Staff Lockers	I7 - Floor Sheeting		Good	Moderate	High	600	SF	
0058	Male Staff Washroom	I7 - Floor Sheeting		Good	Moderate	High	100	SF	
0059	Corridor	I3 - Floor Sheeting		Good	Moderate	High	1100	SF	
0062	Corridor	I3 - Floor Sheeting		Good	Moderate	High	420	SF	
0063	Plant Services Reception	I7 - Floor Sheeting		Good	Moderate	High	185	SF	
0065	Key Cutting Area	I3 - Floor Sheeting		Good	Moderate	High	110	SF	
0066	Plan	I7 - Floor Sheeting		Good	Moderate	High	95	SF	
0067	Office	I7 - Floor Sheeting		Good	Moderate	High	160	SF	
0068	Office	I7 - Floor Sheeting		Good	Moderate	High	110	SF	
0080	Housekeeping (former off	I7 - Floor Sheeting		Good	Moderate	High	100	SF	
0083	Male Locker Vestibule	I7 - Floor Sheeting		Good	Moderate	High	30	SF	
0086	Lockers & Washroom	H1 - Floor Tile		Good	Moderate	High	130	SF	

FUNCTIONAL AREA and description)	ID CODE DESCRIPTION AND APPLICATION	VIS	CONDITION	ACCESSIBILITY	FRIABILITY	QUANTITY	UNIT	FOOT NOTES
<b>PGRH SITE - PRINCE GEORGE REGIONAL BUILDING</b>								
<b>GROUND FLOOR Con't</b>								
0087	Corridor to Sterile Stores		H1 - Floor Tile	Good	Moderate	High	50	SF
0088	Lockers & Washroom		H1 - Floor Tile	Good	Moderate	High	130	SF
0089	Storage / Lunch Room		H1 - Floor Tile	Good	Moderate	High	450	SF
0090	Corridor		I4 - Floor Sheeting	Good	Moderate	High	770	SF
0091A	Mechanical Room 7		B1 - Pipe Insulation	Fair	Moderate	High	50	LF
0091A	Mechanical Room 7		C1 - Insulating Cement	Fair	Moderate	High	75	FTG
0100	Blood Bank		I4 - Floor Sheeting	Good	Moderate	High	750	SF
0100	Blood Bank	AT	B1 - Pipe Insulation	Fair	Moderate	High	120	LF
0100A	Corridor	AT	B1 - Pipe Insulation	Fair	Moderate	High	70	LF
0100A	Corridor		I4 - Floor Sheeting	Good	Moderate	High	175	SF
0101	Haematology		I4 - Floor Sheeting	Good	Moderate	High	1520	SF
0101	Haematology	AT	B1 - Pipe Insulation	Poor	High	High	230	LF
0101	Haematology	W W	B1 - Pipe Insulation	Fair	Moderate	High	100	LF V
0103	Haematology Supervisor		I4 - Floor Sheeting	Good	Moderate	High	55	SF
0104	Accessioning		I5 - Floor Sheeting	Good	Moderate	High	180	SF
0104	Accessioning	AT	B1 - Pipe Insulation	Fair	Moderate	High	70	LF
0105	Flouro Mico		I4 - Floor Sheeting	Good	Moderate	High	460	SF
0106	Chemistry		I4 - Floor Sheeting	Good	Moderate	High	440	SF
0106	Chemistry	AT	B1 - Pipe Insulation	Fair	Moderate	High	130	LF
0108	Lab Wash-up		I6 - Floor Sheeting	Good	Moderate	High	170	SF
0108	Lab Wash-up	SAF	B1 - Pipe Insulation	Fair	Low	High	12	LF
0109	Washroom		I5 - Floor Sheeting	Good	Moderate	High	40	SF
0110	Corridor		I3/ I4 - Floor Sheeting	Good	Moderate	High	540	SF
0111	Corridor		I4 - Floor Sheeting	2-L Good	Moderate	High	450	SF
0111	Corridor	AT	B1 - Pipe Insulation	Fair	High	High	20	LF
0112	Corridor		I4 - Floor Sheeting	Good	Moderate	High	190	SF
0112	Corridor	AT	B1 - Pipe Insulation	Good	High	High	20	LF
0113	Corridor	W W	B1 - Pipe Insulation	Fair	High	High	12	LF
0113	Corridor	W W	B1 - Pipe Insulation	Fair	Moderate	High	15	LF
0114	Corridor		I4 - Floor Sheeting	Good	Moderate	High	400	SF
0116	Pathology Office		I5 - Floor Sheeting	Good	Moderate	High	115	SF
0117	Pathology Office		I5 - Floor Sheeting	Good	Moderate	High	115	SF
0118	Pathology Office		I5 - Floor Sheeting	Good	Moderate	High	115	SF
0120	Chemistry		I4 / I5 - Floor Sheeting	Good	Moderate	High	400	SF
0120	Chemistry	AT	B1 - Pipe Insulation	Poor	High	High	50	LF
0121	Accessioning		I4 / I5 - Floor Sheeting	Good	Moderate	High	700	SF
0127	Infection Control Office		I5 - Floor Sheeting	Good	Moderate	High	90	SF
0128	Washroom		I5 - Floor Sheeting	Good	Moderate	High	65	SF
0129	Histopathology C/R Room		I6 - Floor Sheeting	Good	Moderate	High	130	SF
0130	Histopathology Storage		I6 - Floor Sheeting	Good	Moderate	High	120	SF
0130A	Histopathology Storage		I6 - Floor Sheeting	Good	Moderate	High	120	SF
0132	Computer Training Room	SUL	I5 - Floor Sheeting	Good	Low	High	270	SF
0133	Conference Room		I5 - Floor Sheeting	Good	Moderate	High	440	SF
0134	Corridor		I4 - Floor Sheeting	Good	Moderate	High	60	SF
0135	Media		I6 - Floor Sheeting	Good	Moderate	High	250	SF
0135A	Storage		I6 - Floor Sheeting	Good	Moderate	High	25	SF
0135B	Storage		I6 - Floor Sheeting	Good	Moderate	High	60	SF
0137	Bacteriology		I6 - Floor Sheeting	Good	Moderate	High	1160	SF
0143	Office	AT	B1 - Pipe Insulation	Good	Moderate	High	12	LF
0144	Office	AT	B1 - Pipe Insulation	Good	Moderate	High	14	LF
0152	Mechanical Room 29		A5 - Fireproofing Debris	Poor	High	High	350	SF /
0152	Mechanical Room 29		B1 - Pipe Insulation	Poor	High	High	130	LF

FUNCTIONAL AREA (and description)	ID CODE DESCRIPTION AND APPLICATION	VIS	CONDITION	ACCESSIBILITY	FRIABILITY	QUANTITY	UNIT	FOOT NOTES
<b>PGRH SITE - PRINCE GEORGE REGIONAL BUILDING</b>								
<b>GROUND FLOOR Con't</b>								
0152A Mechanical Space	B1 - Pipe Insulation		Fair	High	High	15	LF	
0152A Mechanical Space	B1 - Pipe Insulation	AF	Fair	Low	High	20	LF	
0152A Mechanical Space	C1 - Insulating Cement		Fair	High	High	8	FTG	
0157 Electrical Room 1	B1 - Pipe Insulation		Good	High	High	70	LF	
0158 Computer Server	B1 - Pipe Insulation		Good	High	High	20	LF	
0194 Corridor	B1 - Pipe Insulation	AT	Good	Moderate	High	70	LF	
0194 Corridor	C1 - Insulating Cement	AT	Good	Moderate	High	30	FTG	
0195 Office	A5 - Fireproofing Debris	AT	Poor	Low	High	70	SF	//
0196 Washroom	H1 - Floor Tile		Good	Moderate	High	25	SF	
0197 TV Repair Room	H1 - Floor Tile		Good	Moderate	High	100	SF	
0198 Storage	H1 - Floor Tile		Good	Moderate	High	115	SF	
0199 Health Records Storage	A5 - Fireproofing Debris		Poor	Low	High	1300	SF	//
0199 Health Records Wall Cav	A5 - Fireproofing Debris		Poor	Low	High	150	SF	//
0199 Health Records Storage	B1 - Pipe Insulation		Fair	High	High	10	LF	
0199 Health Records Storage	C1 - Insulating Cement		Poor	High	High	2	FTG	
0201 Corridor	B1 - Pipe Insulation	AT		Moderate	High	40	LF	
0203 Vestibule	I6 - Floor Sheeting		Good	Moderate	High	450	SF	
0203A Vestibule	B1 - Pipe Insulation	AT	Fair	Moderate	High	35	LF	
0203B Link Corridor	I5 / I7 - Floor Sheeting		Good	Moderate	High	900	SF	
0204 Corridor	I3 - Floor Sheeting		Good	Moderate	High	135	SF	
0205 Washroom	I3 - Floor Sheeting		Good	Moderate	High	30	SF	
0206 I.T. Storage	I3 - Floor Sheeting		Good	Moderate	High	40	SF	
0206 I.T. Storage	B1 - Pipe Insulation	AT	Good	Moderate	High	10	LF	
0207 I.T. Workshop / Storage	I3 - Floor Sheeting		Good	Moderate	High	205	SF	
0207 I.T. Workshop / Storage	B1 - Pipe Insulation	AT	Good	Moderate	High	25	LF	
0208 IS Office	H5 - Floor Tile		Good	Moderate	High	190	SF	
0208 IS Office	B1 - Pipe Insulation	AT	Good	Moderate	High	25	LF	
0210 Office	B1 - Pipe Insulation	AT	Good	Moderate	High	20	LF	
0211 Corridor	B1 - Pipe Insulation	AT	Fair	Moderate	High	25	LF	
0213 Office	B1 - Pipe Insulation	AT	Good	Moderate	High	25	LF	
0214 Clerical	B1 - Pipe Insulation	AT	Good	Moderate	High	15	LF	
0215 Health Records	B1 - Pipe Insulation	AT	Good	Moderate	High	80	LF	
0217 I.T. Storage	H1 - Floor Tile		Good	Moderate	High	160	SF	
0218 I.T. Office	I3 - Floor Sheeting		Good	Moderate	High	475	SF	
0220 Mechanical Room 1	A6 - Ceiling Texture		Fair	Moderate	High	230	SF	VI
0220 Mechanical Room 1	C3 - Insulating Cement		Poor	High	High	15	FTG	
0221 Telephone Room	H3 / H5 - Floor Tile		Good	Moderate	High	340	SF	
0226 File Room	H1 - Floor Tile		Good	Moderate	High	720	SF	
0226 File Room	B1 - Pipe Insulation		Good	High	High	7	LF	
0226 File Room	B1 - Pipe Insulation		Fair	High	High	75	LF	
0226 File Room	B1 - Pipe Insulation		Fair	High	High	100	LF	
0227 Office	B1 - Pipe Insulation	AT	Good	Moderate	High	35	LF	
0228 Cafeteria	A1 - Fireproofing Spray	WB	Fair	Moderate	High	200	SF	
0255 Storage Room	H1 - Floor Tile		Good	Moderate	High	260	SF	
0256 Pneumatic Tube Room	H1 - Floor Tile		Good	Moderate	High	190	SF	
0257 Corridor	H1 - Floor Tile		Good	Moderate	High	170	SF	
0258 Corridor	H1 - Floor Tile		Good	Moderate	High	500	SF	
0258 Corridor	A1 - Fireproofing Spray	WB	Fair	Moderate	High	50	SF	///
0258A Store Room	H1 - Floor Tile		Good	Moderate	High	65	SF	
0258A Store Room	A1 - Fireproofing Debris	WW	Fair	Moderate	High	60	SF	///
0259 Corridor	H1 - Floor Tile		Good	Moderate	High	1050	SF	

FUNCTIONAL AREA and description)	ID CODE DESCRIPTION AND APPLICATION	VIS	CONDITION	ACCESSIBILITY	FRIABILITY	QUANTITY	UNIT	FOOT NOTES
-------------------------------------	--	-----	-----------	---------------	------------	----------	------	---------------

**PGRH SITE - PRINCE GEORGE REGIONAL BUILDING**

**GROUND FLOOR Con't**

0259	Corridor	A1 - Fireproofing Spray	WB	Fair	Moderate	High	50	SF	///
0259A	Corridor	I3 - Floor Sheeting		Good	Moderate	High	215	SF	
0259A	Corridor	B1 - Pipe Insulation	AT	Good	Moderate	High	35	LF	
0260	Corridor	H1 - Floor Tile		Good	Moderate	High	615	SF	
0265	Office	B1 - Pipe Insulation	AT	Good	Moderate	High	40	LF	
0266	Office	B1 - Pipe Insulation	AT	Good	Moderate	High	20	LF	
0267	Office	B1 - Pipe Insulation	AT	Good	Moderate	High	20	LF	
0268	Occupational Health Srv.	B1 - Pipe Insulation	AT	Good	Moderate	High	60	LF	
0269	Office	B1 - Pipe Insulation	AT	Good	Moderate	High	40	LF	
0270	Materials Waiting Area	B1 - Pipe Insulation	AT	Good	Moderate	High	40	LF	
0271	Exam / First Aid Room	H1 - Floor Tile		Good	Moderate	High	180	SF	
0271	Exam / First Aid Room	B1 - Pipe Insulation	AT	Good	Moderate	High	30	LF	
0272	Exam Washroom	H1 - Floor Tile		Good	Moderate	High	35	SF	
0272	Exam Washroom	B1 - Pipe Insulation	AT	Good	Moderate	High	10	LF	
0273	Washroom	H1 - Floor Tile		Good	Moderate	High	45	SF	
0274	Dietician Office	I4 - Floor Sheeting		Good	Moderate	High	245	SF	
0274	Dietician Office	B1 - Pipe Insulation	AT	Good	Moderate	High	30	LF	
0275	Corridor	I3 - Floor Sheeting		Good	Moderate	High	290	SF	
0275	Corridor	B1 - Pipe Insulation	AT	Fair	Moderate	High	20	LF	
0276	Elevator Lobby	C1 - Insulating Cement	AT	Good	Moderate	High	15	FTG	
0277	Corridor	B1 - Pipe Insulation	AT	Poor	High	High	30	LF	
ST01	Stairwell Lower Landing	H1 - Floor Tile		Good	Moderate	High	70	SF	
ST01	Stairwell Landings	H1 - Floor Tile		Poor	Moderate	High	130	SF	
ST02	Lower & Mid Stair Landin	H1 - Floor Tile		Good	Moderate	High	210	SF	
ST05	Stairwell	I3 - Floor Sheeting		Good	Moderate	High	75	SF	
ST05	Stairwell	B1 - Pipe Insulation	W W		Low	High	30	LF	///
ST05A	Under Stair Storage	B1 - Pipe Insulation	L	Fair	High	High	60	LF	
ST06	Under Stair Storage	C1 - Insulating Cement		Poor	High	High	2	FTG	
ST07	Stairwell	B1 - Pipe Insulation	W W		Low	High	30	LF	///
ST07	Stairwell Basement Level	B1 - Pipe Insulation	L	Poor	High	High	75	LF	
	Throughout 1967-1976 Renovation Areas	P1 - Drywall Filler		Good	High	Moderate		SF	VII

**MAIN FLOOR**

1021	Female OR Staff Corridor	I3 - Floor Sheeting		Good	Moderate	High	60	SF	
1036	OR Entry Transfer Area	I3 - Floor Sheeting		Good	Moderate	High	180	SF	
1039	Female OR Staff Change	I3 - Floor Sheeting		Good	Moderate	High	510	SF	
1040	Male OR Staff Change R	I3 - Floor Sheeting		Good	Moderate	High	245	SF	
1041	Male OR Staff Lounge	I3 - Floor Sheeting	SUL	Good	Low	High	840	SF	
1043	Male OR Staff Washroom	I3 - Floor Sheeting		Poor	High	High	45	SF	
1044	Washroom	I3 - Floor Sheeting		Good	Moderate	High	80	SF	
1045	Office	I3 - Floor Sheeting		Good	Moderate	High	125	SF	
1047	OR Corridor	I3 - Floor Sheeting		Good	Moderate	High	250	SF	
1048	OR Corridor	I3 - Floor Sheeting		Good	Moderate	High	705	SF	
1049	Corridor	I3 - Floor Sheeting		Good	Moderate	High	90	SF	
1050	Soiled Utility Room	I3 - Floor Sheeting		Good	Moderate	High	205	SF	
1051	Office	I3 - Floor Sheeting		Good	Moderate	High	155	SF	
1052A	Store Room	I3 - Floor Sheeting		Good	Moderate	High	55	SF	
1053	Corridor	I3 - Floor Sheeting		Good	Moderate	High	290	SF	
1054	Washroom	I3 - Floor Sheeting		Good	Moderate	High	30	SF	
1055	Corridor	I3 - Floor Sheeting		Good	Moderate	High	900	SF	
1056	Corridor	I3 - Floor Sheeting		Good	Moderate	High	35	SF	
1058	OR 2	I3 - Floor Sheeting		Good	Moderate	High	340	SF	



FUNCTIONAL AREA and description)	ID CODE DESCRIPTION AND APPLICATION	VIS	CONDITION	ACCESSIBILITY	FRIABILITY	QUANTITY	UNIT	FOOT NOTES
-------------------------------------	--	-----	-----------	---------------	------------	----------	------	---------------

**PGRH SITE - PRINCE GEORGE REGIONAL BUILDING**

**MAIN FLOOR Con't**

1059	Equipment Storage	13 - Floor Sheeting		Good	Moderate	High	120	SF
1061	OR 4	13 - Floor Sheeting		Good	Moderate	High	340	SF
1063	OR Theatre Corridor	13 - Floor Sheeting		Good	Moderate	High	1230	SF
1064	Process	13 - Floor Sheeting		Good	Moderate	High	120	SF
1065	Corridor	13 - Floor Sheeting		Good	Moderate	High	450	SF
1066	OR 10	13 - Floor Sheeting		Good	Moderate	High	340	SF
1069	Equipment Storage	13 - Floor Sheeting		Good	Moderate	High	120	SF
1070	OR 7	13 - Floor Sheeting		Good	Moderate	High	340	SF
1072	Custodial Room	13 - Floor Sheeting		Good	Moderate	High	90	SF
1073	Corridor	13 - Floor Sheeting		Good	Moderate	High	1000	SF
1074	P.A.R.	13 - Floor Sheeting		Good	Moderate	High	2560	SF
1075	Nurses Station	13 - Floor Sheeting		Good	Moderate	High	100	SF
1077	Isolation Ward	13 - Floor Sheeting		Good	Moderate	High	120	SF
1078	Female Change Room	13 - Floor Sheeting		Good	Moderate	High	180	SF
1079A	Nurses Station	13 - Floor Sheeting		Poor	High	High	65	SF
1080	Waiting Area	13 - Floor Sheeting		Good	Moderate	High	680	SF
1081	Corridor	13 - Floor Sheeting		Good	Moderate	High	65	SF
1082	Washroom	13 - Floor Sheeting		Good	Moderate	High	60	SF
1083	Washroom	13 - Floor Sheeting		Good	Moderate	High	60	SF
1085	Equipment Storage	13 - Floor Sheeting		Good	Moderate	High	75	SF
1086	Office	13 - Floor Sheeting		Good	Moderate	High	105	SF
1087	Office	13 - Floor Sheeting		Good	Moderate	High	140	SF
1089	Office	13 - Floor Sheeting		Good	Moderate	High	220	SF
1091	Head Nurses Office	13 - Floor Sheeting	SUC	Good	Moderate	High	70	SF
1092	Bookings Office	13 - Floor Sheeting		Good	Moderate	High	130	SF
1093	A.C.C. Office	13 - Floor Sheeting		Good	Moderate	High	100	SF
1094	Corridor	13 - Floor Sheeting		Good	Moderate	High	1670	SF
1095	Mammogram	13 - Floor Sheeting		Good	Moderate	High	135	SF
1096	Mammo Change Room	13 - Floor Sheeting		Good	Moderate	High	15	SF
1097	Mammo Control Room	13 - Floor Sheeting		Good	Moderate	High	60	SF
1098	Soiled Utility Room	13 - Floor Sheeting		Good	Moderate	High	50	SF
1102	Head Scanner	13 - Floor Sheeting		Good	Moderate	High	540	SF
1106	Radiology D.R.	13 - Floor Sheeting		Good	Moderate	High	60	SF
1107	Radiology Sorting	13 - Floor Sheeting		Good	Moderate	High	90	SF
1109	Lounge	13 - Floor Sheeting	S	Good	Moderate	High	135	SF
1110	Corridor	13 - Floor Sheeting		Good	Moderate	High	205	SF
1112	Director	13 - Floor Sheeting		Good	Moderate	High	175	SF
1115	Corridor	13 - Floor Sheeting		Good	Moderate	High	90	SF
1116	Radiology	13 - Floor Sheeting		Good	Moderate	High	170	SF
1118	Office	13 - Floor Sheeting		Good	Moderate	High	95	SF
1119	Office	17 - Floor Sheeting		Good	Moderate	High	65	SF
1120	Control	13 - Floor Sheeting		Good	Moderate	High	30	SF
1121	Corridor	13 - Floor Sheeting		Good	Moderate	High	125	SF
1122	Document Viewing	13 - Floor Sheeting		Good	Moderate	High	120	SF
1123	Control	13 - Floor Sheeting		Good	Moderate	High	55	SF
1126	Trauma	13 - Floor Sheeting		Good	Moderate	High	290	SF
1129	Washroom	13 - Floor Sheeting		Good	Moderate	High	25	SF
1131	Change Room	13 - Floor Sheeting		Good	Moderate	High	130	SF
1132	Waiting Area	13 - Floor Sheeting		Good	Moderate	High	420	SF
1133	Printer Room	13 - Floor Sheeting		Good	Moderate	High	40	SF
1136	File Room	13 - Floor Sheeting		Good	Moderate	High	40	SF
1137	File Room	13 - Floor Sheeting		Good	Moderate	High	50	SF

FUNCTIONAL AREA and description)	ID CODE DESCRIPTION AND APPLICATION	VIS	CONDITION	ACCESSIBILITY	FRIABILITY	QUANTITY	UNIT	FOOT NOTES
-------------------------------------	--	-----	-----------	---------------	------------	----------	------	---------------

**PGRH SITE - PRINCE GEORGE REGIONAL BUILDING**

**MAIN FLOOR Con't**

1138	Waiting Area	I7 - Floor Sheeting		Good	Moderate	High	50	SF	
1140	Clean Utility Room	I3 - Floor Sheeting		Good	Moderate	High	60	SF	
1141	Office	I3 - Floor Sheeting		Good	Moderate	High	135	SF	
1141A	Booking	I3 - Floor Sheeting		Good	Moderate	High	180	SF	
1144	A.C.C. Office	I3 - Floor Sheeting		Good	Moderate	High	290	SF	
1145	Corridor	I3 - Floor Sheeting		Good	Moderate	High	660	SF	
1202	Stretcher Holding Area	I4 - Floor Sheeting		Good	Moderate	High	30	SF	
1204	Scanner	I5 - Floor Sheeting		Good	Moderate	High	145	SF	
1205	Control Room	I5 - Floor Sheeting		Good	Moderate	High	85	SF	
1206	Dark Room	I4 - Floor Sheeting		Good	Moderate	High	70	SF	
1207	Washroom	I4 - Floor Sheeting		Good	Moderate	High	35	SF	
1208	Washroom	I4 - Floor Sheeting		Good	Moderate	High	25	SF	
1209	Corridor	I4 - Floor Sheeting		Good	Moderate	High	240	SF	
1210	Medium Level Lab	I6 - Floor Sheeting		Good	Moderate	High	190	SF	
1211	Injection	I6 - Floor Sheeting		Good	Moderate	High	100	SF	
1213	Clean Holding Area	I4 - Floor Sheeting		Good	Moderate	High	40	SF	
1214	Soiled Utility Room	I4 - Floor Sheeting		Good	Moderate	High	40	SF	
1215	Custodial Room	I4 - Floor Sheeting		Good	Moderate	High	60	SF	
1216	Corridor	I4 - Floor Sheeting		Good	Moderate	High	250	SF	
1216A	Office	I4 - Floor Sheeting		Good	Moderate	High	60	SF	
1217	Washroom	I4 - Floor Sheeting		Good	Moderate	High	25	SF	
1219	C. Tech Room	I4 - Floor Sheeting	SUC	Good	Low	High	225	SF	
1221	Ultra Sound	I4 - Floor Sheeting		Good	Moderate	High	180	SF	
1222	Ultra Sound	I4 - Floor Sheeting		Good	Moderate	High	245	SF	
1223	Mail Room	I3 - Floor Sheeting	S	Good	Moderate	High	75	SF	
1224	A.C.C.	I4 - Floor Sheeting		Good	Moderate	High	165	SF	
1226	Corridor	I4 - Floor Sheeting		Good	Moderate	High	70	SF	
1354	Corridor	I3 - Floor Sheeting		Good	Moderate	High	375	SF	
1357	Pastoral Care Room	I3 - Floor Sheeting	SUC	Good	Low	High	360	SF	
1358	Patient Washroom	I4 - Floor Sheeting		Good	Moderate	High	60	SF	
ST01	Stairwell Landings	H2 - Floor Tile		Good	Moderate	High	180	SF	
ST02	Stairwell Landings	H2 - Floor Tile		Good	Moderate	High	200	SF	
ST05	Stairwell Landings	I4 - Floor Sheeting		Good	Moderate	High	100	SF	
ST05	Stairwell	B1 - Pipe Insulation	W W		Low	High	30	LF	///
ST07	Stairwell	B1 - Pipe Insulation	W W		Low	High	30	LF	///
	Throughout 1950's Sectic	B1 - Pipe Insulation	W W		Low	High	1000	LF	///

**SECOND FLOOR**

2065	Com / Electrical Room	H2 - Floor Tile		Good	Moderate	High	90	SF	
2078	Corridor	I3 - Floor Sheeting		Good	Moderate	High	275	SF	
2078A	Care Room	I3 - Floor Sheeting		Good	Moderate	High	100	SF	
2090	Corridor	I3 - Floor Sheeting		Good	Moderate	High	260	SF	
2091	Store Room	I3 - Floor Sheeting		Good	Moderate	High	250	SF	
2093	Corridor	I3 - Floor Sheeting		Good	Moderate	High	200	SF	
2094	1 - Bed Ward	I3 - Floor Sheeting		Good	Moderate	High	140	SF	
2097	Staff Room	I3 - Floor Sheeting		Good	Moderate	High	160	SF	
2132	Shower Room	I3 - Floor Sheeting		Good	Moderate	High	25	SF	
2140	Shower Room	I3 - Floor Sheeting		Good	Moderate	High	20	SF	
2141	Shower Room	I3 - Floor Sheeting		Good	Moderate	High	20	SF	
ST01	Stairwell Landings	H2 - Floor Tile		Good	Moderate	High	180	SF	
ST02	Stairwell Landings	H2 - Floor Tile		Good	Moderate	High	200	SF	
ST14	Stairwell Landings	H2 - Floor Tile		Good	Moderate	High	30	SF	
	Throughout West Wing and Inter-Link Wing	A1 - Fireproofing Spray	W W	Fair	Moderate	High		SF	///
	Throughout 1950's Sectic	B1 - Pipe Insulation	W W		Low	High	1000	LF	///

FUNCTIONAL AREA (and description)	ID CODE DESCRIPTION AND APPLICATION	VIS	CONDITION	ACCESSIBILITY	FRIABILITY	QUANTITY	UNIT	FOOT NOTES
--------------------------------------	--	-----	-----------	---------------	------------	----------	------	---------------

**PGRH SITE - PRINCE GEORGE REGIONAL BUILDING**

**THIRD FLOOR**

Throughout West Wing and Inter-Link Wing	A1 - Fireproofing Spray	WW	Fair	Moderate	High		SF	///
ST01 Stairwell Landings	H2 - Floor Tile		Good	Moderate	High	180	SF	
ST02 Stairwell Landings	H2 - Floor Tile		Good	Moderate	High	200	SF	
ST14 Stairwell Landings	H2 - Floor Tile		Good	Moderate	High	150	SF	
Throughout 1950's Sectic	B1 - Pipe Insulation	W W		Low	High	1000	LF	///

**FOURTH FLOOR**

West East Wing Walls	A1 - Fireproofing Spray	WW	Fair	Moderate	High	4500	SF	///
-------------------------	-------------------------	----	------	----------	------	------	----	-----

**ROOF TOP PENTHOUSE MECHANICAL SPACES - ACCESS FROM 4TH FLOOR**

4074 Mechanical Room	A1 - Fireproofing Debris		Poor	High	High	170	SF	
4074 Mechanical Room	A1 - Fireproofing Spray		Fair	Moderate	High	170	SF	
4074 Mechanical Room Walls	A1 - Fireproofing Spray	WW	Fair	Moderate	High	700	SF	///
MR17 Mechanical Room 17	K1 - Duct Joint		Good	High	Low	2	Joint	
MR17 Mechanical Room Walls	A1 - Fireproofing Spray	WW	Fair	Moderate	High	800	SF	///
MR17 Mechanical Room	A1 - Fireproofing Spray		Good	Moderate	High	550	SF	
MR18 Mechanical Room 18	K1 - Duct Joint		Good	High	Low	2	Joint	
MR18 Mechanical Room Walls	A1 - Fireproofing Spray	WW	Fair	Moderate	High	800	SF	///
MR18 Mechanical Room	A1 - Fireproofing Spray		Fair	Moderate	High	550	SF	
MR19 Mechanical Room Walls	A1 - Fireproofing Spray	WW	Fair	Moderate	High	800	SF	///

**ROOF TOP PENTHOUSE MECHANICAL SPACES - ACCESS FROM 4TH FLOOR Con't**

MR19 Mechanical Room	A1 - Fireproofing Spray		Fair	Moderate	High	550	SF	
ST01 Stairwell Landings	H2 - Floor Tile		Good	Moderate	High	180	SF	
ST01 Stairwell Ceiling	A1 - Fireproofing Spray		Good	Moderate	High	180	SF	
ST01 Stairwell Walls	A1 - Fireproofing Debris	WW	Fair	Moderate	High	800	SF	///
ST02 Stairwell Ceiling	A1 - Fireproofing Spray		Good	Moderate	High	180	SF	
ST02 Stairwell Walls	A1 - Fireproofing Spray	WW	Fair	Moderate	High	800	SF	///
ST05 Stairwell	C1 - Insulating Cement		Good	High	High	6	FTG	
ST07 Stairwell	C1 - Insulating Cement		Good	High	High	1	FTG	
ST15 Stairwell Opening	A1 - Fireproofing Spray		Poor	High	High	25	SF	

**ROOF TOP PENTHOUSE MECHANICAL SPACES - ACCESS FROM 5TH FLOOR**

5019 work Area	A1 - Fireproofing Spray	WW	Fair	Moderate	High	100	SF	///
5074 Mechanical Room	A1 - Fireproofing Spray		Fair	Moderate	High	170	SF	
5074 Mechanical Room Walls	A1 - Fireproofing Spray	WW	Fair	Moderate	High	700	SF	///
MR20 Mechanical Room 20	C1 - Insulating Cement		Poor	High	High	1	FTG	
MR20 Mechanical Room 20	C1 - Insulating Cement		Good	High	High	9	FTG	
Redundant Chillier Room	C1 - Insulating Cement		Poor	Low	High	30	FTG	

**FOOT NOTES**

- I Amosite fireproofing debris was located on the floor in this area. Cleaning of the entire space (as noted on Drawing 743 ASB 4.1) is recommended
- II Amosite fireproofing debris was located on old hangers and hollows in the concrete deck in this area. Cleaning of the entire space (as noted on Drawing 743 ASB 4.1) is only recommended where work activities will impact concrete deck and may results in the release of asbestos debris.
- III Asbestos is located or assumed in this space as either asbestos fireproofing overspray or as asbestos pipe insulation. Opening of these spaces and removal of concealed asbestos materials is only recommended where renovation or maintenance activities requires access to these areas.
- III Removal only prior to demolition or renovation activities which may impact this asbestos application is recommended.
- IV **Asbestos fireproofing insulation in this are is noted to be in fair to poor condition with asbestos materials observed on the floor. Access to this area is restricted to persons equipped and trained in Moderate Risk Asbestos work procedures. Work in this space must be performed utilizing High Risk Asbestos work procedures as required to prevent exposure and asbestos material dissemination to other areas of the facility.**
- V Asbestos pipe insulation is located within boxed columns in this area. Pipe quantity is included in the total length for this area.
- VI Due to mechanical equipment in this room, removal of textured ceiling is next to impossible within equipment demolition. Removal of this asbestos application should be performed only prior to renovations or mechanical work in this room.
- VII Finished drywall applications located in circa 1967 to 1977 renovation areas may contain asbestos drywall filler. Confirmatory sampling of drywall filler applications must be performed prior to any renovation or maintenance work which may impact drywall applications of this vintage.

FUNCTIONAL AREA and description)	ID CODE DESCRIPTION AND APPLICATION	VIS	CONDITION	ACCESSIBILITY	FRIABILITY	QUANTITY	UNIT	FOOT NOTES
-------------------------------------	--	-----	-----------	---------------	------------	----------	------	---------------

**PGRH SITE - PRINCE GEORGE REGIONAL BUILDING**

**GENERAL NOTES:**

- 1 Functional area numbers are representative of the survey drawings provided with this report and may not indicate actual room numbers.
- 2 Only known and visible asbestos materials are listed. There is a distinct possibility that asbestos materials may be present in wall, ceiling and floor void spaces not identified in this report. Any suspect asbestos materials located in void spaces should be sampled for asbestos content prior to disturbance.
- 3 This building was constructed in Circa 1973 - all previous sampling of insulating cement materials on pipe fittings were found to be non-asbestos. It is assumed for the purpose of this assessment that all pipe insulation in this building and adjoining tunnel are non-asbestos.

FRIABILITY	VIS (VISIBILITY)
HIGH (easily crumbled by hand)	Applications are exposed unless otherwise noted
MED (not easily crumbled by hand)	SUC Suspected Under Covering Carpeting
LOW (tool or implement required to disturb)	SUV Suspected Under Covering Vinyl Sheeting
	SUL Suspected Under Covering Laminate Flooring
	SAF Suspected Above Fixed Ceiling
	AF Application Above Fixed Ceiling
	2-L Suspected 2-Layers of Asbestos Flooring
	S Suspect Application - No Access to Room
	W W Application within Wall Cavity or Valance
	WB Application within Boxed Column
	L Low Application Height <8'
<b>ACCESSIBILITY</b>	
LOW (material concealed or enclosed)	
MED (material exposed but out of hand reach)	
HIGH (material exposed and within hand reach)	
<b>CONDITION</b>	
GOOD (no visible signs of disturbance)	
FAIR (visible signs of disturbance, no debris noted on ground)	
POOR (delamination/deterioration evident/imminent, may have debris on ground)	

**SURVEYED MATERIALS DESCRIPTIONS AND SAMPLE NUMBERS**

ID CODE AND VISUAL DESCRIPTION	SAMPLE No.	ASBESTOS CONTENT
A1 MK 6 Fireproofing Insulation - Basement Crawlspace	1992 Hansen Sample # 44	15% Chrysotile Asbestos
A1 MK 6 Fireproofing Insulation Debris - Prep/Sterile Stores 0028	743-11	10-20% Chrysotile Asbestos
A2 Re-Application AAD Type 5 Cementitious Fireproofing - 0028 Prep/Sterile Stores Ceiling Space	743-10	Non-Asbestos
A3 AAD Fluffy Re-Application Fireproofing - Bulk Stores 0017	743-09	Non-Asbestos
A4 Fireproofing Debris Within Wall Cavity - Elevator Machine Room 0017A (off bulk stores)	743-21	40-50% Amosite Asbestos
A5 Fluffy, Fibrous Fireproofing Insulation Debris - 0199 Health Record Ceiling (old duct hanger)	743-17	40-50% Amosite Asbestos
A5 Fluffy, Fibrous Fireproofing Insulation Debris -0152 Mechanical Room 29 (floor behind electrical equipment)	Not Sampled	Known Asbestos Application
A6 Ceiling Texture - 0220 Mechanical Room 1	1990 PHH Sample # 76	5% Chrysotile Asbestos
B1 Pre-Formed Mag-Block Pipe Insulation - Basement North Stairwell ST07	1992 Hansen Sample # 10	30% Amosite & 10% Chrysotile
C1 Soft Grey Fibrous Insulating Cement on Hot Water and Rain Water Leader Pipe Fittings - 5th Floor Redundant Chillier Room (Roof)	1991 PHH Sample # 12 & 13	15% Chrysotile Asbestos
C2 Soft Chalky Non-Fibrous Insulating Cement on Hot Water Pipe Fittings - Mechanical Room 12	Numerous PHH & Hansen Samples	Non-Asbestos
C3 Insulating Cement on Domestic Cold Water Lines - 0220 Mechanical Room 1	743-19	10-20% Chrysotile Asbestos
C4 Insulating Cement on Heat Water Heating Lines - 0220 Mechanical Room 1	743-20	Non-Asbestos
D1 Domestic Hot Water Tank Insulation - Mechanical Room 12	1990 PHH Sample # 92	85% Chrysotile Asbestos
G1 2x4' Pinholed Vinyl Faced Compressed Cellulose Ceiling Tile - Bulk Stores 0017	Not Sampled	Known Non-Asbestos Application
G2 2x4' Short Omni-Directional Fissures with Large and Small Pin Holed Ceiling Tile - Corridor 0034	Not Sampled	Known Non-Asbestos Application
G3 2x4' Large and Small Holed Ceiling Tile - Sorting Area 1107	1990 PHH Sample # 71	Non-Asbestos
H1 12x12" Beige with Thin Short Brown Streaked Vinyl Floor Tile - Basement South Stairwell ST01	743-05	1-10% Chrysotile Asbestos
H2 12x12" Blue with Minimal White Streaked Vinyl Floor Tile - Bulk Stores 0017	1993 Hansen Sample # 39	10% Chrysotile Asbestos
H3 12x12" Beige with Long Brown and White Streaked Vinyl Floor Tile - Bulk Stores 0017	743-08	1-10% Chrysotile Asbestos

FUNCTIONAL AREA and description)	ID CODE DESCRIPTION AND APPLICATION	VIS	CONDITION	ACCESSIBILITY	FRIABILITY	QUANTITY	UNIT	FOOT NOTES
-------------------------------------	--	-----	-----------	---------------	------------	----------	------	---------------

**PGRH SITE - PRINCE GEORGE REGIONAL BUILDING**

**SURVEYED MATERIALS DESCRIPTIONS AND SAMPLE NUMBERS**

ID CODE AND VISUAL DESCRIPTION	SAMPLE No.	ASBESTOS CONTENT
H4 12x12" Beige with Cream and Brown Small Spotted Vinyl Floor Tile - Corridor 0052	743-12	Non-Asbestos
H5 9x9" Beige with Long Rust Streaked Vinyl Floor Tile - 0221 Mechanical Room 1	1992 Hansen Sample # 5	18% Chrysotile Asbestos
I1 Grey with Brown and Cream Spotted Jute Backed Marmoleum Sheet Flooring - Processed Stores 0018	Not Sampled	Known Non-Asbestos Application
I2 Pink with Grey and White Spotted Tarkett Vinyl Floor Sheeting - Office 0022	Not Sampled	Known Non-Asbestos Application
I3 Beige, Brown and Cream Square Mosaic Pattern Paper Backed Corlon Vinyl Floor Sheeting - Instruments 0025	1993 Hansen Sample # 32	65% Chrysotile Asbestos
I4 Light Brown, Beige and Cream Random Size Square Mosaic Pattern Paper Backed Corlon Vinyl Floor Sheeting - Corridor 0090	1993 Hansen Sample # 6	60% Chrysotile Asbestos
I5 3 Tone Orange Random Size Square Patterned Paper Backed Corlon Vinyl Floor Sheeting - Washroom 0109	1993 Hansen Sample # 28	65% Chrysotile Asbestos
I6 3 tone Brown Random Size Square Patterned Paper Backed Corlon Vinyl Floor Sheeting - Vestibule 0203	1993 Hansen Sample # 2	60% Chrysotile Asbestos
I7 Dark Brown, Light Brown and Cream Square Mosaic Patterned Paper Backed Corlon Vinyl Floor Sheeting - Plant Services Reception 0083	1993 Hansen Sample # 7	65% Chrysotile Asbestos
I8 Beige with Beige and Brown Long Streaked Foam Core Resilient Sheet Flooring - Shower Room 2121	743-24	Non-Asbestos
J1 Cement Asbestos Rain Water Leader Piping - Loading Dock 0005	Not Sampled	Known Asbestos Application
K1 Flexible Duct Vibration Dampener Joint - Mechanical Room 18 Patient Exhaust Fan	Not Sampled	Known Asbestos Application
K2 Sanitary Sewer Union Packing - East Wing	Not Sampled	Known Asbestos Application
M1 Red Duct Mastic - 0274 Dietician Office	743-18	Non-Asbestos
M2 Red Duct Mastic - 4th Floor West Wing Renovation Area	2006 Napp Sample	1-10% Chrysotile Asbestos
M3 Silver Duct Mastic - 4th Floor West Wing Renovation Area	2006 Napp Sample	1-10% Chrysotile Asbestos
P1 Drywall Filler - Garbage Room 0001	743-06	Non-Asbestos
P1 Drywall Filler - Bulk Stores 0017	743-07	Non-Asbestos
P1 Drywall Filler - Mechanical Room 12 (1973 Renovation Area)	743-13	1-10% Chrysotile Asbestos
P1 Drywall Filler - Mechanical Room 26	743-15	Non-Asbestos
P2 Drywall Filler - Mechanical Store Room 0108	743-16	Non-Asbestos
P3 Drywall Filler - Inter Link Shaft 1040A	743-22	Non-Asbestos
P3 Drywall Filler - OR Nurses Corridor 1021	743-23	Non-Asbestos
V1 Fire Door Insulation - Housekeeping Door 0080	743-14	Non-Asbestos

## ASBESTOS EXPOSURE AND CONTROL PLAN ASBESTOS CONTAINING BUILDING MATERIALS SUMMARY

### PGRH SITE – PRINCE GEORGE REGIONAL HOSPITAL BUILDING Prince George, BC

The following asbestos applications have been identified within the above noted facility. The attached asbestos location drawings and spreadsheets should be reviewed for the exact location of all known asbestos applications within this facility.

#### **FRIABLE ASBESTOS APPLICATIONS**

- Asbestos insulating cement is located on the Domestic Hot Water Tanks located in MR 12.
- Asbestos insulating cement is located on pipe fittings in random areas throughout the building. (See special note 1)
- Asbestos pipe insulation is located within ceiling spaces and wall cavities of the circa 1950 constructed area of the building.
- Asbestos paper backed vinyl floor sheeting is located in various areas throughout the building.
- Asbestos fireproofing spray is located on ceiling decking in random areas throughout the building.
- Asbestos fireproofing debris is located within wall cavities in current and abated areas of the building.

#### **NON-FRIABLE ASBESTOS APPLICATIONS**

- Asbestos drywall filler is located on random finished drywall applications within the building.
- Woven asbestos textiles are located as flexible duct vibration dampeners on Exhaust Fans 1 and 2 in Mechanical Room 18.
- Cement asbestos rainwater leader piping is located in various exposed and concealed areas throughout the building.

#### **SUSPECT ASBESTOS APPLICATIONS**

- Duct mastic located on mechanical ductwork is reported to contain asbestos. Sampling of any white filled fire doors should be collected prior to disturbance.
- Insulated wood panel doors may be located within the building. Sampling of any white filled fire doors should be collected prior to disturbance.

#### **SPECIAL NOTES**

1. Asbestos and non-asbestos insulating cement materials are located throughout this building. Through sampling, it is concluded that post 1973 insulating cement applications are non-asbestos. Unless confirmed as being non-asbestos through sample analysis or confirmation of application date, all insulating cement applications in this building must be considered to contain asbestos and be treated as such.
2. Due to poor condition asbestos containing materials limited or restricted access to the flowing areas is required to prevent potential exposure to asbestos fibers:
  - Crawlspace area beneath CSR;
  - Ceiling space above suspended T-Bar ceilings in the general Hematology, Chemistry and Blood Lab area;
  - Fourth floor rooftop Mechanical Room 4074 as identified on the drawings attached to this report.

ASBESTOS CONTAINING MATERIAL LOCATIONS  
AND PRIORITIZED ABATEMENT COST ESTIMATES

FUNCTIONAL AREA (and description)	ID CODE DESCRIPTION AND APPLICATION	VIS	CONDITION	ACCESSIBILITY	FRIABILITY	QUANTITY	UNIT	ABATEMENT		REAPPLICATION		COST PER APPLICATION	REMOVAL PRIORITY	FOOT NOTES
								RATE	COST	RATE	COST			

**PGRH SITE - PRINCE GEORGE REGIONAL BUILDING**

APPLICATIONS LOCATED RANDOMLY THROUGHOUT THE FACILITY

J1 - Cement Asbestos Piping	Good	Low - High	Low		LF	\$ 3.00	\$ -	\$ -	\$ -	\$ -	\$ -	3	///
K2 - Sewer Unions	Fair	Low - Mod	Moderate		Unit	\$ 3.00	\$ -	\$ -	\$ -	\$ -	\$ -	3	///

**SUB-BASEMENT**

Mechanical Room 12	D1 - 600gal DHWT	Fair	High	High	150	SF	\$ 35.00	\$ 5,250.00	\$ 15.00	\$ 2,250.00	\$ 7,500.00	2	
Mechanical Room 12	D1 - 1200gal DHWT	Fair	High	High	300	SF	\$ 35.00	\$ 10,500.00	\$ 15.00	\$ 4,500.00	\$ 15,000.00	2	
Crawlspace Under CSD	A1 - Fireproofing Spray	Fair	Moderate	High	5000	SF	\$ 16.00	\$ 80,000.00	\$ 3.75	\$ 18,750.00	\$ 98,750.00	2	IV

**GROUND FLOOR**

0001	Garbage Room	A1 - Fireproofing Spray	WB	Fair	Moderate	High	100	SF	\$ 50.00	\$ 5,000.00	\$ 13.00	\$ 1,300.00	\$ 6,300.00	3	
0005A	Pipe Chase	A1 - Fireproofing Debris	WW	Fair	Moderate	High	25	SF	\$ 50.00	\$ 1,250.00	\$ -	\$ -	\$ 1,250.00	3	///
0005B	Pipe Chase	A1 - Fireproofing Debris	WW	Fair	Moderate	High	35	SF	\$ 50.00	\$ 1,750.00	\$ -	\$ -	\$ 1,750.00	3	///
0017	Bulk Stores	H2 / H3 - Floor Tile		Fair	Moderate	High	2340	SF	\$ 2.00	\$ 4,680.00	\$ 7.00	\$ 16,380.00	\$ 21,060.00	2	
0017	Bulk Stores	A1 - Fireproofing Spray	WB	Fair	Moderate	High	600	SF	\$ 50.00	\$ 30,000.00	\$ 13.00	\$ 7,800.00	\$ 37,800.00	3	
0018	Processed Stores Entry	A1 - Fireproofing Spray	AT	Fair	Moderate	High	50	SF	\$ 45.00	\$ 2,250.00	\$ 4.00	\$ 200.00	\$ 2,450.00	1	
0021	Office	A1 - Fireproofing Spray	AT	Fair	Moderate	High	25	SF	\$ 45.00	\$ 1,125.00	\$ 4.00	\$ 100.00	\$ 1,225.00	1	
0023	Stores Dispatch	A1 - Fireproofing Spray	AT	Fair	Moderate	High	25	SF	\$ 45.00	\$ 1,125.00	\$ 8.00	\$ 200.00	\$ 1,325.00	1	
0025	Instruments	I3 - Floor Sheeting		Good	Moderate	High	290	SF	\$ 6.00	\$ 1,740.00	\$ 7.00	\$ 2,030.00	\$ 3,770.00	3	
0026	Prep/Sterile Stores	H3 - Floor Tile		Good	Moderate	High	2150	SF	\$ 2.00	\$ 4,300.00	\$ 7.00	\$ 15,050.00	\$ 19,350.00	3	
0026A	Prep/Sterile	H2 - Floor Tile		Good	Moderate	High	1280	SF	\$ 2.00	\$ 2,560.00	\$ 7.00	\$ 8,960.00	\$ 11,520.00	3	
0026	Prep/Sterile Stores	A1 - Fireproofing Spray		Fair	Moderate	High	750	SF	\$ 30.00	\$ 22,500.00	\$ 9.00	\$ 6,750.00	\$ 29,250.00	1	
0029	Office	H3 - Floor Tile		Good	Moderate	High	100	SF	\$ 3.00	\$ 300.00	\$ 7.00	\$ 700.00	\$ 1,000.00	3	
0032	Corridor	H1 / H4 - Floor Tile		Good	Moderate	High	1392	SF	\$ 2.00	\$ 2,784.00	\$ 7.00	\$ 9,744.00	\$ 12,528.00	3	
0032	Corridor	A1 - Fireproofing Spray	WB	Fair	Moderate	High	450	SF	\$ 50.00	\$ 22,500.00	\$ 13.00	\$ 5,850.00	\$ 28,350.00	3	///
0034	Corridor	I3 - Floor Sheeting		Good	Moderate	High	1200	SF	\$ 5.00	\$ 6,000.00	\$ 7.00	\$ 8,400.00	\$ 14,400.00	3	
0034A	Storage Closet	I3 - Floor Sheeting		Good	Moderate	High	25	SF	\$ 6.00	\$ 150.00	\$ 7.00	\$ 175.00	\$ 325.00	3	
0035	Laundry Linen Finishing	A1 - Fireproofing Spray	WW	Fair	Moderate	High	50	SF	\$ 50.00	\$ 2,500.00	\$ 13.00	\$ 650.00	\$ 3,150.00	3	///
0036	Vestibule/Sterile Storage	A1 - Fireproofing Spray	AT	Fair	Moderate	High	150	SF	\$ 45.00	\$ 6,750.00	\$ 8.00	\$ 1,200.00	\$ 7,950.00	1	
0037	Mechanical Room	A1 - Fireproofing Spray	WB	Fair	Moderate	High	100	SF	\$ 50.00	\$ 5,000.00	\$ 13.00	\$ 1,300.00	\$ 6,300.00	3	///
0044	Central Viewing	I3 - Floor Sheeting		Good	Moderate	High	270	SF	\$ 6.00	\$ 1,620.00	\$ 7.00	\$ 1,890.00	\$ 3,510.00	3	
0045	Autopsy Preparation	I3 - Floor Sheeting		Good	Moderate	High	270	SF	\$ 6.00	\$ 1,620.00	\$ 7.00	\$ 1,890.00	\$ 3,510.00	3	
0046	Storage	I3 - Floor Sheeting		Good	Moderate	High	30	SF	\$ 6.00	\$ 180.00	\$ 7.00	\$ 210.00	\$ 390.00	3	
0048	Washroom	I3 - Floor Sheeting		Good	Moderate	High	50	SF	\$ 6.00	\$ 300.00	\$ 7.00	\$ 350.00	\$ 650.00	3	
0049	Autopsy	I3 - Floor Sheeting		Good	Moderate	High	320	SF	\$ 6.00	\$ 1,920.00	\$ 7.00	\$ 2,240.00	\$ 4,160.00	3	
0050	Female Staff Washroom	I3 - Floor Sheeting		Good	Moderate	High	130	SF	\$ 6.00	\$ 780.00	\$ 7.00	\$ 910.00	\$ 1,690.00	3	
0051	Female Staff Shower	I3 - Floor Sheeting		Good	Moderate	High	50	SF	\$ 6.00	\$ 300.00	\$ 7.00	\$ 350.00	\$ 650.00	3	
0052	Washroom	I3 - Floor Sheeting		Good	Moderate	High	30	SF	\$ 6.00	\$ 180.00	\$ 7.00	\$ 210.00	\$ 390.00	3	
0053	Female Locker Room	I3 - Floor Sheeting		Good	Moderate	High	2020	SF	\$ 5.00	\$ 10,100.00	\$ 7.00	\$ 14,140.00	\$ 24,240.00	3	
0054	Store Room & Vestibule	I3 - Floor Sheeting		Good	Moderate	High	130	SF	\$ 6.00	\$ 780.00	\$ 7.00	\$ 910.00	\$ 1,690.00	3	

ASBESTOS CONTAINING MATERIAL LOCATIONS  
AND PRIORITIZED ABATEMENT COST ESTIMATES

04/10/2007

FUNCTIONAL AREA and description)	ID CODE DESCRIPTION AND APPLICATION	VIS	CONDITION	ACCESSIBILITY	FRIABILITY	QUANTITY	UNIT	ABATEMENT		REAPPLICATION		COST PER APPLICATION	REMOVAL FOOT PRIORITY NOTES		
								RATE	COST	RATE	COST				
<b>PGRH SITE - PRINCE GEORGE REGIONAL BUILDING</b>															
<b>GROUND FLOOR Con't</b>															
0055	Corridor		I3 - Floor Sheeting		Good	Moderate	High	750	SF	\$ 6.00	\$ 4,500.00	\$ 7.00	\$ 5,250.00	\$ 9,750.00	3
0057	Male Staff Lockers		I7 - Floor Sheeting		Good	Moderate	High	600	SF	\$ 6.00	\$ 3,600.00	\$ 7.00	\$ 4,200.00	\$ 7,800.00	3
0058	Male Staff Washroom		I7 - Floor Sheeting		Good	Moderate	High	100	SF	\$ 6.00	\$ 600.00	\$ 7.00	\$ 700.00	\$ 1,300.00	3
0059	Corridor		I3 - Floor Sheeting		Good	Moderate	High	1100	SF	\$ 5.00	\$ 5,500.00	\$ 7.00	\$ 7,700.00	\$ 13,200.00	3
0062	Corridor		I3 - Floor Sheeting		Good	Moderate	High	420	SF	\$ 6.00	\$ 2,520.00	\$ 7.00	\$ 2,940.00	\$ 5,460.00	3
0063	Plant Services Reception		I7 - Floor Sheeting		Good	Moderate	High	185	SF	\$ 6.00	\$ 1,110.00	\$ 7.00	\$ 1,295.00	\$ 2,405.00	3
0065	Key Cutting Area		I3 - Floor Sheeting		Good	Moderate	High	110	SF	\$ 6.00	\$ 660.00	\$ 7.00	\$ 770.00	\$ 1,430.00	3
0066	Plan		I7 - Floor Sheeting		Good	Moderate	High	95	SF	\$ 6.00	\$ 570.00	\$ 7.00	\$ 665.00	\$ 1,235.00	3
0067	Office		I7 - Floor Sheeting		Good	Moderate	High	160	SF	\$ 6.00	\$ 960.00	\$ 7.00	\$ 1,120.00	\$ 2,080.00	3
0068	Office		I7 - Floor Sheeting		Good	Moderate	High	110	SF	\$ 6.00	\$ 660.00	\$ 7.00	\$ 770.00	\$ 1,430.00	3
0080	Housekeeping (former offi		I7 - Floor Sheeting		Good	Moderate	High	100	SF	\$ 6.00	\$ 600.00	\$ 7.00	\$ 700.00	\$ 1,300.00	3
0083	Male Locker Vestibule		I7 - Floor Sheeting		Good	Moderate	High	30	SF	\$ 6.00	\$ 180.00	\$ 7.00	\$ 210.00	\$ 390.00	3
0086	Lockers & Washroom		H1 - Floor Tile		Good	Moderate	High	130	SF	\$ 3.00	\$ 390.00	\$ 7.00	\$ 910.00	\$ 1,300.00	3
0087	Corridor to Sterile Stores		H1 - Floor Tile		Good	Moderate	High	50	SF	\$ 3.00	\$ 150.00	\$ 7.00	\$ 350.00	\$ 500.00	3
0088	Lockers & Washroom		H1 - Floor Tile		Good	Moderate	High	130	SF	\$ 3.00	\$ 390.00	\$ 7.00	\$ 910.00	\$ 1,300.00	3
0089	Storage / Lunch Room		H1 - Floor Tile		Good	Moderate	High	450	SF	\$ 3.00	\$ 1,350.00	\$ 7.00	\$ 3,150.00	\$ 4,500.00	3
0090	Corridor		I4 - Floor Sheeting		Good	Moderate	High	770	SF	\$ 6.00	\$ 4,620.00	\$ 7.00	\$ 5,390.00	\$ 10,010.00	3
0091A	Mechanical Room 7		B1 - Pipe Insulation		Fair	Moderate	High	50	LF	\$ 30.00	\$ 1,500.00	\$ 15.00	\$ 750.00	\$ 2,250.00	1
0091A	Mechanical Room 7		C1 - Insulating Cement		Fair	Moderate	High	75	FTG	\$ 125.00	\$ 9,375.00	\$ 35.00	\$ 2,625.00	\$ 12,000.00	1
0100	Blood Bank		I4 - Floor Sheeting		Good	Moderate	High	750	SF	\$ 6.00	\$ 4,500.00	\$ 7.00	\$ 5,250.00	\$ 9,750.00	3
0100	Blood Bank		B1 - Pipe Insulation	AT	Fair	Moderate	High	120	LF	\$ 30.00	\$ 3,600.00	\$ 15.00	\$ 1,800.00	\$ 5,400.00	1
0100A	Corridor		B1 - Pipe Insulation	AT	Fair	Moderate	High	70	LF	\$ 30.00	\$ 2,100.00	\$ 15.00	\$ 1,050.00	\$ 3,150.00	IMM
0100A	Corridor		I4 - Floor Sheeting		Good	Moderate	High	175	SF	\$ 6.00	\$ 1,050.00	\$ 7.00	\$ 1,225.00	\$ 2,275.00	3
0101	Haematology		I4 - Floor Sheeting		Good	Moderate	High	1520	SF	\$ 5.00	\$ 7,600.00	\$ 7.00	\$ 10,640.00	\$ 18,240.00	3
0101	Haematology		B1 - Pipe Insulation	AT	Poor	High	High	230	LF	\$ 35.00	\$ 8,050.00	\$ 15.00	\$ 3,450.00	\$ 11,500.00	IMM
0101	Haematology		B1 - Pipe Insulation	W W	Fair	Moderate	High	100	LF	\$ 25.00	\$ 2,500.00	\$ 15.00	\$ 1,500.00	\$ 4,000.00	2 V
0103	Haematology Supervisor		I4 - Floor Sheeting		Good	Moderate	High	55	SF	\$ 6.00	\$ 330.00	\$ 7.00	\$ 385.00	\$ 715.00	3
0104	Accessioning		I5 - Floor Sheeting		Good	Moderate	High	180	SF	\$ 6.00	\$ 1,080.00	\$ 7.00	\$ 1,260.00	\$ 2,340.00	3
0104	Accessioning		B1 - Pipe Insulation	AT	Fair	Moderate	High	70	LF	\$ 30.00	\$ 2,100.00	\$ 15.00	\$ 1,050.00	\$ 3,150.00	IMM
0105	Flouro Mico		I4 - Floor Sheeting		Good	Moderate	High	460	SF	\$ 6.00	\$ 2,760.00	\$ 7.00	\$ 3,220.00	\$ 5,980.00	3
0106	Chemistry		I4 - Floor Sheeting		Good	Moderate	High	440	SF	\$ 6.00	\$ 2,640.00	\$ 7.00	\$ 3,080.00	\$ 5,720.00	3
0106	Chemistry		B1 - Pipe Insulation	AT	Fair	Moderate	High	130	LF	\$ 30.00	\$ 3,900.00	\$ 15.00	\$ 1,950.00	\$ 5,850.00	IMM
0108	Lab Wash-up		I6 - Floor Sheeting		Good	Moderate	High	170	SF	\$ 6.00	\$ 1,020.00	\$ 7.00	\$ 1,190.00	\$ 2,210.00	3
0108	Lab Wash-up		B1 - Pipe Insulation	SAF	Fair	Low	High	12	LF	\$ 30.00	\$ 360.00	\$ 15.00	\$ 180.00	\$ 540.00	3
0109	Washroom		I5 - Floor Sheeting		Good	Moderate	High	40	SF	\$ 6.00	\$ 240.00	\$ 7.00	\$ 280.00	\$ 520.00	3
0110	Corridor		I3/ I4 - Floor Sheeting		Good	Moderate	High	540	SF	\$ 6.00	\$ 3,240.00	\$ 7.00	\$ 3,780.00	\$ 7,020.00	3
0111	Corridor		I4 - Floor Sheeting	2-L	Good	Moderate	High	450	SF	\$ 6.00	\$ 2,700.00	\$ 7.00	\$ 3,150.00	\$ 5,850.00	3



ASBESTOS CONTAINING MATERIAL LOCATIONS  
AND PRIORITIZED ABATEMENT COST ESTIMATES

FUNCTIONAL AREA and description)	ID CODE DESCRIPTION AND APPLICATION	VIS	CONDITION	ACCESSIBILITY	FRIABILITY	QUANTITY	UNIT	ABATEMENT		REAPPLICATION		COST PER APPLICATION	REMOVAL PRIORITY	FOOT NOTES	
								RATE	COST	RATE	COST				
<b>PGRH SITE - PRINCE GEORGE REGIONAL BUILDING</b>															
<b>GROUND FLOOR Con't</b>															
0111 Corridor	B1 - Pipe Insulation	AT	Fair		High	High	20	LF	\$ 30.00	\$ 600.00	\$ 15.00	\$ 300.00	\$ 900.00	IMM	
0112 Corridor	I4 - Floor Sheeting		Good	Moderate	High	High	190	SF	\$ 6.00	\$ 1,140.00	\$ 7.00	\$ 1,330.00	\$ 2,470.00		3
0112 Corridor	B1 - Pipe Insulation	AT	Good		High	High	20	LF	\$ 30.00	\$ 600.00	\$ 15.00	\$ 300.00	\$ 900.00	2	
0113 Corridor	B1 - Pipe Insulation	W W	Fair		High	High	12	LF	\$ 25.00	\$ 300.00	\$ 15.00	\$ 180.00	\$ 480.00	2	
0113 Corridor	B1 - Pipe Insulation	W W	Fair	Moderate	High	High	15	LF	\$ 25.00	\$ 375.00	\$ 15.00	\$ 225.00	\$ 600.00	2	
0114 Corridor	I4 - Floor Sheeting		Good	Moderate	High	High	400	SF	\$ 6.00	\$ 2,400.00	\$ 7.00	\$ 2,800.00	\$ 5,200.00		3
0116 Pathology Office	I5 - Floor Sheeting		Good	Moderate	High	High	115	SF	\$ 6.00	\$ 690.00	\$ 7.00	\$ 805.00	\$ 1,495.00		3
0117 Pathology Office	I5 - Floor Sheeting		Good	Moderate	High	High	115	SF	\$ 6.00	\$ 690.00	\$ 7.00	\$ 805.00	\$ 1,495.00		3
0118 Pathology Office	I5 - Floor Sheeting		Good	Moderate	High	High	115	SF	\$ 6.00	\$ 690.00	\$ 7.00	\$ 805.00	\$ 1,495.00		3
0120 Chemistry	I4 / I5 - Floor Sheeting		Good	Moderate	High	High	400	SF	\$ 6.00	\$ 2,400.00	\$ 7.00	\$ 2,800.00	\$ 5,200.00		3
0120 Chemistry	B1 - Pipe Insulation	AT	Poor		High	High	50	LF	\$ 30.00	\$ 1,500.00	\$ 15.00	\$ 750.00	\$ 2,250.00	IMM	
0121 Accessioning	I4 / I5 - Floor Sheeting		Good	Moderate	High	High	700	SF	\$ 6.00	\$ 4,200.00	\$ 7.00	\$ 4,900.00	\$ 9,100.00		3
0127 Infection Control Office	I5 - Floor Sheeting		Good	Moderate	High	High	90	SF	\$ 6.00	\$ 540.00	\$ 7.00	\$ 630.00	\$ 1,170.00		3
0128 Washroom	I5 - Floor Sheeting		Good	Moderate	High	High	65	SF	\$ 6.00	\$ 390.00	\$ 7.00	\$ 455.00	\$ 845.00		3
0129 Histopathology C/R Room	I6 - Floor Sheeting		Good	Moderate	High	High	130	SF	\$ 6.00	\$ 780.00	\$ 7.00	\$ 910.00	\$ 1,690.00		3
0130 Histopathology Storage	I6 - Floor Sheeting		Good	Moderate	High	High	120	SF	\$ 6.00	\$ 720.00	\$ 7.00	\$ 840.00	\$ 1,560.00		3
0130A Histopathology Storage	I6 - Floor Sheeting		Good	Moderate	High	High	120	SF	\$ 6.00	\$ 720.00	\$ 7.00	\$ 840.00	\$ 1,560.00		3
0132 Computer Training Room	I5 - Floor Sheeting	SUL	Good	Low	High	High	270	SF	\$ 6.00	\$ 1,620.00	\$ 7.00	\$ 1,890.00	\$ 3,510.00		3
0133 Conference Room	I5 - Floor Sheeting		Good	Moderate	High	High	440	SF	\$ 6.00	\$ 2,640.00	\$ 7.00	\$ 3,080.00	\$ 5,720.00		3
0134 Corridor	I4 - Floor Sheeting		Good	Moderate	High	High	60	SF	\$ 6.00	\$ 360.00	\$ 7.00	\$ 420.00	\$ 780.00		3
0135 Media	I6 - Floor Sheeting		Good	Moderate	High	High	250	SF	\$ 6.00	\$ 1,500.00	\$ 7.00	\$ 1,750.00	\$ 3,250.00		3
0135A Storage	I6 - Floor Sheeting		Good	Moderate	High	High	25	SF	\$ 6.00	\$ 150.00	\$ 7.00	\$ 175.00	\$ 325.00		3
0135B Storage	I6 - Floor Sheeting		Good	Moderate	High	High	60	SF	\$ 6.00	\$ 360.00	\$ 7.00	\$ 420.00	\$ 780.00		3
0137 Bacteriology	I6 - Floor Sheeting		Good	Moderate	High	High	1160	SF	\$ 6.00	\$ 6,960.00	\$ 7.00	\$ 8,120.00	\$ 15,080.00		3
0143 Office	B1 - Pipe Insulation	AT	Good	Moderate	High	High	12	LF	\$ 30.00	\$ 360.00	\$ 15.00	\$ 180.00	\$ 540.00	2	
0144 Office	B1 - Pipe Insulation	AT	Good	Moderate	High	High	14	LF	\$ 30.00	\$ 420.00	\$ 15.00	\$ 210.00	\$ 630.00	2	
0152 Mechanical Room 29	A5 - Fireproofing Debris		Poor		High	High	350	SF	\$ 12.00	\$ 4,200.00	\$ -	\$ -	\$ 4,200.00	IMM	I
0152 Mechanical Room 29	B1 - Pipe Insulation		Poor		High	High	130	LF	\$ 25.00	\$ 3,250.00	\$ 15.00	\$ 1,950.00	\$ 5,200.00	IMM	
0152A Mechanical Space	B1 - Pipe Insulation		Fair		High	High	15	LF	\$ 25.00	\$ 375.00	\$ 15.00	\$ 225.00	\$ 600.00	1	
0152A Mechanical Space	B1 - Pipe Insulation	AF	Fair	Low	High	High	20	LF	\$ 40.00	\$ 800.00	\$ 15.00	\$ 300.00	\$ 1,100.00		3
0152A Mechanical Space	C1 - Insulating Cement		Fair		High	High	8	FTG	\$ 125.00	\$ 1,000.00	\$ 35.00	\$ 280.00	\$ 1,280.00	1	
0157 Electrical Room 1	B1 - Pipe Insulation		Good		High	High	70	LF	\$ 25.00	\$ 1,750.00	\$ 15.00	\$ 1,050.00	\$ 2,800.00	2	
0158 Computer Server	B1 - Pipe Insulation		Good		High	High	20	LF	\$ 25.00	\$ 500.00	\$ 15.00	\$ 300.00	\$ 800.00	2	
0194 Corridor	B1 - Pipe Insulation	AT	Good	Moderate	High	High	70	LF	\$ 30.00	\$ 2,100.00	\$ 15.00	\$ 1,050.00	\$ 3,150.00	2	
0194 Corridor	C1 - Insulating Cement	AT	Good	Moderate	High	High	30	FTG	\$ 125.00	\$ 3,750.00	\$ 35.00	\$ 1,050.00	\$ 4,800.00	2	
0195 Office	A5 - Fireproofing Debris	AT	Poor	Low	High	High	70	SF	\$ 8.00	\$ 560.00	\$ -	\$ -	\$ 560.00	3	//
0196 Washroom	H1 - Floor Tile		Good	Moderate	High	High	25	SF	\$ 3.00	\$ 75.00	\$ 7.00	\$ 175.00	\$ 250.00		3

ASBESTOS CONTAINING MATERIAL LOCATIONS  
AND PRIORITIZED ABATEMENT COST ESTIMATES

FUNCTIONAL AREA and description)	ID CODE DESCRIPTION AND APPLICATION	VIS	CONDITION	ACCESSIBILITY	FRIABILITY	QUANTITY	UNIT	ABATEMENT RATE	ABATEMENT COST	REAPPLICATION RATE	REAPPLICATION COST	COST PER APPLICATION	REMOVAL PRIORITY	FOOT NOTES
<b>PGRH SITE - PRINCE GEORGE REGIONAL BUILDING</b>														
<b>GROUND FLOOR Con't</b>														
0197 TV Repair Room	H1 - Floor Tile		Good	Moderate	High	100	SF	\$ 3.00	\$ 300.00	\$ 7.00	\$ 700.00	\$ 1,000.00	3	
0198 Storage	H1 - Floor Tile		Good	Moderate	High	115	SF	\$ 3.00	\$ 345.00	\$ 7.00	\$ 805.00	\$ 1,150.00	3	
0199 Health Records Storage	A5 - Fireproofing Debris		Poor	Low	High	1300	SF	\$ 4.00	\$ 5,200.00	\$ -	\$ -	\$ 5,200.00	3	//
0199 Health Records Wall Cavit	A5 - Fireproofing Debris		Poor	Low	High	150	SF	\$ 12.00	\$ 1,800.00	\$ -	\$ -	\$ 1,800.00	3	//
0199 Health Records Storage	B1 - Pipe Insulation		Fair	High	High	10	LF	\$ 25.00	\$ 250.00	\$ 15.00	\$ 150.00	\$ 400.00	1	
0199 Health Records Storage	C1 - Insulating Cement		Poor	High	High	2	FTG	\$ 125.00	\$ 250.00	\$ 35.00	\$ 70.00	\$ 320.00	IMM	
0201 Corridor	B1 - Pipe Insulation	AT		Moderate	High	40	LF	\$ 30.00	\$ 1,200.00	\$ 15.00	\$ 600.00	\$ 1,800.00	2	
0203 Vestibule	I6 - Floor Sheeting		Good	Moderate	High	450	SF	\$ 6.00	\$ 2,700.00	\$ 7.00	\$ 3,150.00	\$ 5,850.00	3	
0203A Vestibule	B1 - Pipe Insulation	AT	Fair	Moderate	High	35	LF	\$ 30.00	\$ 1,050.00	\$ 15.00	\$ 525.00	\$ 1,575.00	2	
0203B Link Corridor	I5 / I7 - Floor Sheeting		Good	Moderate	High	900	SF	\$ 6.00	\$ 5,400.00	\$ 7.00	\$ 6,300.00	\$ 11,700.00	3	
0204 Corridor	I3 - Floor Sheeting		Good	Moderate	High	135	SF	\$ 6.00	\$ 810.00	\$ 7.00	\$ 945.00	\$ 1,755.00	3	
0205 Washroom	I3 - Floor Sheeting		Good	Moderate	High	30	SF	\$ 6.00	\$ 180.00	\$ 7.00	\$ 210.00	\$ 390.00	3	
0206 I.T. Storage	I3 - Floor Sheeting		Good	Moderate	High	40	SF	\$ 6.00	\$ 240.00	\$ 7.00	\$ 280.00	\$ 520.00	3	
0206 I.T. Storage	B1 - Pipe Insulation	AT	Good	Moderate	High	10	LF	\$ 30.00	\$ 300.00	\$ 15.00	\$ 150.00	\$ 450.00	2	
0207 I.T. Workshop / Storage	I3 - Floor Sheeting		Good	Moderate	High	205	SF	\$ 6.00	\$ 1,230.00	\$ 7.00	\$ 1,435.00	\$ 2,665.00	3	
0207 I.T. Workshop / Storage	B1 - Pipe Insulation	AT	Good	Moderate	High	25	LF	\$ 30.00	\$ 750.00	\$ 15.00	\$ 375.00	\$ 1,125.00	2	
0208 IS Office	H5 - Floor Tile		Good	Moderate	High	190	SF	\$ 3.00	\$ 570.00	\$ 7.00	\$ 1,330.00	\$ 1,900.00	3	
0208 IS Office	B1 - Pipe Insulation	AT	Good	Moderate	High	25	LF	\$ 30.00	\$ 750.00	\$ 15.00	\$ 375.00	\$ 1,125.00	2	
0210 Office	B1 - Pipe Insulation	AT	Good	Moderate	High	20	LF	\$ 30.00	\$ 600.00	\$ 15.00	\$ 300.00	\$ 900.00	2	
0211 Corridor	B1 - Pipe Insulation	AT	Fair	Moderate	High	25	LF	\$ 30.00	\$ 750.00	\$ 15.00	\$ 375.00	\$ 1,125.00	1	
0213 Office	B1 - Pipe Insulation	AT	Good	Moderate	High	25	LF	\$ 30.00	\$ 750.00	\$ 15.00	\$ 375.00	\$ 1,125.00	2	
0214 Clerical	B1 - Pipe Insulation	AT	Good	Moderate	High	15	LF	\$ 30.00	\$ 450.00	\$ 15.00	\$ 225.00	\$ 675.00	2	
0215 Health Records	B1 - Pipe Insulation	AT	Good	Moderate	High	80	LF	\$ 30.00	\$ 2,400.00	\$ 15.00	\$ 1,200.00	\$ 3,600.00	2	
0217 I.T. Storage	H1 - Floor Tile		Good	Moderate	High	160	SF	\$ 3.00	\$ 480.00	\$ 7.00	\$ 1,120.00	\$ 1,600.00	3	
0218 I.T. Office	I3 - Floor Sheeting		Good	Moderate	High	475	SF	\$ 6.00	\$ 2,850.00	\$ 7.00	\$ 3,325.00	\$ 6,175.00	3	
0220 Mechanical Room 1	A6 - Ceiling Texture		Fair	Moderate	High	230	SF	\$ 50.00	\$ 11,500.00	\$ 4.00	\$ 920.00	\$ 12,420.00	3	VI
0220 Mechanical Room 1	C3 - Insulating Cement		Poor	High	High	15	FTG	\$ 110.00	\$ 1,650.00	\$ 40.00	\$ 600.00	\$ 2,250.00	IMM	
0221 Telephone Room	H3 / H5 - Floor Tile		Good	Moderate	High	340	SF	\$ 3.00	\$ 1,020.00	\$ 7.00	\$ 2,380.00	\$ 3,400.00	3	
0226 File Room	H1 - Floor Tile		Good	Moderate	High	720	SF	\$ 3.00	\$ 2,160.00	\$ 7.00	\$ 5,040.00	\$ 7,200.00	3	
0226 File Room	B1 - Pipe Insulation		Good	High	High	7	LF	\$ 25.00	\$ 175.00	\$ 15.00	\$ 105.00	\$ 280.00	1	
0226 File Room	B1 - Pipe Insulation		Fair	High	High	75	LF	\$ 25.00	\$ 1,875.00	\$ 15.00	\$ 1,125.00	\$ 3,000.00	1	
0226 File Room	B1 - Pipe Insulation		Fair	High	High	100	LF	\$ 25.00	\$ 2,500.00	\$ 15.00	\$ 1,500.00	\$ 4,000.00	1	
0227 Office	B1 - Pipe Insulation	AT	Good	Moderate	High	35	LF	\$ 30.00	\$ 1,050.00	\$ 15.00	\$ 525.00	\$ 1,575.00	2	
0228 Cafeteria	A1 - Fireproofing Spray	WB	Fair	Moderate	High	200	SF	\$ 50.00	\$ 10,000.00	\$ 13.00	\$ 2,600.00	\$ 12,600.00	3	
0255 Storage Room	H1 - Floor Tile		Good	Moderate	High	260	SF	\$ 3.00	\$ 780.00	\$ 7.00	\$ 1,820.00	\$ 2,600.00	3	
0256 Pneumatic Tube Room	H1 - Floor Tile		Good	Moderate	High	190	SF	\$ 3.00	\$ 570.00	\$ 7.00	\$ 1,330.00	\$ 1,900.00	3	
0257 Corridor	H1 - Floor Tile		Good	Moderate	High	170	SF	\$ 3.00	\$ 510.00	\$ 7.00	\$ 1,190.00	\$ 1,700.00	3	

ASBESTOS CONTAINING MATERIAL LOCATIONS  
AND PRIORITIZED ABATEMENT COST ESTIMATES

FUNCTIONAL AREA (and description)	ID CODE DESCRIPTION AND APPLICATION	VIS	CONDITION	ACCESSIBILITY	FRIABILITY	QUANTITY	UNIT	ABATEMENT RATE	ABATEMENT COST	REAPPLICATION RATE	REAPPLICATION COST	COST PER APPLICATION	REMOVAL FOOT PRIORITY	FOOT NOTES
<b>PGRH SITE - PRINCE GEORGE REGIONAL BUILDING</b>														
<b>GROUND FLOOR Con't</b>														
0258 Corridor	H1 - Floor Tile		Good	Moderate	High	500	SF	\$ 3.00	\$ 1,500.00	\$ 7.00	\$ 3,500.00	\$ 5,000.00	3	
0258 Corridor	A1 - Fireproofing Spray	WB	Fair	Moderate	High	50	SF	\$ 50.00	\$ 2,500.00	\$ 13.00	\$ 650.00	\$ 3,150.00	3	///
0258A Store Room	H1 - Floor Tile		Good	Moderate	High	65	SF	\$ 3.00	\$ 195.00	\$ 7.00	\$ 455.00	\$ 650.00	3	
0258A Store Room	A1 - Fireproofing Debris	WW	Fair	Moderate	High	60	SF	\$ 35.00	\$ 2,100.00	\$ -	\$ -	\$ 2,100.00	3	///
0259 Corridor	H1 - Floor Tile		Good	Moderate	High	1050	SF	\$ 3.00	\$ 3,150.00	\$ 7.00	\$ 7,350.00	\$ 10,500.00	3	
0259 Corridor	A1 - Fireproofing Spray	WB	Fair	Moderate	High	50	SF	\$ 50.00	\$ 2,500.00	\$ 13.00	\$ 650.00	\$ 3,150.00	3	///
0259A Corridor	I3 - Floor Sheeting		Good	Moderate	High	215	SF	\$ 6.00	\$ 1,290.00	\$ 7.00	\$ 1,505.00	\$ 2,795.00	3	
0259A Corridor	B1 - Pipe Insulation	AT	Good	Moderate	High	35	LF	\$ 30.00	\$ 1,050.00	\$ 15.00	\$ 525.00	\$ 1,575.00	2	
0260 Corridor	H1 - Floor Tile		Good	Moderate	High	615	SF	\$ 3.00	\$ 1,845.00	\$ 7.00	\$ 4,305.00	\$ 6,150.00	3	
0265 Office	B1 - Pipe Insulation	AT	Good	Moderate	High	40	LF	\$ 30.00	\$ 1,200.00	\$ 15.00	\$ 600.00	\$ 1,800.00	2	
0266 Office	B1 - Pipe Insulation	AT	Good	Moderate	High	20	LF	\$ 30.00	\$ 600.00	\$ 15.00	\$ 300.00	\$ 900.00	2	
0267 Office	B1 - Pipe Insulation	AT	Good	Moderate	High	20	LF	\$ 30.00	\$ 600.00	\$ 15.00	\$ 300.00	\$ 900.00	2	
0268 Occupational Health Srv.	B1 - Pipe Insulation	AT	Good	Moderate	High	60	LF	\$ 30.00	\$ 1,800.00	\$ 15.00	\$ 900.00	\$ 2,700.00	2	
0269 Office	B1 - Pipe Insulation	AT	Good	Moderate	High	40	LF	\$ 30.00	\$ 1,200.00	\$ 15.00	\$ 600.00	\$ 1,800.00	2	
0270 Materials Waiting Area	B1 - Pipe Insulation	AT	Good	Moderate	High	40	LF	\$ 30.00	\$ 1,200.00	\$ 15.00	\$ 600.00	\$ 1,800.00	2	
0271 Exam / First Aid Room	H1 - Floor Tile		Good	Moderate	High	180	SF	\$ 3.00	\$ 540.00	\$ 7.00	\$ 1,260.00	\$ 1,800.00	3	
0271 Exam / First Aid Room	B1 - Pipe Insulation	AT	Good	Moderate	High	30	LF	\$ 30.00	\$ 900.00	\$ 15.00	\$ 450.00	\$ 1,350.00	2	
0272 Exam Washroom	H1 - Floor Tile		Good	Moderate	High	35	SF	\$ 3.00	\$ 105.00	\$ 7.00	\$ 245.00	\$ 350.00	3	
0272 Exam Washroom	B1 - Pipe Insulation	AT	Good	Moderate	High	10	LF	\$ 30.00	\$ 300.00	\$ 15.00	\$ 150.00	\$ 450.00	2	
0273 Washroom	H1 - Floor Tile		Good	Moderate	High	45	SF	\$ 3.00	\$ 135.00	\$ 7.00	\$ 315.00	\$ 450.00	3	
0274 Dietician Office	I4 - Floor Sheeting		Good	Moderate	High	245	SF	\$ 6.00	\$ 1,470.00	\$ 7.00	\$ 1,715.00	\$ 3,185.00	3	
0274 Dietician Office	B1 - Pipe Insulation	AT	Good	Moderate	High	30	LF	\$ 30.00	\$ 900.00	\$ 15.00	\$ 450.00	\$ 1,350.00	2	
0275 Corridor	I3 - Floor Sheeting		Good	Moderate	High	290	SF	\$ 6.00	\$ 1,740.00	\$ 7.00	\$ 2,030.00	\$ 3,770.00	3	
0275 Corridor	B1 - Pipe Insulation	AT	Fair	Moderate	High	20	LF	\$ 30.00	\$ 600.00	\$ 15.00	\$ 300.00	\$ 900.00	1	
0276 Elevator Lobby	C1 - Insulating Cement	AT	Good	Moderate	High	15	FTG	\$ 125.00	\$ 1,875.00	\$ 35.00	\$ 525.00	\$ 2,400.00	2	
0277 Corridor	B1 - Pipe Insulation	AT	Poor	High	High	30	LF	\$ 30.00	\$ 900.00	\$ 15.00	\$ 450.00	\$ 1,350.00	IMM	
ST01 Stairwell Lower Landing	H1 - Floor Tile		Good	Moderate	High	70	SF	\$ 3.00	\$ 210.00	\$ 7.00	\$ 490.00	\$ 700.00	3	
ST01 Stairwell Landings	H1 - Floor Tile		Poor	Moderate	High	130	SF	\$ 3.00	\$ 390.00	\$ 7.00	\$ 910.00	\$ 1,300.00	IMM	
ST02 Lower & Mid Stair Landing	H1 - Floor Tile		Good	Moderate	High	210	SF	\$ 3.00	\$ 630.00	\$ 7.00	\$ 1,470.00	\$ 2,100.00	3	
ST05 Stairwell	I3 - Floor Sheeting		Good	Moderate	High	75	SF	\$ 6.00	\$ 450.00	\$ 7.00	\$ 525.00	\$ 975.00	3	
ST05 Stairwell	B1 - Pipe Insulation	W W		Low	High	30	LF	\$ 35.00	\$ 1,050.00	\$ 15.00	\$ 450.00	\$ 1,500.00	3	///
ST05A Under Stair Storage	B1 - Pipe Insulation	L	Fair	High	High	60	LF	\$ 25.00	\$ 1,500.00	\$ 15.00	\$ 900.00	\$ 2,400.00	IMM	
ST06 Under Stair Storage	C1 - Insulating Cement		Poor	High	High	2	FTG	\$ 110.00	\$ 220.00	\$ 35.00	\$ 70.00	\$ 290.00	IMM	
ST07 Stairwell	B1 - Pipe Insulation	W W		Low	High	30	LF	\$ 25.00	\$ 750.00	\$ 15.00	\$ 450.00	\$ 1,200.00	3	///
ST07 Stairwell Basement Level	B1 - Pipe Insulation	L	Poor	High	High	75	LF	\$ 25.00	\$ 1,875.00	\$ 15.00	\$ 1,125.00	\$ 3,000.00	IMM	
Throughout 1967-1976 Renovation Areas	P1 - Drywall Filler		Good	High	Moderate		SF	\$ 2.50	\$ -	\$ -	\$ -	\$ -	3	VII

ASBESTOS CONTAINING MATERIAL LOCATIONS  
AND PRIORITIZED ABATEMENT COST ESTIMATES

FUNCTIONAL AREA and description)	ID CODE DESCRIPTION AND APPLICATION	VIS	CONDITION	ACCESSIBILITY	FRIABILITY	QUANTITY	UNIT	ABATEMENT RATE	COST	REAPPLICATION RATE	COST	COST PER APPLICATION	REMOVAL FOOT PRIORITY NOTES
<b>PGRH SITE - PRINCE GEORGE REGIONAL BUILDING</b>													
<b>MAIN FLOOR</b>													
1021 Female OR Staff Corridor	I3 - Floor Sheeting		Good	Moderate	High	60	SF	\$ 6.00	\$ 360.00	\$ 7.00	\$ 420.00	\$ 780.00	3
1036 OR Entry Transfer Area	I3 - Floor Sheeting		Good	Moderate	High	180	SF	\$ 6.00	\$ 1,080.00	\$ 7.00	\$ 1,260.00	\$ 2,340.00	3
1039 Female OR Staff Change	I3 - Floor Sheeting		Good	Moderate	High	510	SF	\$ 6.00	\$ 3,060.00	\$ 7.00	\$ 3,570.00	\$ 6,630.00	3
1040 Male OR Staff Change Rrn	I3 - Floor Sheeting		Good	Moderate	High	245	SF	\$ 6.00	\$ 1,470.00	\$ 7.00	\$ 1,715.00	\$ 3,185.00	3
1041 Male OR Staff Lounge	I3 - Floor Sheeting	SUL	Good	Low	High	840	SF	\$ 6.00	\$ 5,040.00	\$ 7.00	\$ 5,880.00	\$ 10,920.00	3
1043 Male OR Staff Washroom	I3 - Floor Sheeting		Poor	High	High	45	SF	\$ 6.00	\$ 270.00	\$ 7.00	\$ 315.00	\$ 585.00	IMM
1044 Washroom	I3 - Floor Sheeting		Good	Moderate	High	80	SF	\$ 6.00	\$ 480.00	\$ 7.00	\$ 560.00	\$ 1,040.00	3
1045 Office	I3 - Floor Sheeting		Good	Moderate	High	125	SF	\$ 6.00	\$ 750.00	\$ 7.00	\$ 875.00	\$ 1,625.00	3
1047 OR Corridor	I3 - Floor Sheeting		Good	Moderate	High	250	SF	\$ 6.00	\$ 1,500.00	\$ 7.00	\$ 1,750.00	\$ 3,250.00	3
1048 OR Corridor	I3 - Floor Sheeting		Good	Moderate	High	705	SF	\$ 6.00	\$ 4,230.00	\$ 7.00	\$ 4,935.00	\$ 9,165.00	3
1049 Corridor	I3 - Floor Sheeting		Good	Moderate	High	90	SF	\$ 6.00	\$ 540.00	\$ 7.00	\$ 630.00	\$ 1,170.00	3
1050 Soiled Utility Room	I3 - Floor Sheeting		Good	Moderate	High	205	SF	\$ 6.00	\$ 1,230.00	\$ 7.00	\$ 1,435.00	\$ 2,665.00	3
1051 Office	I3 - Floor Sheeting		Good	Moderate	High	155	SF	\$ 6.00	\$ 930.00	\$ 7.00	\$ 1,085.00	\$ 2,015.00	3
1052A Store Room	I3 - Floor Sheeting		Good	Moderate	High	55	SF	\$ 6.00	\$ 330.00	\$ 7.00	\$ 385.00	\$ 715.00	3
1053 Corridor	I3 - Floor Sheeting		Good	Moderate	High	290	SF	\$ 6.00	\$ 1,740.00	\$ 7.00	\$ 2,030.00	\$ 3,770.00	3
1054 Washroom	I3 - Floor Sheeting		Good	Moderate	High	30	SF	\$ 6.00	\$ 180.00	\$ 7.00	\$ 210.00	\$ 390.00	3
1055 Corridor	I3 - Floor Sheeting		Good	Moderate	High	900	SF	\$ 6.00	\$ 5,400.00	\$ 7.00	\$ 6,300.00	\$ 11,700.00	3
1056 Corridor	I3 - Floor Sheeting		Good	Moderate	High	35	SF	\$ 6.00	\$ 210.00	\$ 7.00	\$ 245.00	\$ 455.00	3
1058 OR 2	I3 - Floor Sheeting		Good	Moderate	High	340	SF	\$ 6.00	\$ 2,040.00	\$ 7.00	\$ 2,380.00	\$ 4,420.00	3
1059 Equipment Storage	I3 - Floor Sheeting		Good	Moderate	High	120	SF	\$ 6.00	\$ 720.00	\$ 7.00	\$ 840.00	\$ 1,560.00	3
1061 OR 4	I3 - Floor Sheeting		Good	Moderate	High	340	SF	\$ 6.00	\$ 2,040.00	\$ 7.00	\$ 2,380.00	\$ 4,420.00	3
1063 OR Theatre Corridor	I3 - Floor Sheeting		Good	Moderate	High	1230	SF	\$ 6.00	\$ 7,380.00	\$ 7.00	\$ 8,610.00	\$ 15,990.00	3
1064 Process	I3 - Floor Sheeting		Good	Moderate	High	120	SF	\$ 6.00	\$ 720.00	\$ 7.00	\$ 840.00	\$ 1,560.00	3
1065 Corridor	I3 - Floor Sheeting		Good	Moderate	High	450	SF	\$ 6.00	\$ 2,700.00	\$ 7.00	\$ 3,150.00	\$ 5,850.00	3
1066 OR 10	I3 - Floor Sheeting		Good	Moderate	High	340	SF	\$ 6.00	\$ 2,040.00	\$ 7.00	\$ 2,380.00	\$ 4,420.00	3
1069 Equipment Storage	I3 - Floor Sheeting		Good	Moderate	High	120	SF	\$ 6.00	\$ 720.00	\$ 7.00	\$ 840.00	\$ 1,560.00	3
1070 OR 7	I3 - Floor Sheeting		Good	Moderate	High	340	SF	\$ 6.00	\$ 2,040.00	\$ 7.00	\$ 2,380.00	\$ 4,420.00	3
1072 Custodial Room	I3 - Floor Sheeting		Good	Moderate	High	90	SF	\$ 6.00	\$ 540.00	\$ 7.00	\$ 630.00	\$ 1,170.00	3
1073 Corridor	I3 - Floor Sheeting		Good	Moderate	High	1000	SF	\$ 5.00	\$ 5,000.00	\$ 7.00	\$ 7,000.00	\$ 12,000.00	3
1074 P.A.R.	I3 - Floor Sheeting		Good	Moderate	High	2560	SF	\$ 5.00	\$ 12,800.00	\$ 7.00	\$ 17,920.00	\$ 30,720.00	3
1075 Nurses Station	I3 - Floor Sheeting		Good	Moderate	High	100	SF	\$ 6.00	\$ 600.00	\$ 7.00	\$ 700.00	\$ 1,300.00	3
1077 Isolation Ward	I3 - Floor Sheeting		Good	Moderate	High	120	SF	\$ 6.00	\$ 720.00	\$ 7.00	\$ 840.00	\$ 1,560.00	3
1078 Female Change Room	I3 - Floor Sheeting		Good	Moderate	High	180	SF	\$ 6.00	\$ 1,080.00	\$ 7.00	\$ 1,260.00	\$ 2,340.00	3
1079A Nurses Station	I3 - Floor Sheeting		Poor	High	High	65	SF	\$ 6.00	\$ 390.00	\$ 7.00	\$ 455.00	\$ 845.00	IMM
1080 Waiting Area	I3 - Floor Sheeting		Good	Moderate	High	680	SF	\$ 6.00	\$ 4,080.00	\$ 7.00	\$ 4,760.00	\$ 8,840.00	3
1081 Corridor	I3 - Floor Sheeting		Good	Moderate	High	65	SF	\$ 6.00	\$ 390.00	\$ 7.00	\$ 455.00	\$ 845.00	3
1082 Washroom	I3 - Floor Sheeting		Good	Moderate	High	60	SF	\$ 6.00	\$ 360.00	\$ 7.00	\$ 420.00	\$ 780.00	3

ASBESTOS CONTAINING MATERIAL LOCATIONS  
AND PRIORITIZED ABATEMENT COST ESTIMATES

04/10/2007

FUNCTIONAL AREA (and description)	ID CODE DESCRIPTION AND APPLICATION	VIS	CONDITION	ACCESSIBILITY	FRIABILITY	QUANTITY	UNIT	ABATEMENT RATE	ABATEMENT COST	REAPPLICATION RATE	REAPPLICATION COST	COST PER APPLICATION	REMOVAL PRIORITY	FOOT NOTES
<b>PGRH SITE - PRINCE GEORGE REGIONAL BUILDING</b>														
<b>MAIN FLOOR Con't</b>														
1083	Washroom		Good	Moderate	High	60	SF	\$ 6.00	\$ 360.00	\$ 7.00	\$ 420.00	\$ 780.00	3	
1085	Equipment Storage		Good	Moderate	High	75	SF	\$ 6.00	\$ 450.00	\$ 7.00	\$ 525.00	\$ 975.00	3	
1086	Office		Good	Moderate	High	105	SF	\$ 6.00	\$ 630.00	\$ 7.00	\$ 735.00	\$ 1,365.00	3	
1087	Office		Good	Moderate	High	140	SF	\$ 6.00	\$ 840.00	\$ 7.00	\$ 980.00	\$ 1,820.00	3	
1089	Office		Good	Moderate	High	220	SF	\$ 6.00	\$ 1,320.00	\$ 7.00	\$ 1,540.00	\$ 2,860.00	3	
1091	Head Nurses Office	SUC	Good	Moderate	High	70	SF	\$ 6.00	\$ 420.00	\$ 7.00	\$ 490.00	\$ 910.00	3	
1092	Bookings Office		Good	Moderate	High	130	SF	\$ 6.00	\$ 780.00	\$ 7.00	\$ 910.00	\$ 1,690.00	3	
1093	A.C.C. Office		Good	Moderate	High	100	SF	\$ 6.00	\$ 600.00	\$ 7.00	\$ 700.00	\$ 1,300.00	3	
1094	Corridor		Good	Moderate	High	1670	SF	\$ 5.00	\$ 8,350.00	\$ 7.00	\$ 11,690.00	\$ 20,040.00	3	
1095	Mammogram		Good	Moderate	High	135	SF	\$ 6.00	\$ 810.00	\$ 7.00	\$ 945.00	\$ 1,755.00	3	
1096	Mammo Change Room		Good	Moderate	High	15	SF	\$ 6.00	\$ 90.00	\$ 7.00	\$ 105.00	\$ 195.00	3	
1097	Mammo Control Room		Good	Moderate	High	60	SF	\$ 6.00	\$ 360.00	\$ 7.00	\$ 420.00	\$ 780.00	3	
1098	Soiled Utility Room		Good	Moderate	High	50	SF	\$ 6.00	\$ 300.00	\$ 7.00	\$ 350.00	\$ 650.00	3	
1102	Head Scanner		Good	Moderate	High	540	SF	\$ 6.00	\$ 3,240.00	\$ 7.00	\$ 3,780.00	\$ 7,020.00	3	
1106	Radiology D.R.		Good	Moderate	High	60	SF	\$ 6.00	\$ 360.00	\$ 7.00	\$ 420.00	\$ 780.00	3	
1107	Radiology Sorting		Good	Moderate	High	90	SF	\$ 6.00	\$ 540.00	\$ 7.00	\$ 630.00	\$ 1,170.00	3	
1109	Lounge	S	Good	Moderate	High	135	SF	\$ 6.00	\$ 810.00	\$ 7.00	\$ 945.00	\$ 1,755.00	3	
1110	Corridor		Good	Moderate	High	205	SF	\$ 6.00	\$ 1,230.00	\$ 7.00	\$ 1,435.00	\$ 2,665.00	3	
1112	Director		Good	Moderate	High	175	SF	\$ 6.00	\$ 1,050.00	\$ 7.00	\$ 1,225.00	\$ 2,275.00	3	
1115	Corridor		Good	Moderate	High	90	SF	\$ 6.00	\$ 540.00	\$ 7.00	\$ 630.00	\$ 1,170.00	3	
1116	Radiology		Good	Moderate	High	170	SF	\$ 6.00	\$ 1,020.00	\$ 7.00	\$ 1,190.00	\$ 2,210.00	3	
1118	Office		Good	Moderate	High	95	SF	\$ 6.00	\$ 570.00	\$ 7.00	\$ 665.00	\$ 1,235.00	3	
1119	Office		Good	Moderate	High	65	SF	\$ 6.00	\$ 390.00	\$ 7.00	\$ 455.00	\$ 845.00	3	
1120	Control		Good	Moderate	High	30	SF	\$ 6.00	\$ 180.00	\$ 7.00	\$ 210.00	\$ 390.00	3	
1121	Corridor		Good	Moderate	High	125	SF	\$ 6.00	\$ 750.00	\$ 7.00	\$ 875.00	\$ 1,625.00	3	
1122	Document Viewing		Good	Moderate	High	120	SF	\$ 6.00	\$ 720.00	\$ 7.00	\$ 840.00	\$ 1,560.00	3	
1123	Control		Good	Moderate	High	55	SF	\$ 6.00	\$ 330.00	\$ 7.00	\$ 385.00	\$ 715.00	3	
1126	Trauma		Good	Moderate	High	290	SF	\$ 6.00	\$ 1,740.00	\$ 7.00	\$ 2,030.00	\$ 3,770.00	3	
1129	Washroom		Good	Moderate	High	25	SF	\$ 6.00	\$ 150.00	\$ 7.00	\$ 175.00	\$ 325.00	3	
1131	Change Room		Good	Moderate	High	130	SF	\$ 6.00	\$ 780.00	\$ 7.00	\$ 910.00	\$ 1,690.00	3	
1132	Waiting Area		Good	Moderate	High	420	SF	\$ 6.00	\$ 2,520.00	\$ 7.00	\$ 2,940.00	\$ 5,460.00	3	
1133	Printer Room		Good	Moderate	High	40	SF	\$ 6.00	\$ 240.00	\$ 7.00	\$ 280.00	\$ 520.00	3	
1136	File Room		Good	Moderate	High	40	SF	\$ 6.00	\$ 240.00	\$ 7.00	\$ 280.00	\$ 520.00	3	
1137	File Room		Good	Moderate	High	50	SF	\$ 6.00	\$ 300.00	\$ 7.00	\$ 350.00	\$ 650.00	3	
1138	Waiting Area		Good	Moderate	High	50	SF	\$ 6.00	\$ 300.00	\$ 7.00	\$ 350.00	\$ 650.00	3	
1140	Clean Utility Room		Good	Moderate	High	60	SF	\$ 6.00	\$ 360.00	\$ 7.00	\$ 420.00	\$ 780.00	3	
1141	Office		Good	Moderate	High	135	SF	\$ 6.00	\$ 810.00	\$ 7.00	\$ 945.00	\$ 1,755.00	3	

ASBESTOS CONTAINING MATERIAL LOCATIONS  
AND PRIORITIZED ABATEMENT COST ESTIMATES

FUNCTIONAL AREA (and description)	ID CODE DESCRIPTION AND APPLICATION	VIS	CONDITION	ACCESSIBILITY	FRIABILITY	QUANTITY	UNIT	ABATEMENT RATE	ABATEMENT COST	REAPPLICATION RATE	REAPPLICATION COST	COST PER APPLICATION	REMOVAL FOOT PRIORITY	FOOT NOTES
<b>PGRH SITE - PRINCE GEORGE REGIONAL BUILDING</b>														
<b>MAIN FLOOR Con't</b>														
1141A Booking	13 - Floor Sheeting		Good	Moderate	High	180	SF	\$ 6.00	\$ 1,080.00	\$ 7.00	\$ 1,260.00	\$ 2,340.00	3	
1144 A.C.C. Office	13 - Floor Sheeting		Good	Moderate	High	290	SF	\$ 6.00	\$ 1,740.00	\$ 7.00	\$ 2,030.00	\$ 3,770.00	3	
1145 Corridor	13 - Floor Sheeting		Good	Moderate	High	660	SF	\$ 6.00	\$ 3,960.00	\$ 7.00	\$ 4,620.00	\$ 8,580.00	3	
1202 Stretcher Holding Area	14 - Floor Sheeting		Good	Moderate	High	30	SF	\$ 6.00	\$ 180.00	\$ 7.00	\$ 210.00	\$ 390.00	3	
1204 Scanner	15 - Floor Sheeting		Good	Moderate	High	145	SF	\$ 6.00	\$ 870.00	\$ 7.00	\$ 1,015.00	\$ 1,885.00	3	
1205 Control Room	15 - Floor Sheeting		Good	Moderate	High	85	SF	\$ 6.00	\$ 510.00	\$ 7.00	\$ 595.00	\$ 1,105.00	3	
1206 Dark Room	14 - Floor Sheeting		Good	Moderate	High	70	SF	\$ 6.00	\$ 420.00	\$ 7.00	\$ 490.00	\$ 910.00	3	
1207 Washroom	14 - Floor Sheeting		Good	Moderate	High	35	SF	\$ 6.00	\$ 210.00	\$ 7.00	\$ 245.00	\$ 455.00	3	
1208 Washroom	14 - Floor Sheeting		Good	Moderate	High	25	SF	\$ 6.00	\$ 150.00	\$ 7.00	\$ 175.00	\$ 325.00	3	
1209 Corridor	14 - Floor Sheeting		Good	Moderate	High	240	SF	\$ 6.00	\$ 1,440.00	\$ 7.00	\$ 1,680.00	\$ 3,120.00	3	
1210 Medium Level Lab	16 - Floor Sheeting		Good	Moderate	High	190	SF	\$ 6.00	\$ 1,140.00	\$ 7.00	\$ 1,330.00	\$ 2,470.00	3	
1211 Injection	16 - Floor Sheeting		Good	Moderate	High	100	SF	\$ 6.00	\$ 600.00	\$ 7.00	\$ 700.00	\$ 1,300.00	3	
1213 Clean Holding Area	14 - Floor Sheeting		Good	Moderate	High	40	SF	\$ 6.00	\$ 240.00	\$ 7.00	\$ 280.00	\$ 520.00	3	
1214 Soiled Utility Room	14 - Floor Sheeting		Good	Moderate	High	40	SF	\$ 6.00	\$ 240.00	\$ 7.00	\$ 280.00	\$ 520.00	3	
1215 Custodial Room	14 - Floor Sheeting		Good	Moderate	High	60	SF	\$ 6.00	\$ 360.00	\$ 7.00	\$ 420.00	\$ 780.00	3	
1216 Corridor	14 - Floor Sheeting		Good	Moderate	High	250	SF	\$ 6.00	\$ 1,500.00	\$ 7.00	\$ 1,750.00	\$ 3,250.00	3	
1216A Office	14 - Floor Sheeting		Good	Moderate	High	60	SF	\$ 6.00	\$ 360.00	\$ 7.00	\$ 420.00	\$ 780.00	3	
1217 Washroom	14 - Floor Sheeting		Good	Moderate	High	25	SF	\$ 6.00	\$ 150.00	\$ 7.00	\$ 175.00	\$ 325.00	3	
1219 C. Tech Room	14 - Floor Sheeting	SUC	Good	Low	High	225	SF	\$ 6.00	\$ 1,350.00	\$ 7.00	\$ 1,575.00	\$ 2,925.00	3	
1221 Ultra Sound	14 - Floor Sheeting		Good	Moderate	High	180	SF	\$ 6.00	\$ 1,080.00	\$ 7.00	\$ 1,260.00	\$ 2,340.00	3	
1222 Ultra Sound	14 - Floor Sheeting		Good	Moderate	High	245	SF	\$ 6.00	\$ 1,470.00	\$ 7.00	\$ 1,715.00	\$ 3,185.00	3	
1223 Mail Room	13 - Floor Sheeting	S	Good	Moderate	High	75	SF	\$ 6.00	\$ 450.00	\$ 7.00	\$ 525.00	\$ 975.00	3	
1224 A.C.C.	14 - Floor Sheeting		Good	Moderate	High	165	SF	\$ 6.00	\$ 990.00	\$ 7.00	\$ 1,155.00	\$ 2,145.00	3	
1226 Corridor	14 - Floor Sheeting		Good	Moderate	High	70	SF	\$ 6.00	\$ 420.00	\$ 7.00	\$ 490.00	\$ 910.00	3	
1354 Corridor	13 - Floor Sheeting		Good	Moderate	High	375	SF	\$ 6.00	\$ 2,250.00	\$ 7.00	\$ 2,625.00	\$ 4,875.00	3	
1357 Pastoral Care Room	13 - Floor Sheeting	SUC	Good	Low	High	360	SF	\$ 6.00	\$ 2,160.00	\$ 7.00	\$ 2,520.00	\$ 4,680.00	3	
1358 Patient Washroom	14 - Floor Sheeting		Good	Moderate	High	60	SF	\$ 6.00	\$ 360.00	\$ 7.00	\$ 420.00	\$ 780.00	3	
ST01 Stairwell Landings	H2 - Floor Tile		Good	Moderate	High	180	SF	\$ 6.00	\$ 1,080.00	\$ 7.00	\$ 1,260.00	\$ 2,340.00	3	
ST02 Stairwell Landings	H2 - Floor Tile		Good	Moderate	High	200	SF	\$ 6.00	\$ 1,200.00	\$ 7.00	\$ 1,400.00	\$ 2,600.00	3	
ST05 Stairwell Landings	14 - Floor Sheeting		Good	Moderate	High	100	SF	\$ 6.00	\$ 600.00	\$ 7.00	\$ 700.00	\$ 1,300.00	3	
ST05 Stairwell	B1 - Pipe Insulation	W W		Low	High	30	LF	\$ 35.00	\$ 1,050.00	\$ 15.00	\$ 450.00	\$ 1,500.00	3	///
ST07 Stairwell	B1 - Pipe Insulation	W W		Low	High	30	LF	\$ 25.00	\$ 750.00	\$ 15.00	\$ 450.00	\$ 1,200.00	3	///
Throughout 1950's Sector	B1 - Pipe Insulation	W W		Low	High	1000	LF	\$ 35.00	\$ 35,000.00	\$ -	\$ -	\$ 35,000.00	3	///

ASBESTOS CONTAINING MATERIAL LOCATIONS  
AND PRIORITIZED ABATEMENT COST ESTIMATES

FUNCTIONAL AREA (and description)	ID CODE DESCRIPTION AND APPLICATION	VIS	CONDITION	ACCESSIBILITY	FRIABILITY	QUANTITY	UNIT	ABATEMENT RATE	ABATEMENT COST	REAPPLICATION RATE	REAPPLICATION COST	COST PER APPLICATION	REMOVAL PRIORITY	FOOT NOTES
<b>PGRH SITE - PRINCE GEORGE REGIONAL BUILDING</b>														
<b>SECOND FLOOR</b>														
2065 Com / Electrical Room	H2 - Floor Tile		Good	Moderate	High	90	SF	\$ 3.00	\$ 270.00	\$ 7.00	\$ 630.00	\$ 900.00	3	
2078 Corridor	I3 - Floor Sheeting		Good	Moderate	High	275	SF	\$ 6.00	\$ 1,650.00	\$ 7.00	\$ 1,925.00	\$ 3,575.00	3	
2078A Care Room	I3 - Floor Sheeting		Good	Moderate	High	100	SF	\$ 6.00	\$ 600.00	\$ 7.00	\$ 700.00	\$ 1,300.00	3	
2090 Corridor	I3 - Floor Sheeting		Good	Moderate	High	260	SF	\$ 6.00	\$ 1,560.00	\$ 7.00	\$ 1,820.00	\$ 3,380.00	3	
2091 Store Room	I3 - Floor Sheeting		Good	Moderate	High	250	SF	\$ 6.00	\$ 1,500.00	\$ 7.00	\$ 1,750.00	\$ 3,250.00	3	
2093 Corridor	I3 - Floor Sheeting		Good	Moderate	High	200	SF	\$ 6.00	\$ 1,200.00	\$ 7.00	\$ 1,400.00	\$ 2,600.00	3	
2094 1 - Bed Ward	I3 - Floor Sheeting		Good	Moderate	High	140	SF	\$ 6.00	\$ 840.00	\$ 7.00	\$ 980.00	\$ 1,820.00	3	
2097 Staff Room	I3 - Floor Sheeting		Good	Moderate	High	160	SF	\$ 6.00	\$ 960.00	\$ 7.00	\$ 1,120.00	\$ 2,080.00	3	
2132 Shower Room	I3 - Floor Sheeting		Good	Moderate	High	25	SF	\$ 6.00	\$ 150.00	\$ 7.00	\$ 175.00	\$ 325.00	3	
2140 Shower Room	I3 - Floor Sheeting		Good	Moderate	High	20	SF	\$ 6.00	\$ 120.00	\$ 7.00	\$ 140.00	\$ 260.00	3	
2141 Shower Room	I3 - Floor Sheeting		Good	Moderate	High	20	SF	\$ 6.00	\$ 120.00	\$ 7.00	\$ 140.00	\$ 260.00	3	
ST01 Stairwell Landings	H2 - Floor Tile		Good	Moderate	High	180	SF	\$ 6.00	\$ 1,080.00	\$ 7.00	\$ 1,260.00	\$ 2,340.00	3	
ST02 Stairwell Landings	H2 - Floor Tile		Good	Moderate	High	200	SF	\$ 6.00	\$ 1,200.00	\$ 7.00	\$ 1,400.00	\$ 2,600.00	3	
ST14 Stairwell Landings	H2 - Floor Tile		Good	Moderate	High	30	SF	\$ 6.00	\$ 180.00	\$ -	\$ -	\$ 180.00	3	
Throughout West Wing and Inter-Link Wing	A1 - Fireproofing Spray	WW	Fair	Moderate	High		SF	\$ 50.00	\$ -	\$ 13.00	\$ -	\$ -	3	///
Throughout 1950's Sector	B1 - Pipe Insulation	W W		Low	High	1000	LF	\$ 35.00	\$ 35,000.00	\$ -	\$ -	\$ 35,000.00	3	///
<b>THIRD FLOOR</b>														
Throughout West Wing and Inter-Link Wing	A1 - Fireproofing Spray	WW	Fair	Moderate	High		SF	\$ 50.00	\$ -	\$ 13.00	\$ -	\$ -	3	///
ST01 Stairwell Landings	H2 - Floor Tile		Good	Moderate	High	180	SF	\$ 6.00	\$ 1,080.00	\$ 7.00	\$ 1,260.00	\$ 2,340.00	3	
ST02 Stairwell Landings	H2 - Floor Tile		Good	Moderate	High	200	SF	\$ 6.00	\$ 1,200.00	\$ 7.00	\$ 1,400.00	\$ 2,600.00	3	
ST14 Stairwell Landings	H2 - Floor Tile		Good	Moderate	High	150	SF	\$ 6.00	\$ 900.00	\$ -	\$ -	\$ 900.00	3	
Throughout 1950's Sector	B1 - Pipe Insulation	W W		Low	High	1000	LF	\$ 35.00	\$ 35,000.00	\$ -	\$ -	\$ 35,000.00	3	///
<b>FOURTH FLOOR</b>														
East Wing Walls	A1 - Fireproofing Spray	WW	Fair	Moderate	High	4500	SF	\$ 10.00	\$ 45,000.00	\$ -	\$ -	\$ 45,000.00	3	///
<b>ROOF TOP PENTHOUSE MECHANICAL SPACES - ACCESS FROM 4TH FLOOR</b>														
4074 Mechanical Room	A1 - Fireproofing Debris		Poor	High	High	170	SF	\$ 8.00	\$ 1,360.00	\$ -	\$ -	\$ 1,360.00	IMM	
4074 Mechanical Room	A1 - Fireproofing Spray		Fair	Moderate	High	170	SF	\$ 35.00	\$ 5,950.00	\$ 13.00	\$ 2,210.00	\$ 8,160.00	1	
4074 Mechanical Room Walls	A1 - Fireproofing Spray	WW	Fair	Moderate	High	700	SF	\$ 14.00	\$ 9,800.00	\$ -	\$ -	\$ 9,800.00	3	///
MR17 Mechanical Room 17	K1 - Duct Joint		Good	High	Low	2	Joint	\$ 210.00	\$ 420.00	\$ 150.00	\$ 300.00	\$ 720.00	2	
MR17 Mechanical Room Walls	A1 - Fireproofing Spray	WW	Fair	Moderate	High	800	SF	\$ 14.00	\$ 11,200.00	\$ -	\$ -	\$ 11,200.00	3	///
MR17 Mechanical Room	A1 - Fireproofing Spray		Good	Moderate	High	550	SF	\$ 35.00	\$ 19,250.00	\$ 13.00	\$ 7,150.00	\$ 26,400.00	2	
MR18 Mechanical Room 18	K1 - Duct Joint		Good	High	Low	2	Joint	\$ 210.00	\$ 420.00	\$ 150.00	\$ 300.00	\$ 720.00	2	
MR18 Mechanical Room Walls	A1 - Fireproofing Spray	WW	Fair	Moderate	High	800	SF	\$ 14.00	\$ 11,200.00	\$ -	\$ -	\$ 11,200.00	3	///
MR18 Mechanical Room	A1 - Fireproofing Spray		Fair	Moderate	High	550	SF	\$ 35.00	\$ 19,250.00	\$ 13.00	\$ 7,150.00	\$ 26,400.00	2	
MR19 Mechanical Room Walls	A1 - Fireproofing Spray	WW	Fair	Moderate	High	800	SF	\$ 14.00	\$ 11,200.00	\$ -	\$ -	\$ 11,200.00	3	///

ASBESTOS CONTAINING MATERIAL LOCATIONS  
AND PRIORITIZED ABATEMENT COST ESTIMATES

FUNCTIONAL AREA (and description)	ID CODE DESCRIPTION AND APPLICATION	VIS	CONDITION	ACCESSIBILITY	FRIABILITY	QUANTITY	UNIT	ABATEMENT RATE	ABATEMENT COST	REAPPLICATION RATE	REAPPLICATION COST	COST PER APPLICATION	REMOVAL PRIORITY	FOOT NOTES
<b>PGRH SITE - PRINCE GEORGE REGIONAL BUILDING</b>														
<b>ROOF TOP PENTHOUSE MECHANICAL SPACES - ACCESS FROM 4TH FLOOR Con't</b>														
MR19 Mechanical Room	A1 - Fireproofing Spray		Fair	Moderate	High	550	SF	\$ 35.00	\$ 19,250.00	\$ 13.00	\$ 7,150.00	\$ 26,400.00	2	
ST01 Stairwell Landings	H2 - Floor Tile		Good	Moderate	High	180	SF	\$ 6.00	\$ 1,080.00	\$ 7.00	\$ 1,260.00	\$ 2,340.00	3	
ST01 Stairwell Ceiling	A1 - Fireproofing Spray		Good	Moderate	High	180	SF	\$ 50.00	\$ 9,000.00	\$ 13.00	\$ 2,340.00	\$ 11,340.00	2	
ST01 Stairwell Walls	A1 - Fireproofing Debris	WW	Fair	Moderate	High	800	SF	\$ 14.00	\$ 11,200.00	\$ -	\$ -	\$ 11,200.00	3	///
ST02 Stairwell Ceiling	A1 - Fireproofing Spray		Good	Moderate	High	180	SF	\$ 50.00	\$ 9,000.00	\$ 13.00	\$ 2,340.00	\$ 11,340.00	2	
ST02 Stairwell Walls	A1 - Fireproofing Spray	WW	Fair	Moderate	High	800	SF	\$ 14.00	\$ 11,200.00	\$ -	\$ -	\$ 11,200.00	3	///
ST05 Stairwell	C1 - Insulating Cement		Good	High	High	6	FTG	\$ 110.00	\$ 660.00	\$ 40.00	\$ 240.00	\$ 900.00	2	
ST07 Stairwell	C1 - Insulating Cement		Good	High	High	1	FTG	\$ 110.00	\$ 110.00	\$ 40.00	\$ 40.00	\$ 150.00	2	
ST15 Stairwell Opening	A1 - Fireproofing Spray		Poor	High	High	25	SF	\$ 50.00	\$ 1,250.00	\$ 13.00	\$ 325.00	\$ 1,575.00	IMM	

<b>ROOF TOP PENTHOUSE MECHANICAL SPACES - ACCESS FROM 5TH FLOOR</b>														
5019 work Area	A1 - Fireproofing Spray	WW	Fair	Moderate	High	100	SF	\$ 35.00	\$ 3,500.00	\$ -	\$ -	\$ 3,500.00	3	///
5074 Mechanical Room	A1 - Fireproofing Spray		Fair	Moderate	High	170	SF	\$ 35.00	\$ 5,950.00	\$ 13.00	\$ 2,210.00	\$ 8,160.00	1	
5074 Mechanical Room Walls	A1 - Fireproofing Spray	WW	Fair	Moderate	High	700	SF	\$ 14.00	\$ 9,800.00	\$ -	\$ -	\$ 9,800.00	3	///
MR20 Mechanical Room 20	C1 - Insulating Cement		Poor	High	High	1	FTG	\$ 110.00	\$ 110.00	\$ 40.00	\$ 40.00	\$ 150.00	2	
MR20 Mechanical Room 20	C1 - Insulating Cement		Good	High	High	9	FTG	\$ 110.00	\$ 990.00	\$ 40.00	\$ 360.00	\$ 1,350.00	2	
Redundant Chillier Room	C1 - Insulating Cement		Poor	Low	High	30	FTG	\$ 110.00	\$ 3,300.00	\$ -	\$ -	\$ 3,300.00	IMM	

<b>IMMEDIATE ABATEMENT AND RE-APPLICATION COSTS</b>	<b>\$ 51,475.00</b>
<b>PRIORITY 1 RECOMMENDED ABATEMENT AND RE-APPLICATION COSTS</b>	<b>\$ 89,755.00</b>
<b>PRIORITY 2 RECOMMENDED ABATEMENT AND RE-APPLICATION COSTS</b>	<b>\$ 175,255.00</b>
<b>PRIORITY 3 RECOMMENDED ABATEMENT AND RE-APPLICATION COSTS</b>	<b>\$ 1,072,563.00</b>
<b>TOTAL ABATEMENT AND RE-APPLICATION COSTS FOR THIS FACILITY EXCLUDING DRYWALL FILLER, CEMENT ASBESTOS PIPING AND SEWER UNION PACKING MATERIALS COSTS</b>	<b>\$ 1,337,573.00</b>

- FOOT NOTES**
- I Amosite fireproofing debris was located on the floor in this area. Cleaning of the entire space (as noted on Drawing 743 ASB 4.1) is recommended
  - II Amosite fireproofing debris was located on old hangers and hollows in the concrete deck in this area. Cleaning of the entire space (as noted on Drawing 743 ASB 4.1) is only recommended where work activities will impact concrete deck and may results in the release of asbestos debris.
  - III Asbestos is located or assumed in this space as either asbestos fireproofing overspray or as asbestos pipe insulation. Opening of these spaces and removal of concealed asbestos materials is only recommended where renovation or maintenance activities requires access to these areas.
  - III Removal only prior to demolition or renovation activities which may impact this asbestos application is recommended.
  - IV *Asbestos fireproofing insulation in this are is noted to be in fair to poor condition with asbestos materials observed on the floor. Access to this area is restricted to persons equipped and trained in Moderate Risk Asbestos work procedures. Work in this space must be performed utilizing High Risk Asbestos work procedures as required to prevent exposure and asbestos material dissemination to other areas of the facility.*
  - V Asbestos pipe insulation is located within boxed columns in this area. Pipe quantity is included in the total length for this area.
  - VI Due to mechanical equipment in this room, removal of textured ceiling is next to impossible within equipment demolition. Removal of this asbestos application should be performed only prior to renovations or mechanical work in this room.
  - VII Finished drywall applications located in circa 1967 to 1977 renovation areas may contain asbestos drywall filler. Confirmatory sampling of drywall filler applications must be performed prior to any renovation or maintenance work which may impact drywall applications of this vintage.



ASBESTOS CONTAINING MATERIAL LOCATIONS  
AND PRIORITIZED ABATEMENT COST ESTIMATES

FUNCTIONAL AREA and description)	ID CODE DESCRIPTION AND APPLICATION	VIS	CONDITION	ACCESSIBILITY	FRIABILITY	QUANTITY	UNIT	RATE	ABATEMENT COST	REAPPLICATION RATE	REAPPLICATION COST	COST PER APPLICATION	REMOVAL PRIORITY	FOOT NOTES
-------------------------------------	--	-----	-----------	---------------	------------	----------	------	------	-------------------	-----------------------	-----------------------	-------------------------	------------------	---------------

**PGRH SITE - PRINCE GEORGE REGIONAL BUILDING**

**GENERAL NOTES:**

- 1 Abatement and re-application costs are based on individual applications. Prices will vary dependent upon timing and scope of work. It is recommended that revised budget numbers be prepared once an abatement scope of work is ascertained.
- 2 Functional area numbers are representative of the survey drawings provided with this report and may not indicate actual room numbers.
- 3 Only known and visible asbestos materials are listed. There is a distinct possibility that asbestos materials may be present in wall, ceiling and floor void spaces not identified in this report. Any suspect asbestos materials located in void spaces should be sampled for asbestos content prior to disturbance.
- 4 This building was constructed in Circa 1973 - all previous sampling of insulating cement materials on pipe fittings were found to be non-asbestos. It is assumed for the purpose of this assessment that all pipe insulation in this building and adjoining tunnel are non-asbestos.

<b>FRIABILITY</b>	<b>CONDITION</b>	<b>VIS (VISIBILITY)</b>
HIGH (easily crumbled by hand)	GOOD (no visible signs of disturbance)	Applications are exposed unless otherwise noted
MED (not easily crumbled by hand)	FAIR (visible signs of disturbance, no debris noted on ground)	SUC Suspected Under Covering Carpeting
LOW (tool or implement required to disturb)	POOR (delamination/deterioration evident/imminent, may have debris on ground)	SUV Suspected Under Covering Vinyl Sheeting
		SUL Suspected Under Covering Laminate Flooring
<b>ACCESSIBILITY</b>		SAF Suspected Above Fixed Ceiling
LOW (material concealed or enclosed)		AF Application Above Fixed Ceiling
MED (material exposed but out of hand reach)		2-L Suspected 2-Layers of Asbestos Flooring
HIGH (material exposed and within hand reach)		S Suspect Application - No Access to Room
		W W Application within Wall Cavity or Valance
<b>REMOVAL PRIORITY</b>		WB Application within Boxed Column
<b>IMM</b> Immediate removal recommended. There is a distinct possibility of asbestos fibre release		L Low Application Height <8'
1 Remove within one year due to this applications location and the surrounding areas use, damage is probable.		
2 Removal, in conjunction with proposed building renovations or maintenance, is recommended		
3 Removal, prior to renovation or demolition activities, is recommended		

ASBESTOS CONTAINING MATERIAL LOCATIONS  
AND PRIORITIZED ABATEMENT COST ESTIMATES

FUNCTIONAL AREA (and description)	ID CODE DESCRIPTION AND APPLICATION	VIS	CONDITION	ACCESSIBILITY	FRIABILITY	QUANTITY	UNIT	ABATEMENT RATE	COST	REAPPLICATION RATE	COST	COST PER APPLICATION	REMOVAL FOOT PRIORITY	FOOT NOTES
--------------------------------------	--	-----	-----------	---------------	------------	----------	------	-------------------	------	-----------------------	------	-------------------------	--------------------------	---------------

**PGRH SITE - PRINCE GEORGE REGIONAL BUILDING**

SURVEYED MATERIALS DESCRIPTIONS AND SAMPLE NUMBERS														
ID CODE AND VISUAL DESCRIPTION								SAMPLE No.		ASBESTOS CONTENT				
A1	MK 6 Fireproofing Insulation - Basement Crawlspace							1992 Hansen Sample # 44						15% Chrysotile Asbestos
A1	MK 6 Fireproofing Insulation Debris - Prep/Sterile Stores 0028							743-11						10-20% Chrysotile Asbestos
A2	Re-Application AAD Type 5 Cemetitious Fireproofing - 0028 Prep/Sterile Stores Ceiling Space							743-10						Non-Asbestos
A3	AAAD Fluffy Re-Application Fireproofing - Bulk Stores 0017							743-09						Non-Asbestos
A4	Fireproofing Debris Within Wall Cavity - Elevator Machine Room 0017A (off bulk stores)							743-21						40-50% Amosite Asbestos
A5	Fluffy, Fibrous Fireproofing Insulation Debris - 0199 Health Record Ceiling (old duct hanger)							743-17						40-50% Amosite Asbestos
A5	Fluffy, Fibrous Fireproofing Insulation Debris -0152 Mechanical Room 29 (floor behind electrical equipment)							Not Sampled						Known Asbestos Application
A6	Ceiling Texture - 0220 Mechanical Room 1							1990 PHH Sample # 76						5% Chrysotile Asbestos
B1	Pre-Formed Mag-Block Pipe Insulation - Basement North Stairwell ST07							1992 Hansen Sample # 10						30% Amosite & 10% Chrysotile Asbestos
C1	Soft Grey Fibrous Insulating Cement on Hot Water and Rain Water Leader Pipe Fittings - 5th Floor Redundant Chillier Room (Roof)							1991 PHH Sample # 12 & 13						15% Chrysotile Asbestos
C2	Soft Chalky Non-Fibrous Insulating Cement on Hot Water Pipe Fittings - Mechanical Room 12							Numerous PHH & Hansen Samples						Non-Asbestos
C3	Insulating Cement on Domestic Cold Water Lines - 0220 Mechanical Room 1							743-19						10-20% Chrysotile Asbestos
C4	Insulating Cement on Heat Water Heating Lines - 0220 Mechanical Room 1							743-20						Non-Asbestos
D1	Domestic Hot Water Tank Insulation - Mechanical Room 12							1990 PHH Sample # 92						85% Chrysotile Asbestos
G1	2x4' Pinholed Vinyl Faced Compressed Cellulose Ceiling Tile - Bulk Stores 0017							Not Sampled						Known Non-Asbestos Application
G2	2x4' Short Omni-Directional Fissures with Large and Small Pin Holed Ceiling Tile - Corridor 0034							Not Sampled						Known Non-Asbestos Application
G3	2x4' Large and Small Holed Ceiling Tile - Sorting Area 1107							1990 PHH Sample # 71						Non-Asbestos
H1	12x12" Beige with Thin Short Brown Streaked Vinyl Floor Tile - Basement South Stairwell ST01							743-05						1-10% Chrysotile Asbestos
H2	12x12" Blue with Minimal White Streaked Vinyl Floor Tile - Bulk Stores 0017							1993 Hansen Sample # 39						10% Chrysotile Asbestos
H3	12x12" Beige with Long Brown and White Streaked Vinyl Floor Tile - Bulk Stores 0017							743-08						1-10% Chrysotile Asbestos
H4	12x12" Beige with Cream and Brown Small Spotted Vinyl Floor Tile - Corridor 0052							743-12						Non-Asbestos
H5	9x9" Beige with Long Rust Streaked Vinyl Floor Tile - 0221 Mechanical Room 1							1992 Hansen Sample # 5						18% Chrysotile Asbestos
I1	Grey with Brown and Cream Spotted Jute Backed Marmoleum Sheet Flooring - Processed Stores 0018							Not Sampled						Known Non-Asbestos Application
I2	Pink with Grey and White Spotted Tarkett Vinyl Floor Sheeting - Office 0022							Not Sampled						Known Non-Asbestos Application
I3	Beige, Brown and Cream Square Mosaic Pattern Paper Backed Corlon Vinyl Floor Sheeting - Instruments 0025							1993 Hansen Sample # 32						65% Chrysotile Asbestos
I4	Light Brown, Beige and Cream Random Size Square Mosaic Pattern Paper Backed Corlon Vinyl Floor Sheeting - Corridor 0090							1993 Hansen Sample # 6						60% Chrysotile Asbestos
I5	3 Tone Orange Random Size Square Patterned Paper Backed Corlon Vinyl Floor Sheeting - Washroom 0109							1993 Hansen Sample # 28						65% Chrysotile Asbestos
I6	3 tone Brown Random Size Square Patterned Paper Backed Corlon Vinyl Floor Sheeting - Vestibule 0203							1993 Hansen Sample # 2						60% Chrysotile Asbestos
I7	Dark Brown, Light Brown and Cream Square Mosaic Patterned Paper Backed Corlon Vinyl Floor Sheeting - Plant Services Reception 0083							1993 Hansen Sample # 7						65% Chrysotile Asbestos
I8	Beige with Beige and Brown Long Streaked Foam Core Resilient Sheet Flooring - Shower Room 2121							743-24						Non-Asbestos
J1	Cement Asbestos Rain Water Leader Piping - Loading Dock 0005							Not Sampled						Known Asbestos Application
K1	Flexible Duct Vibration Dampener Joint - Mechanical Room 18 Patient Exhaust Fan							Not Sampled						Known Asbestos Application
K2	Sanitary Sewer Union Packing - East Wing							Not Sampled						Known Asbestos Application
M1	Red Duct Mastic - 0274 Dietician Office							743-18						Non-Asbestos
M2	Red Duct Mastic - 4th Floor West Wing Renovation Area							2006 Napp Sample						1-10% Chrysotile Asbestos

ASBESTOS CONTAINING MATERIAL LOCATIONS  
AND PRIORITIZED ABATEMENT COST ESTIMATES

FUNCTIONAL AREA and description)	ID CODE DESCRIPTION AND APPLICATION	VIS	CONDITION	ACCESSIBILITY	FRIABILITY	QUANTITY	UNIT	ABATEMENT		REAPPLICATION		COST PER APPLICATION	REMOVAL FOOT PRIORITY	FOOT NOTES
								RATE	COST	RATE	COST			

**PGRH SITE - PRINCE GEORGE REGIONAL BUILDING**

SURVEYED MATERIALS DESCRIPTIONS AND SAMPLE NUMBERS Con't													
<i>ID CODE AND VISUAL DESCRIPTION</i>								<i>SAMPLE No.</i>		<i>ASBESTOS CONTENT</i>			
M3	Silver Duct Mastic - 4th Floor West Wing Renovation Area							2006 Napp Sample		1-10% Chrysotile Asbestos			
P1	Drywall Filler - Garbage Room 0001							743-06		Non-Asbestos			
P1	Drywall Filler - Bulk Stores 0017							743-07		Non-Asbestos			
P1	Drywall Filler - Mechanical Room 12 (1973 Renovation Area)							743-13		1-10% Chrysotile Asbestos			
P1	Drywall Filler - Mechanical Room 26							743-15		Non-Asbestos			
P2	Drywall Filler - Mechanical Store Room 0108							743-16		Non-Asbestos			
P3	Drywall Filler - Inter Link Shaft 1040A							743-22		Non-Asbestos			
P3	Drywall Filler - OR Nurses Corridor 1021							743-23		Non-Asbestos			
V1	Fire Door Insulation - Housekeeping Door 0080							743-14		Non-Asbestos			

## Asbestos Bulk Sample Screen Results

Project Number: 7085

Client Name: Peak Earth and Environmental Consulting

NO.	DATE	SAMPLE INFORMATION				MATERIAL TYPE	ASBESTOS PRESENT*
42	16-Mar-2007	Job# 743-01	Northern Health	Power House	Washroom	P1- Drywall Filler	Yes Chrysotile (1-10%)
43	16-Mar-2007	Job# 743-02	Northern Health	Jubilee	Mechanical Room 28	D1- DHWT Insulation	Yes Chrysotile (70-80%)
44	16-Mar-2007	Job# 743-03	Northern Health	Jubilee	Mechanical Room 28	P1- Drywall Filler	No
45	16-Mar-2007	Job# 743-04	Northern Health	Jubilee	Mechanical Room 28	M1- Duct Mastic	No
46	16-Mar-2007	Job# 743-05	Northern Health	Prince George Regional Hosp.	Basement Stair Landing St 01	H1- Vinyl Cement Tile	Yes Chrysotile (1-10%)
47	16-Mar-2007	Job# 743-06	Northern Health	Prince George Regional Hosp.	Basement Garbage Room 0001	P1- Drywall Filler	No
48	16-Mar-2007	Job# 743-07	Northern Health	Prince George Regional Hosp.	Basement Bulkstores 0017	P1- Drywall Filler	No
49	16-Mar-2007	Job# 743-08	Northern Health	Prince George Regional Hosp.	Basement Bulkstores 0017	H3- Vinyl Cement Tile	Yes Chrysotile (1-10%)
50	16-Mar-2007	Job# 743-09	Northern Health	Prince George Regional Hosp.	Basement Elev. Mach. Rm 001	A4 - Debris	No
51	16-Mar-2007	Job# 743-10	Northern Health	Prince George Regional Hosp.	Basement Sterial Store 0028	A5 - Fireproofing	No
52	16-Mar-2007	Job# 743-11	Northern Health	Prince George Regional Hosp.	Basement Sterial Store 0028	A2 - Fireproofing	Yes Chrysotile (10-20%)
53	16-Mar-2007	Job# 743-12	Northern Health	Prince George Regional Hosp.	Basement Corridor 0032	H4 - Vinyl Cement Tile	No
54	16-Mar-2007	Job# 743-13	Northern Health	Prince George Regional Hosp.	Mechanical Room	P1 - Drywall Filler	Yes Chrysotile (1-10%)
55	16-Mar-2007	Job# 743-14	Northern Health	Prince George Regional Hosp.	Housekeeping 080	V1 - Door Insulation	No
56	16-Mar-2007	Job# 743-15	Northern Health	Prince George Regional Hosp.	Mechanical Room 26	P1 - Drywall Filler	No
57	16-Mar-2007	Job# 743-16	Northern Health	Prince George Regional Hosp.	Mechanical Store Room 108	P2 - Drywall Filler	No
58	16-Mar-2007	Job# 743-17	Northern Health	Prince George Regional Hosp.	Mech. Room 29 Area 0152	A5 - Fireproofing	Yes Amosite (50-60%)
59	16-Mar-2007	Job# 743-18	Northern Health	Prince George Regional Hosp.	Dietitian 0274	M1 - Duct Mastic	No
60	16-Mar-2007	Job# 743-19	Northern Health	Prince George Regional Hosp.	Mechanical Room - Room 0220	C2 - Insulating Cement	Yes Chrysotile (10-20%)
61	16-Mar-2007	Job# 743-20	Northern Health	Prince George Regional Hosp.	Mechanical Room 1 Room0220	C3 - Insulating Cement	No

\* No = None Detected or <1% Asbestos present in the sample.

## Asbestos Bulk Sample Screen Results

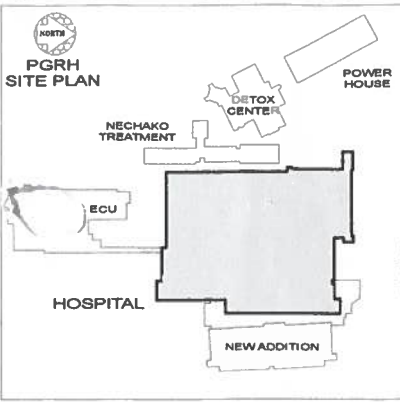
**Project Number: 7085**

**Client Name: Peak Earth and Environmental Consulting**

NO.	DATE	SAMPLE INFORMATION			MATERIAL TYPE	ASBESTOS PRESENT*
62	16-Mar-2007	Job# 743-21	Northern Health	Prince George Regional Hosp. Health Records 0199	A5 - Debris	Yes Amosite (50-60%)
63	16-Mar-2007	Job# 743-22	Northern Health	Prince George Regional Hosp. Shaft 1040A Interior Main Flr	P3 - Drywall Filler	No
64	16-Mar-2007	Job# 743-23	Northern Health	Prince George Regional Hosp. OR Nurses Corridor	P3 - Drywall Filler	No
65	16-Mar-2007	Job# 743-24	Northern Health	Prince George Regional Hosp. 2nd Floor Shower Room 2121	I8 - Foam Core & Glue	No

Total Number of Samples 24

\* No = None Detected or <1% Asbestos present in the sample.



Drawing:  
**PRINCE GEORGE REGIONAL HOSPITAL GROUND FLOOR ASBESTOS INVENTORY**

Title  
**PRINCE GEORGE REGIONAL HOSPITAL SITE**  
 1475 Edmonton Street  
 Prince George, BC

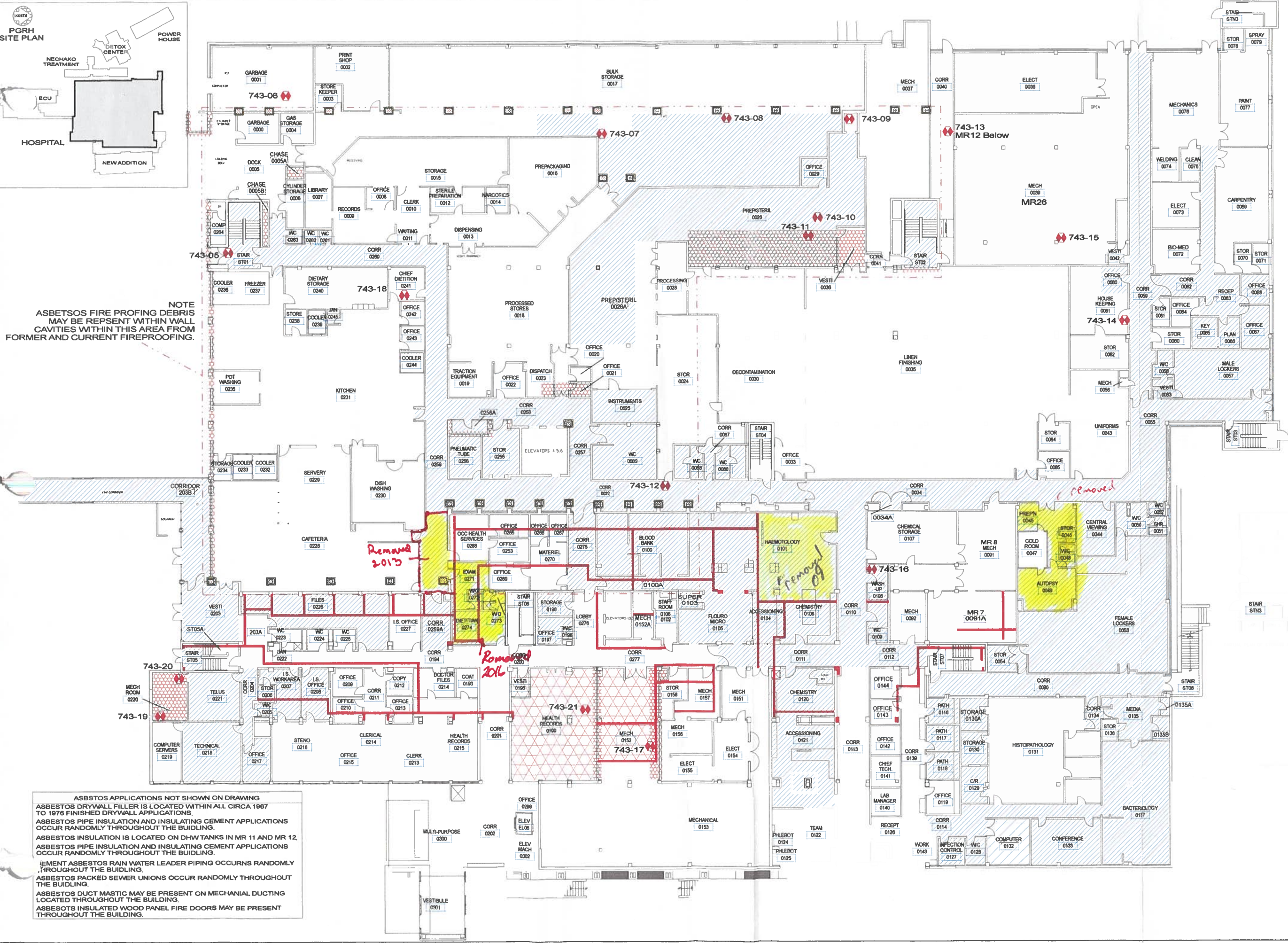


- Legend
- VINYL ASBESTOS FLOORING
  - CONCEALED VINYL ASBESTOS FLOORING
  - ASBESTOS FIRE-PROOFING INSULATION OR DEBRIS AREA
  - RESIDUAL AMOSITE ASBESTOS ON CEILING
  - ASBESTOS FIRE-PROOFING ON BOXED COLUMN
  - ASBESTOS INSULATION (TANK)
  - APPROXIMATE LOCATION OF ASBESTOS PIPE INSULATION
  - BULK SAMPLE LOCATION AND SAMPLE NUMBER

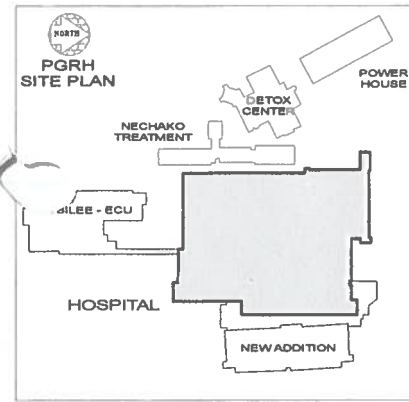
Date: 03.21.07  
 Revision:  
 Scale: 1 : 400  
 Drawn by: S. Ferguson

**DRAWING NUMBER 743 ASB 4.1**

NOTE  
 ASBESTOS FIRE PROOFING DEBRIS  
 MAY BE RESENT WITHIN WALL  
 CAVITIES WITHIN THIS AREA FROM  
 FORMER AND CURRENT FIREPROOFING.



ASBESTOS APPLICATIONS NOT SHOWN ON DRAWING  
 ASBESTOS DRYWALL FILLER IS LOCATED WITHIN ALL CIRCA 1987 TO 1976 FINISHED DRYWALL APPLICATIONS.  
 ASBESTOS PIPE INSULATION AND INSULATING CEMENT APPLICATIONS OCCUR RANDOMLY THROUGHOUT THE BUILDING.  
 ASBESTOS INSULATION IS LOCATED ON DHW TANKS IN MR 11 AND MR 12.  
 ASBESTOS PIPE INSULATION AND INSULATING CEMENT APPLICATIONS OCCUR RANDOMLY THROUGHOUT THE BUILDING.  
 (EMENT ASBESTOS RAIN WATER LEADER PIPING OCCURS RANDOMLY THROUGHOUT THE BUILDING.  
 ASBESTOS PACKED SEWER UNIONS OCCUR RANDOMLY THROUGHOUT THE BUILDING.  
 ASBESTOS DUCT MASTIC MAY BE PRESENT ON MECHANICAL DUCTING LOCATED THROUGHOUT THE BUILDING.  
 ASBESTOS INSULATED WOOD PANEL FIRE DOORS MAY BE PRESENT THROUGHOUT THE BUILDING.



Drawing:  
**PRINCE GEORGE REGIONAL HOSPITAL MAIN FLOOR**  
 ASBESTOS INVENTORY

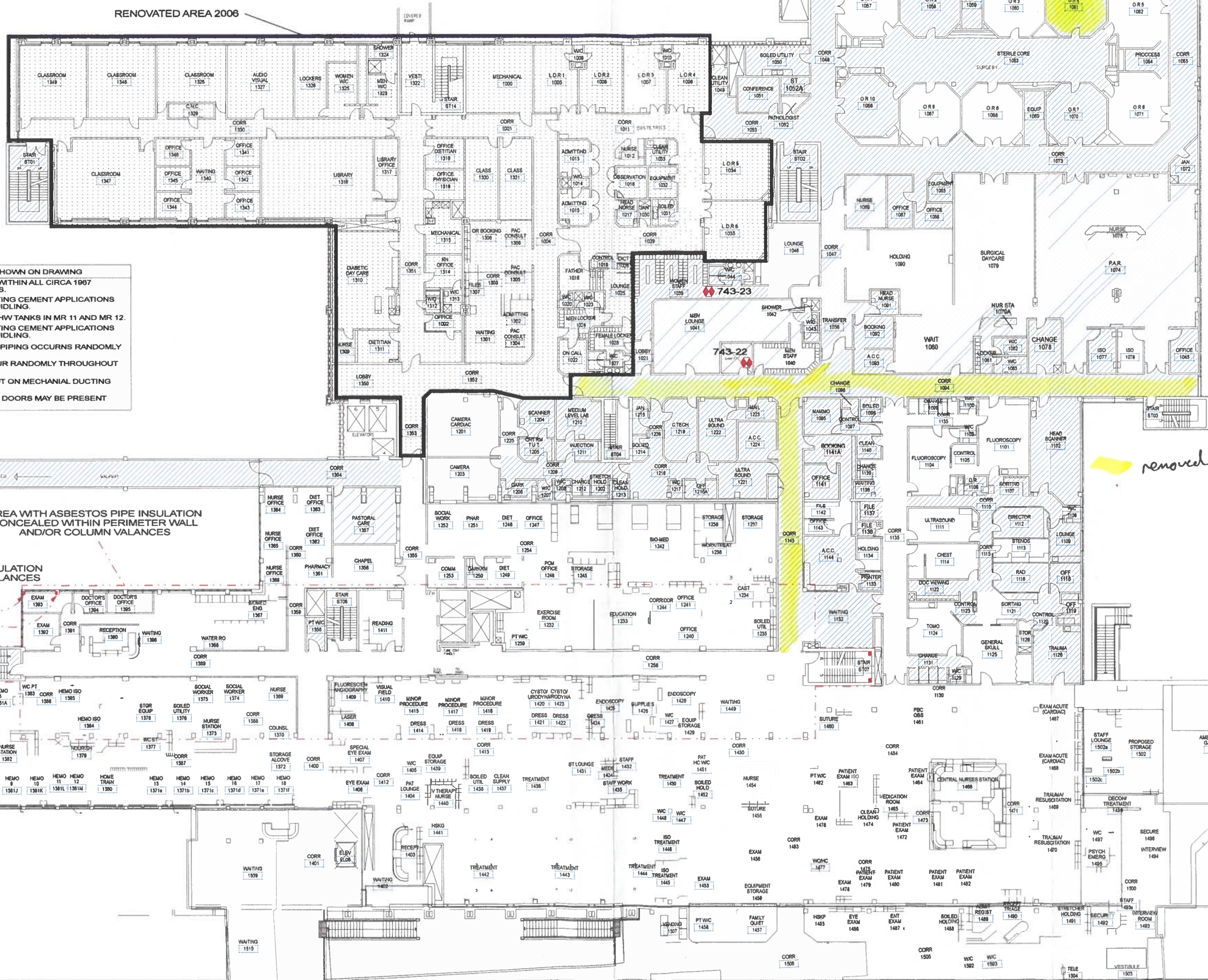
Title:  
**PRINCE GEORGE REGIONAL HOSPITAL SITE**  
 1475 Edmonton Street  
 Prince George, BC



- Legend:
- VINYL ASBESTOS FLOORING
  - CONCEALED VINYL ASBESTOS FLOORING
  - ASBESTOS FIRE-PROOFING INSULATION OR DEBRIS AREA
  - RESIDUAL AMOSITE ASBESTOS ON CEILING
  - ASBESTOS FIRE-PROOFING ON BOXED COLUMN
  - ASBESTOS INSULATION (TANK)
  - APPROXIMATE LOCATION OF ASBESTOS PIPE INSULATION
  - BULK SAMPLE LOCATION AND SAMPLE NUMBER

Date: 03.21.07  
 Revision:  
 Scale: 1 : 400  
 Drawn by: S.Ferguson

**DRAWING NUMBER**  
**743 ASB 4.2**



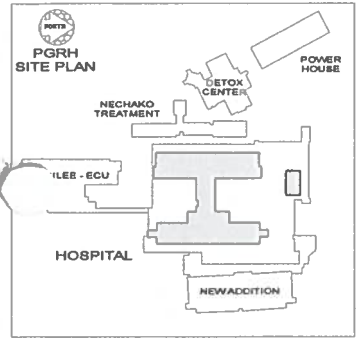
ASBESTOS APPLICATIONS NOT SHOWN ON DRAWING  
 ASBESTOS DRYWALL FILLER IS LOCATED WITHIN ALL CIRCA 1967 TO 1976 FINISHED DRYWALL APPLICATIONS.  
 ASBESTOS PIPE INSULATION AND INSULATING CEMENT APPLICATIONS OCCUR RANDOMLY THROUGHOUT THE BUILDING.  
 ASBESTOS INSULATION IS LOCATED ON DHW TANKS IN MR 11 AND MR 12.  
 ASBESTOS PIPE INSULATION AND INSULATING CEMENT APPLICATIONS OCCUR RANDOMLY THROUGHOUT THE BUILDING.  
 CEMENT ASBESTOS RAIN WATER LEADER PIPING OCCURS RANDOMLY THROUGHOUT THE BUILDING.  
 ASBESTOS PACKED SEWER UNIONS OCCUR RANDOMLY THROUGHOUT THE BUILDING.  
 ASBESTOS DUCT MASTIC MAY BE PRESENT ON MECHANICAL DUCTING LOCATED THROUGHOUT THE BUILDING.  
 ASBESTOS INSULATED WOOD PANEL FIRE DOORS MAY BE PRESENT THROUGHOUT THE BUILDING.

AREA WITH ASBESTOS PIPE INSULATION CONCEALED WITHIN PERIMETER WALL AND/OR COLUMN VALANCES

ASBESTOS PIPE INSULATION WITHIN COLUMN VALANCES TYPICAL

*removed 2013*

*Removed 2017*



- Legend:
- VINYL ASBESTOS FLOORING
  - CONCEALED VINYL ASBESTOS FLOORING
  - ASBESTOS FIRE-PROOFING INSULATION OR DEBRIS AREA
  - RESIDUAL AMOSITE ASBESTOS ON CEILING
  - ASBESTOS FIRE-PROOFING ON BOXED COLUMN
  - ASBESTOS INSULATION (TANK)
  - APPROXIMATE LOCATION OF ASBESTOS PIPE INSULATION
  - BULK SAMPLE LOCATION AND SAMPLE NUMBER

Date: 03.21.07
   
 Revision:
   
 Scale: 1 : 300
   
 Drawn by: S.Ferguson

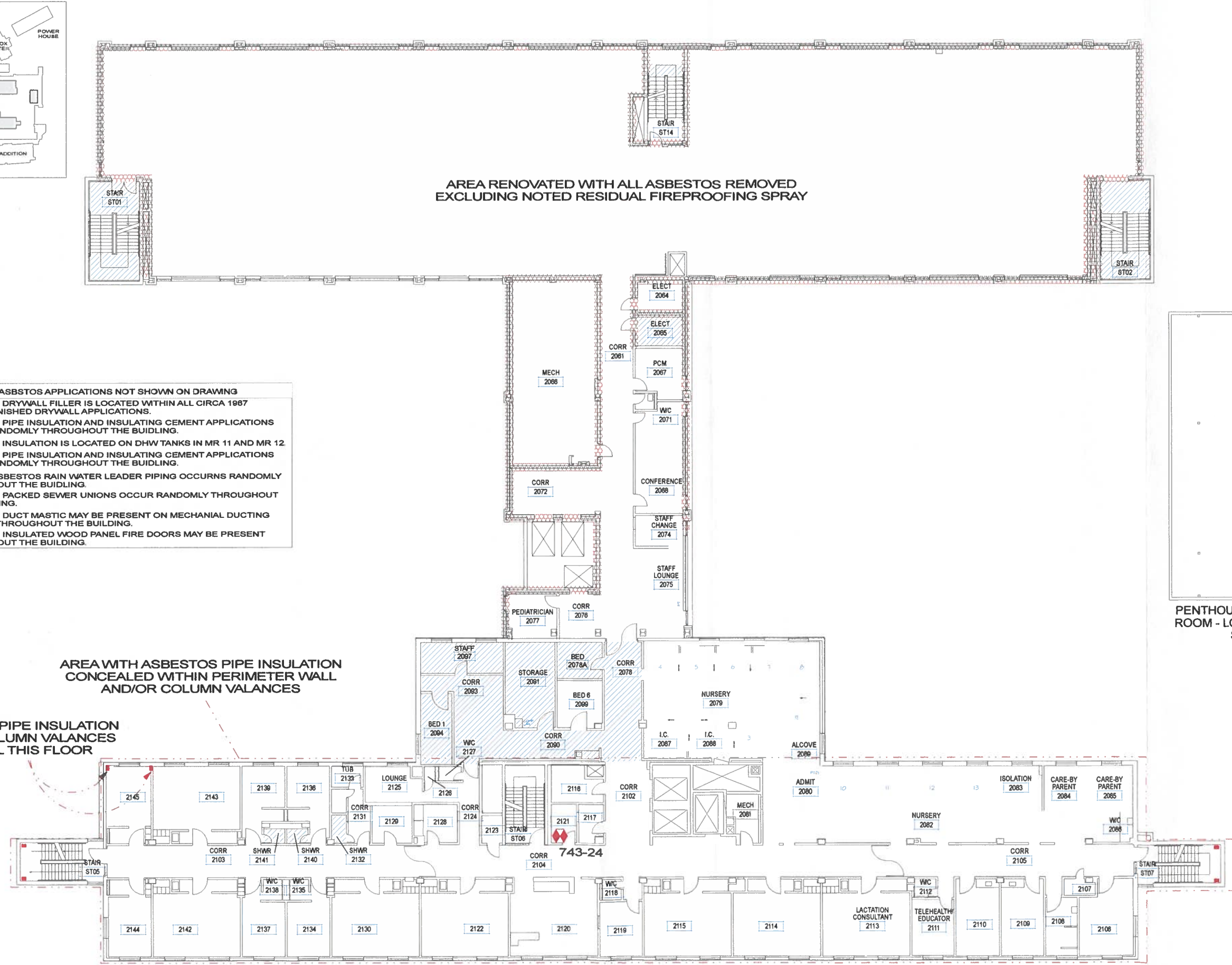
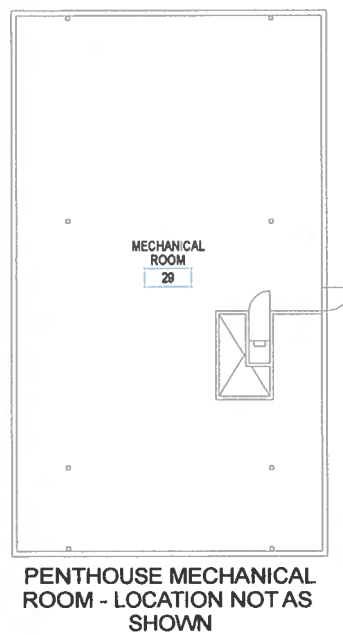
**DRAWING NUMBER**
  
**743 ASB 4.3**

**AREA RENOVATED WITH ALL ASBESTOS REMOVED EXCLUDING NOTED RESIDUAL FIREPROOFING SPRAY**

**ASBESTOS APPLICATIONS NOT SHOWN ON DRAWING**
  
 ASBESTOS DRYWALL FILLER IS LOCATED WITHIN ALL CIRCA 1987 TO 1976 FINISHED DRYWALL APPLICATIONS.
   
 ASBESTOS PIPE INSULATION AND INSULATING CEMENT APPLICATIONS OCCUR RANDOMLY THROUGHOUT THE BUILDING.
   
 ASBESTOS INSULATION IS LOCATED ON DHW TANKS IN MR 11 AND MR 12
   
 ASBESTOS PIPE INSULATION AND INSULATING CEMENT APPLICATIONS OCCUR RANDOMLY THROUGHOUT THE BUILDING.
   
 CEMENT ASBESTOS RAIN WATER LEADER PIPING OCCURS RANDOMLY THROUGHOUT THE BUILDING.
   
 ASBESTOS PACKED SEWER UNIONS OCCUR RANDOMLY THROUGHOUT THE BUILDING.
   
 ASBESTOS DUCT MASTIC MAY BE PRESENT ON MECHANICAL DUCTING LOCATED THROUGHOUT THE BUILDING.
   
 ASBESTOS INSULATED WOOD PANEL FIRE DOORS MAY BE PRESENT THROUGHOUT THE BUILDING.

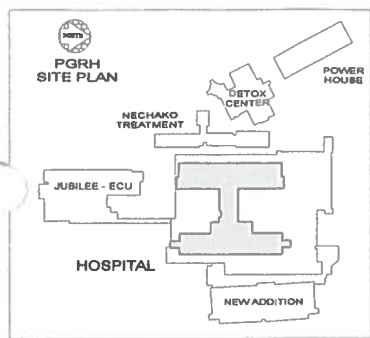
**AREA WITH ASBESTOS PIPE INSULATION CONCEALED WITHIN PERIMETER WALL AND/OR COLUMN VALANCES**

**ASBESTOS PIPE INSULATION WITHIN COLUMN VALANCES TYPICAL THIS FLOOR**



743-24





**PEAK EARTH AND ENVIRONMENTAL CONSULTING INC.**  
 951 Pinewood Place  
 Kelowna, BC V1Z 3G7  
 Ph 250-862-0971  
 Project No.: 743

Drawing:  
**PRINCE GEORGE REGIONAL HOSPITAL THIRD FLOOR ASBESTOS INVENTORY**

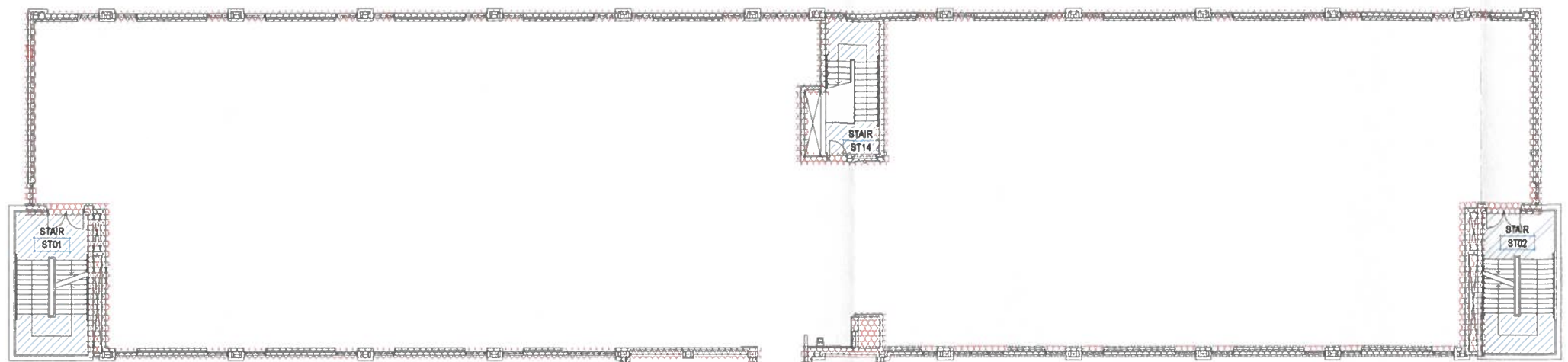
Title:  
**PRINCE GEORGE REGIONAL HOSPITAL SITE**  
 1475 Edmonton Street  
 Prince George, BC



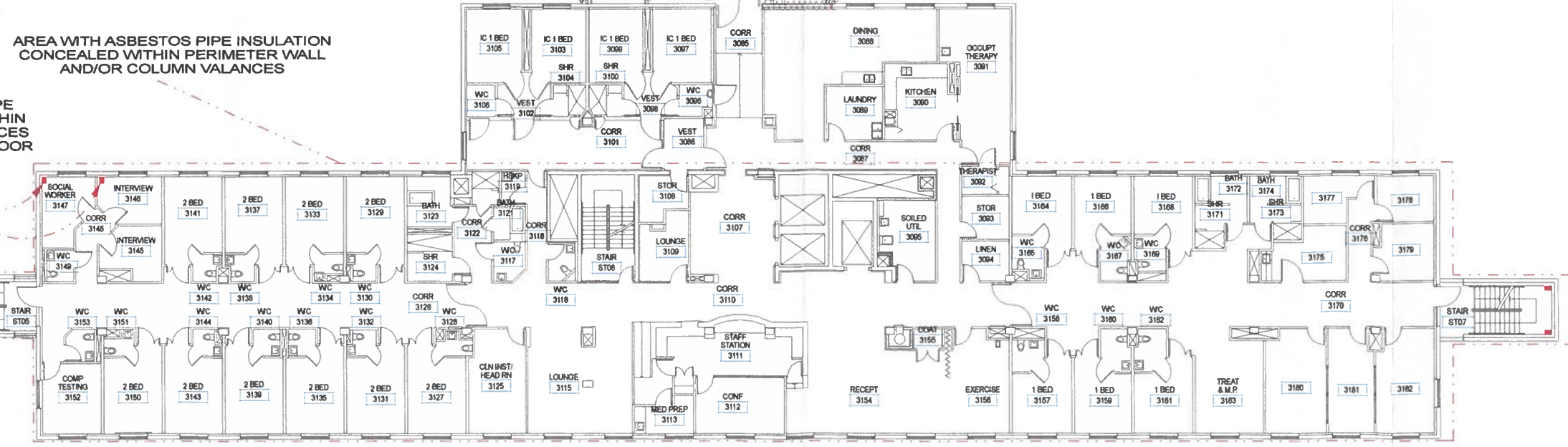
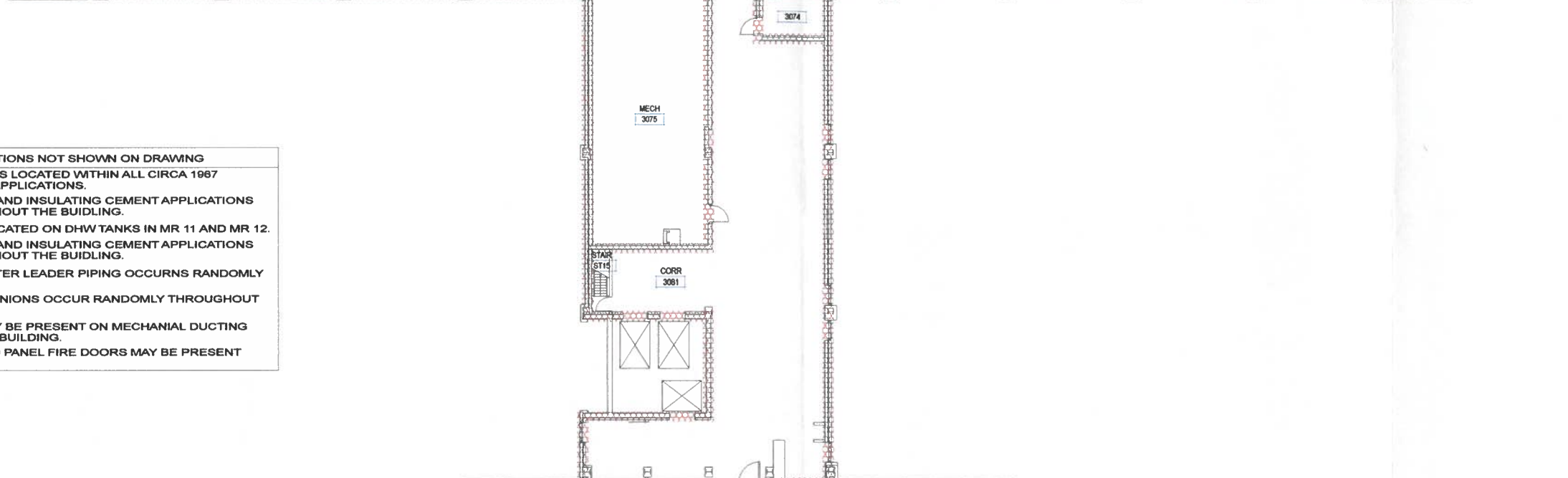
- Legend:
- VINYL ASBESTOS FLOORING
  - CONCEALED VINYL ASBESTOS FLOORING
  - ASBESTOS FIRE-PROOFING INSULATION OR DEBRIS AREA
  - RESIDUAL AMOSITE ASBESTOS ON CEILING
  - ASBESTOS FIRE-PROOFING ON BOXED COLUMN
  - ASBESTOS INSULATION (TANK)
  - APPROXIMATE LOCATION OF ASBESTOS PIPE INSULATION
  - BULK SAMPLE LOCATION AND SAMPLE NUMBER

Date: 03.21.07  
 Revision:  
 Scale: 1 : 300  
 Drawn by: S. Ferguson

**DRAWING NUMBER 743 ASB 4.4**

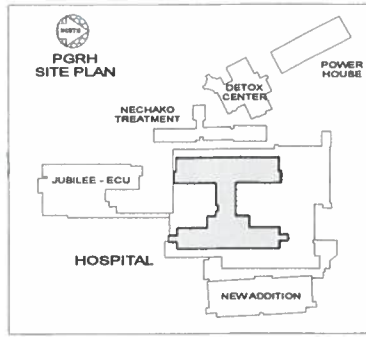


**ASBESTOS APPLICATIONS NOT SHOWN ON DRAWING**  
 ASBESTOS DRYWALL FILLER IS LOCATED WITHIN ALL CIRCA 1967 TO 1976 FINISHED DRYWALL APPLICATIONS.  
 ASBESTOS PIPE INSULATION AND INSULATING CEMENT APPLICATIONS OCCUR RANDOMLY THROUGHOUT THE BUILDING.  
 ASBESTOS INSULATION IS LOCATED ON DHW TANKS IN MR 11 AND MR 12.  
 ASBESTOS PIPE INSULATION AND INSULATING CEMENT APPLICATIONS OCCUR RANDOMLY THROUGHOUT THE BUILDING.  
 CEMENT ASBESTOS RAIN WATER LEADER PIPING OCCURS RANDOMLY THROUGHOUT THE BUILDING.  
 ASBESTOS PACKED SEWER UNIONS OCCUR RANDOMLY THROUGHOUT THE BUILDING.  
 ASBESTOS DUCT MASTIC MAY BE PRESENT ON MECHANICAL DUCTING LOCATED THROUGHOUT THE BUILDING.  
 ASBESTOS INSULATED WOOD PANEL FIRE DOORS MAY BE PRESENT THROUGHOUT THE BUILDING.



AREA WITH ASBESTOS PIPE INSULATION CONCEALED WITHIN PERIMETER WALL AND/OR COLUMN VALANCES

ASBESTOS PIPE INSULATION WITHIN COLUMN VALANCES TYPICAL THIS FLOOR






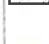




PEAK EARTH AND ENVIRONMENTAL CONSULTING INC.  
 951 Pinewood Place  
 Kelowna, BC V1Z 3G7  
 Ph 250-862-0971  
 Project No.: 743

Drawing:  
**PRINCE GEORGE REGIONAL HOSPITAL FOURTH FLOOR ASBESTOS INVENTORY**

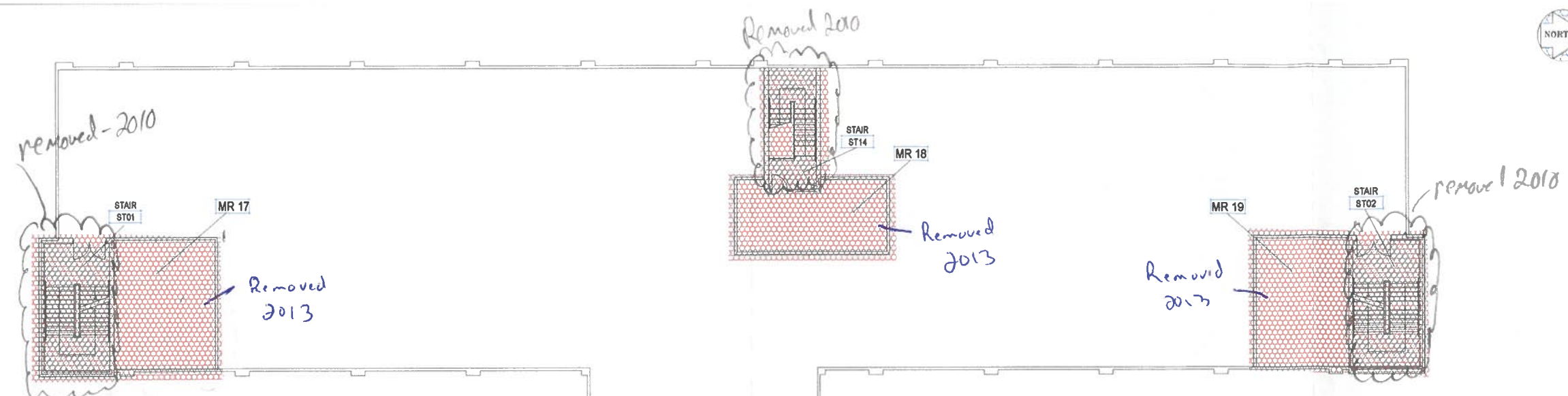
Title:  
**PRINCE GEORGE REGIONAL HOSPITAL SITE**  
 1475 Edmonton Street  
 Prince George, BC

Owner:  
  
**northern health**

- Legend:
-  VINYL ASBESTOS FLOORING
  -  CONCEALED VINYL ASBESTOS FLOORING
  -  ASBESTOS FIRE-PROOFING INSULATION OR DEBRIS AREA
  -  RESIDUAL AMOSITE ASBESTOS ON CEILING
  -  ASBESTOS FIRE-PROOFING ON BOXED COLUMN
  -  ASBESTOS INSULATION (TANK)
  -  APPROXIMATE LOCATION OF ASBESTOS PIPE INSULATION
  -  BULK SAMPLE LOCATION AND SAMPLE NUMBER

Date: 03.21.07  
 Revision:  
 Scale: 1 : 300  
 Drawn by: S.Ferguson

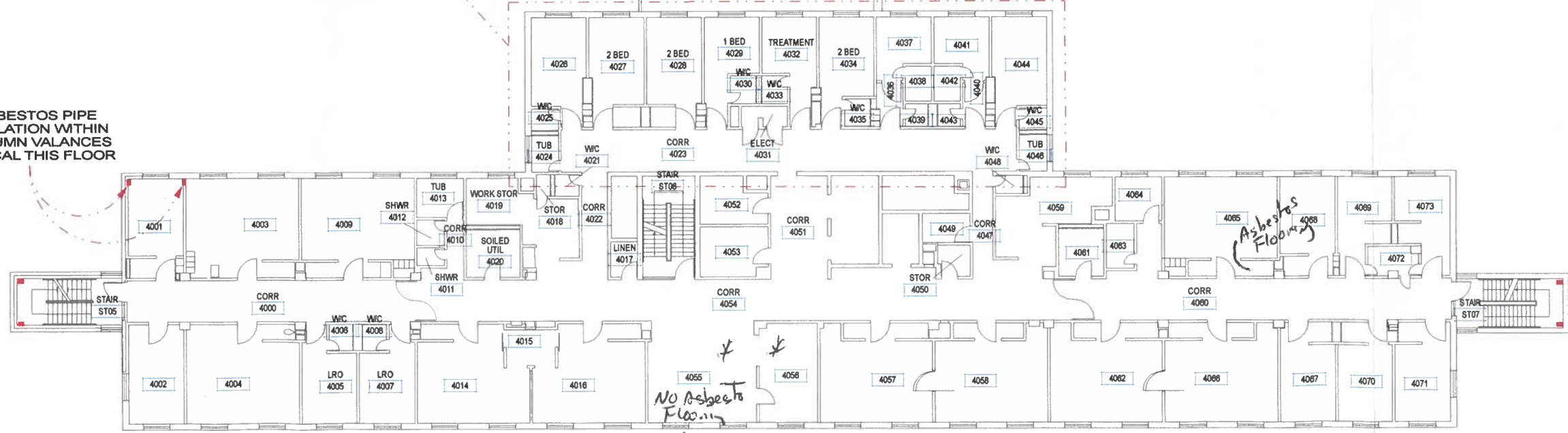
**DRAWING NUMBER 743 ASB 4.5**



**ASBESTOS APPLICATIONS NOT SHOWN ON DRAWING**  
 ASBESTOS DRYWALL FILLER IS LOCATED WITHIN ALL CIRCA 1987 TO 1978 FINISHED DRYWALL APPLICATIONS.  
 ASBESTOS PIPE INSULATION AND INSULATING CEMENT APPLICATIONS OCCUR RANDOMLY THROUGHOUT THE BUILDING.  
 ASBESTOS INSULATION IS LOCATED ON DHW TANKS IN MR 11 AND MR 12.  
 ASBESTOS PIPE INSULATION AND INSULATING CEMENT APPLICATIONS OCCUR RANDOMLY THROUGHOUT THE BUILDING.  
 CEMENT ASBESTOS RAIN WATER LEADER PIPING OCCURS RANDOMLY THROUGHOUT THE BUILDING.  
 ASBESTOS PACKED SEWER UNIONS OCCUR RANDOMLY THROUGHOUT THE BUILDING.  
 ASBESTOS DUCT MASTIC MAY BE PRESENT ON MECHANICAL DUCTING LOCATED THROUGHOUT THE BUILDING.  
 ASBESTOS INSULATED WOOD PANEL FIRE DOORS MAY BE PRESENT THROUGHOUT THE BUILDING.

**NOTE**  
 ASBESTOS FIRE PROOFING DEBRIS MAY BE RESENT WITHIN WALL CAVITIES WITHIN THIS AREA FROM FORMER FIREPROOFING.

ASBESTOS PIPE INSULATION WITHIN COLUMN VALANCES TYPICAL THIS FLOOR



\* see report Dated Aug 23, 2010 Meeting Room



**PEAK EARTH AND ENVIRONMENTAL CONSULTING INC.**  
 951 Pinewood Place  
 Kelowna, BC V1Z 3G7  
 Ph 250-882-0971  
 Project No.: 743

Drawing:  
**PRINCE GEORGE REGIONAL HOSPITAL FIFTH FLOOR ASBESTOS INVENTORY**

Title:  
**PRINCE GEORGE REGIONAL HOSPITAL SITE**  
 1475 Edmonton Street  
 Prince George, BC



- Legend:
- VINYL ASBESTOS FLOORING
  - CONCEALED VINYL ASBESTOS FLOORING
  - ASBESTOS FIRE-PROOFING INSULATION OR DEBRIS AREA
  - RESIDUAL AMOSITE ASBESTOS ON CEILING
  - ASBESTOS FIRE-PROOFING ON BOXED COLUMN
  - ASBESTOS INSULATION (TANK)
  - APPROXIMATE LOCATION OF ASBESTOS PIPE INSULATION
  - BULK SAMPLE LOCATION AND SAMPLE NUMBER

Date: 03.21.07  
 Revision:  
 Scale: 1 : 300  
 Drawn by: S.Ferguson

**DRAWING NUMBER**  
**743 ASB 4.6**

**ASBESTOS APPLICATIONS NOT SHOWN ON DRAWING**  
 ASBESTOS DRYWALL FILLER IS LOCATED WITHIN ALL CIRCA 1987 TO 1978 FINISHED DRYWALL APPLICATIONS.  
 ASBESTOS PIPE INSULATION AND INSULATING CEMENT APPLICATIONS OCCUR RANDOMLY THROUGHOUT THE BUILDING.  
 ASBESTOS INSULATION IS LOCATED ON DHW TANKS IN MR 11 AND MR 12.  
 ASBESTOS PIPE INSULATION AND INSULATING CEMENT APPLICATIONS OCCUR RANDOMLY THROUGHOUT THE BUILDING.  
 CEMENT ASBESTOS RAIN WATER LEADER PIPING OCCURS RANDOMLY THROUGHOUT THE BUILDING.  
 ASBESTOS PACKED SEWER UNIONS OCCUR RANDOMLY THROUGHOUT THE BUILDING.  
 ASBESTOS DUCT MASTIC MAY BE PRESENT ON MECHANICAL DUCTING LOCATED THROUGHOUT THE BUILDING.  
 ASBESTOS INSULATED WOOD PANEL FIRE DOORS MAY BE PRESENT THROUGHOUT THE BUILDING.

REDUNDANT CHILLER ROOM

